

Latitude: 39.15503

Longitude: -123.18399

Driving Directions

Highway Postmile: N/A

From Hwy 101 (in Ukiah), take exit 549 and head east on E Perkins St/Vichy Springs Road for ~0.7mi. Park along SW side of Bridge in the pullout.

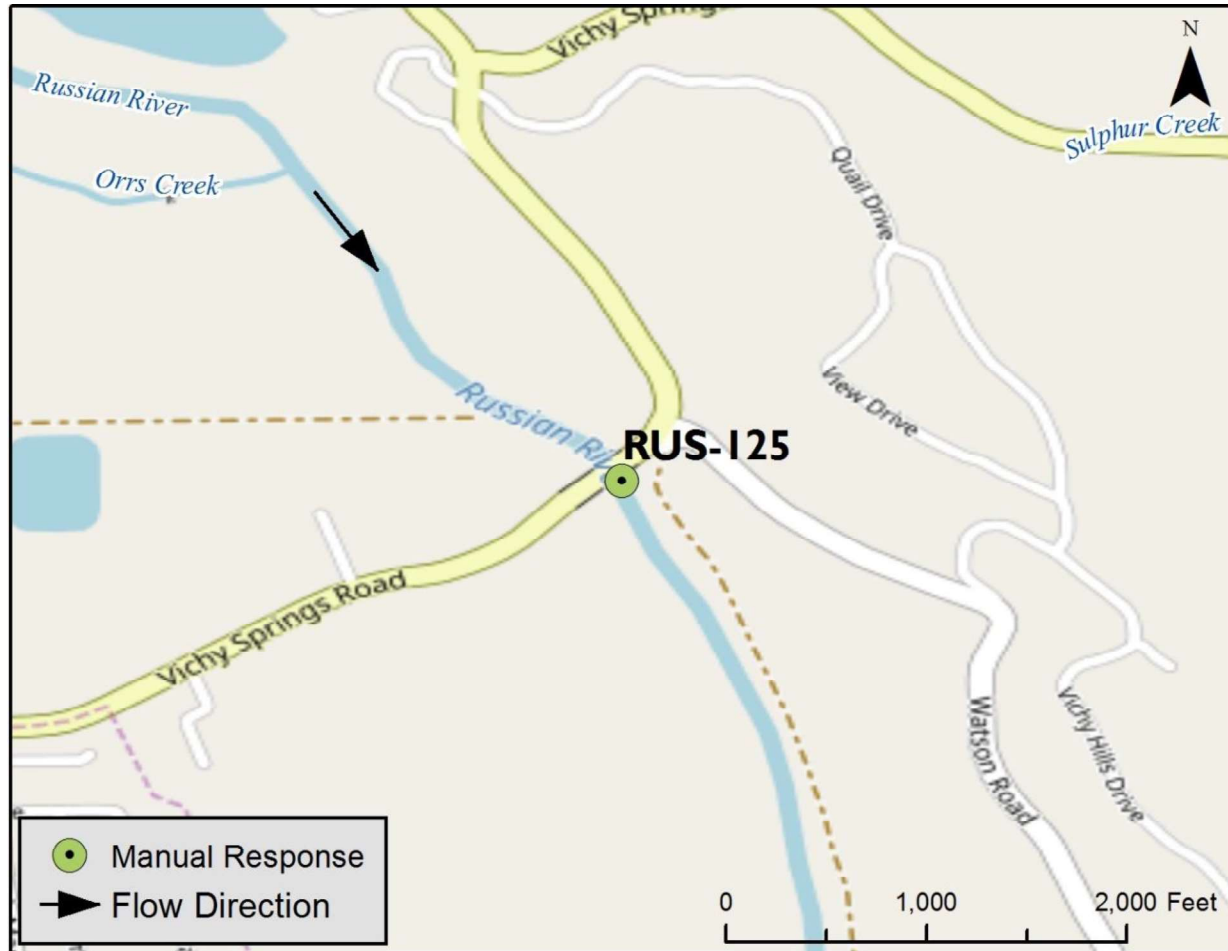
Railroad Milepost: N/A

Nearest Address: N/A

Thomas Guide #: 308/4F

Cell Service: Yes

Overview Street Map



Hazards, Restrictions and Advice for Responders

- Access to shoreline down a narrow pathway
- Parking along a busy road
- Trip and fall hazards, slippery when icy or wet

Resources-At-Risk

Ecological: Red-bellied Newt, Foothill Yellow-legged Frog, Chinook salmon, coho salmon, steelhead trout, Russian River tule perch

Economic:

Tribal: Contact the Native American Heritage Commission at (916) 373-3710.

Cultural and Historic: Contact the Northwest Information Center at (707) 664-0880.

Site Description and Field Notes

River Width: 15 meters
(49 feet)

Gradient: Low

Site Contact/s:

Mendocino Co. Env. Health
(707) 234-6625

Site Location/Segment: RUS-MN-A-155

In summer, there is a 150 yd stretch of shoreline on the west side of the river low stream flow. Riparian vegetation line both banks. Shoreline south of the bridge is heavily vegetated and access is down a steep path. Difficult to get response equipment down there.

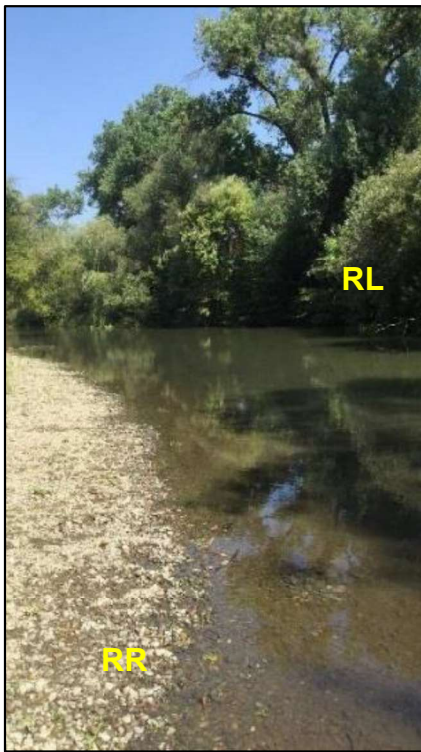
Vehicular Access: N/A, foot access only

Recreational Use: Rafting, Fishing, Beaches

Boat Launches: N/A

ESI Shoreline Type: 5 – mixed sand and gravel beaches and gently sloping banks; 8F – vegetated, steeply sloping bluffs.

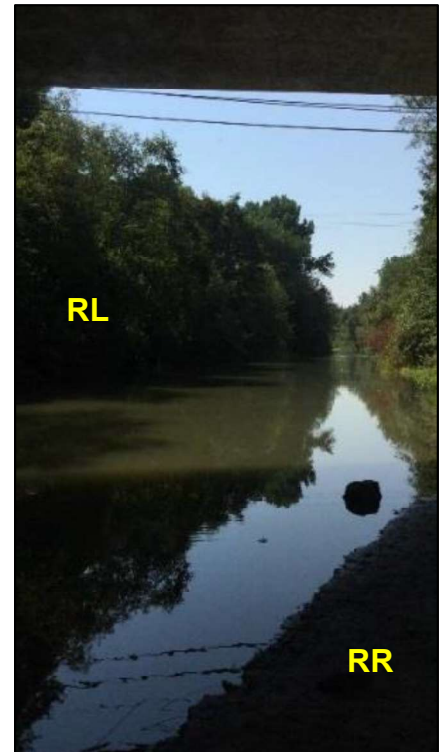
Site Images



Upstream



Straight Across



Downstream

RR = River Right RL = River Left

Photo Date: 08/08/2017

Site Objectives: Deploy sorbent to pick-up any accumulated product.

Implementation: Use crew to deploy/pick-up sorbent materials.

Staging Area Location and Capabilities/Amenities/Waste Management: Work trucks can be staged at the pull-out on the southwest side of the bridge.

Response Strategy Map (overview)



Table of Response Resources

Type	Sub-Type	Size	Unit	QTY - Unit	Special Equipment or Comments
Boom	Sorbent				Use as needed