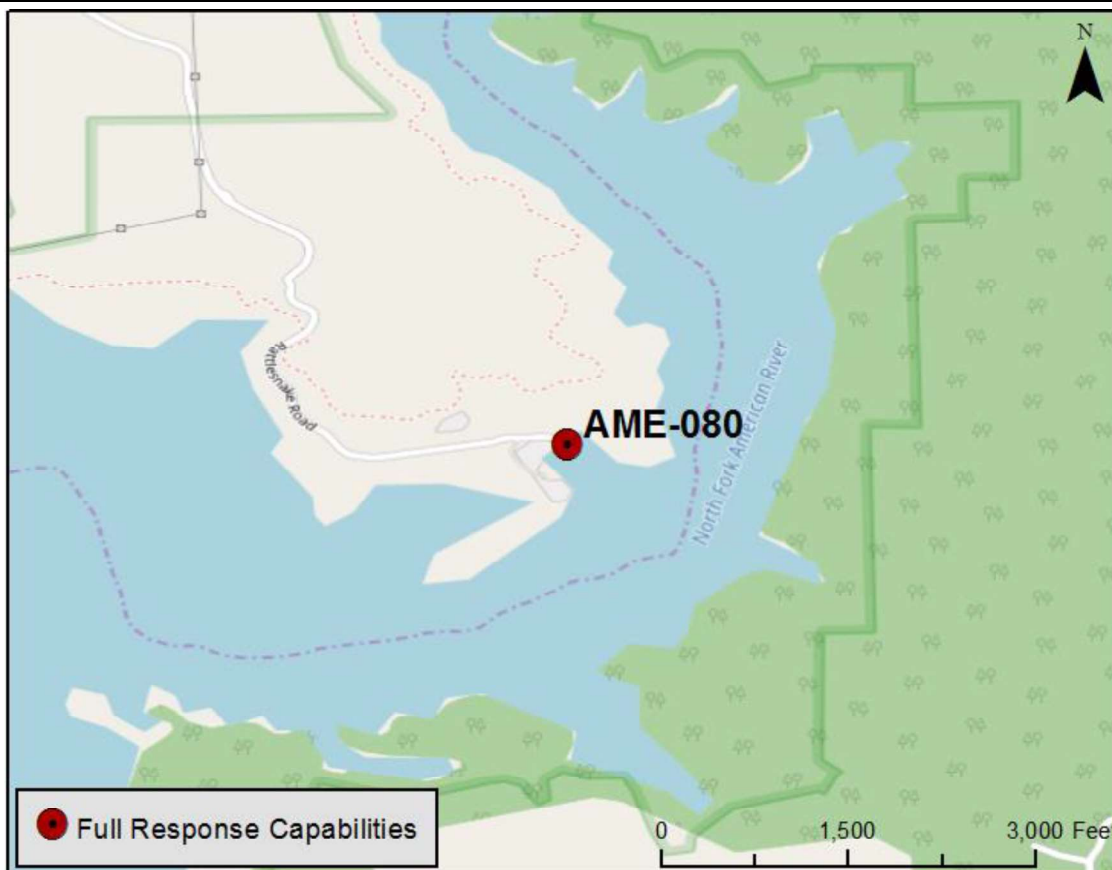


<b>Latitude:</b> 38.818861 <b>Longitude:</b> -121.087738	<b>Driving Directions</b>
<b>Highway Postmile:</b> N/A	<p><b>From the West (Sacramento):</b> On I-80 East take exit 112, Penryn Rd. Turn right on Penryn Rd and proceed for 0.5 miles, then left on King Rd for 2.4 miles, then left on Auburn Folsom Rd for 1.3 miles, then turn right on Newcastle Rd and continue on Rattlesnake Rd for 2.8 miles until you reach the state park entrance.</p> <p><b>From the East (Reno):</b> On I-80 West take exit 115, Newcastle Rd. Turn left on Newcastle Rd and proceed for 3.9 miles, continue onto Rattlesnake Rd for another 1.7 miles until you reach the state park entrance.</p>
<b>Railroad Milepost:</b> N/A	
<b>Nearest Address and Thomas Guide #:</b> 3250 Rattlesnake Rd. Newcastle, CA 95658 <b>Cell Service:</b> Spotty Verizon	

## Overview Street Map



## Hazards, Restrictions and Advice for Responders

- Property is managed by California State Parks
- Open 7 a.m. to 9 p.m. (summer) and 7 a.m. to 7 p.m. (winter). Gate is locked when closed and park staff can respond to open gate.
- Trip and fall hazards, slippery when icy or wet
- Boat Ramp is subject to closure when lake levels are below 425'
- Shallow water
- Rattlesnakes
- Poison oak

## Resources-At-Risk

**Ecological:** American badger, Bald Eagle, Western Pond Turtle, California Red-legged Frog, valley elderberry longhorn beetle, vernal pool fairy shrimp, El Dorado County mule ears, El Dorado bedstraw, Stebbins' morning-glory, Pine Hill ceanothus.

**Economic:** Boating

**Tribal:** Contact the Native American Heritage Commission at (916)-373-3710.

**Cultural and Historic:** Contact the North Central Information Center at (916)-278-5162.



### Site Description and Field Notes

**River Width:** 170 meters  
(558 feet)

**Gradient:** Low

**Site Contact/s:**

Folsom Lake State  
Recreation Area  
(916) 358-1300

**Site Location/Segment:** AME-PL-I-005

This high recreational use area with trails is property managed by State Parks. Open 7 a.m. to 9 p.m. (summer) and 7 a.m. to 7 p.m. (winter). Gate is locked when closed and park staff can respond to open gate.

**Vehicular Access:** All vehicles

**Recreational Use:** Boating, Fishing, Swimming, Hiking

**Boat Launches:** 2 asphalt lanes onsite. Launch ramp closed when lake is at 425' in elevation, hand launch of kayaks and inflatables still possible when ramp is closed.

**ESI Shoreline Type:** Sandy bars and gently sloping banks (4), vegetated low banks (9B)

### Site Images



Boat Ramp  
Photo Date: 05/30/2018



Staging  
Photo Date: 05/30/2018



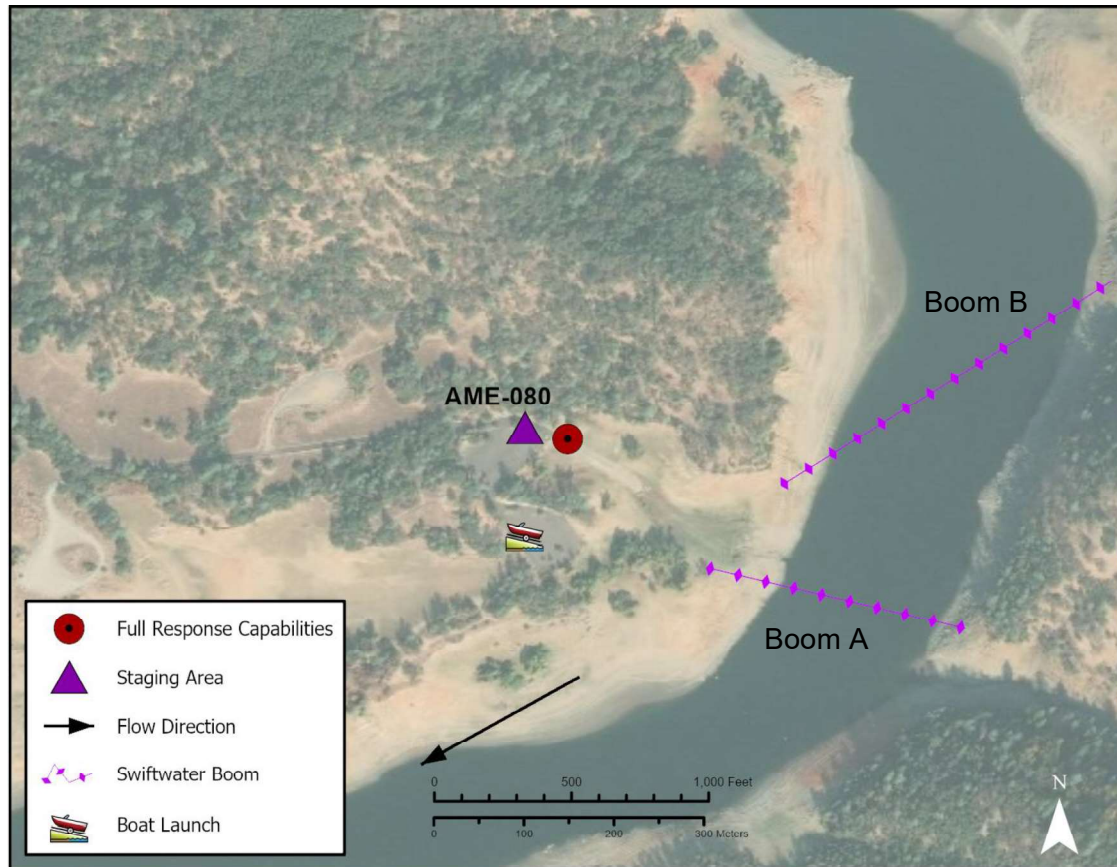
Additional Staging  
Photo Date: 05/30/2018

**Site Objectives:** Collection and protection of public.

**Implementation:** Boom A: 2000 feet of contractor boom downstream of ramp to protect public during a response. Boom B: 1500 feet boom for collection near the boat ramp.

**Staging Area Location and Capabilities/Amenities/Waste Management:** Two large staging areas. Parking lot and large equestrian area (55 x 35 meters).

### Response Strategy Map (overview)



### Table of Response Resources

Type	Sub-Type	Size	Unit	QTY - Unit	Special Equipment or Comments
Boom	Sorbent	5 to 8	inch	3000 feet	5 inches for light oiling, 8 inches for heavier oiling
Boom	Swift Water	8 to 12	inch	1500 feet	Boom A
Boom	Swift Water	8 to 12	inch	2000 feet	Boom B. To provide for public safety.
Anchors	Danforth	40	lb	20	
Skimmer	Disc, Drum or Weir			1	
Vacuum Truck		120	bbl	1	
Storage Tank		20,000	gal	5	
Boat	Shallow Water Barge			3	
Pads and Sweep	Sorbent		bales	40	
Personnel	Boat and Shoreline			8 to 12-person crew	