

Latitude: 38.84626
Longitude: -121.0596

Driving Directions

Highway Postmile: N/A

Railroad Milepost: N/A

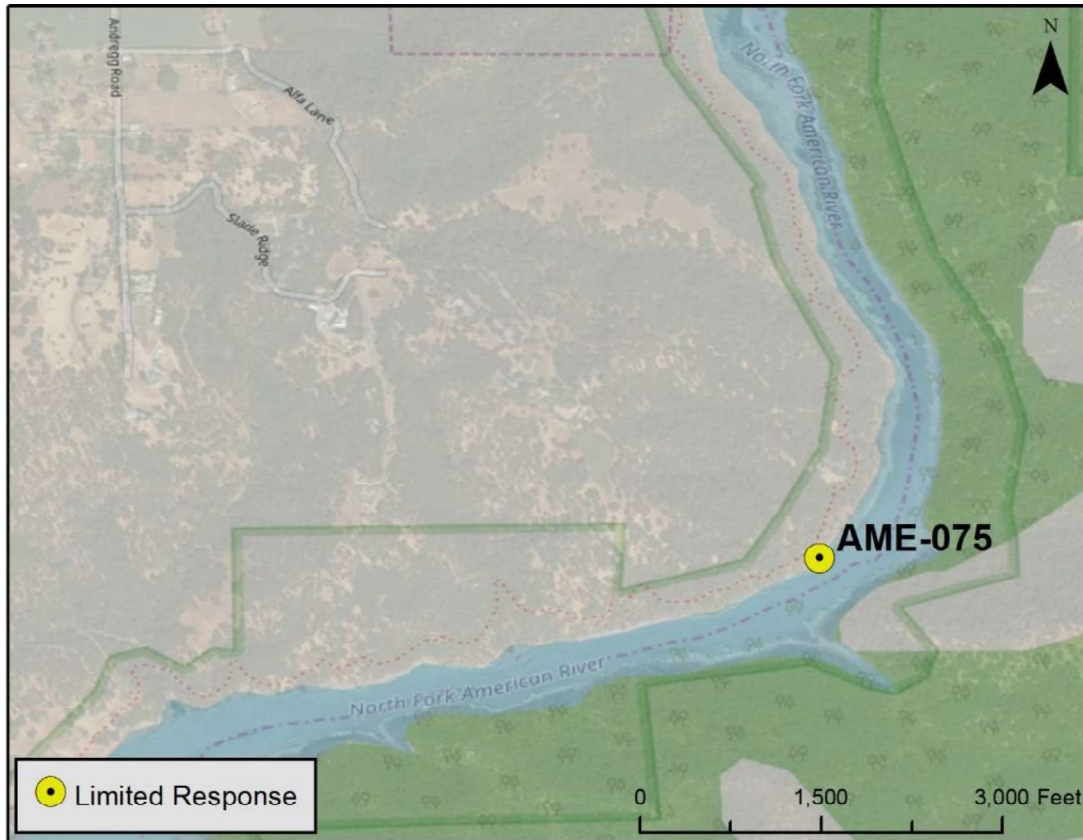
Nearest Address and Thomas Guide #:
 3250 Rattlesnake Rd.
 Newcastle, CA 95658

Cell Service: Spotty

From the West (Sacramento): On I-80 East take exit 112, Penryn Rd. Turn right on Penryn Rd and proceed for 0.5 miles, then left on King Rd for 2.4 miles, then right on Auburn Folsom Rd for 1.3 miles, then turn right on Newcastle Rd and continue on Rattlesnake Rd for 2.8 miles until you reach the state park entrance.

From the East (Reno): On I-80 West take exit 115, Newcastle Rd. Turn left on Newcastle Rd and proceed for 3.9 miles, continue onto Rattlesnake Rd for another 1.7 miles until you reach the state park entrance.

Overview Street Map



Hazards, Restrictions and Advice for Responders

- Property is managed by California State Parks
- Open 7 a.m. to 9 p.m. (summer) and 7 a.m. to 7 p.m. (winter). Gate is locked when closed and park staff can respond to open gate.
- Trip and fall hazards, slippery when icy or wet, PFD required
- Rattlesnake Bar Boat Ramp is subject to closure when lake levels are below 425'. Hand launch of kayaks and inflatables still possible when ramp is closed.
- Booming site accessible by boat only
- Shallow water

Resources-At-Risk

Ecological: American badger, Bald Eagle, Western Pond Turtle, California Red-legged Frog, valley elderberry longhorn beetle, vernal pool fairy shrimp, El Dorado County mule ears, El Dorado bedstraw, Stebbins' morning-glory, Pine Hill ceanothus.

Economic: Boating

Tribal: Contact the Native American Heritage Commission at (916)-373-3710.

Cultural and Historic: Contact the North Central Information Center at (916)-278-5162.

Site Description and Field Notes

River Width: 60 meters
(197 feet)

Gradient: Low

Site Contact/s:

Folsom Lake State
Recreation Area
(916) 358-1300

Site Location/Segment: AME-PL-H-010

Property managed by State Parks. High recreational use area with trails. Open 7 a.m. to 9 p.m. (summer) and 7 a.m. to 7 p.m. (winter). Gate is locked when closed and park staff can respond to open gate. Booming site accessible only by boat. See site AME-80, Rattlesnake Bar Boat Ramp.

Vehicular Access: All vehicles access to boat ramp

Recreational Use: Boating, Fishing, Swimming

Boat Launches: 2 asphalt lanes onsite. Launch ramp closed when lake is at 425' in elevation, hand launch of kayaks and inflatables still possible when ramp is closed.

ESI Shoreline Type: Riprap (6B), vegetated low banks (9B)

Site Images



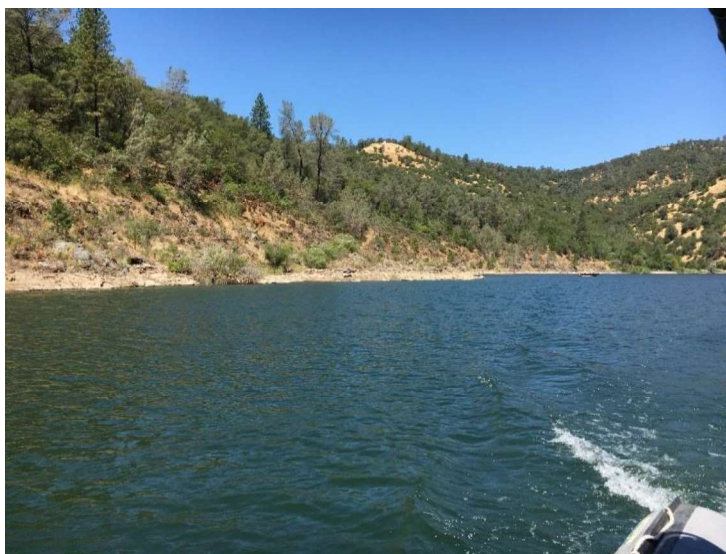
Upstream

Photo Date: 05/08/2018



Downstream

Photo Date: 03/23/2018



Straight Across

Photo Date: 07/26/2017

RR = River Right RL = River Left

Site Objectives: Collection, source control

Implementation: Use 21 in. harbor boom for deflection, swift water boom for collection, and sorbent boom for source control. Booming strategy is dependent on river conditions.

Staging Area Location and Capabilities/Amenities/Waste Management: Located at Rattlesnake Bar Boat Ramp. Two large staging areas. Parking lot and large equestrian area (55 x 35 meters).

Response Strategy Map (overview)



Table of Response Resources

Type	Sub-Type	Size	Unit	QTY - Unit	Special Equipment or Comments
Boom	Sorbent	5 to 8	in	2000 ft	5 inches for light oiling, 8 inches for heavier oiling
Boom	Swift Water	8 to 12	in	1000 ft	
Boom	Harbor	21	in	1000 ft	Use if needed for deflection and to slow product down
Boom Deflector				3	
Shallow Water Barge Set				1	Or on water storage
Boat	Landing Craft	30	ft	1	
Pompoms			box	10	
Pads and Sweep	Sorbent		bales	40	
Personnel	Boat and Shoreline			6 to 12-person crew	