

Latitude: 38.883978
Longitude: -121.061030

Driving Directions

Highway Postmile: N/A

From the West (Sacramento): On I-80 East take exit 115, Newcastle Rd. Continue on Indian Hill Rd for 2.4 miles, turn left on Auburn Folsom Rd proceed for 0.4 miles, turn right on Maidu Dr for 1.0 miles, turn right at China Bar for 0.5 miles, then turn left on Pleasant Ave and proceed for 0.3 miles to the site.

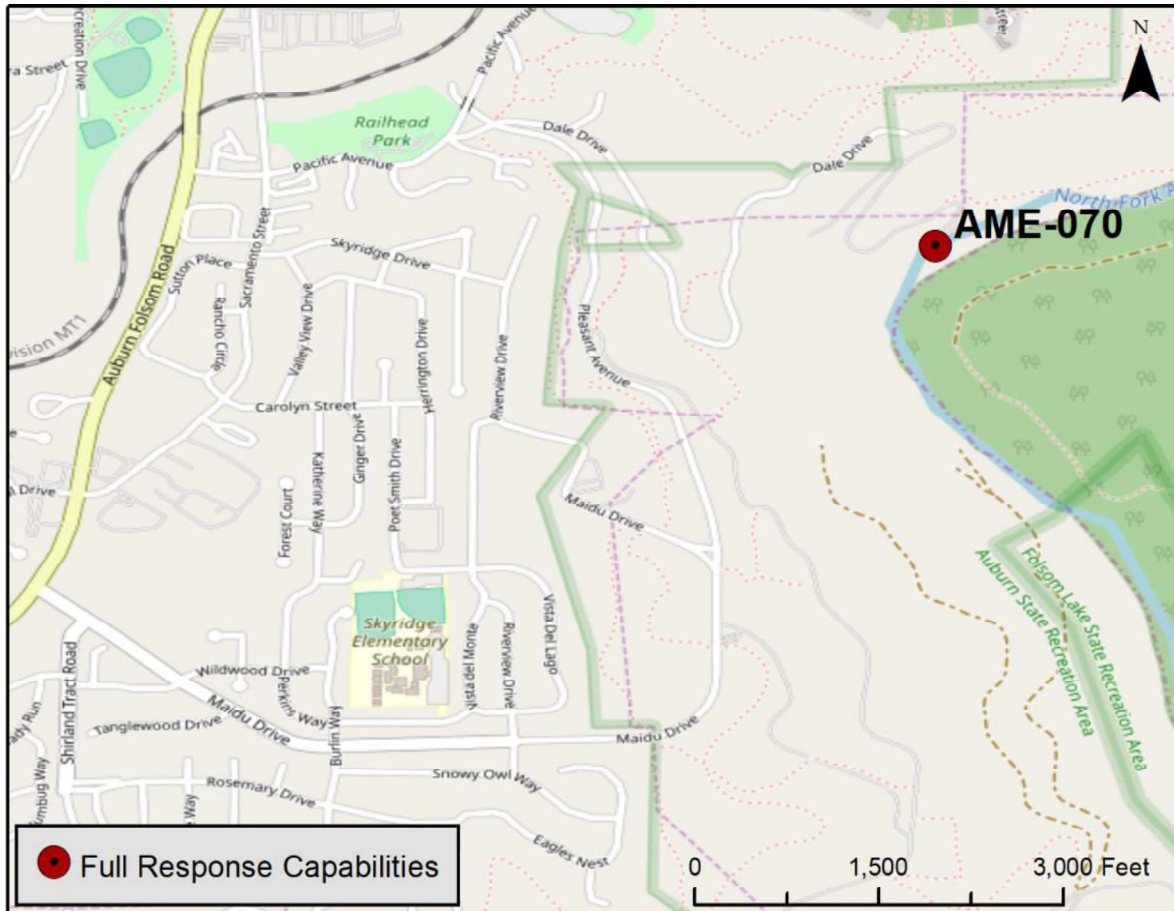
Railroad Milepost: N/A

Nearest Address and Thomas Guide #:
N/A

From the East (Reno): On I-80 West take exit 119B, CA-49 Grass Valley/Placerville. Turn right on Lincoln Way for 0.1 mile, turn left on Auburn Folsom Rd proceed for 1.5 miles, turn right on Maidu Dr for 1.0 miles, turn right at China Bar for 0.5 miles, then turn left on Pleasant Ave and proceed for 0.3 miles to the site.

Cell Service: Spotty, Verizon and AT&T

Overview Street Map



Hazards, Restrictions and Advice for Responders

- Swift water during winter and spring flows
- Trip and fall hazards, slippery when icy or wet
- Locked gate and will need State Parks gate key #142
- Auburn Whitewater Park is located at this site

Resources-At-Risk

Ecological: Townsend's big-eared bat, Foothill Yellow-legged Frog

Economic: Auburn Whitewater Park, Rafting, PCWA Pump Station

Tribal: Contact the Native American Heritage Commission at (916)-373-3710.

Cultural and Historic: Contact the North Central Information Center at (916)-278-5162.



Site Description and Field Notes

River Width: 60 meters
(197 ft)

Gradient: Low

Site Contact/s:

Auburn State Recreation
Area (916) 358-1300

PCWA Power
(530) 367-2291

Site Location/Segment: AME-PL-H-005

Property managed by State Parks, PCWA, and PG&E with locked gate.

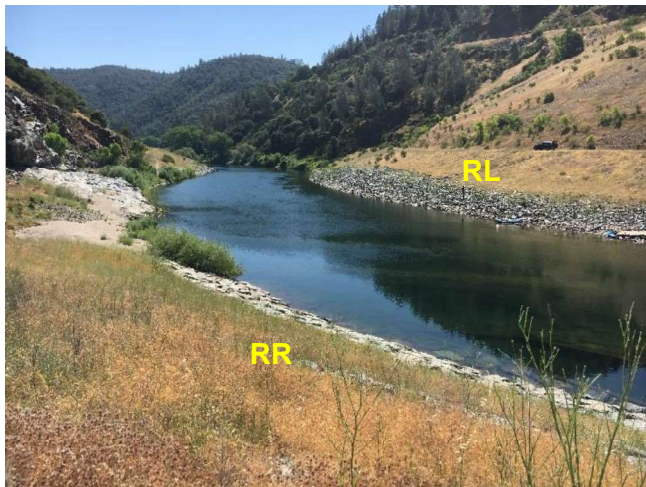
Vehicular Access: 4WD/Pick up, some cars with good ground clearance

Recreational Use: Rafting, hiking

Boat Launches: Launch inflatable or kayak from shoreline

ESI Shoreline Type: Exposed rocky banks (1A), riprap (6B), vegetated, steeply sloping bluffs (8F)

Site Images



Upstream



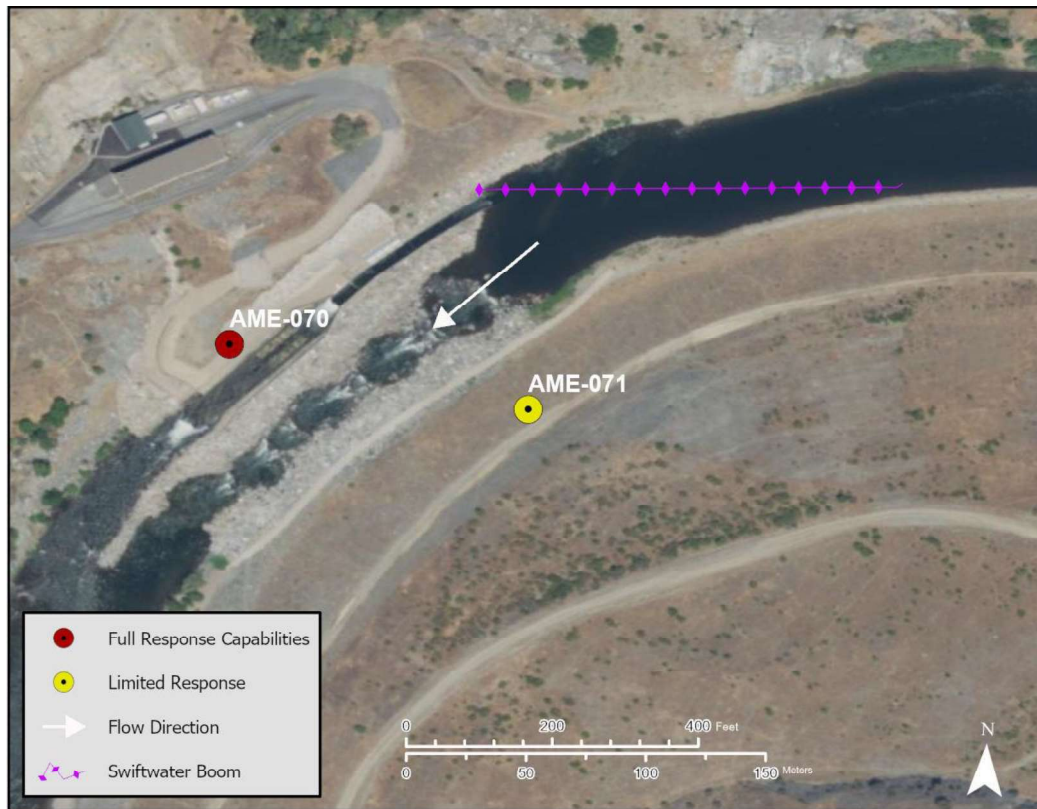
Downstream



Straight Across

RR = River Right RL = River Left

Photo Date: 06/08/2018

Site Objectives: Collection**Implementation:** Deploy boom river-left to river-right into existing canal.**Staging Area Location and Capabilities/Amenities/Waste Management:** Large grassy area for staging and storage above collection site.**Response Strategy Map (overview)****Table of Response Resources**

| Type | Sub-Type | Size | Unit | QTY - Unit | Special Equipment or Comments |
|-----------------|-----------------------------|---------|-------|---------------------|---|
| Boom | Sorbent | 5 to 8 | in | 1200 ft | 5 inches for light oiling, 8 inches for heavier oiling. |
| Boom | Swift Water | 8 to 12 | in | 600 ft | |
| Boom Deflectors | | | | 3 | |
| Anchors | Danforth | 40 | lb | 6 | |
| Gear Pump | | | | 1 | |
| Vacuum Truck | | 70 | bbl | 1 | |
| Skimmer | Disc or Drum | | | 1 | |
| Storage Totes | | 5,000 | gal | 4 | |
| Boat | Inflatable, aluminum, kayak | | | 2 | |
| Pads and Sweep | Sorbent | | bales | 40 | |
| Personnel | Boat and Shoreline | | | 6 to 12-person crew | |