

Latitude: 38.96781
Longitude: -120.9748

Driving Directions

Highway Postmile: N/A

From the West (Sacramento): On I-80 East take exit 121, Auburn Ravine Rd. Turn right on Foresthill Rd and proceed for 5.7 miles, then turn left on Upper Lake Clementine Rd for 1.5 miles to parking area.

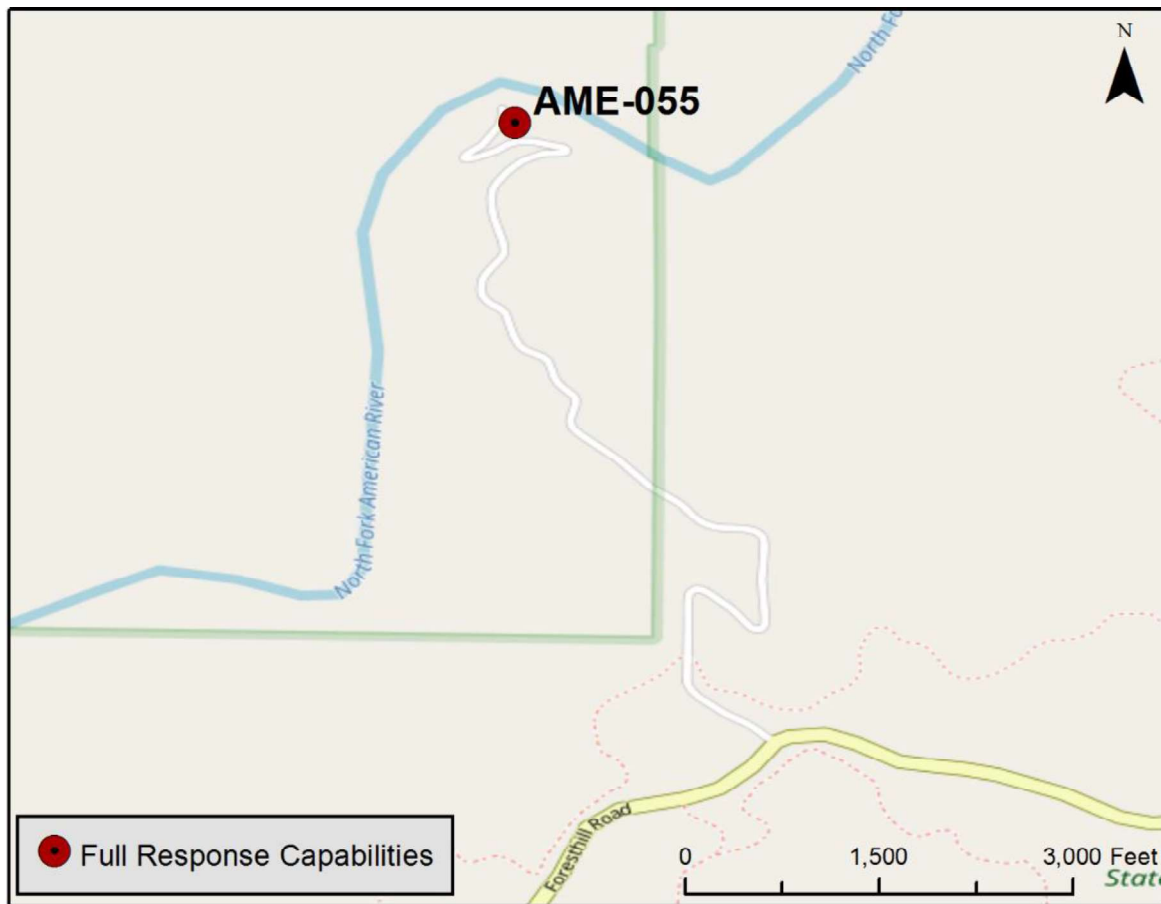
Railroad Milepost: N/A

Nearest Address and Thomas Guide #:
N/A

From the East (Reno): On I-80 West take exit 121, Auburn Ravine Rd. Turn left on Foresthill Rd and proceed for 5.7 miles, then turn left on Upper Lake Clementine Rd for 1.5 miles to parking area.

Cell Service: No

Overview Street Map



Hazards, Restrictions and Advice for Responders

- Swift water during winter and spring flows
- Trip and fall hazards, slippery when icy or wet
- Steep river-right bank
- Closed gate October 15 to April 15. Will need State Parks gate #120 key for entry
- Dirt road will need to be maintained if accessed during closed months
- High recreational use

Resources-At-Risk

Ecological: Townsend's big-eared bat

Economic: Kayaking and Fishing

Tribal: Contact the Native American Heritage Commission at (916)-373-3710.

Cultural and Historic: Contact the North Central Information Center at (916)-278-5162.

Site Description and Field Notes

River Width: 50 meters
(164 feet)

Gradient: Low

Site Contact/s:

Auburn State Recreation
Area (916) 358-1300

Site Location/Segment: AME-PL-G-025

Property managed by State Parks. Large parking areas with high recreational use. Beach width varies depending on water flow. Room for a containment skim pond near gravel bar. Recommend 120bbls truck.

Vehicular Access: 4WD/Pick up, some cars with good ground clearance

Recreational Use: Swimming, Rafting, Fishing, Beaches

Boat Launches: Launch inflatable or kayak from west side of shoreline

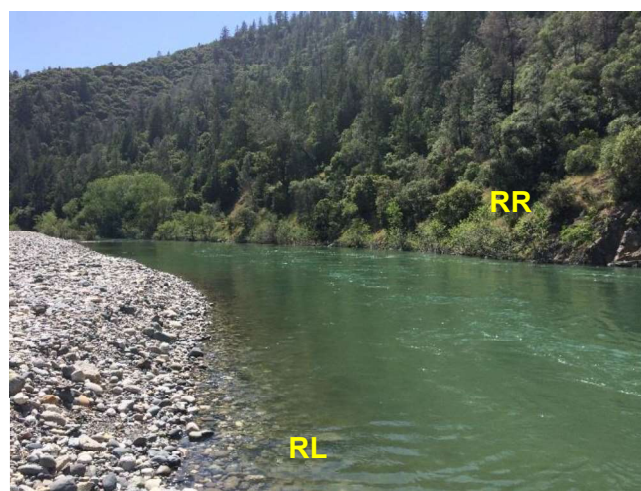
ESI Shoreline Type: Mixed sand and gravel bars and gently sloping banks (5), vegetated, steeply sloping bluffs (8F)

Site Images



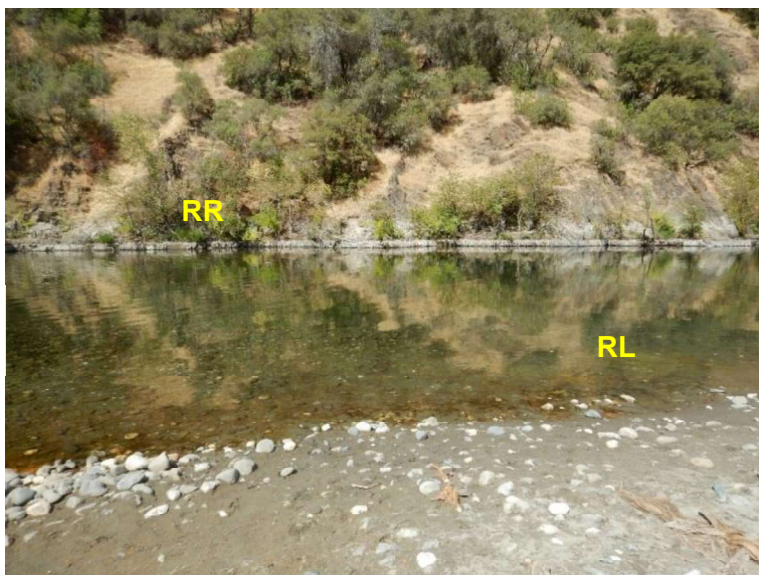
Upstream

Photo Date: 05/09/2017



Downstream

Photo Date: 05/09/2017



Straight Across

Photo Date: 10/03/2017

RR = River Right RL = River Left

Site Objectives: Collection

Implementation: Deploy swift water boom from river-right upstream shoreline to slower water on river-left shoreline. Use sand stakes on river-right. There is room for a skim pond at the gravel bar.

Staging Area Location and Capabilities/Amenities/Waste Management: Large area for staging and storage.

Response Strategy Map (overview)

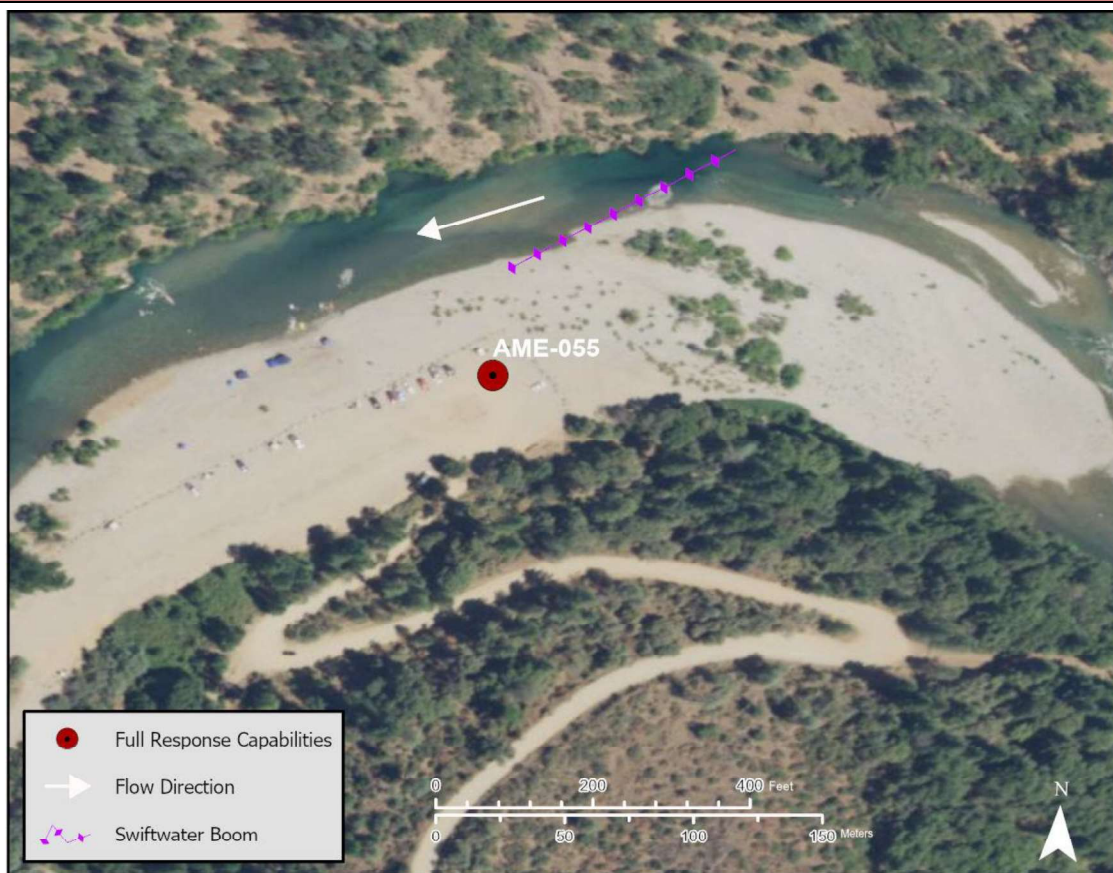


Table of Response Resources

Type	Sub-Type	Size	Unit	QTY - Unit	Special Equipment or Comments
Boom	Sorbent	5 to 8	in	800 ft	5 inches for light oiling, 8 inches for heavier oiling
Boom	Swift Water	8 to 12	in	400 ft	
Boom Deflectors				3	
Sand stakes				6	
Vacuum Truck		120	bbl	1	
Skimmer	Disc, Drum or Weir			1	
Storage Tank		20,000	gal	5	
Boat	Inflatable, aluminum, kayak			2	
Pads and Sweep	Sorbent		bales	40	
Personnel	Boat and Shoreline			6 to 12-person crew	