

Latitude: 39.182495
Longitude: -120.834219

Driving Directions

Highway Postmile: PLA 43.167

From the West (Sacramento): On I-80 East take exit 145, Dutch Flat. Turn right onto Ridge Rd/Canyon Creek Rd and proceed along this road 0.6 miles until it crosses the river site.

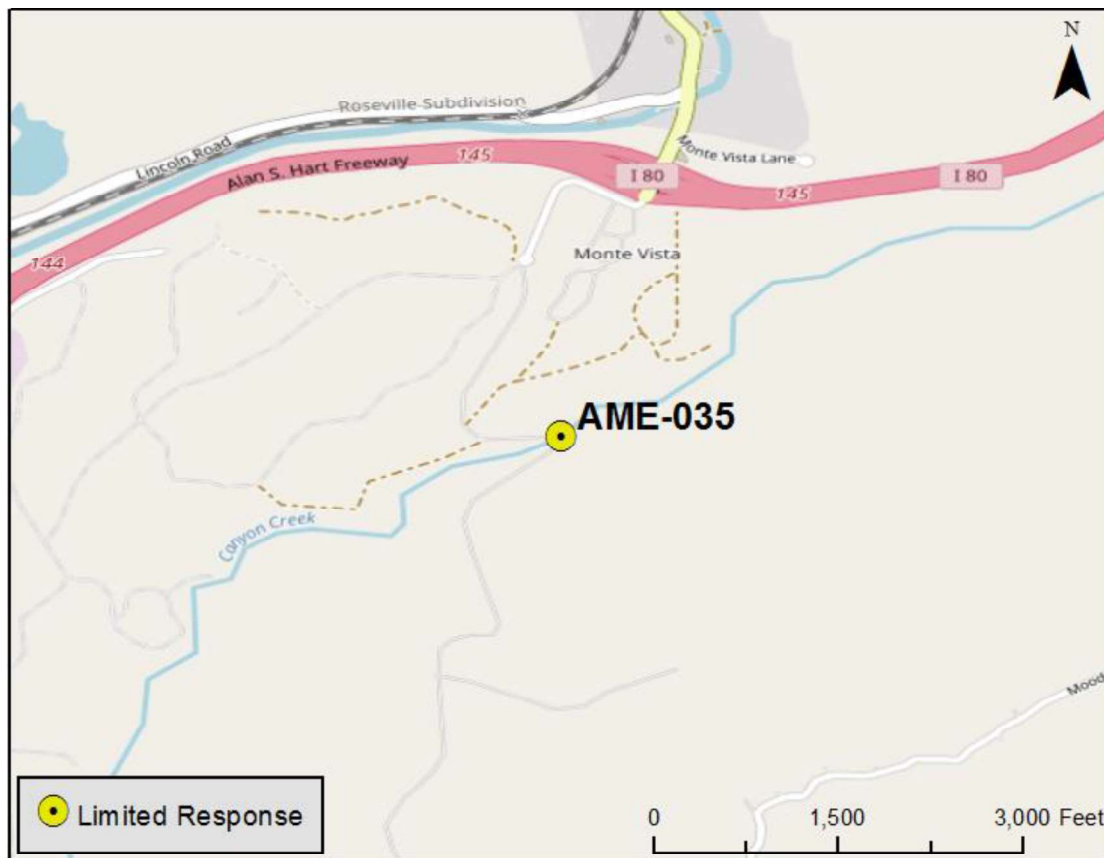
Railroad Milepost: N/A

From the East (Reno): On I-80 West take exit 145, Dutch Flat. Turn left onto Ridge Rd/Canyon Creek Rd and proceed along this road 0.6 miles until it crosses the river site.

Nearest Address and Thomas Guide #:
 55 Canyon Creek Way
 Gold Run, CA 95717

Cell Service: Yes- Verizon tested

Overview Street Map



Hazards, Restrictions and Advice for Responders

- Swift water during winter and spring flows
- Trip and fall hazards, slippery when icy or wet
- Steep riverbanks
- Narrow dirt road limits response vehicles
- Bridge certified for 40,000 lbs. axle weight
- Limited parking near site

Resources-At-Risk

Ecological: coast horned lizard

Economic: N/A

Tribal: Contact the Native American Heritage Commission at (916)-373-3710.

Cultural and Historic: Contact the North Central Information Center at (916)-278-5162.

Site Description and Field Notes

River Width: 10 meters
(33 feet)

Gradient: Medium

Site Contact/s:

Site Location/Segment: AME-PL-E-020

Steep areas and the narrow road could limit access. There are lower banks downstream of the bridge. There is limited parking near this site.

Vehicular Access: 4WD/Pickup/70bbl truck/3 axle empty bin truck

Recreational Use: Fishing

Boat Launches: N/A

ESI Shoreline Type: Vegetated, steeply sloping bluffs (8F), vegetated low banks (9B)

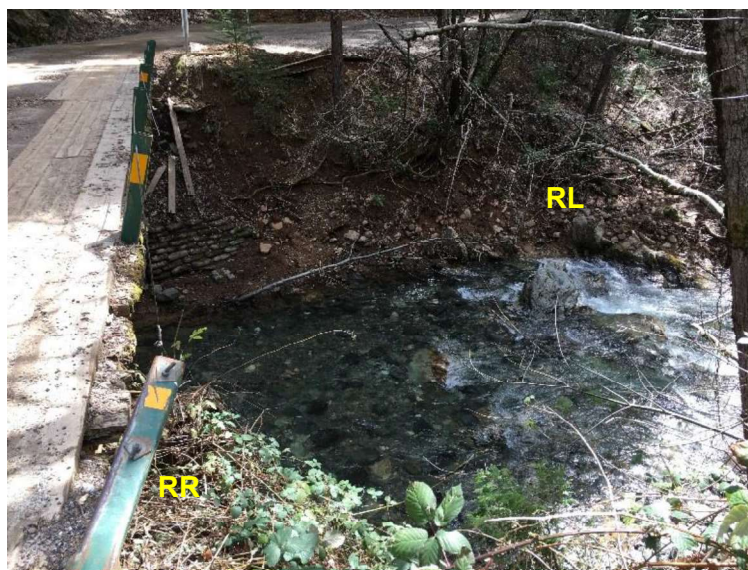
Site Images



Upstream



Downstream



Straight Across

RR = River Right RL = River Left

Photo Date: 03/29/2018

Site Objectives: Collection/Observation

Implementation: During low flows, swift water boom may be deployed or underflow dam. During high flows, absorbent collection only. May need high line and belay/rappelling gear for access.

Staging Area Location and Capabilities/Amenities/Waste Management: No onsite staging. There is a large staging area at the 76 gas station approximately .5 miles north. A Highway Patrol Office is located .4 miles north also and could be a possible ICP location.

Response Strategy Map (overview)



Table of Response Resources

Type	Sub-Type	Size	Unit	QTY - Unit	Special Equipment or Comments
Boom	Sorbent	5 to 8	in	300 ft	5 inches for light oiling, 8 inches for heavier oiling
Boom	Swift Water	8 to 12	in	150 ft	Sections of 50'
Anchors	Danforth	40	lb	40	
Boom Deflector				1	
Vacuum Truck		70	bbl	1	
Pads and Sweep	Sorbent		bales	40	
Personnel	Boat and Shoreline			6 to 12-person crew	
High Line and Belay					Rappelling gear for access
Sandbags					Sandbag dam minimum of 3 ft. high
Piping					For underflow dam