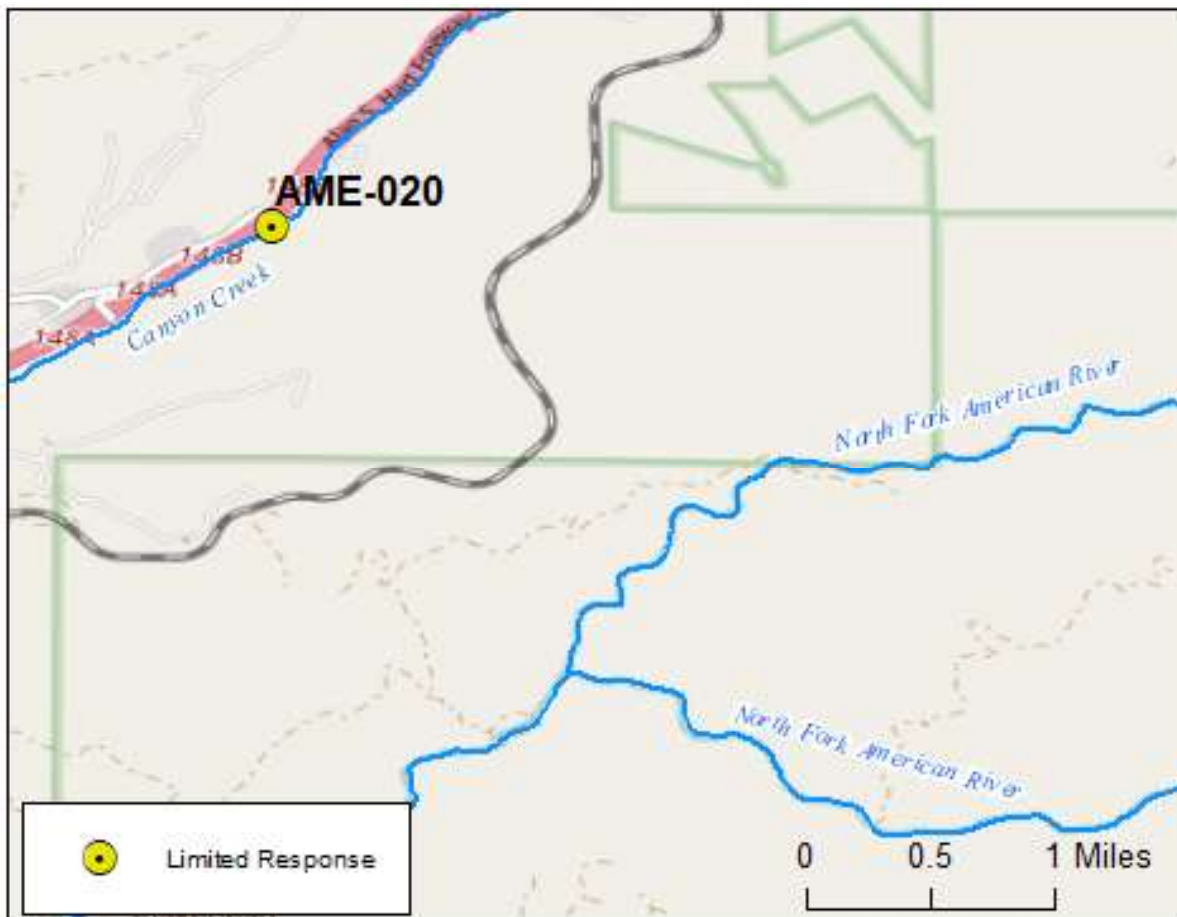


Latitude: 39.214279 Longitude: -120.776442	Driving Directions
Highway Postmile: PLA 47.532	From the West (Sacramento): On I-80 East take exit 148B, Baxter Rd. Turn right and follow the road until it crosses the river site. From the East (Reno): On I-80 West take exit 148B, Baxter Rd. Turn left and follow until the road crosses the river site.
Railroad Milepost: N/A	
Nearest Address and Thomas Guide #: N/A	
Cell Service: Yes- Verizon tested	

Overview Street Map



Hazards, Restrictions and Advice for Responders

- Swift water during winter and spring flows
- Trip and fall hazards, slippery when icy or wet
- Steep riverbanks
- River-left is privately owned property

Resources-At-Risk

Ecological: Sierra Nevada mountain beaver, Foothill Yellow-legged Frog, Sierra blue grass

Economic: Drinking water

Tribal: Contact the Native American Heritage Commission at (916)-373-3710.

Cultural and Historic: Contact the North Central Information Center at (916)-278-5162.

Site Description and Field Notes

River Width: 15 meters
(49 feet)

Gradient: Medium

Site Contact/s:

Private property, contact
Mike Stacher
916-628-7133

Site Location/Segment: AME-PL-E-010

River-left banks are on private property (see site contact).

Vehicular Access: All vehicle access

Recreational Use: Fishing

Boat Launches: N/A

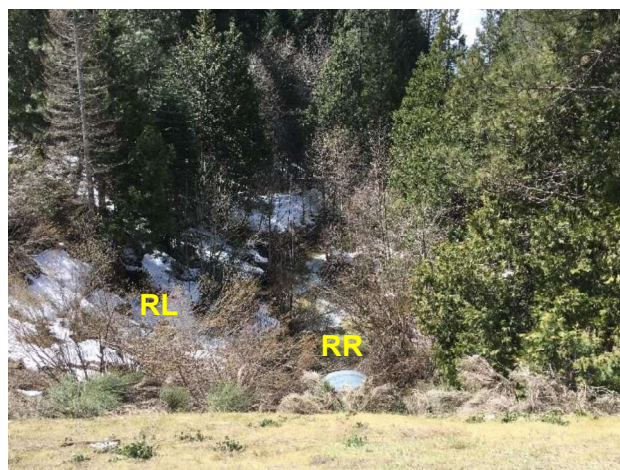
ESI Shoreline Type: Vegetated, steeply sloping bluffs (8F), vegetated low banks (9B)

Site Images



Upstream

Photo Date: 03/29/2018



Downstream

Photo Date: 03/29/2018



Staging Area

Photo Date: 05/30/2018

RR = River Right RL = River Left

Site Objectives: Collection/observation

Implementation: During low flows, swift water boom may be deployed or underflow dam. During high flows, absorbent collection only. May need belay/rappelling gear for access.

Staging Area Location and Capabilities/Amenities/Waste Management: Private parking area with limited staging capabilities.

Response Strategy Map (overview)

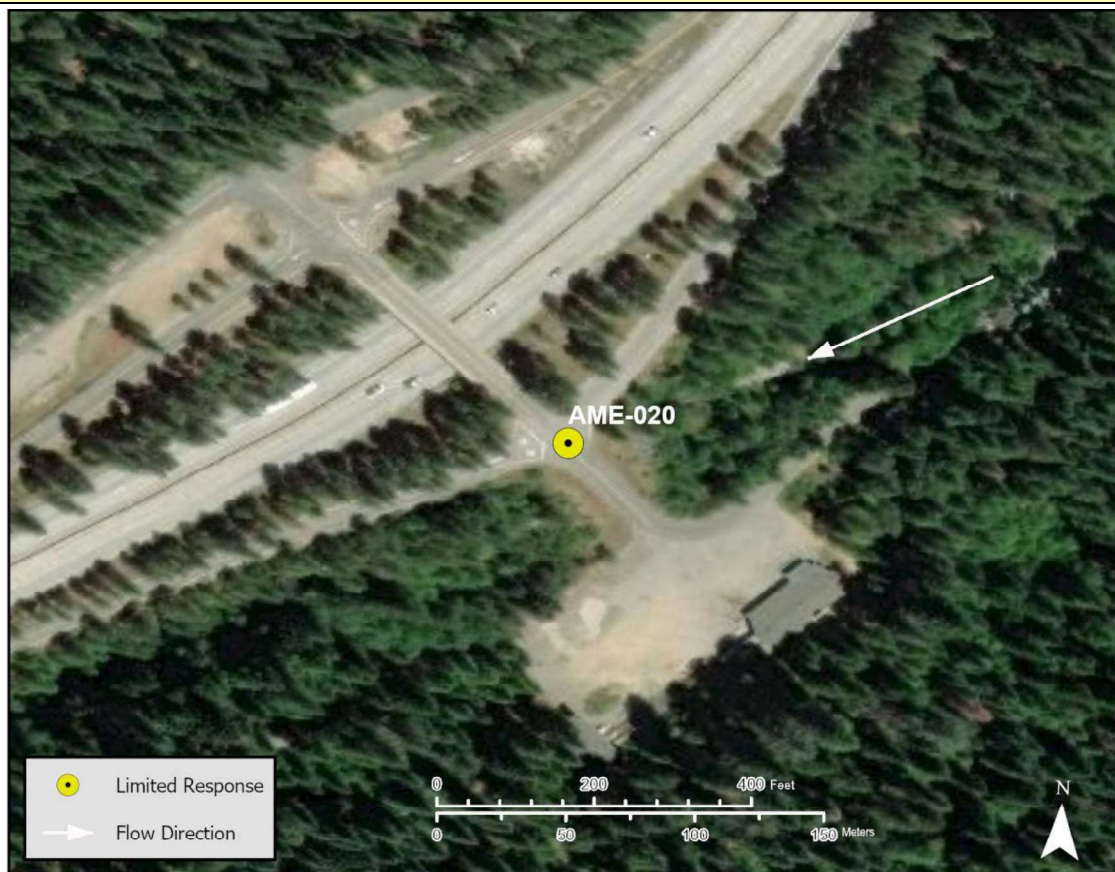


Table of Response Resources

Type	Sub-Type	Size	Unit	QTY - Unit	Special Equipment or Comments
Boom	Sorbent	5 to 8	in	400 ft	5 inches for light oiling, 8 inches for heavier oiling
Boom	Swift Water	8 to 12	in	200 ft	Sections of 50' or 100'
Boom Deflector				2	
Anchor	Danforth	40	lb	2	
Vacuum Truck		70 or 120	bbl	1	
Pads and Sweep	Sorbent		bales	40	
Personnel	Boat and Shoreline			6 to 12-person crew	
High Line and Belay					Rappelling gear for access
Piping					For underflow dam
Sandbags					Sandbag dam minimum of 3 ft. high