

Driving Directions:	From Pacific Coast Highway, enter Huntington State Beach from Magnolia St. Drive to the east end of the parking lot and enter the bike path from the service road near the Huntington State Beach Least Tern Natural Preserve.		
Latitude: 33.634125 Longitude: -117.956873	Highway Postmile: N/A	Railroad Milepost: N/A	Cell Service: Yes

Nearest Address: 21601 Pacific Coast Hwy., Huntington Beach, CA 92646

Thomas Guide #: ORG 858 E-5

Overview Street Map



Hazards, Restrictions and Advice for Responders

- Swift moving water
- Steep manmade slopes and rip rap
- Vehicle/Bicycle/Pedestrian traffic
- Unhoused encampments

Resources-At-Risk

Ecological: Belding's Savannah Sparrow, California Least Tern, Coastal California Gnatcatcher, Least Bell's Vireo, light-footed Ridgway's rail, Southwestern Willow Flycatcher, Western Snowy Plover, Yellow-breasted Chat, Pacific pocket mouse, steelhead - southern California DPS, San Diego fairy shrimp, chaparral sand-verbena, coast woolly-heads, Coulter's goldfields, southern tarplant, San Diego button-celery

Economic: Talbert Nature Preserve, Huntington State Beach

Tribal: Contact the Native American Heritage Commission at (916) 373-3710.

Cultural and Historic: Contact the South Central Coastal Information Center at (657) 278-5395.

Site Description and Field Notes

Site Location/Segment: ANA-OR-C-015	Site Description and Field Notes: Access to the river is from the east end of the parking lot near the Huntington State Beach Least Tern Natural Preserve.			
Gradient: Medium	River Width: 137 meters (450 feet)	Vehicular Access? Passenger vehicles, small trucks, and small trailers.	Recreational Use? Fishing and bike path.	Boat Launches: Small ramp available on county property (see upstream photo).
Site Contact/s:	Orange County Public Works (714) 955-0200		California State Parks (949) 492-0802	
ESI Shoreline Type:	8C Sheltered riprap			

Site Images



Upstream



Downstream



Entrance

RR = River Right RL = River Left

Photo Date: 8/29/2019

Site Objectives: Prevent further movement of oil.

Implementation: Deploy containment boom across river with appropriate angle. Use Danforth anchors to secure.

Staging Area Location and Capabilities/Amenities/Waste Management: Limited staging along bike path and service road. Additional staging available in the California State Parks parking lot. Boom trucks, trailer, vacuum trucks and temporary storage tanks could use the various staging locations. A small launch ramp is also available.

Response Strategy Map (overview)

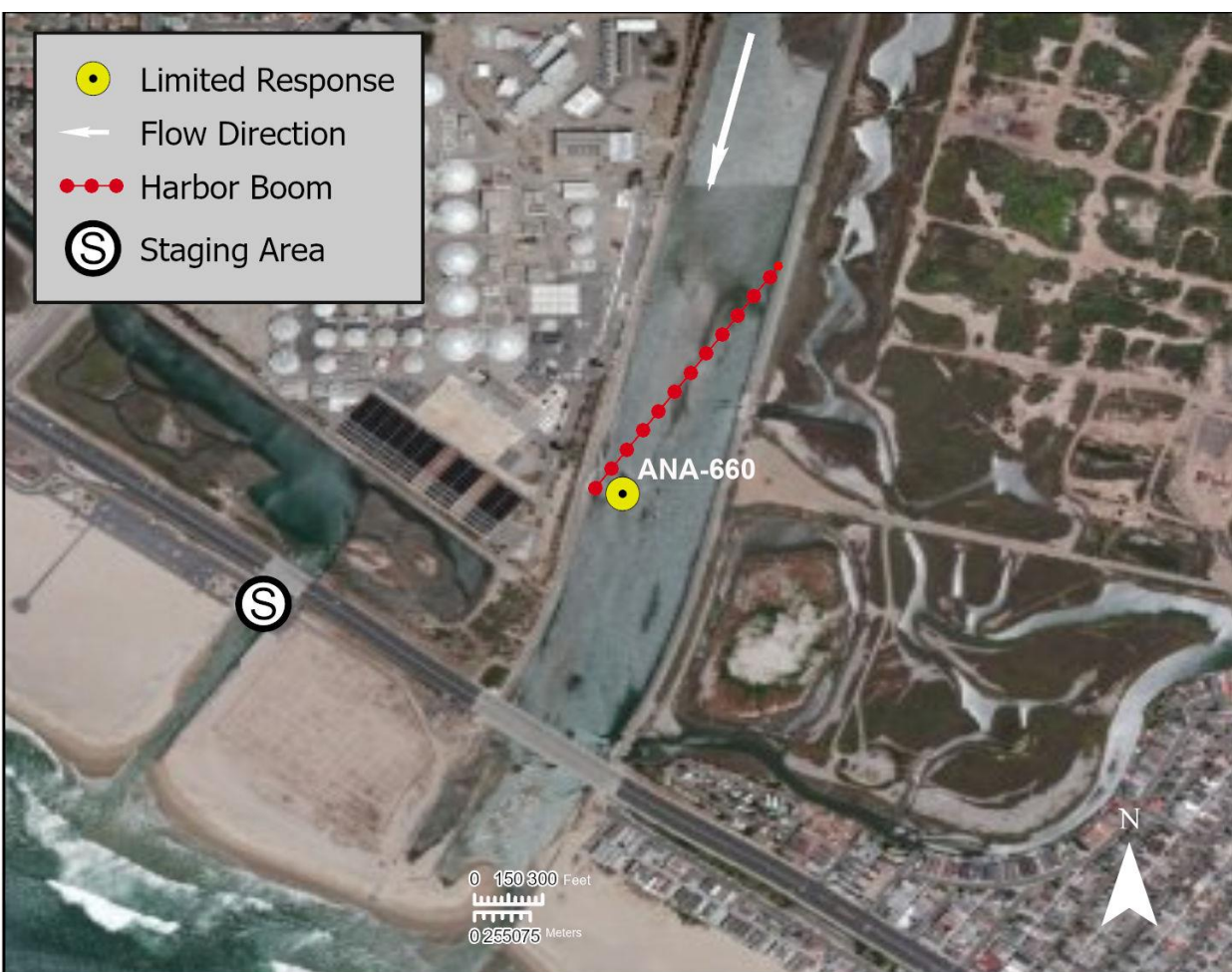


Table of Response Resources

Type	Sub-Type	Size	Unit	QTY - Unit	Special Equipment or Comments
Boom	Swiftwater, Swamp or Harbor	8, 12, or 18	Inch	1000 ft.	
Staff	Staff to Deploy			5	
Boat	Skiff with outboard			1	
Anchors	Danforth	40	lb	4	