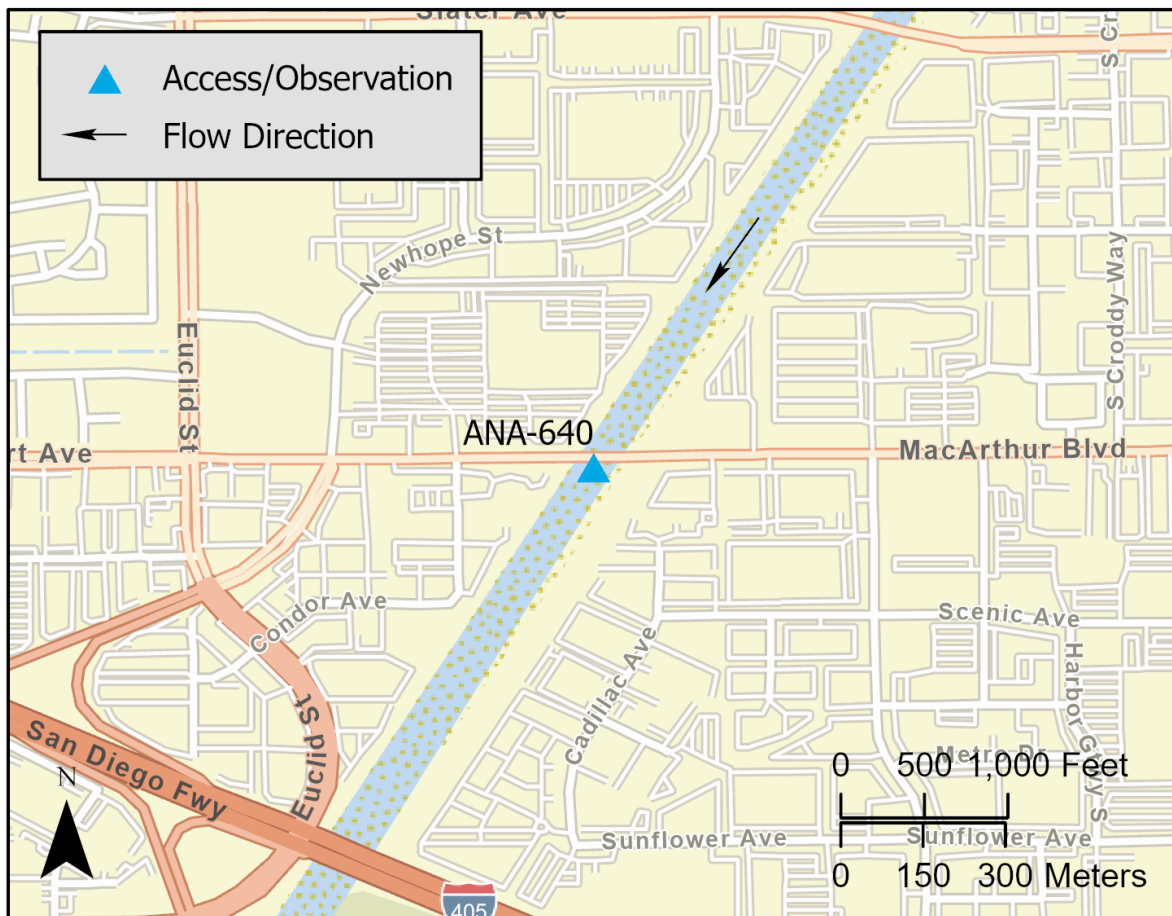


Driving Directions:	From southbound I-405, exit 12 for Euclid St. Head north to Talbert Ave. Head east on Talbert Ave. to the Santa Ana River.
----------------------------	----------------------------------------------------------------------------------------------------------------------------

Latitude: 33.70176704 Longitude: -117.9303218	Highway Postmile: N/A	Railroad Milepost: N/A	Cell Service: Yes
----------------------------------------------------------------	------------------------------	-------------------------------	--------------------------

Nearest Address: 18030 Mt. Washington St., Fountain Valley, CA 92708**Thomas Guide #:** ORG 858H-2

Overview Street Map



Hazards, Restrictions and Advice for Responders

- Steep manmade slopes
- Vehicle/Bicycle/Pedestrian traffic
- Unhoused encampment
- Locked gates

Site Description and Field Notes

Site Location/Segment:
ANA-OR-C-010**Site Description and Field Notes:** Access location from southwest gates. Response equipment can use utility road to access riverbed. Water flow is primarily nuisance water. River width is 75 meters (246 feet).**Site Contact/s:**Orange County Public Works
(714) 955-0200

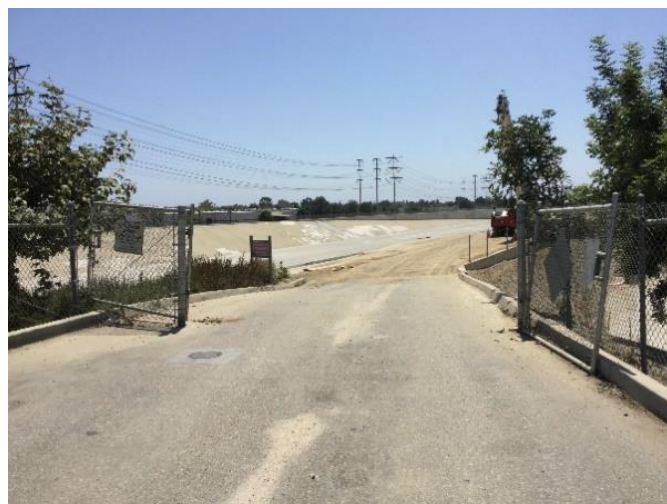
Site Images



Upstream



Downstream



Entrance

RR = River Right RL = River Left

Photo Date: 8/23/2019