

Driving Directions:

From eastbound CA-22, take exit 12A for Harbor Blvd. and head south to 1st St. Head east on 1st St. to the Santa Ana River.

From southbound I-405, take exit 11A for Fairview Rd. and head north to 1st St. Head west on 1st St. to the Santa Ana River.

Latitude: 33.745368
Longitude: -117.911256

Highway Postmile: N/A

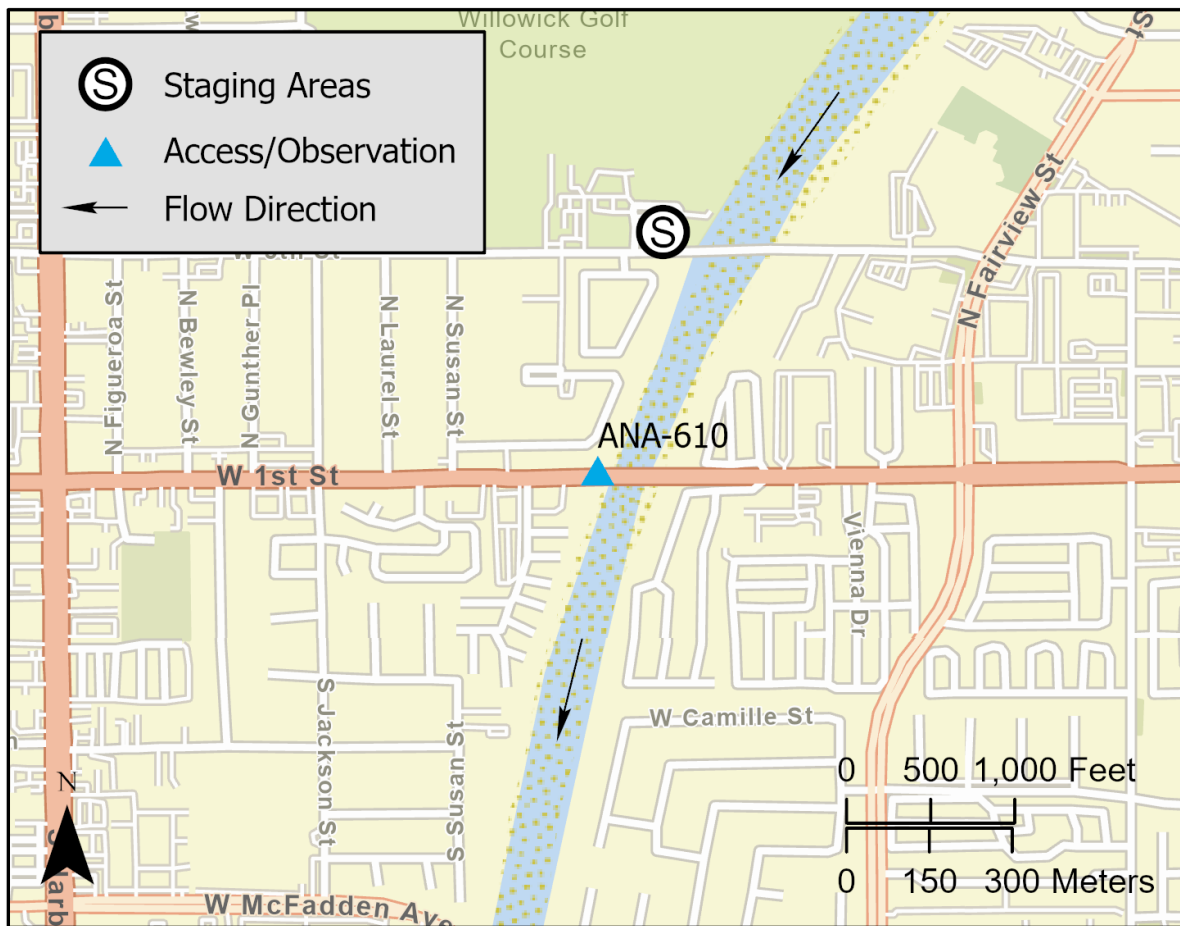
Railroad Milepost: N/A

Cell Service: Yes

Nearest Address: 2934 W 1st St., Santa Ana, CA 92703

Thomas Guide #: ORG 829 A-3

Overview Street Map



Hazards, Restrictions and Advice for Responders

- Steep manmade slopes
- Vehicle/Bicycle/Pedestrian traffic
- Unhoused encampments
- Locked gates

Site Description and Field Notes

Site Location/Segment:
ANA-OR-C-005**Site Description and Field Notes:** Go through gates on northwest side of 1st St. and use utility road to access riverbed. Water flow is primarily nuisance water. Width is 75 meters (246 feet).**Site Contact/s:**Orange County Public Works
(714) 955-0200

Site Images



Upstream



Downstream



Entrance

RR = River Right RL = River Left

Photo Date: 8/23/2019