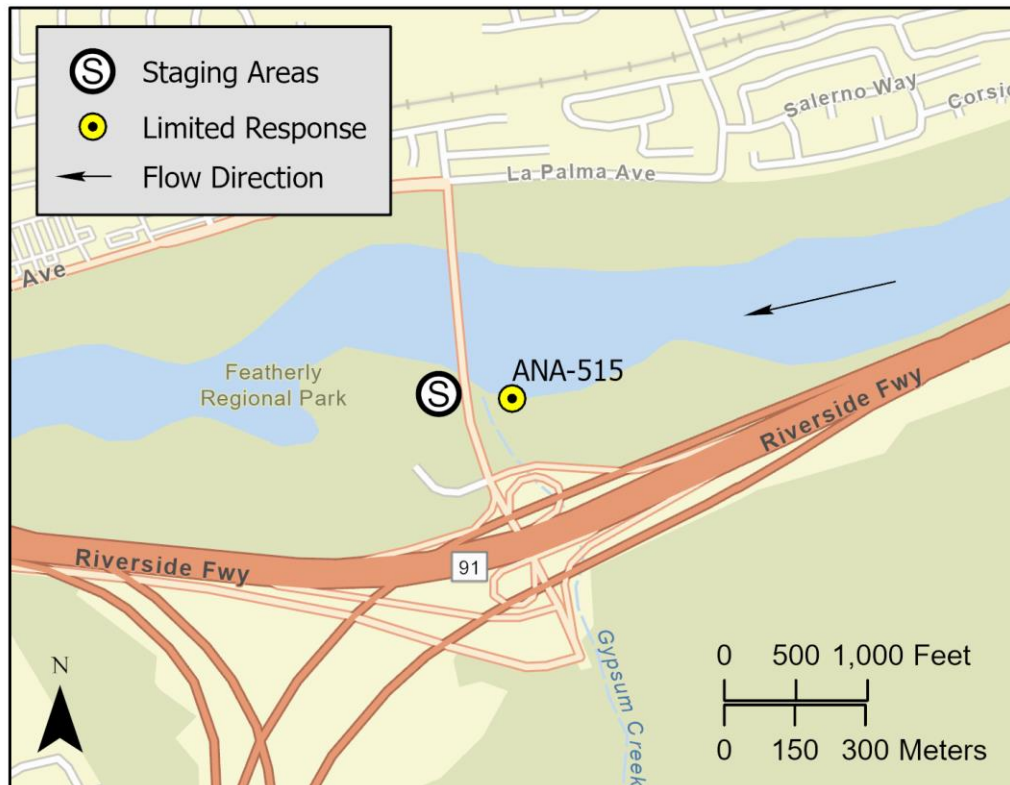


<b>Driving Directions:</b>	From eastbound CA-91, take exit 41 for Gypsum Canyon Rd., head north on Gypsum Canyon Rd. and turn left onto Featherly Park. Enter Canyon RV Park and head east to the parking area.		
<b>Latitude:</b> 33.86968109 <b>Longitude:</b> -117.7118044	<b>Highway Postmile:</b> N/A	<b>Railroad Milepost:</b> N/A	<b>Cell Service:</b> Yes
<b>Nearest Address:</b> 24001 E Santa Ana Canyon Rd., Anaheim, CA 92808 <b>Thomas Guide #:</b> ORG 741 E-6			

## Overview Street Map



## Hazards, Restrictions and Advice for Responders

Swift moving water, densely vegetated banks. Access is through Canyon RV Park. The river runs along the RV park.

## Resources-At-Risk

**Ecological:** Coastal Cactus Wren, Coastal California Gnatcatcher, Least Bell's Vireo, Southwestern Willow Flycatcher, Yellow-breasted Chat, western mastiff bat, Santa Ana sucker, steelhead - southern California DPS, Arroyo Toad, Western Spadefoot, Coast Horned Lizard, Southern California Legless Lizard, Western Pond Turtle, Quino checkerspot butterfly, San Diego fairy shrimp, Braunton's milk-vetch, chaparral nolina, chaparral sand-verbena, intermediate mariposa lily, long-spined spineflower, Santa Ana River woollystar.

**Economic:** Canyon RV Park

**Tribal:** Contact the Native American Heritage Commission at (916) 373-3710.

**Cultural and Historic:** Contact the South Central Coastal Information Center at (657) 278-5395.

## Site Description and Field Notes

<b>Site Location/Segment:</b> <b>ANA-OR-A-005</b>	<b>Site Description and Field Notes:</b> Large staging area available.			
<b>Gradient:</b> Medium	<b>River Width:</b> 60 meters (200 feet)	<b>Vehicular Access?</b> Passenger vehicles, small trucks, and small trailers.	<b>Recreational Use?</b> RV camping, hiking, and bike path.	<b>Boat Launches:</b> N/A
<b>Site Contact/s:</b> Canyon RV Park 24001 E Santa Ana Canyon Rd, Anaheim, CA	Orange County Public Works (714) 955-0200		Orange County Water District (714) 378-3200	
<b>ESI Shoreline Type:</b>	9B Vegetated low banks			

## Site Images



Upstream



Downstream



Straight Across



Entrance

RR = River Right RL = River Left

Photo Date: 5/21/2019

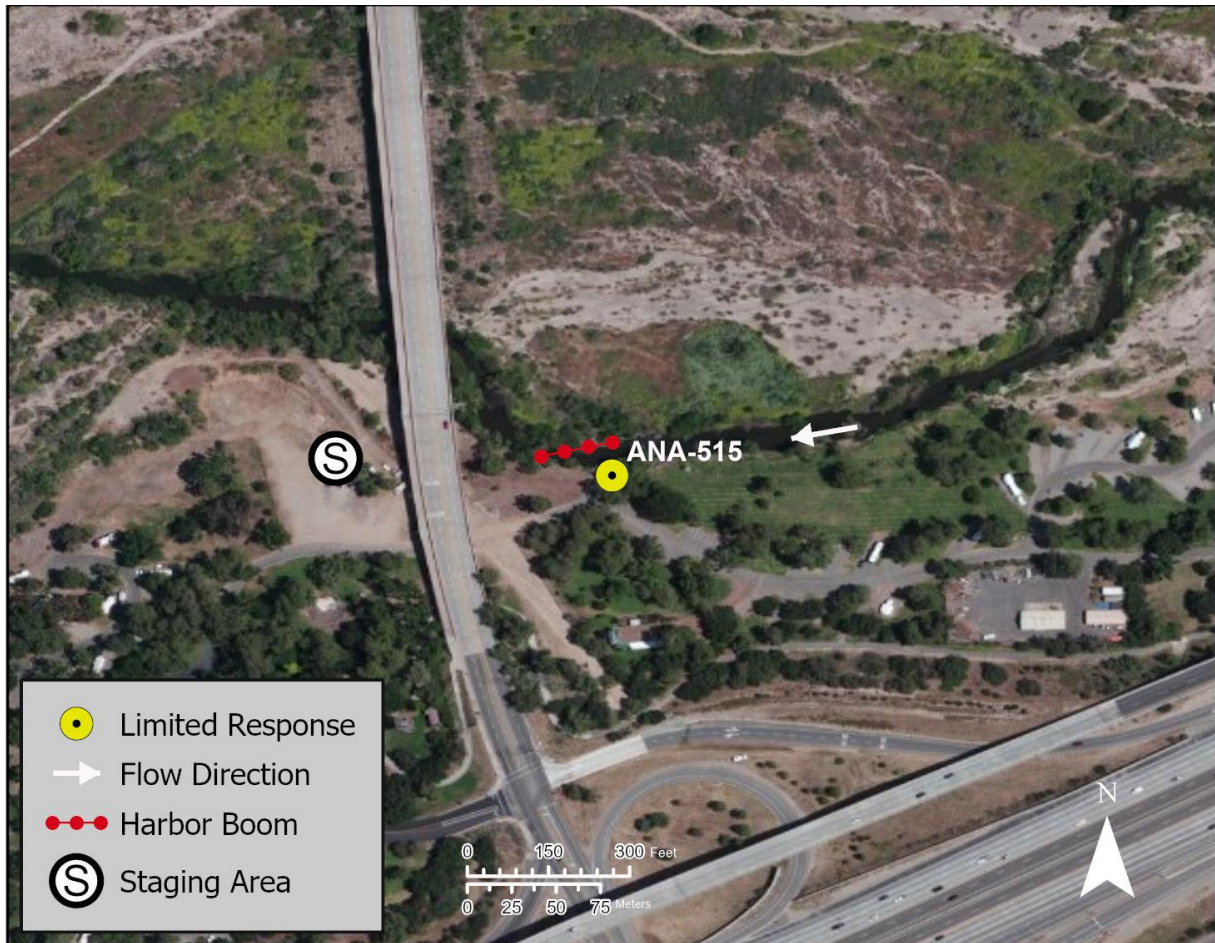


**Site Objectives:** Prevent further movement of oil.

**Implementation:** Deploy containment boom across river with appropriate angle. Use existing trees as anchor points or Danforth anchors.

**Staging Area Location and Capabilities/Amenities/Waste Management:** Boom trucks, trailers, vacuum trucks and temporary storage tanks could use the parking areas.

### Response Strategy Map (overview)



**Table of Response Resources**

Type	Sub-Type	Size	Unit	QTY - Unit	Special Equipment or Comments
Boom	Swiftwater, Swamp, or Harbor	8, 12, or 18	Inch	200 ft.	
Staff	Staff to Deploy			5	
Boat	Punt			1	
Anchors	Danforth	20	lb	2	