

**Latitude:** 38.590994  
**Longitude:** -121.510186

### Driving Directions

**Highway Postmile:** SAC 24.25

**Railroad Milepost:** N/A

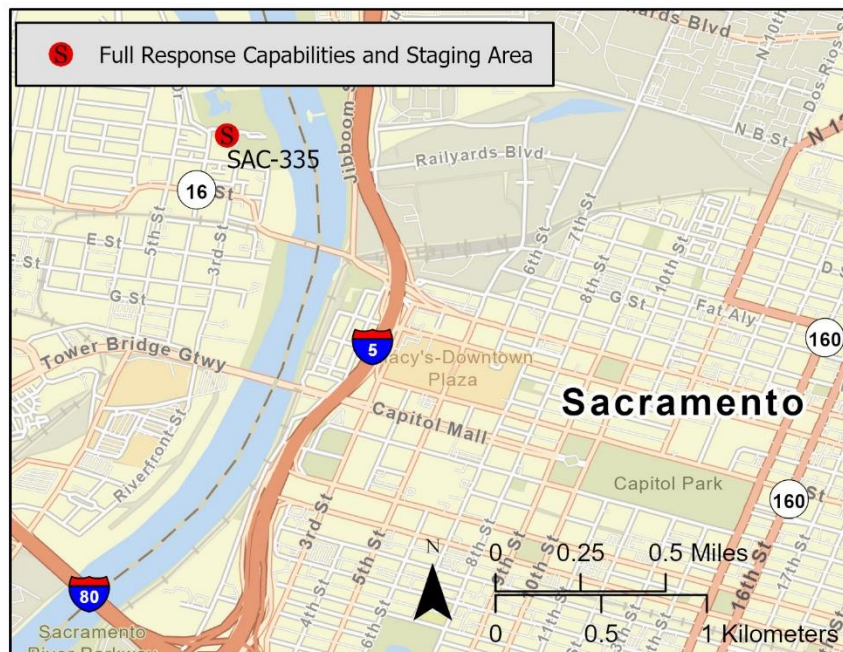
**Nearest Address:**  
 103 4<sup>th</sup> Street  
 West Sacramento  
**Thomas Guide #:** 319/2C

**Cell Service:** Yes –  
 Verizon tested

From South: Use I-80 East, take Exit 3 toward Downtown Sacramento/Jefferson Blvd. Keep left to continue to Tower Bridge Gateway, follow signs for Downtown Sacramento. Turn left onto 5<sup>th</sup> Street, right onto C Street, left at the 1<sup>st</sup> cross street onto 4<sup>th</sup> Street. Turn right to Broderick Boat Ramp parking area.

From North: Use I-5 South, take Exit 520 for Richards Blvd., turn right on Richards Blvd. Turn right after America's Best Value Inn (on the left). After park kiosk (entrance) continue on Jibboom Street. Right onto I Street Bridge. Slight left onto C Street. Right onto 4<sup>th</sup> Street. Turn right to Broderick Boat Ramp parking area.

### Overview Street Map



### Hazards, Restrictions and Advice for Responders

- Trip and fall hazards, slippery when icy or wet
- Fast moving water at times of high flow
- Downed trees near shore
- Submerged objects
- Area utilized by a large amount of unhoused community
- High use public recreation area
- Pipeline crossing (under the river) just south of the boat launch

### Resources-At-Risk

**Ecological:** Least Bell's Vireo, Western Yellow-billed Cuckoo, Longfin Smelt, Sacramento Splittail, Steelhead – Central Valley DPS, Valley Elderberry Longhorn Beetle

**Economic:** Riverwalk Park, Sacramento Water Treatment Plant, Matsui Waterfront Park

**Tribal:** Contact the Native American Heritage Commission at (916) 373-3710.

**Cultural and Historic:** Contact the North Central Information Center at (916) 278-6217.

## Site Description and Field Notes

**River Width:** 133 m  
(436 ft)

**Gradient:** Medium

**Site Contact(s):**

City of Sacramento –  
Parks & Recreation:  
(916) 617-4620

**Site Location/Segment:** SAC-SA-A-020

Large boat launch facility upstream of the I Street Bridge. Large parking area with facilities, suitable staging area. North of Riverwalk Park – trail alongside river right of the Sacramento River. An intake for Sacramento River Water Treatment Plant is just across the river from the boat launch.

**Vehicular Access:** Heavily vegetated shoreline precludes vehicle access

**Recreational Use:** Fishing, boating, walking trails

**Boat Launches:** Boat launch on site

**ESI Shoreline Type:** 9B – Vegetated Low Banks; 8B – Man-made Structures

## Site Images



Upstream



Downstream



Straight Across

RR = River Right   RL = River Left

Photo Date: 8/21/19

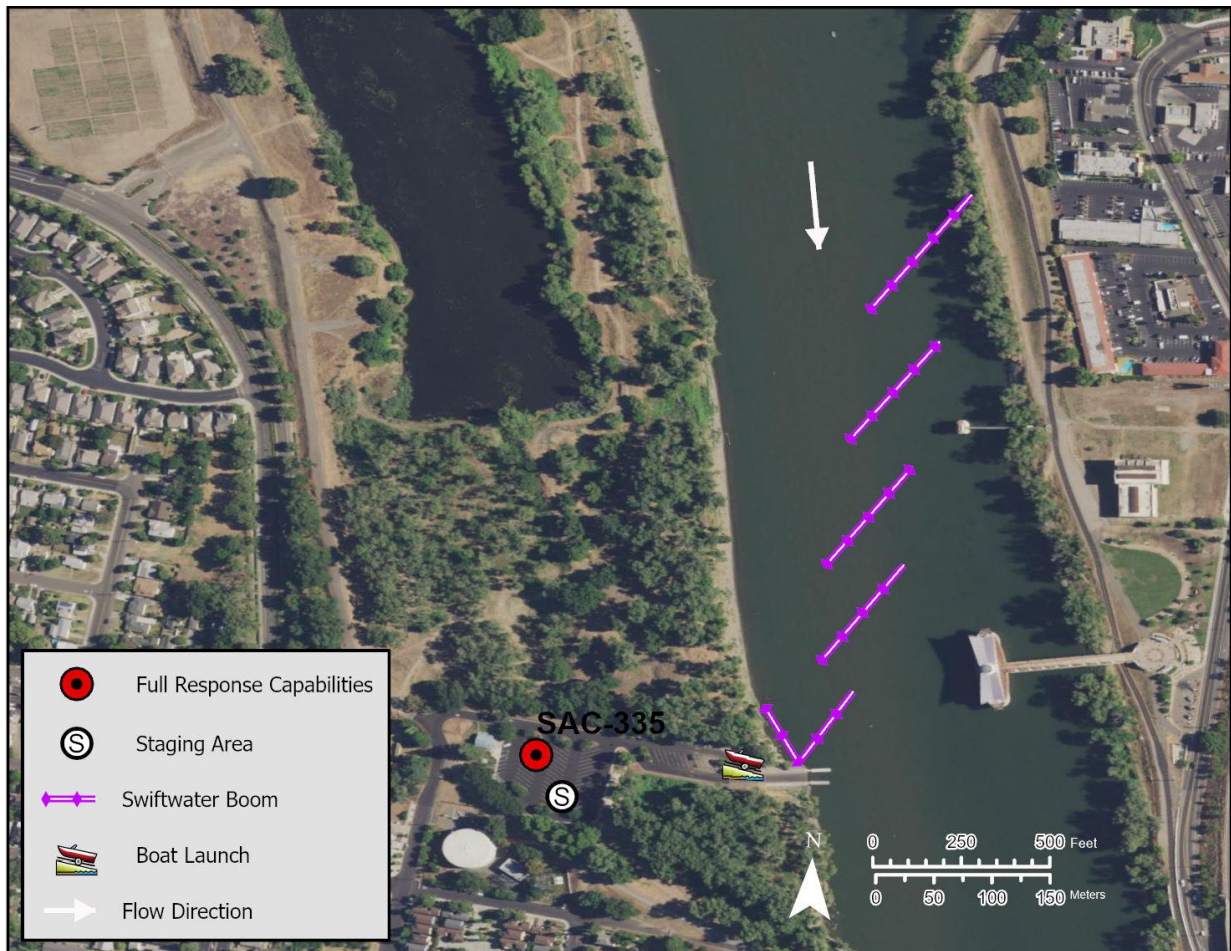


**Site Objectives:** Deflection/Collection

**Implementation:** Cascade 4 – 400-foot boom lengths across river from north of intake toward boat launch; extend 300 feet of boom from apex of boat dock extending to out; line shoreline with 200 feet of boom.

**Staging Area Location and Capabilities/Amenities/Waste Management:** On-site staging area

### Response Strategy Map (overview)



### Table of Response Resources

| Type      | Sub-Type   | Size        | Unit | QTY - Unit | Special Equipment or Comments                  |
|-----------|------------|-------------|------|------------|--|
| Boom      | Swiftwater | 6 in x 6 in | ft   | 2,100      |  |
| Anchors   | Danforth   | 25          | lb   | 24         |  |
| Stakes    |            |             |      | 6          | Use to secure boom to shore                    |
| Boat      |            | 25          | ft   | 2          | Response vessel                                |
| Personnel |            |             |      | 8          | 2 people on each vessel, 4 people on the shore |
|           |            |             |      |            |  |