

Latitude: 38.61222

Longitude: -121.611250

Highway Postmile: SAC 33.766

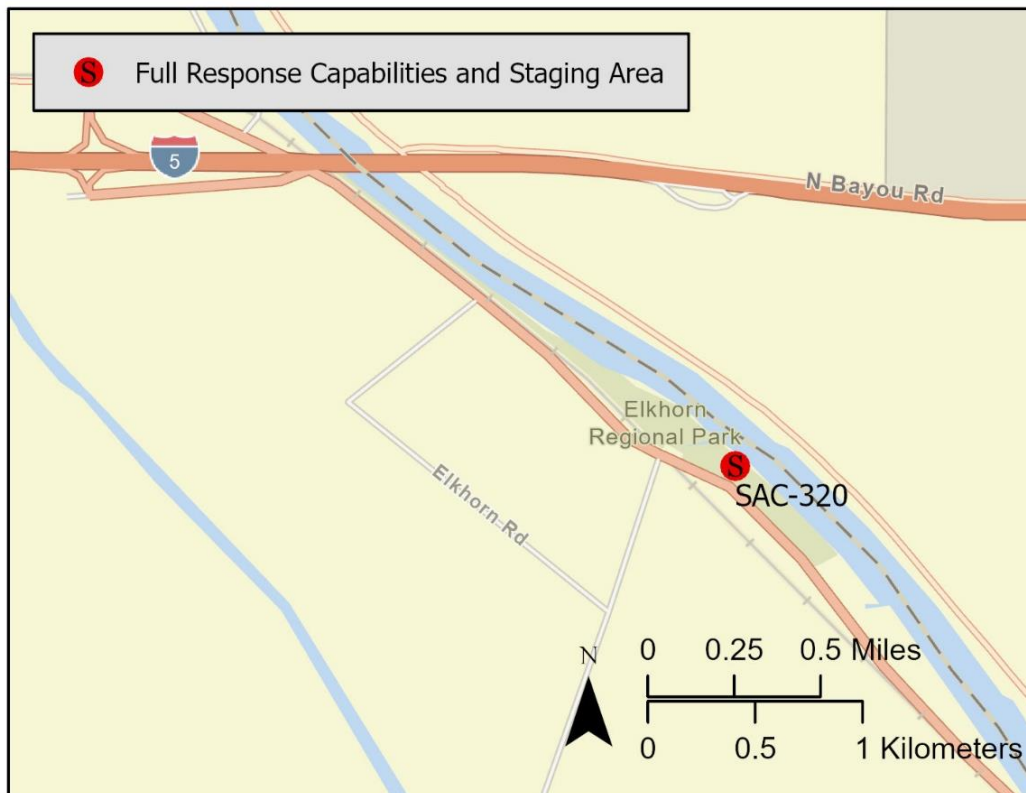
Railroad Milepost: N/A

Nearest Address:

18989 Old River Rd., West Sacramento

Thomas Guide #: 234/D5**Cell Service:** Yes – Verizon tested**Driving Directions**

From I-5: Take Exit 531 toward Road 22. Left onto County Road 118. Right onto Old River Road. Turn left into Elkhorn Regional Park.

Overview Street Map**Hazards, Restrictions and Advice for Responders**

- Trip and fall hazards, slippery when icy or wet
- Fast moving water at times of high flow
- Downed trees near shore
- Submerged objects

Resources-At-Risk

Ecological: Swainson's Hawk, Longfin Smelt, Sacramento Splittail, Steelhead – Central Valley DPS, Valley Elderberry Longhorn Beetle

Economic: Elkhorn Regional Park, agricultural water intakes in area

Tribal: Contact the Native American Heritage Commission at (916) 373-3710.

Cultural and Historic: Contact the North Central Information Center at (916) 278-6217.

Site Description and Field Notes

River Width: 201 m
(659 ft)

Gradient: Low

Site Contact(s):
Yolo County
(530) 406-4880

Site Location/Segment: SAC-SA-A-010

This stretch of river has heavily vegetated banks on both its sides. Large parking area with facilities which could be used for staging. No shoreline access.

Vehicular Access: No shoreline access at this site

Recreational Use: Rafting, boating, fishing

Boat Launches: On-site facilities

ESI Shoreline Type: 8B – Vegetated low banks

Site Images



Upstream



Downstream



Straight Across

RR = River Right RL = River Left

Photo Date: 8/22/19

Site Objectives: Deflection/Collection

Implementation: Cascade 3 – 400-foot legs of boom toward boat launch for collection; use 300 feet of boom to line shoreline and use to collect product.

Staging Area Location and Capabilities/Amenities/Waste Management: Staging area on site

Response Strategy Map (overview)

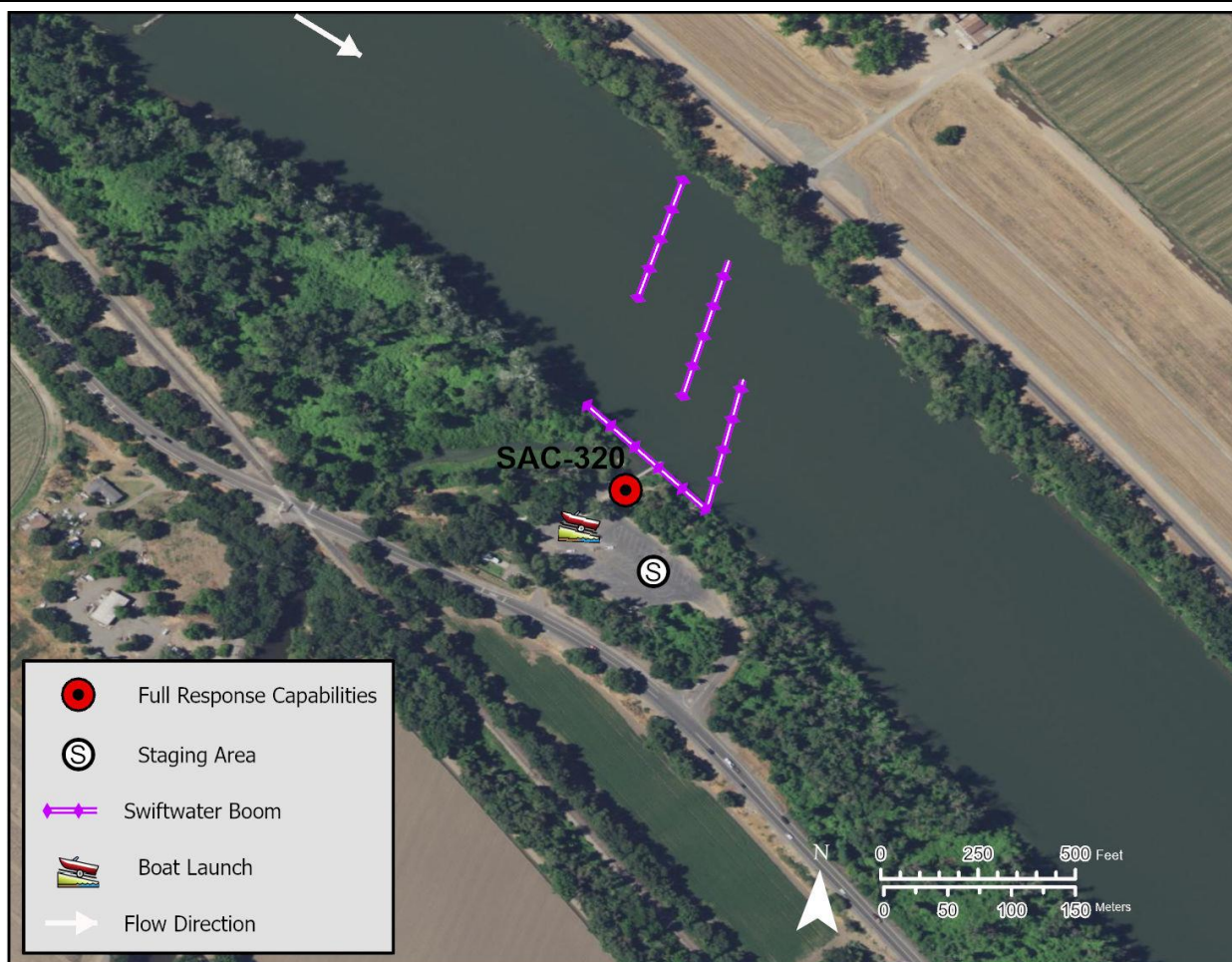


Table of Response Resources

Type	Sub-Type	Size	Unit	QTY - Unit	Special Equipment or Comments
Boom	Swiftwater	6 in x 6 in	ft	1,500	
Anchors	Danforth	25	lb	15	
Stakes				6	Use to secure boom to shore
Boat		25	ft	2	Response vessel
Personnel				8	2 people on each vessel, 4 people on the shore