

Latitude: 39.2169

Longitude: -122.0125

Highway Postmile: COL
31.195

Railroad Milepost: N/A

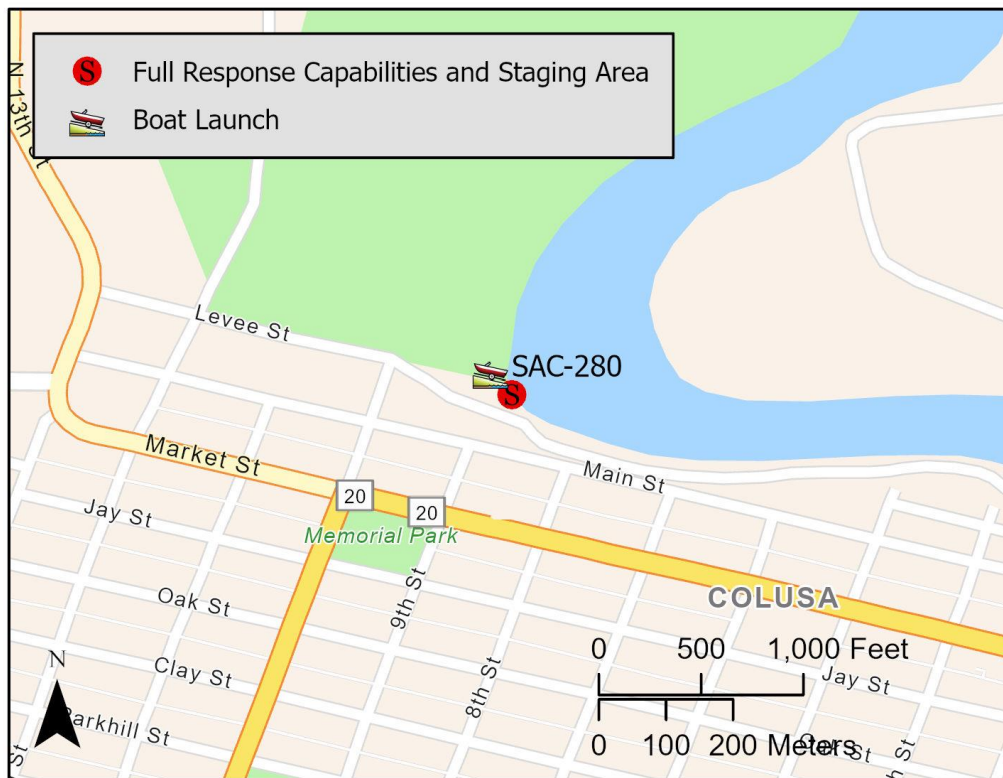
Nearest Address:

810 Main St., Colusa

Thomas Guide #: 163/B1**Cell Service:** Yes – Verizon
tested**Driving Directions**

From North: Use I-5 South, take Exit 586 to Maxwell Colusa Road. Left on Maxwell Colusa Road. Right on CA-45S. Left on Main Street (in Colusa). Left on to 10th Street, continue onto Levee Street to parking area.

From South: Use I-5 North, take Exit 569 for Hahn Road. Right on Hahn Road. Left onto Lone Star Road. Right onto State Hwy 20, continue onto 10th Street (in Colusa), straight onto Levee Street into Colusa Boat Launch.

Overview Street Map**Hazards, Restrictions and Advice for Responders**

- Trip and fall hazards, slippery when icy or wet
- Fast moving water at times of high flow
- Downed trees near shore
- Submerged objects

Resources-At-Risk**Ecological:** Tricolored Blackbird, Steelhead – Central Valley DPS, Longfin Smelt**Economic:** Sacramento River State Recreation Area, Sacramento River National Wildlife Area**Tribal:** Contact the Native American Heritage Commission at (916) 373-3710.**Cultural and Historic:** Contact the Northwest Information Center at (707) 664-0880.

Site Description and Field Notes

River Width: 140 m
(462 ft)

Gradient: Medium

Site Contact/s:

City of Colusa
(530) 329-9198

Site Location/Segment: SAC-CO-A-045

Site adjacent to Colusa-Sacramento River State Recreation Area and Sacramento State Park. There is approximately 9 yards of sand adjacent to boat launch which may be a good place to ground oil. Current is very strong in the center of the river. Site has a large parking area and launch facility. Can be used as a staging area.

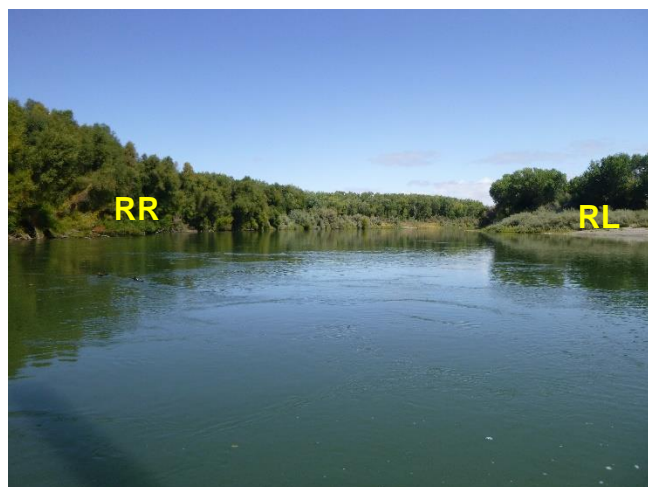
Vehicular Access: No vehicle access along shore

Recreational Use: Boating, fishing, rafting

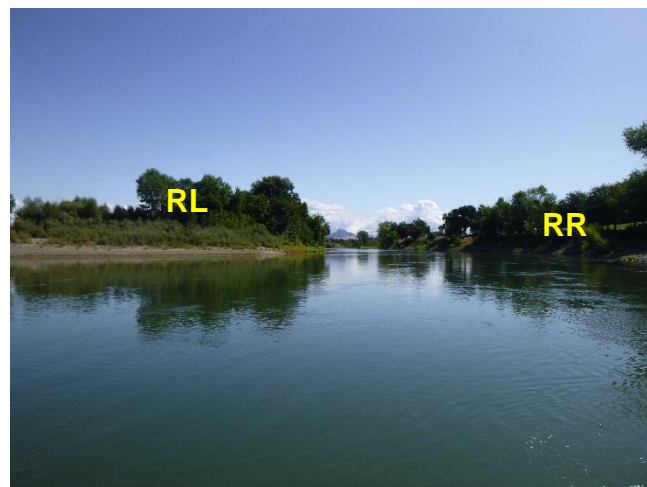
Boat Launches: Boat launch on site

ESI Shoreline Type: 9B – vegetated low banks

Site Images



Upstream



Downstream



Straight Across

RR = River Right RL = River Left

Photo Date: 09/18/19

Site Objectives: Deflection/Collection

Implementation: Use two legs – 400-feet each, to cascade and deflect product away from river left shore to collect near boat ramp on river right shore. Use additional 300 feet of boom to corral product toward boat ramp. Use another 300 feet to line shoreline and boat dock.

Staging Area Location and Capabilities/Amenities/Waste Management: Large staging area on site.

Response Strategy Map (overview)

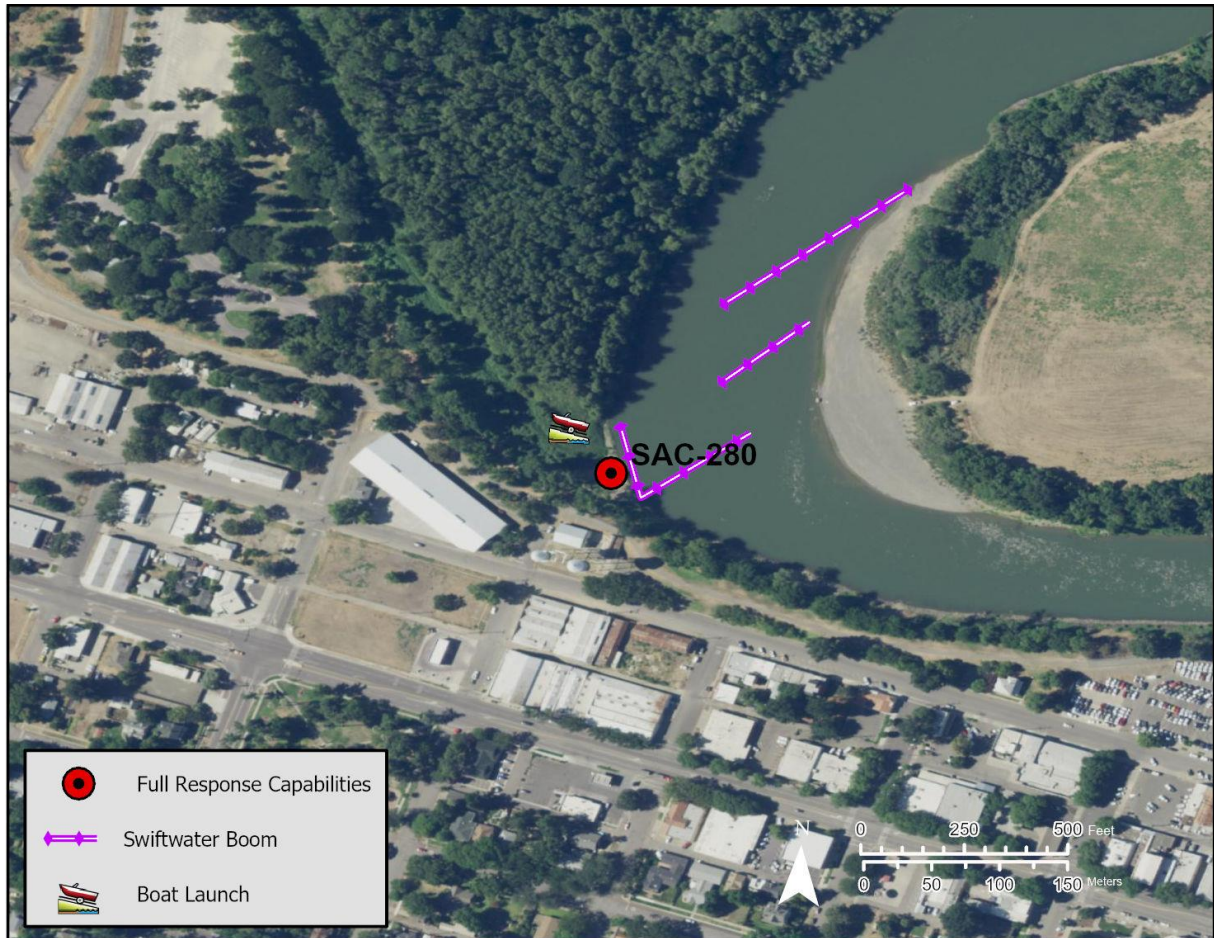


Table of Response Resources

Type	Sub-Type	Size	Unit	QTY - Unit	Special Equipment or Comments
Boom	Swiftwater	6 in x 6 in	ft	1,400	
Boom	Sorbent		ft	300	
Anchor	Danforth	22	lb	11	
Stakes				6	
Boat				2	Support vessel
Personnel				8	2 people per vessel, 4 shoreside