

Latitude: 39.4648
Longitude: -121.9921

Driving Directions

Highway Postmile: GLE 78.083

Railroad Milepost: N/A

Nearest Address:
 8300 Hwy 162, Butte City

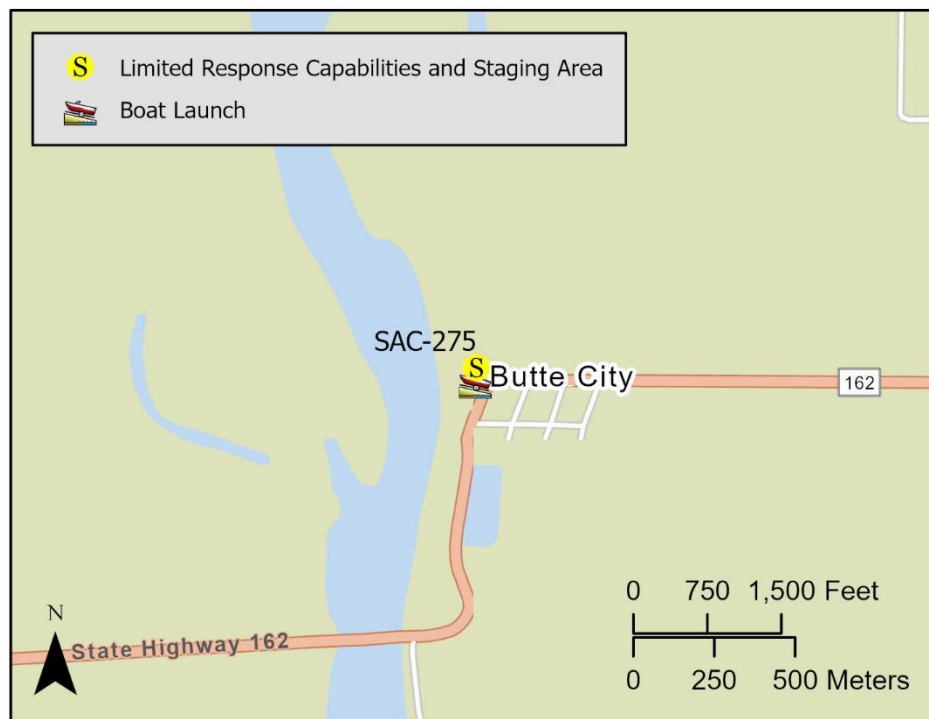
Thomas Guide #: 163/B1

Cell Service: Yes – Verizon tested

From North: Use I-5 South, take Exit 601, left on 1-5 BUS. Right onto Hwy 99 West. Left onto Road-60, continue onto Road 61, continue onto CA-162E to Butte City. Turn left to Butte City Launching Facility.

From South: Use 1-5 North, take Exit 569 for Hahn Road. Left onto Lone Star Road. Right onto Hwy 20E. Left on Market Street (in Colusa), continue on CA-45N/13th Street. Right onto CA-162E. Continue to Butte City, left to Butte City Launching Facility.

Overview Street Map



Hazards, Restrictions and Advice for Responders

- Trip and fall hazards, slippery when icy or wet
- Fast moving water at times of high flow
- Downed trees near shore
- Submerged objects

Resources-At-Risk

Ecological: Bank Swallow, Western Yellow-billed Cuckoo, Swainson's Hawk, Tricolored Blackbird, steelhead – Central Valley DPS, Giant Garter Snake, Valley Elderberry Longhorn Beetle

Economic: Fish guiding services

Tribal: Contact the Native American Heritage Commission at (916) 373-3710.

Cultural and Historic: Contact the Northeast Information Center at (530) 898-6256.

Site Description and Field Notes

River Width: 149 m
(489 ft)

Gradient:
Medium/High

Site Contact(s):
Glenn County
(530) 934-6545

Site Location/Segment: SAC-GL-C-010

Moderate size parking with limited facilities (port-o-potties), could be used as a staging area. Area is subject to high flow. River left in this area is probably 550 m of gravel beach exposed when river is at moderate flow. River right (near boat launch) spots of gravel but predominantly riparian vegetation. Difficult area to collect product (due to high flow).

Vehicular Access: No shoreline vehicle access

Recreational Use: Rafting, fishing, boating

Boat Launches: launching facility on site

ESI Shoreline Type: 9B – Vegetated low banks, 6A – Gravel beaches

Site Images



Upstream



Downstream



Straight Across

RR = River Right RL = River Left

Photo Date: 9/18/19

Site Objectives: Deflection/Collection

Implementation: Cascade 4 - 400-foot sections of boom from river right towards collection on river left shore. Collection may only be possible at low(er) flows. Use 150 feet of boom to line shoreline.

Staging Area Location and Capabilities/Amenities/Waste Management: Staging on site.

Response Strategy Map (overview)

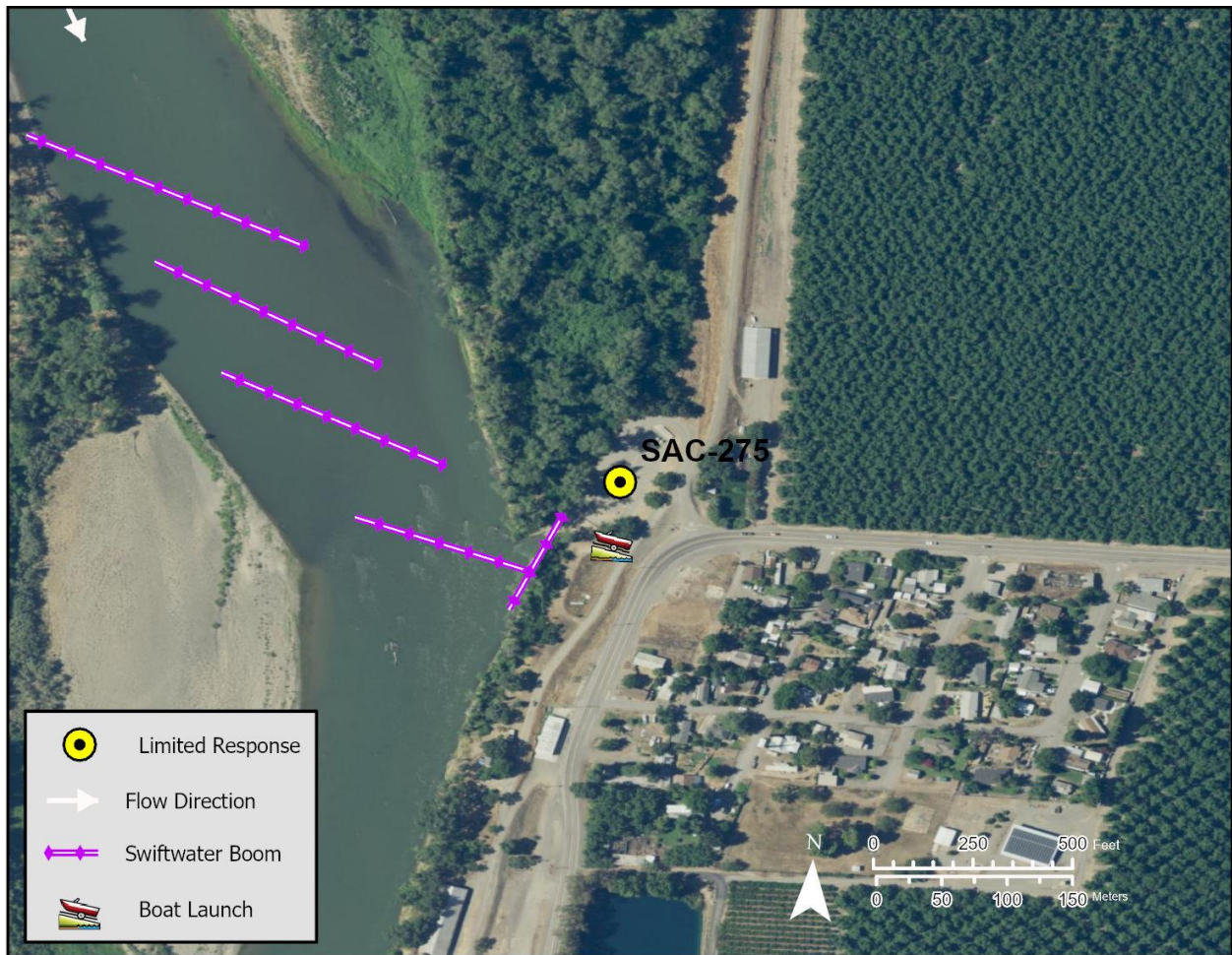


Table of Response Resources

| Type | Sub-Type | Size | Unit | QTY - Unit | Special Equipment or Comments |
|-----------|------------|-------------|------|------------|--|
| Boom | Swiftwater | 6 in x 6 in | ft | 1,750 | |
| Anchor | Danforth | 22 | lb | 17 | |
| Stakes | | | | 6 | Use stakes to secure boom to shoreline |
| Boat | | 25 | ft | 2 | Support vessel |
| Personnel | | | | 8 | 2 people on each vessel, 4 people on shore |
| | | | | | |
| | | | | | |