

**Latitude:** 39.6299  
**Longitude:** -121.9943

### Driving Directions

**Highway Postmile:** GLE 15.169

**Railroad Milepost:** N/A

**Nearest Address:**  
 8201 Ord Ferry Rd., Glenn 95943

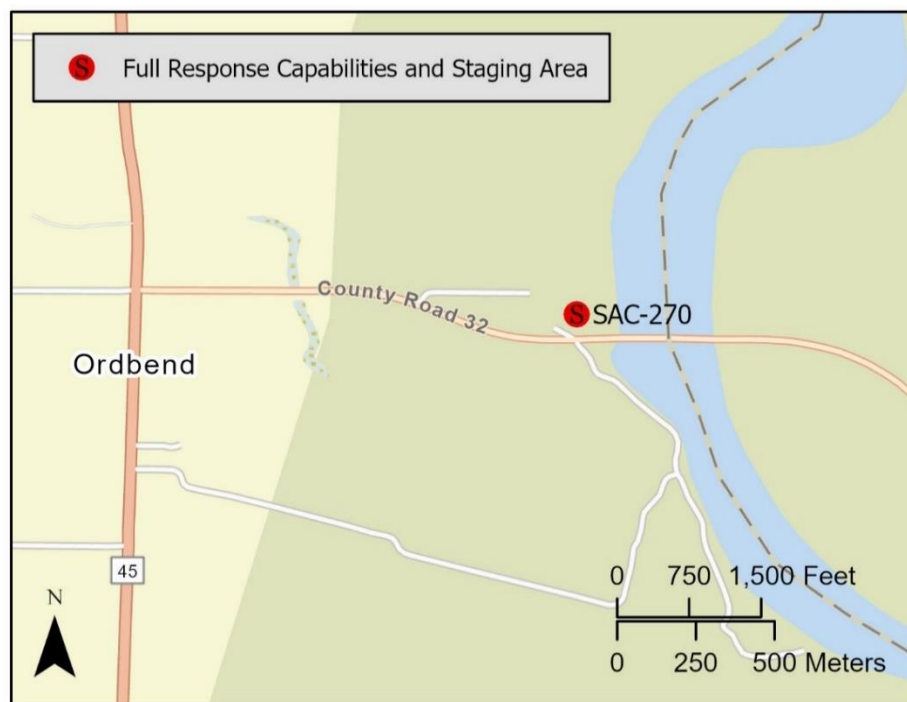
**Thomas Guide #:** 163/3B

**Cell Service:** Yes – Verizon tested

From North: Use I-5 South, take Exit 619 for CA-32 toward Orland/Chico. Turn right onto CA-45 S/Canal St. Left onto County Road 32. Left into Ord Bend Park Boat Launch.

From South: Use I-5 North, take Exit 569 for Hahn Road. Turn right on Hahn Rd. Left on Lone Star Road. Right on Hwy-20. Left on Market Street (in Colusa), continue onto CA-45/13<sup>th</sup> Street. Right onto County Rd-32, turn into Ord Bend Park.

### Overview Street Map



### Hazards, Restrictions and Advice for Responders

- Trip and fall hazards, slippery when icy or wet
- Fast moving water at times of high flow
- Downed trees near shore
- Submerged objects

### Resources-At-Risk

**Ecological:** Bank Swallow, Steelhead – Central Valley DPS, Giant Garter Snake

**Economic:** Fish guiding services

**Tribal:** Contact the Native American Heritage Commission at (916) 373-3710.

**Cultural and Historic:** Contact the Northeast Information Center at (530) 898-6256.

## Site Description and Field Notes

<b>River Width:</b> 118.87 m (390 ft)	<b>Site Location/Segment: SAC-GL-B-035</b> Heavily vegetated banks on river right; gravel shoreline on river left. Large parking area with facilities that could be used as a staging area. Roads in the area are subject to flooding. No public access to river left. Inlet that leads to boat launch is dynamic and is subject to change from year to year. <b>Vehicular Access:</b> No access along shoreline <b>Recreational Use:</b> Fishing, rafting <b>Boat Launches:</b> Boat launch facility on site <b>ESI Shoreline Type:</b> 9B – Vegetated low banks, 6A – Gravel beaches
<b>Gradient:</b> Medium	
<b>Site Contact(s):</b>  Glenn County Parks (530) 934-6545	

## Site Images



Upstream



Downstream



Straight Across

RR = River Right    RL = River Left
-------------------------------------

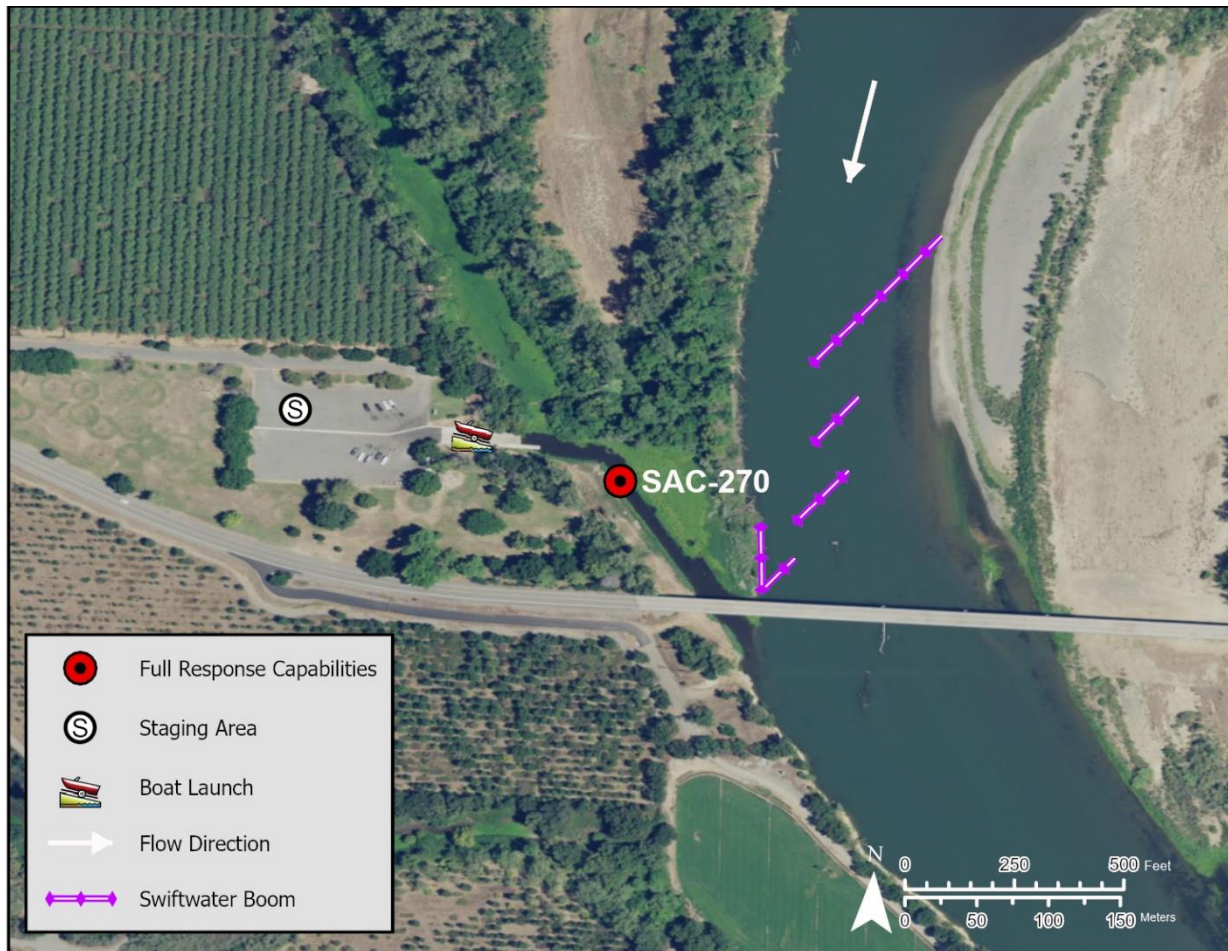
Photo Date: 9/18/19

**Site Objectives:** Deflection/collection

**Implementation:** Cascade using 4 - 300-foot sections of boom from river left shoreline to the river right shoreline just below the inlet. Use additional 150 feet of boom to protect shoreline near collection area.

**Staging Area Location and Capabilities/Amenities/Waste Management:** Staging on site

### Response Strategy Map (overview)



### Table of Response Resources

Type	Sub-Type	Size	Unit	QTY - Unit	Special Equipment or Comments
Boom	Swiftwater	6 in x 6 in	ft	1350	
Stakes				6	Use stakes/shore spikes to secure boom to the shoreline
Anchor	Danforth	25	lb	11	
Boat				2	Support vessel
Personnel				8	2 people on each boat, and 4 on the shore