

Latitude: 39.7502

Longitude: -121.9970

Highway Postmile: GLE 10.87

Railroad Milepost: N/A

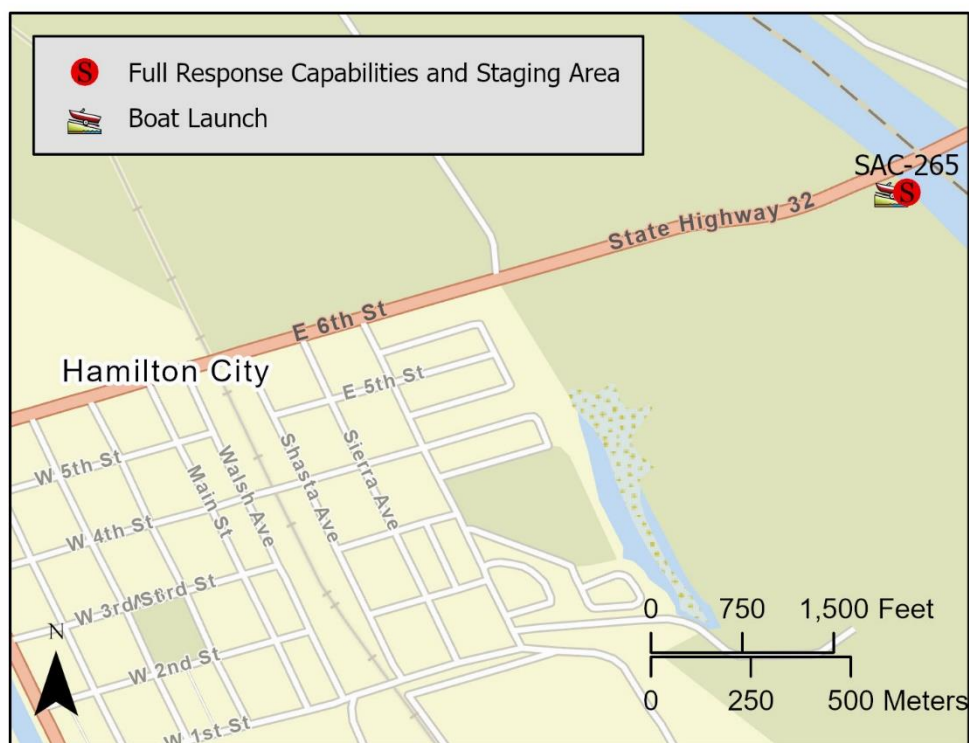
Nearest Address:Irvine Finch River Access Rd.,
Chico 95973

Thomas Guide #: 163/3B

Cell Service: Yes – Verizon
tested**Driving Directions**

From North: Use I-5 South, take Exit 621. Turn left onto 1-5 BUS, turn right to stay on I-5 BUS, left onto Road 9. Right onto 6 Avenue. Turn left onto CA-32E to Irvine Finch River Access Road.

From South: Use I-5 North, take Exit 619 for CA-32 toward Orland Chico. Right on CA-32. Right onto Irvine Finch Access Road.

Overview Street Map**Hazards, Restrictions and Advice for Responders**

- Trip and fall hazards, slippery when icy or wet
- Fast moving water at times of high flow
- Downed trees near shore
- Submerged objects

Resources-At-Risk**Ecological:** Bank Swallow, Steelhead – Central Valley DPS**Economic:** Fishing guide services**Tribal:** Contact the Native American Heritage Commission at (916) 373-3710.**Cultural and Historic:** Contact the Northeast Information Center at (530) 898-6256.

Site Description and Field Notes

River Width:
194.77 m (639 ft)

Gradient: Medium

Site Contact(s):
Bidwell-Sacramento
River St Park
(530) 342-5185

Site Location/Segment: SAC-GL-B-005

Dense riparian habitat along shoreline. Large parking area with facilities that could make for a good staging area. Part of the Bidwell-Sacramento River State Park.

Vehicular Access: Vehicle accessibility to the water's edge on the boat ramp

Recreational Use: Rafting, fishing

Boat Launches: Boat launch on site

ESI Shoreline Type: 9B – Vegetated low banks

Site Images



Upstream



Downstream



Straight Across

RR = River Right RL = River Left

Photo Date: 9/18/19

Site Objectives: Deflection/Collection

Implementation: Cascade from bridge using 4 – 400-foot lengths of boom and angle towards collection point at boat ramp. Use 300 feet of boom to line shoreline and collection area.

Staging Area Location and Capabilities/Amenities/Waste Management: Staging can be done at the parking area on site.

Response Strategy Map (overview)

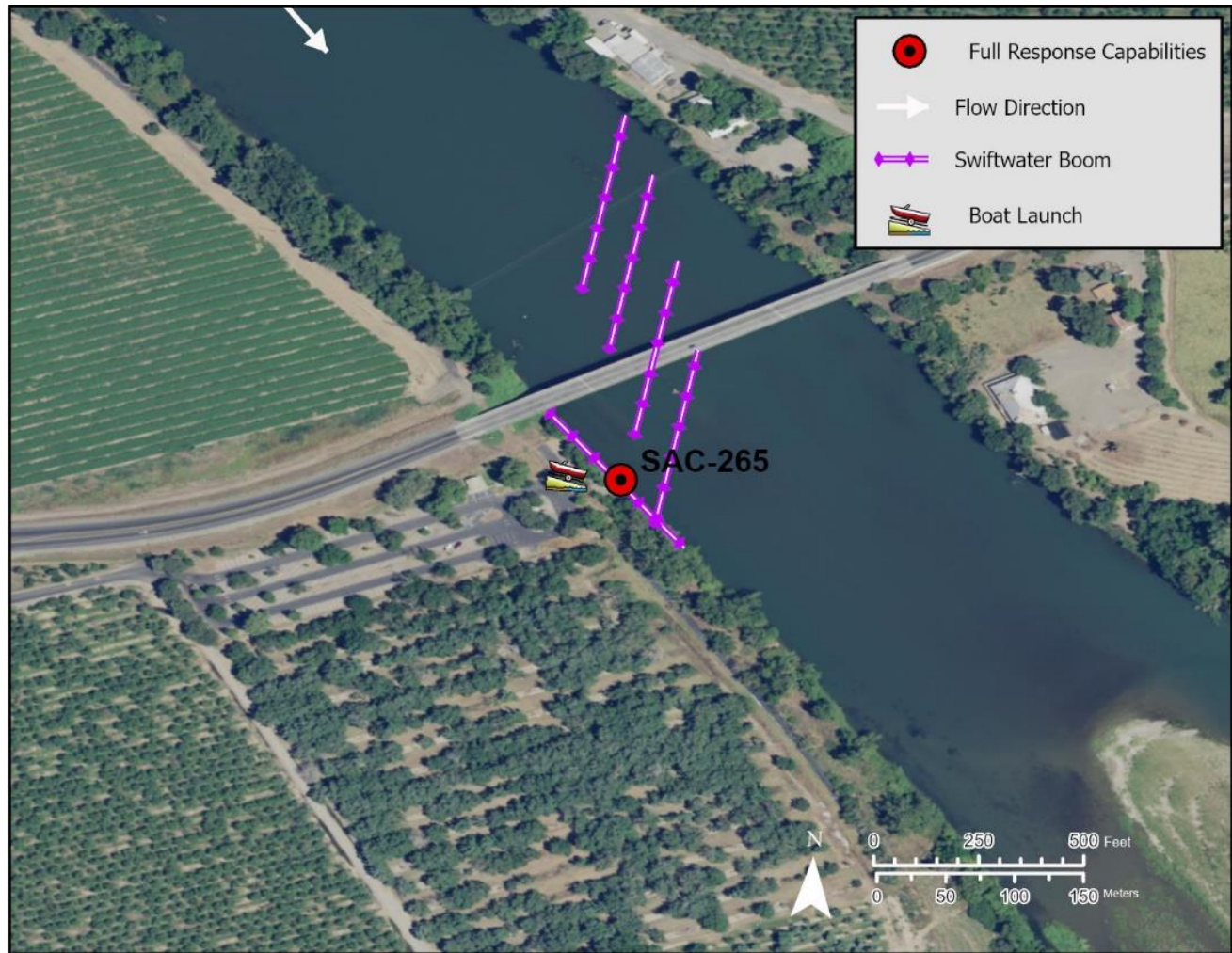


Table of Response Resources

Type	Sub-Type	Size	Unit	QTY - Unit	Special Equipment or Comments
Boom	Swift water	6 in x 6 in	feet	1900	
Anchor	Danforth	22	lb	19	
Boat	Response vessel	25	ft	2	Use response vessels
Personnel				8	2 people would be on each response vessel