

Latitude: 39.9097

Longitude: -122.0909

Highway Postmile: N/A

Railroad Milepost: N/A

Nearest Address and Thomas Guide #:

25340 South Avenue

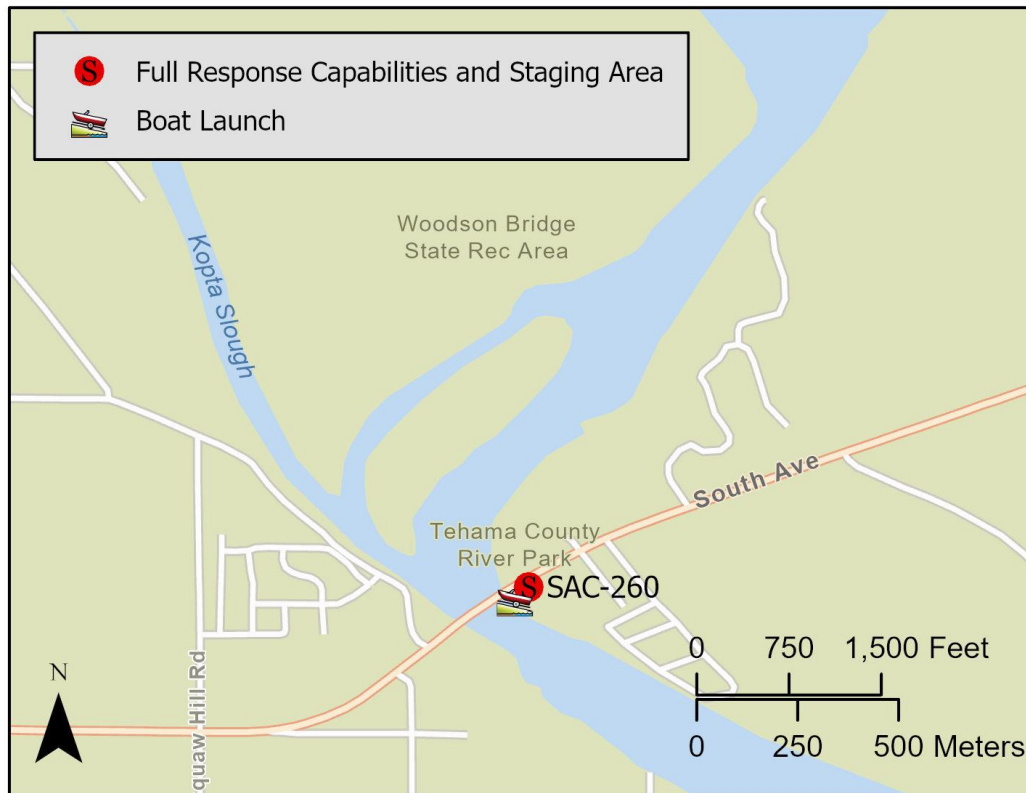
Corning, CA 96021

Cell Service: Yes – Verizon tested

Driving Directions

Take Exit 630 off I-5 onto South Avenue and head east. Continue east on South Avenue for 6 miles and turn south into Tehama County River Park. You can also enter this area from the north side of South Avenue by entering the Woodson Bridge State Recreation Area.

The boat launch is by the Sacramento River near the east side of the bridge.

Overview Street Map**Hazards, Restrictions and Advice for Responders**

- Response personnel need to be aware of swift currents and possible submerged objects in the river.
- High river flows can flood the parking area near the river.

Resources-At-Risk

Ecological: Bank Swallow, Swainson's Hawk, Western Yellow-billed Cuckoo, Western Red Bat, Chinook Salmon – Central Valley Spring-run ESU, Chinook Salmon – Sacramento River Winter-run ESU, Green Sturgeon, Steelhead – Central Valley DPS, Valley Elderberry Longhorn Beetle

Economic: Fishing guide services, campground and trailer park on-site, local tourism.

Tribal: Contact the Native American Heritage Commission at (916) 373-3710.

Cultural and Historic: Contact the Northeast Information Center at (530) 898-6256.

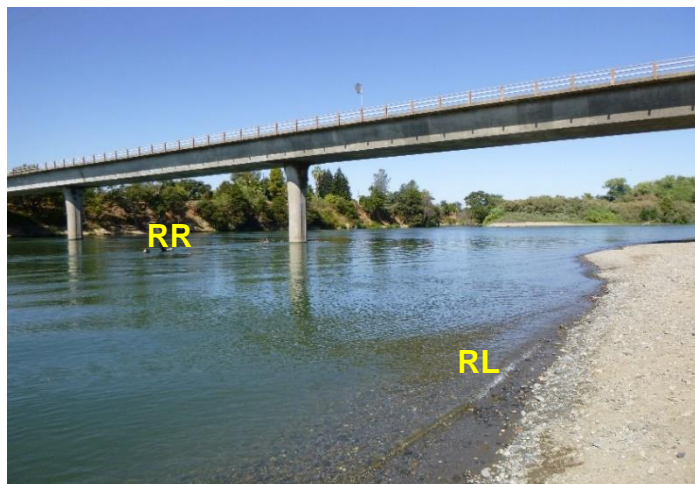
Site Description and Field Notes

River Width: 104 m (340 ft)**Gradient:** Medium**Site Contact(s):**Woodson Bridge State
Recreation Area
(530) 839-2112Tehama County Parks
(530) 528-1111**Site Location/Segment:** SAC-TE-C-020

Site is an oak woodland park with nature preserve. Camping and restrooms on site.

Vehicular Access: All vehicle types can access this location**Recreational Use:** Boating/rafting/kayaking, fishing, water contact, camping.**Boat Launches:** Boat launch is located on site**ESI Shoreline Type:** Exposed solid man-made structure (1B); Mixed sand and gravel bars with gently sloping banks (5); Vegetated low banks (9B).

Site Images



Upstream



Downstream



Straight Across

RR = River Right RL = River Left

Photo Date: 8/26/2019

Site Objectives: Deflection boom and product collection. Consider cascading boom strategy. Limit shoreline impacts.

Implementation: Starting from the river right shoreline above the boat launch and bridge, deploy 1,400 feet of cascading swift water boom toward the collection point at the boat launch. Add additional 300 feet of boom for shoreline protection near the collection area. Pump recovered product directly to vacuum truck on shore.

Staging Area Location and Capabilities/Amenities/Waste Management: Stage equipment and manage all wastes in the boat launch parking area.

Response Strategy Map (overview)

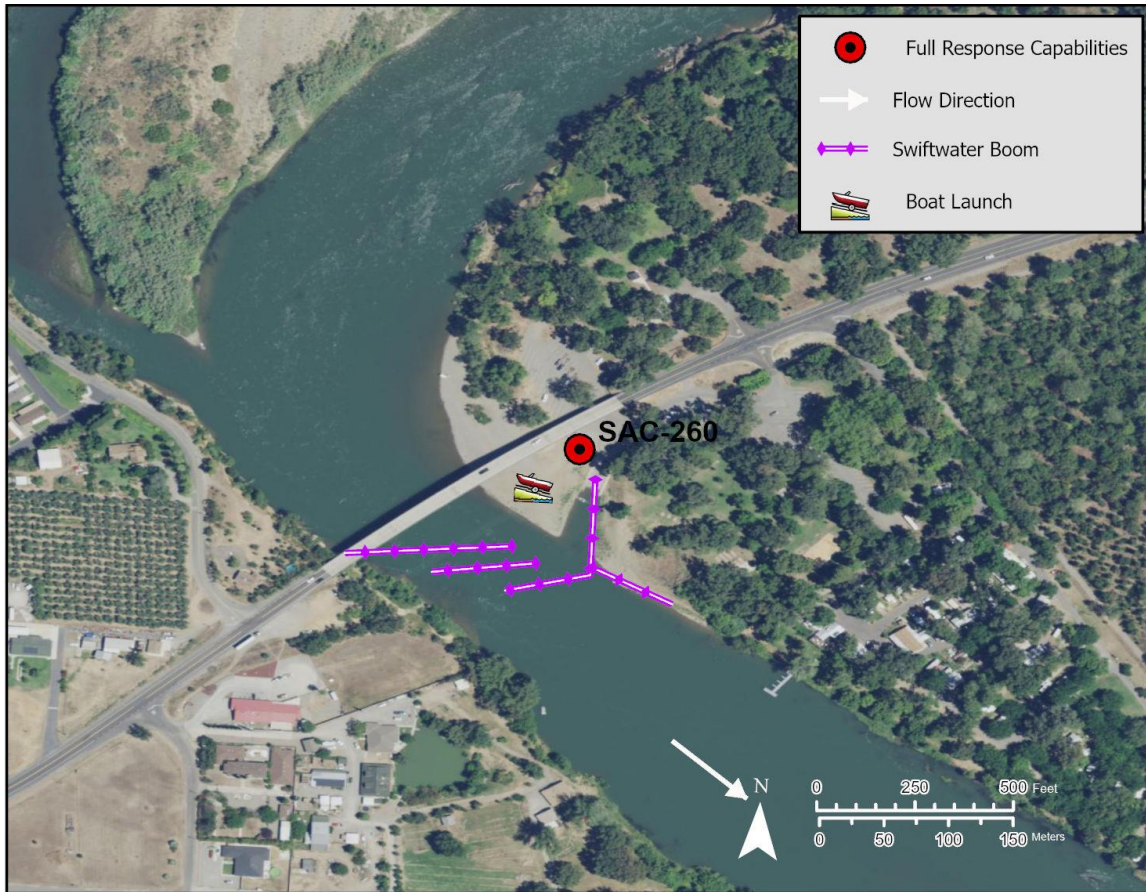


Table of Response Resources

Type	Sub-Type	Size	Unit	QTY - Unit	Special Equipment or Comments
Boom	Swift Water Boom	6 in x 6 in	ft	1,700	Includes 300 feet of boom for shoreline protection at collection point.
Anchors	Danforth	25	lb	17	
Boats	Response and Boom Vessel	25	ft	2	1 each, minimum.
Personnel				6 to 10 crew	2 vessel operators and 2 deckhands, minimum
Stakes				6	