

**Latitude:** 40.0319  
**Longitude:** -122.1172

### Driving Directions

**Highway Postmile:**  
N/A

**Railroad Milepost:**  
UPRR 210.90 – Valley Subdivision (located 0.20 miles downstream of boat launch)

Take the Gyle Road exit, Exit 636, off I-5 and head east. After 4.5 miles, Gyle Road bends to the north and turns into 5<sup>th</sup> Street. Continue north on 5<sup>th</sup> Street and turn right (east) at the stop sign at Tehama Avenue/C Street. Continue east on C Street and cross over the Sacramento River. On the east side of the Sacramento River, turn left (north) onto Mill Creek Park/Tehama Vina Road. Follow road under the railroad overcrossing and turn left into Mill Creek Park. Boat launch is located at the parking area near the river.

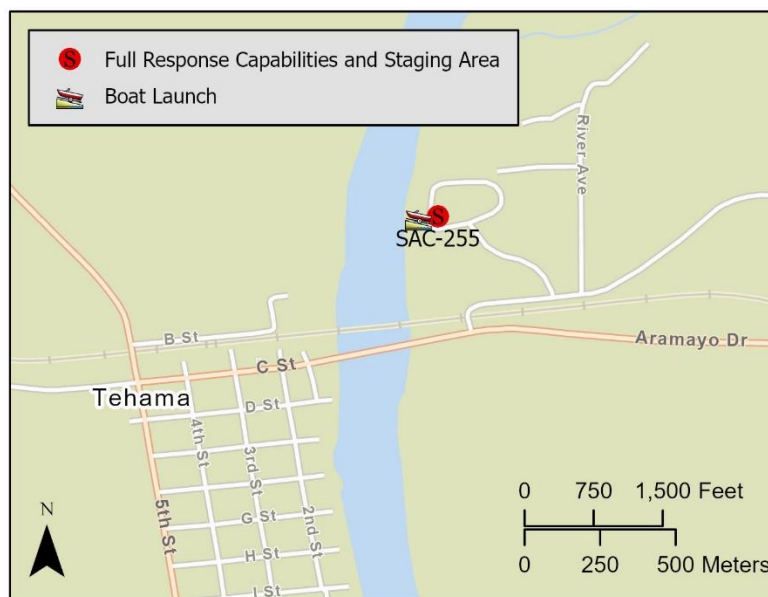
**Nearest Address:**  
24670 Tehama Vina Road  
Los Molinos, CA 96055

**NOTE:** THE RAILROAD OVERCROSSING OVER MILL CREEK PARK/TEHAMA VINA ROAD HAS 8.0 FEET OF CLEARANCE.

**Cell Service:**  
Yes – Verizon tested

If vehicles need additional clearance beyond 8.0 feet, then continue heading east on C Street (which turns into Aramayo Way on east side of river) until reaching the signal at Hwy 99. Turn north onto Hwy 99 and then turn left (west) onto Tehama Vina Road. Follow Tehama Vina Road west until reaching the entrance to Mill Creek Park.

### Overview Street Map



### Hazards, Restrictions and Advice for Responders

- Swift water and submerged objects in river.
- Be aware of the low 8.0 ft railroad overcrossing at west end of Tehama Vina Road.
- Park and boat launch are susceptible to flooding at high river flows in winter.

### Resources-At-Risk

**Ecological:** Bank Swallow, Least Bell's Vireo, Western Yellow-billed Cuckoo, Chinook Salmon – Central Valley Spring-run ESU, Chinook Salmon – Sacramento River Winter-run ESU, Green Sturgeon, Steelhead – Central Valley DPS, Western Pond Turtle, Valley Elderberry Longhorn Beetle

**Economic:** Fishing guide services

**Tribal:** Contact the Native American Heritage Commission at (916) 373-3710.

**Cultural and Historic:** Contact the Northeast Information Center at (530) 898-6256.

## Site Description and Field Notes

**River Width:** 175 m  
(575 ft)

**Gradient:** High

**Site Contact(s):**  
Tehama County  
Parks  
(530) 528-1111

**Site Location/Segment: SAC-TE-C-005**

County park with restrooms on site.

**Vehicular Access:** All vehicle types can access this location. Be aware of the low railroad overcrossing at west end of Tehama Vina Road.

**Recreational Use:** Fishing, boating, rafting, kayaking, water contact.

**Boat Launches:** Boat launch located on site.

**ESI Shoreline Type:** Exposed solid man-made structure (1B); Mixed sand and gravel bars and gently sloping banks (6A); Vegetated low banks (9B).

## Site Images



Upstream



Downstream



Straight Across

RR = River Right RL = River Left

Photo Date: 9/9/19

**Site Objectives:** Deflection boom and product collection. Consider cascading boom strategy. Limit shoreline impacts.

**Implementation:** Starting from the river right shoreline above the boat launch, deploy 2,400 feet of cascading swift water boom toward the collection point at the boat launch. Add additional 300 feet of boom for shoreline protection near the collection area. Pump recovered product directly to vacuum truck on shore.

**Staging Area Location and Capabilities/Amenities/Waste Management:** Stage equipment and managing wastes in the boat launch parking area.

### Response Strategy Map (overview)

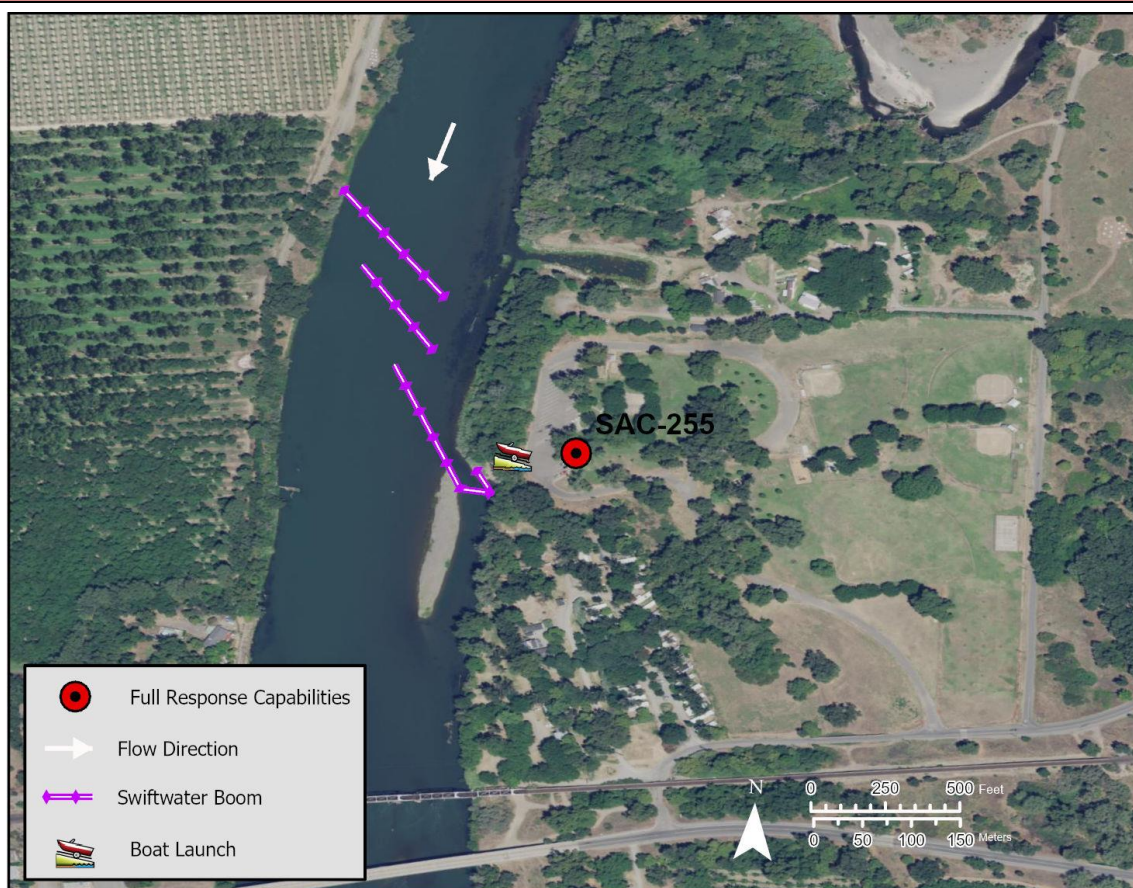


Table of Response Resources

Type	Sub-Type	Size	Unit	QTY - Unit	Special Equipment or Comments
Boom	Swift Water Boom	6 in x 6 in	ft	2,700 - feet	Includes 300 feet of boom for shoreline protection at collection point.
Anchors	Danforth	25	lb	27	
Stakes				6	
Boat	Response and Boom Vessel	25	ft	2	1 each, minimum.
Personnel				6 to 10 crew	2 vessel operators and 2 deckhands, minimum