

Latitude: 40.2631

Longitude: -122.2230

Highway Postmile: N/A

Railroad Milepost: N/A

Nearest Address and Thomas

Guide #: Bend Ferry Road

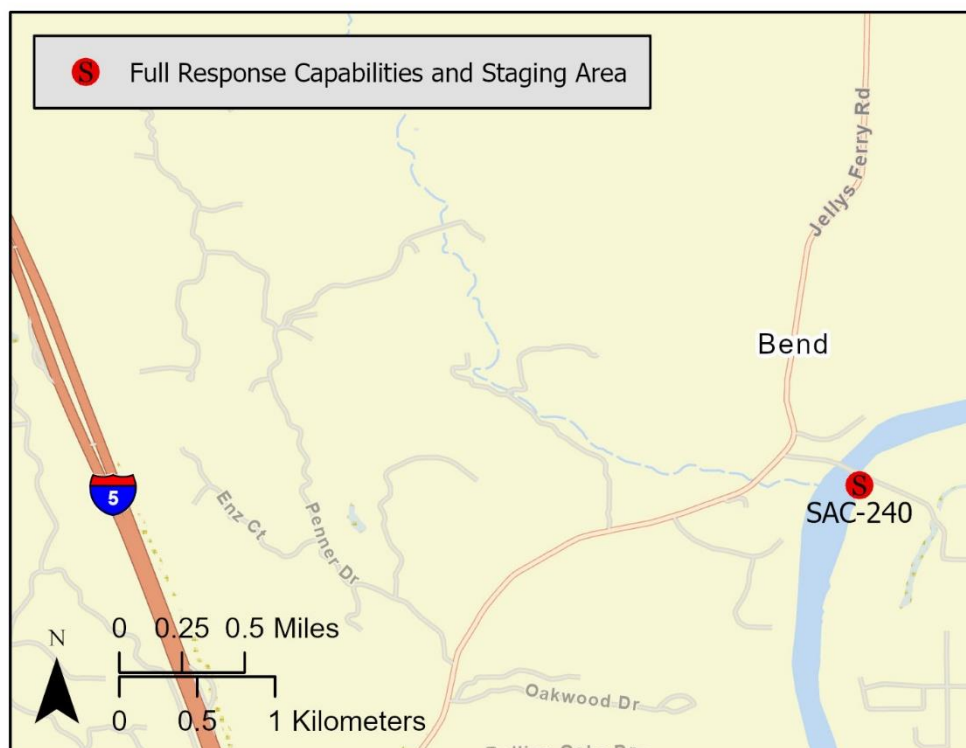
Red Bluff, CA 96080

Cell Service: Yes – Verizon tested

Driving Directions

From I-5, take the Jelly's Ferry Road exit, Exit 653. Turn onto Jelly's Ferry Road traveling northeast for 2.6 miles and turn right (east) onto Bend Ferry Road. Travel 0.4 miles and cross over the Sacramento River. Enter Bend Bridge Park and Boat Launch from the north side of Bend Ferry Road.

Overview Street Map



Hazards, Restrictions and Advice for Responders

- Responders should be aware of swift water and possible submerged objects in river.
- This is a county park with on-site restrooms.

Resources-At-Risk

Ecological: Bald Eagle, Least Bell's Vireo, Pallid Bat, Western Red Bat, Chinook Salmon – Central Valley Spring-run ESU, Chinook Salmon – Sacramento River Winter-run ESU, Steelhead – Central Valley DPS, Foothill Yellow-legged Frog, Ahart's Paronychia, Red Bluff Dwarf Rush, Slender Orcutt Grass

Economic: Fishing guide services, local tourism.

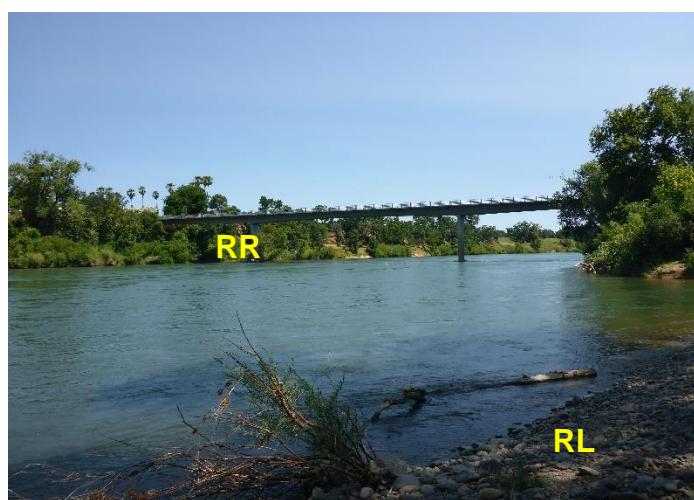
Tribal: Contact the Native American Heritage Commission at (916) 373-3710.

Cultural and Historic: Contact the Northeast Information Center at (530) 898-6256.

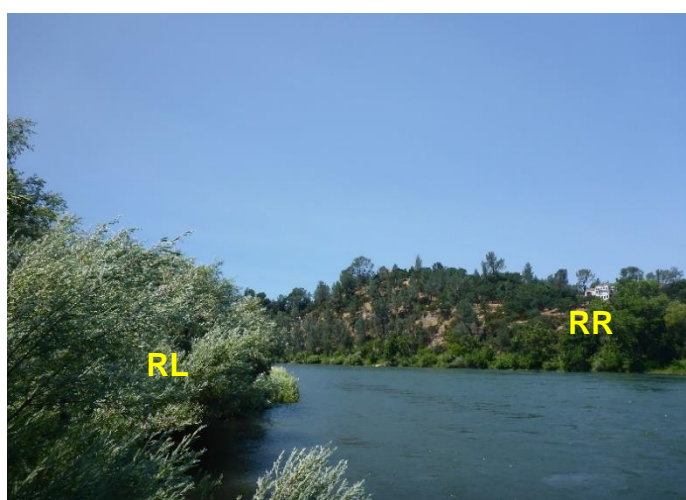
Site Description and Field Notes

River Width: 120 m (393 ft)	Site Location/Segment: SAC-TE-A-025
Gradient: Medium to high	Vehicular Access: All vehicle types can access this location.
Site Contact(s): Tehama County Parks (530) 528-1111	Recreational Use: Boating, rafting, kayaking, fishing, water contact. Boat Launches: Boat launch located on site.
	ESI Shoreline Type: Exposed solid man-made structure (1B); Mixed sand and gravel bars with gently sloping banks (5); Vegetated steeply sloping bluffs (8F), Vegetated low banks (9B).

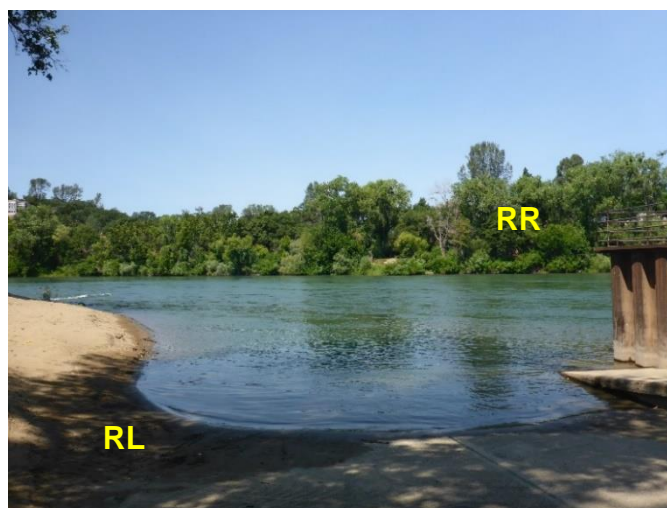
Site Images



Upstream



Downstream



Straight Across

RR = River Right RL = River Left

Photo Date: 6/20/19

Site Objectives: Deflection boom and product collection. Consider cascading boom set. Limit shoreline impacts.

Implementation: Starting from the river right shoreline above the Bend Ferry Bridge, deploy 1,800 feet of cascading swift water boom toward collection point at the boat launch. Add additional 200 feet of boom for shoreline protection near the collection area. Pump recovered product directly to vacuum truck on shore.

Staging Area Location and Capabilities/Amenities/Waste Management: Stage equipment and managing wastes in the county park parking area.

Response Strategy Map (overview)

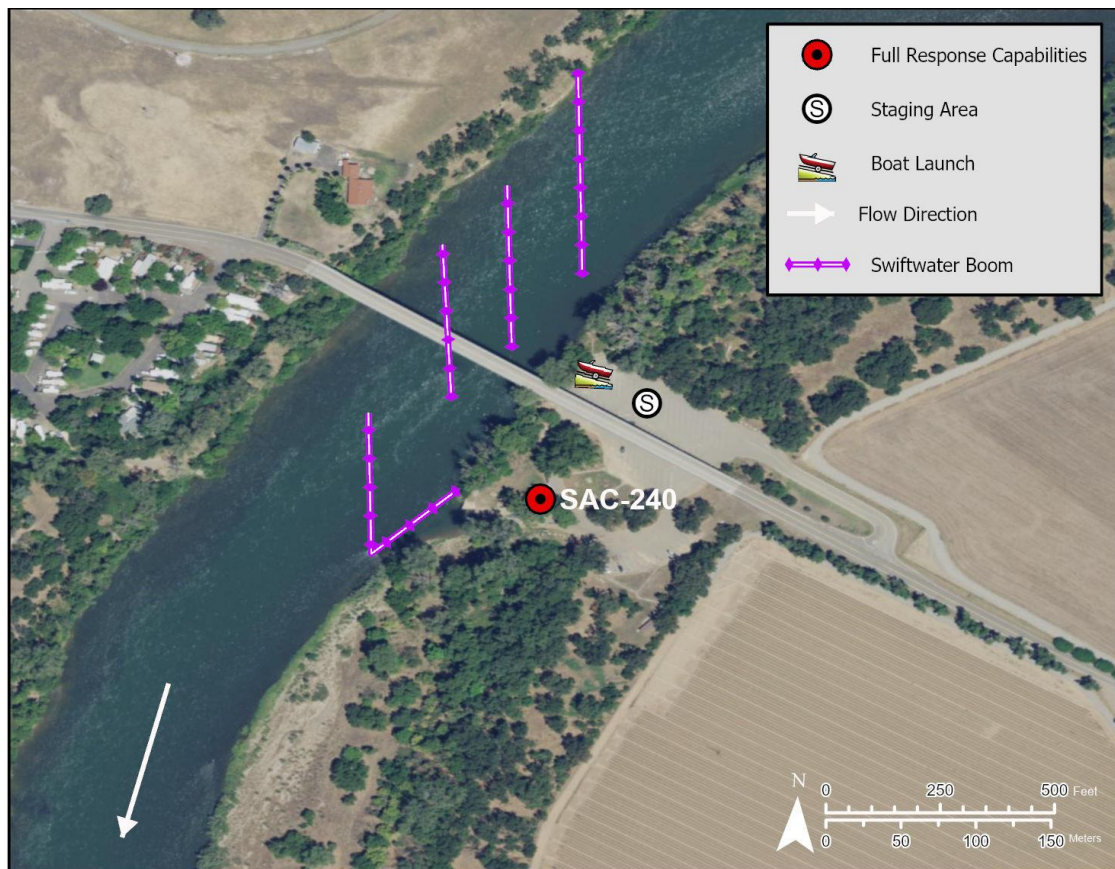


Table of Response Resources

Type	Sub-Type	Size	Unit	QTY - Unit	Special Equipment or Comments
Boom	Swift Water Boom	6 in x 6 in	ft	2,000	Includes 200 feet of boom for shoreline protection at collection point.
Anchors	Danforth	25	lb	20	
Stake				6	Used to secure boom to shore
Personnel				6 to 10 crew	2 vessel operators and 2 deckhands, minimum
Boat	Response and Boom Vessel	25	ft	2	1 each