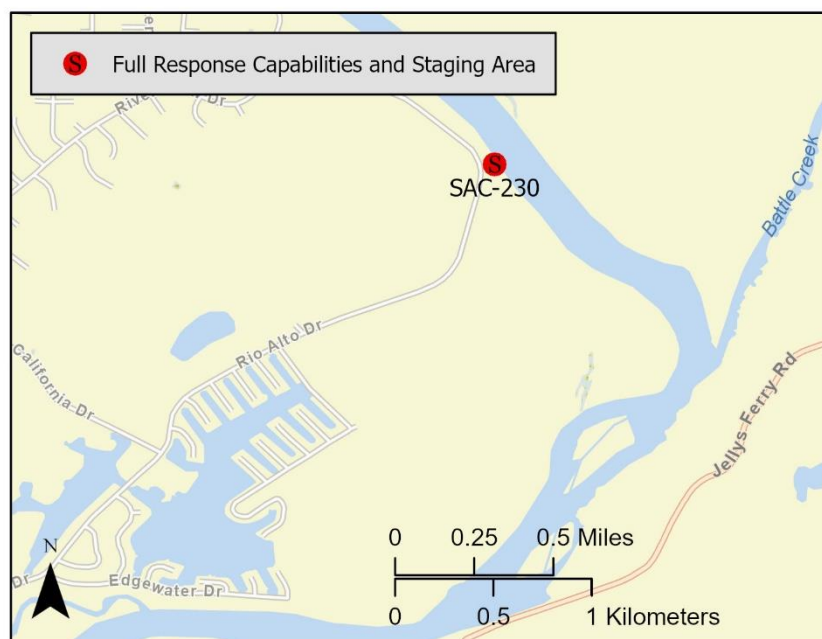


**Latitude:** 40.3638**Longitude:** -122.1855**Highway Postmile:** N/A**Railroad Milepost:** N/A**Nearest Address and Thomas Guide #:** 19999Lake California Drive  
Cottonwood, CA 96022**Cell Service:** Yes – Verizon tested**Driving Directions**

From North: Use I-5 South to Cottonwood, take the Bowman Road exit, Exit 662. Turn left onto Bowman Road, over the overpass, turn right onto Lake California Drive at the Park & Ride. Proceed 3.5 miles on Lake California Drive to the guard shack/entry gate for the Lake California community. Check in with security personnel at guard shack, then proceed 1.8 miles southeast on Lake California Drive to River View Drive. Turn left (east) onto River View Drive. Continue 2.0 miles southeast and turn left into Lake California Steelhead Landing boat launch.

From South: Use I-5 North to Cottonwood, take the Bowman Road exit, Exit 662. Continue straight ahead from the offramp and turn right onto Lake California Drive at the Park & Ride. Continue with directions above.

**Overview Street Map****Hazards, Restrictions and Advice for Responders**

- Lake California is a gated private community. Responders must check in with security at the guard shack before entering the community.
- Responders need to be aware of swift water conditions and possible submerged objects in the river.

**Resources-At-Risk**

**Ecological:** Bald Eagle, Bank Swallow, Least Bell's Vireo, Osprey, Townsend's Big-eared Bat, Chinook Salmon – Central Valley Spring-run ESU, Chinook Salmon – Sacramento River Winter-run ESU, Steelhead – Central Valley DPS, Foothill Yellow-legged Frog, Western Pond Turtle, Valley Elderberry Longhorn Beetle

**Economic:** Fishing, boating, recreation, tourism

**Tribal:** Contact the Native American Heritage Commission at (916) 373-3710.

**Cultural and Historic:** Contact the Northeast Information Center at (530) 898-6256.

## Site Description and Field Notes

River Width: 158 m (519 ft)

Site Location/Segment: SAC-TE-A-005

Gradient: Low

Vehicular Access: All vehicle types can access this location.

## Site Contact(s):

Lake California Gate – Guard  
Shack (24 hr): (530) 347-7903Recreational Use: Boating, fishing, rafting, kayaking, water  
contact.

Office: (530) 347-7900

Boat Launches: Boat launch is located on-site at Steelhead  
Landing.

ESI Shoreline Type: Vegetated low banks (9B), Riprap (6B)

## Site Images



Upstream



Downstream



Straight Across

RR = River Right RL = River Left

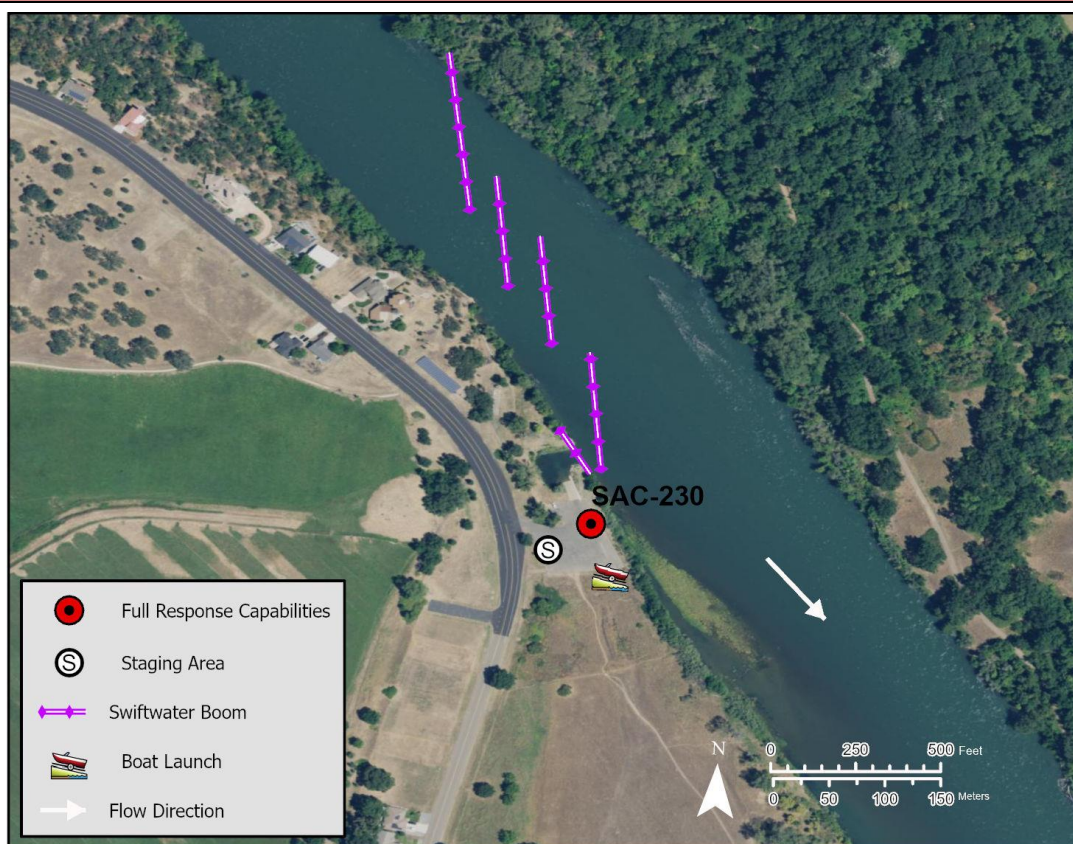
Photo Date: 6/20/2019

**Site Objectives:** Deflection boom and product collection. Consider cascading boom set. Limit shoreline impacts.

**Implementation:** Starting from the river-left shoreline, deploy 2,100 feet of cascading swift water boom toward the collection point at the boat launch. Add additional 200 feet of boom for shoreline protection near the collection area. Pump recovered product directly to vacuum truck on shore.

**Staging Area Location and Capabilities/Amenities/Waste Management:** Stage equipment and manage wastes in the boat launch parking area.

### Response Strategy Map (overview)



### Table of Response Resources

Type	Sub-Type	Size	Unit	QTY - Unit	Special Equipment or Comments
Boom	Swift Water Boom	6 in x 6 in	in	2,300 ft	Includes 200 feet of boom for shoreline protection at collection point.
Boat	Response and Boom Vessel	25	ft	2	1 each, minimum.
Personnel				6 to 10 crew	2 vessel operators and 2 deckhands, minimum
Anchors	Danforth	25	lb	23	
Stakes				6	