

Latitude: 40.4676**Longitude:** -122.2800**Highway Postmile:** N/A**Railroad Milepost:** N/A

Nearest Address and Thomas Guide #: Anderson River Park
2800 Rupert Road
Anderson, CA 96007

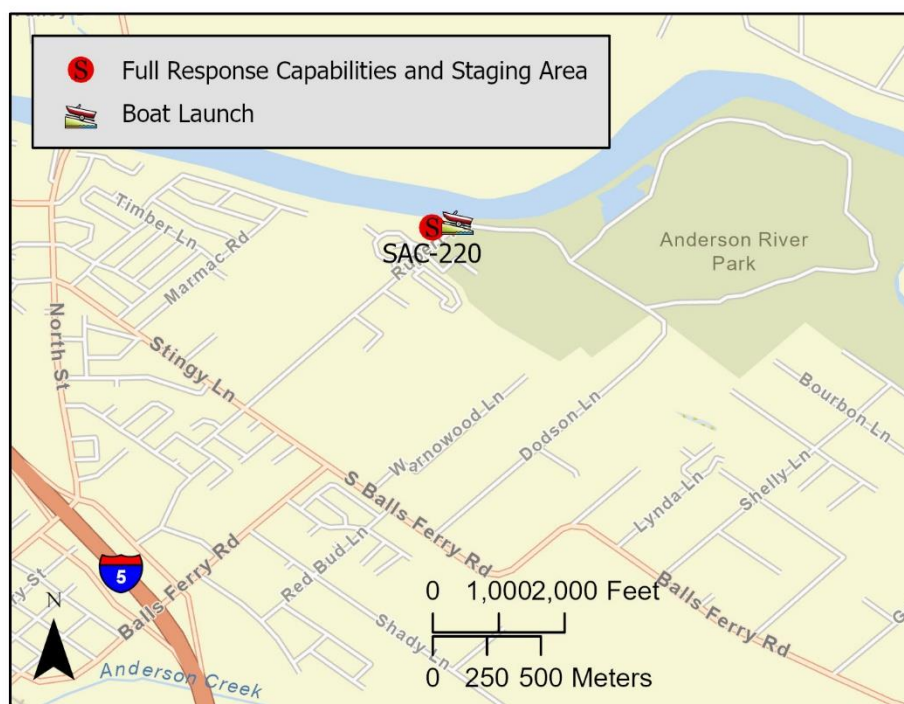
Cell Service: Yes – Verizon tested

Driving Directions

From North: Use I-5 South, take Exit 668 onto Balls Ferry Road and turn right (east). Continue east on Balls Ferry Road and stay in the left lane. At the stop sign, turn left (north) onto Stingy Lane. Continue north on Stingy Lane and turn right (east) onto Rupert Road. Continue east on Rupert Road and enter Anderson River Park. Boat launch is located on left side of Rupert Road near the Sacramento River.

From South: Use I-5 North, take Exit 668 and turn left (east) onto North Street. Continue east on North Street and turn right (south) onto Stingy Lane. Continue south on Stingy Lane and turn left (east) onto Rupert Road. Continue east on Rupert Road and enter Anderson River Park. Boat launch is located on left side of Rupert Road near the Sacramento River.

Overview Street Map



Hazards, Restrictions and Advice for Responders

- Sediment loading at boat ramp may impact vessel launching, shallow draft vessels recommended.
- Swift river currents may be present near boat launch.

Resources-At-Risk

Ecological: Bald Eagle, Bank Swallow, Chinook Salmon – Central Valley Spring-run ESU, Chinook Salmon – Sacramento River Winter-run ESU, Steelhead – Central Valley DPS, Valley Elderberry Longhorn Beetle

Economic: Anderson River Park operations, fishing guide services, local tourism.

Tribal: Contact the Native American Heritage Commission at (916) 373-3710.

Cultural and Historic: Contact the Northeast Information Center at (530) 898-6256.

Site Description and Field Notes

River Width: 146 m
(480 ft)

Gradient: Medium
to High

Site Contact(s):
City of Anderson

(530) 378-6626

Site Location/Segment: SAC-SH-E-005

Restrooms on site. Shoreline access is limited on both sides of the river in this area due to heavy vegetation.

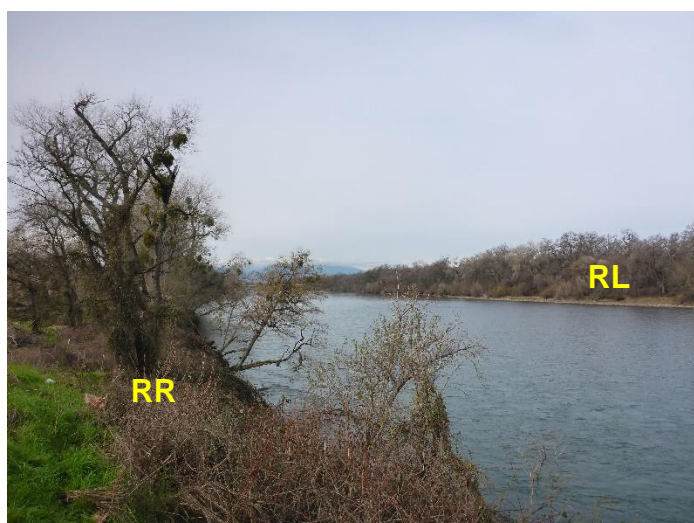
Vehicular Access: All vehicle types can access this location.

Recreational Use: City park, fishing, rafting/kayaking, water contact.

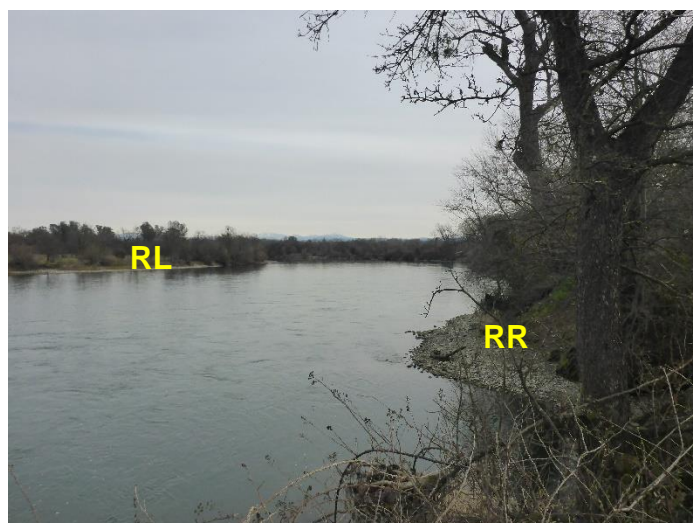
Boat Launches: Public fishing access and boat launch located on site.

ESI Shoreline Type: Gravel bars and gently sloping banks (6A); Vegetated low banks (9B).

Site Images



Upstream



Downstream



Straight Across

RR = River Right RL = River Left

Photo Date: 1/23/2019

Site Objectives: Deflection boom and product collection. Consider cascading boom set. Limit shoreline impacts.

Implementation: Attempt to deflect product to collection point in eddy at boat launch. Use as many kickers as necessary to deflect toward collection point. Deploy 2,500 feet of cascading swift water boom from river left shoreline to the boat launch on river right shoreline. Add additional 300 feet of boom for shoreline protection at the collection area. Pump recovered product directly to vacuum truck on shore.

Staging Area Location and Capabilities/Amenities/Waste Management: Stage equipment and manage wastes in parking lot near boat launch. Additional staging areas available in the park.

Response Strategy Map (overview)

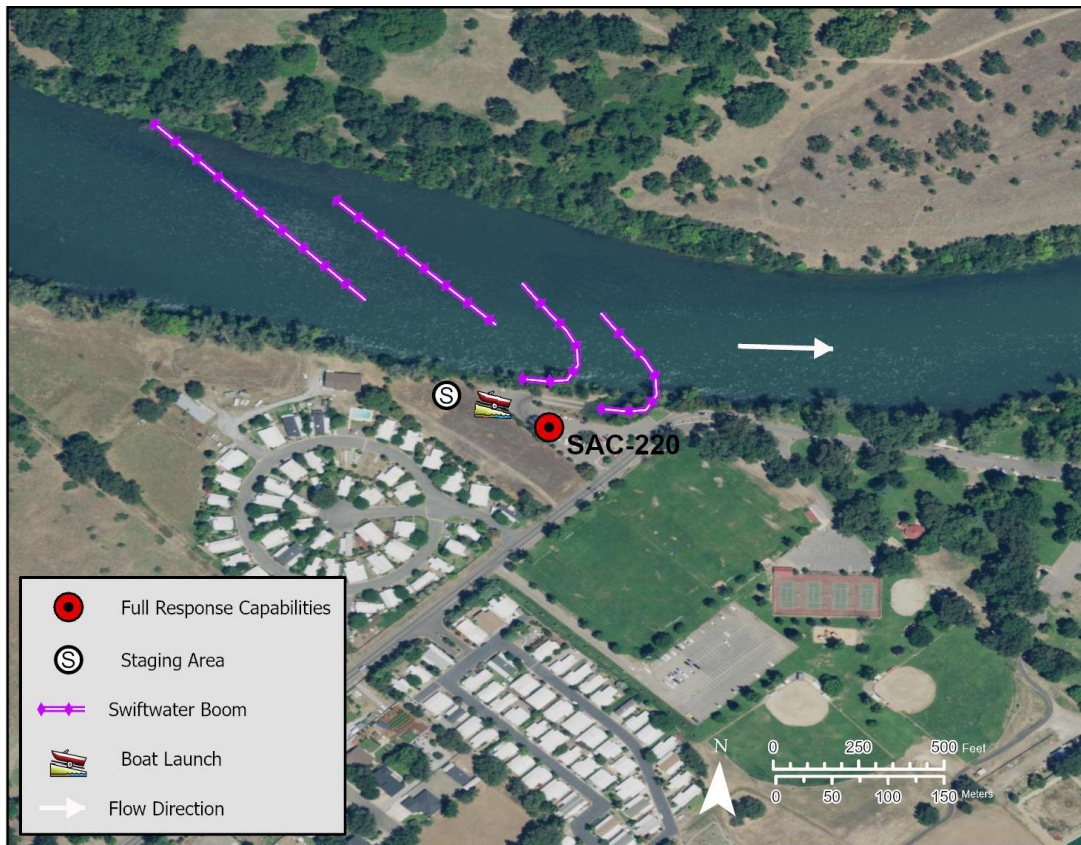


Table of Response Resources

Type	Sub-Type	Size	Unit	QTY - Unit	Special Equipment or Comments
Boom	Swift Water Boom	6 in x 6 in	in	2,800 ft	Includes 300 feet of boom for shoreline protection at collection point.
Boat	Response and Boom Vessel	25	ft	2	1 each, minimum.
Personnel				6 to 10 crew	2 vessel operators and 2 deckhands, minimum
Anchors	Danforth	25	lb	28	
Stakes				6	