

Latitude: 40.53747

Longitude: -122.35770

Highway Postmile: N/A

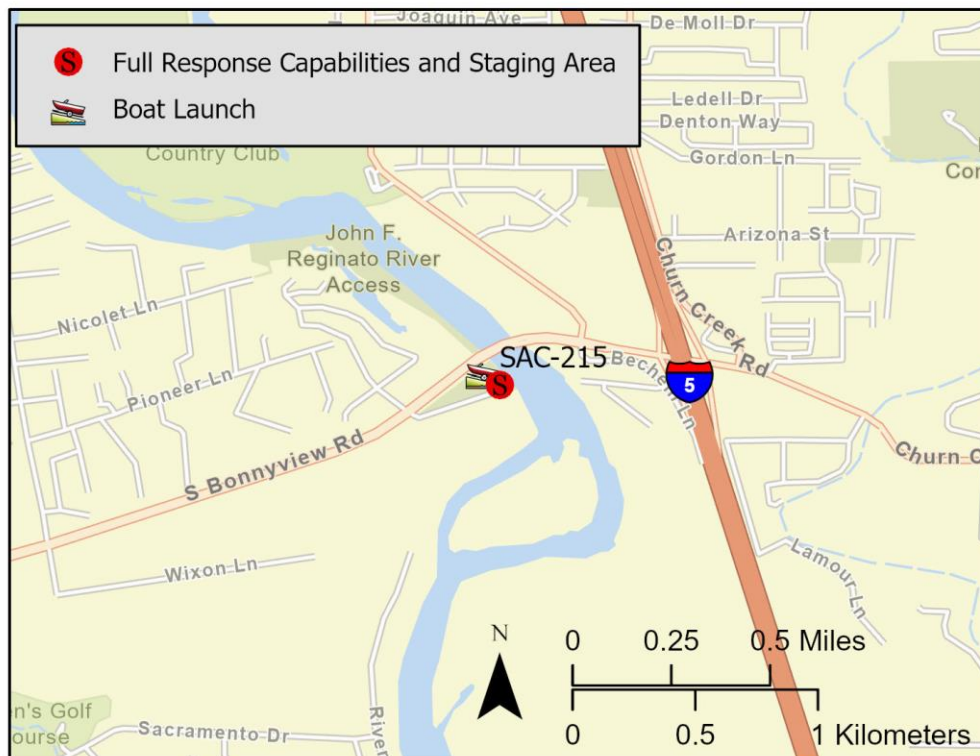
Railroad Milepost: N/A

Nearest Address and Thomas Guide #: 3951
South Bonneyview Road, Redding, CA 96001

Cell Service: Yes – Verizon tested

Driving Directions

From I-5, take Exit 675 and head west on South Bonneyview Road. Cross over the Sacramento River and turn left (south) into the parking lot for the South Bonneyview Boat Launch and John Reginato River Access.

Overview Street Map**Hazards, Restrictions and Advice for Responders**

- River currents can be swift in the vicinity of the boat launch.
- Water intake pumps located on the river left shoreline across from the boat launch will need at least 200 feet of exclusion/deflection boom deployed for protection.
- Site elevation is 468 feet msl.
- A trail exists along the river-right shoreline above and below the boat launch.

Resources-At-Risk

Ecological: Bald Eagle, Bank Swallow, Chinook Salmon – Central Valley Spring-run ESU, Chinook Salmon – Sacramento River Winter-run ESU, Steelhead – Central Valley DPS

Economic: Fishing guide services, local tourism.

Tribal: Contact the Native American Heritage Commission at (916) 373-3710.

Cultural and Historic: Contact the Northeast Information Center at (530) 898-6256.

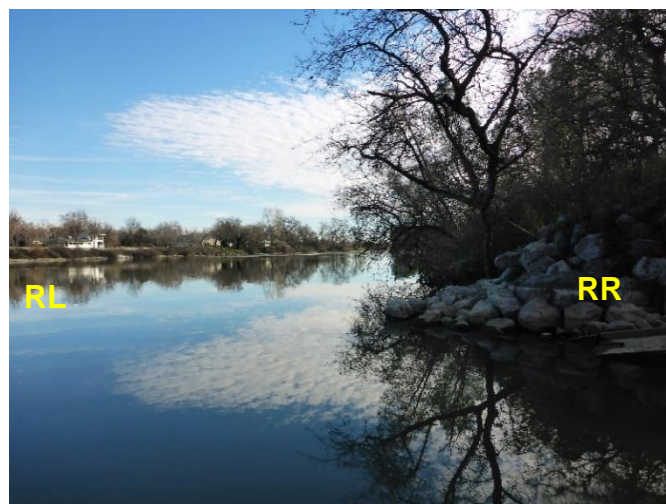
Site Description and Field Notes

River Width: 125 m (410 ft)	Site Location/Segment: SAC-SH-D-030 Restrooms located on site. Facility closes between 2200 hours and 0500 hours each evening. Nearby lodging and food located off South Bonneyview Road on east side of Sacramento River. Vehicular Access: All vehicle types can access this location. Recreational Use: Fishing, rafting/kayaking, water contact. Boat Launches: South Bonneyview Boat Launch located on site. ESI Shoreline Type: Gravel bars and gently sloping banks (6A); Rip rap (6B); Vegetated, steeply sloping bluffs (8F); Vegetated low banks (9B).
Gradient: Medium	
Site Contact(s): City of Redding Parks & Recreation Business Hours: (530) 224-6100 After Hours: (530) 245-2073	

Site Images



Upstream



Downstream



Straight Across

RR = River Right RL = River Left

Photo Date: 1/23/2019

Site Objectives: Deflection boom and product collection. Consider cascading boom set. Limit shoreline impacts. Protect water intake pumps across from boat launch.

Implementation: Deploy 2,000 feet of cascading swift water boom from the river left shoreline above bridge to the boat launch on the river right shoreline. Add additional 200 feet of boom for shoreline protection at the collection area. Additionally, deploy 200 feet of exclusion/deflection boom around water pump intakes across from boat launch. Pump recovered product directly to vacuum truck on shore.

Staging Area Location and Capabilities/Amenities/Waste Management: Stage equipment and manage wastes in parking lot and open space near boat launch.

Response Strategy Map (overview)

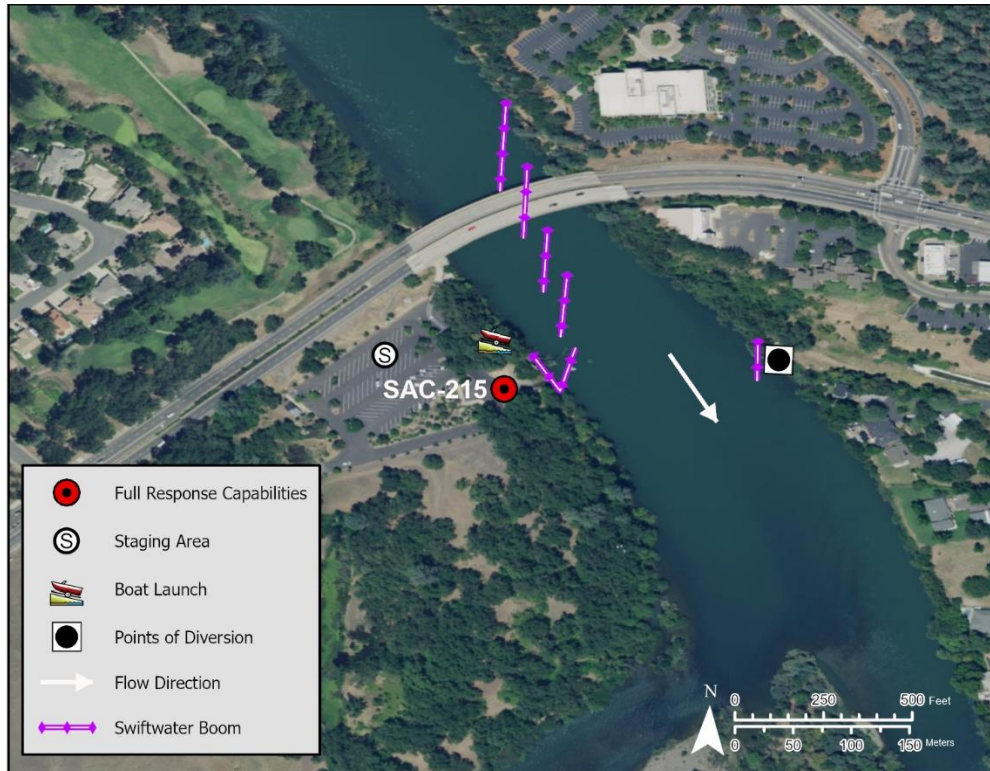


Table of Response Resources

Type	Sub-Type	Size	Unit	QTY - Unit	Special Equipment or Comments
Boom	Swift Water Boom	6 in x 6 in	ft	2,400	Includes 200 feet of boom for shoreline protection and 200 feet of exclusion/deflection boom for water pump intakes.
Anchor	Danforth	25	lb	24	
Boat	Response and Boom Vessel	25	ft	2	1 each, minimum.
Personnel				8	2 vessel operators and 2 deckhands, minimum
Stakes				6	