



Latitude: 35.27327
Longitude: -119.30626

Driving Directions

Highway Postmile: N/A

Railroad Milepost: N/A

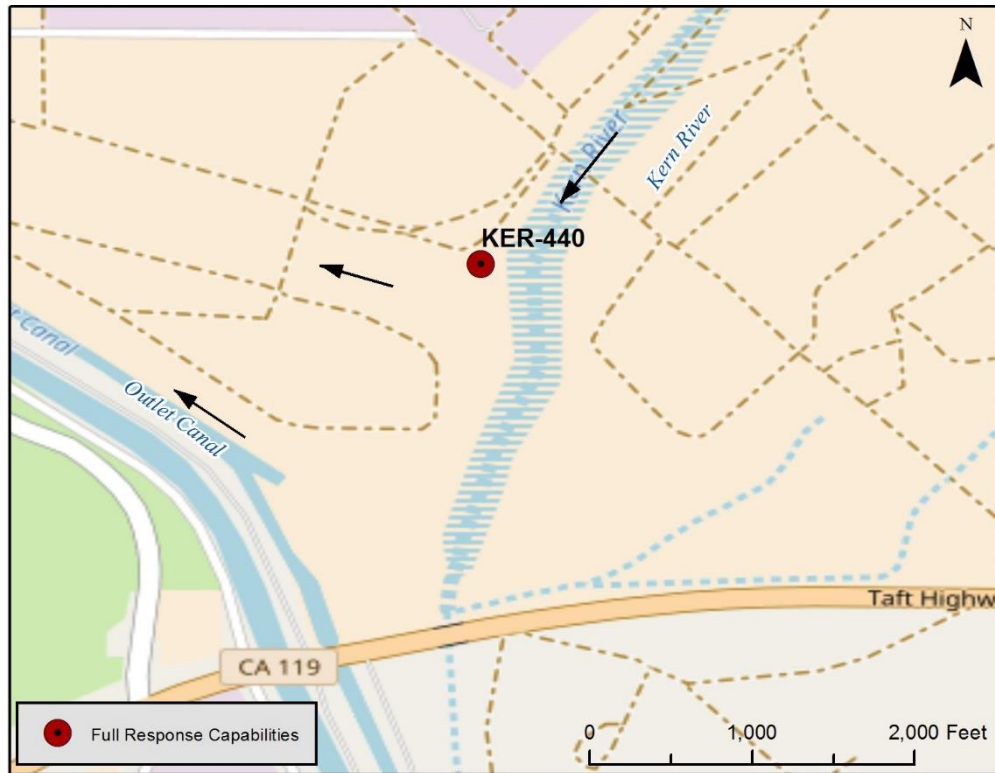
Nearest Address and Thomas Guide #:
 25761 Highway 119
 Tupman, CA 93276

Cell Service: Yes, Verizon

From the East: From Bakersfield, take Highway 119 west towards Taft. Turn right onto Tupman Road. In approximately 9/10ths of a mile, turn right onto Arco Road to access the South Coles Levee Compressor plant. Call CRC dispatch prior to entering gas plant (661) 763-6363. Continue on Arco Road and take a right at the "T" to access river's edge (river right). At the edge of the river, turn right on the dirt road and access location will be 1/10 mile south.

From Interstate 5: Exit CA-43 South (Exit 246) and continue to Highway 119. Turn right onto Highway 119 towards Taft. In approximately 3.3 miles, turn right onto Tupman Road. In approximately 9/10ths of a mile, turn right onto Arco Road to access the South Coles Levee Compressor plant. Call CRC dispatch prior to entering gas plant (661) 763-6363. Continue on Arco Road and take a right at the "T" to access river's edge (river right). At the edge of the river, turn right on the dirt road and access location will be 1/10 mile south.

Overview Street Map



Hazards, Restrictions and Advice for Responders

- Swift water during winter and spring flows
- Private property (gas compressor plant), call CRC dispatch prior to entering gas plant (661) 763-6363
- Watch for propane trucks while accessing compressor plant, speed limit is 5 mph
- Flame resistant clothing and hard hats may be required
- Biological hazards (e.g., wildlife including rattlesnakes)
- San Joaquin Valley Railroad rail crossing approximately 8 miles upstream from site
- Multiple pipeline crossings

Resources-At-Risk

Ecological: Western Pond Turtle, Blunt-nosed Leopard Lizard, California Glossy Snake, Bakersfield Legless Lizard, San Joaquin Coachwhip, San Joaquin kit fox, American badger, Tipton kangaroo rat, Buena Vista Lake ornate shrew, San Joaquin antelope squirrel, Tulare grasshopper mouse, Tricolored Blackbird, Loggerhead Shrike, LeConte's Thrasher, Burrowing Owl, Swainson's Hawk, Horn's milk-vetch, Kern mallow, recurved larkspur, San Joaquin woollythreads, Bakersfield cactus. Riparian habitat supports sensitive plant and animal communities including migratory birds and raptors.

Economic: Multiple water intakes downstream, inlet to California Aqueduct approximately 500 feet downstream.

Tribal: Contact the Native American Heritage Commission at (916) 373-3710.

Cultural and Historic: Contact the Southern San Joaquin Valley Information Center Information Center at (661) 654-2289.



Site Description and Field Notes

River Width:
165 meters (542 feet)

Gradient: Low

Site Contact/s:

CRC Dispatch
661-763-6363

City of Bakersfield Water
Resources (661) 326-3716

Site Location/Segment: KER-KN-L-025

This site is located just south of the South Coles Levee Compressor plant, which is operated by California Resources Corporation. This area is part of the Coles Levee Ecological Preserve. Propane trucks are frequently entering and exiting the road. Multiple water intakes are 500 feet downstream. Access to river left is over a narrow bridge crossing just upstream from the site. Water flow at this location can vary seasonally from high to no flow.

Vehicular Access: Passenger vehicles, small trucks, vacuum trucks, trailers

Recreational Use: N/A

Boat Launches: Direct river access, shallow boat launch for small skiff (river left or river right)

ESI Shoreline Type: 9B Vegetated low banks

Site Images



Upstream



Downstream



Straight Across

RR = River Right RL = River Left

Photo Date: 06/09/2017



Site Objectives: Deploy boom and allow for oil collection on river right.

Implementation: Deploy between 100 - 700 ft. of containment boom (based on site conditions since width of water in river varies) upstream at an angle to prevent entrainment, utilizing anchoring stakes. Oil collection will be on river right along river's edge.

Staging Area Location and Capabilities/Amenities/Waste Management: Limited staging on river right. A small vacuum truck and small trucks could use the space, but it is limited. Larger staging location would need to be closer to the gas plant at an equipment staging lot. Restrooms and electricity onsite at the plant office.

Response Strategy Map (overview)

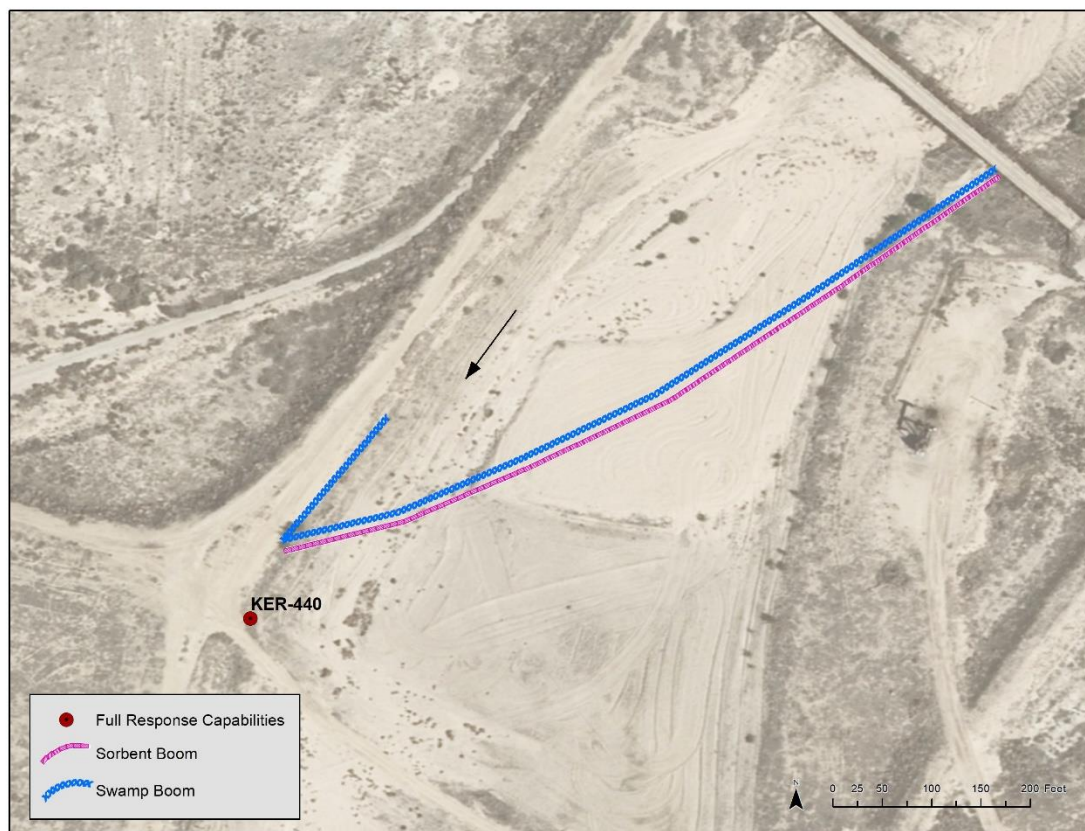


Table of Response Resources

Type	Sub-Type	Size	Unit	QTY - Unit	Special Equipment or Comments
Boom	Swamp	12	Inch	700 ft.	Booming strategy only effective during medium to low flow
Boom	Sorbent	5 or 8	Inch	700 ft.	5 inches for light oiling, 8 inches for heavier oiling
Stakes	Anchoring			6	6 stakes per boom, 3 on either end. Any boom with a "J" in its shape would require an additional stake. Recommend angled iron beams.
Anchors	Danforth	40	lb	1-2	Midstream anchoring.
Skimmer	Drum				Number will vary depending on response.
Boat	Small Skiff			1	Only necessary if river currents and water levels are optimal for launching a skiff to deploy boom.
Personnel				8	4 boat crew and 4 shoreside personnel.