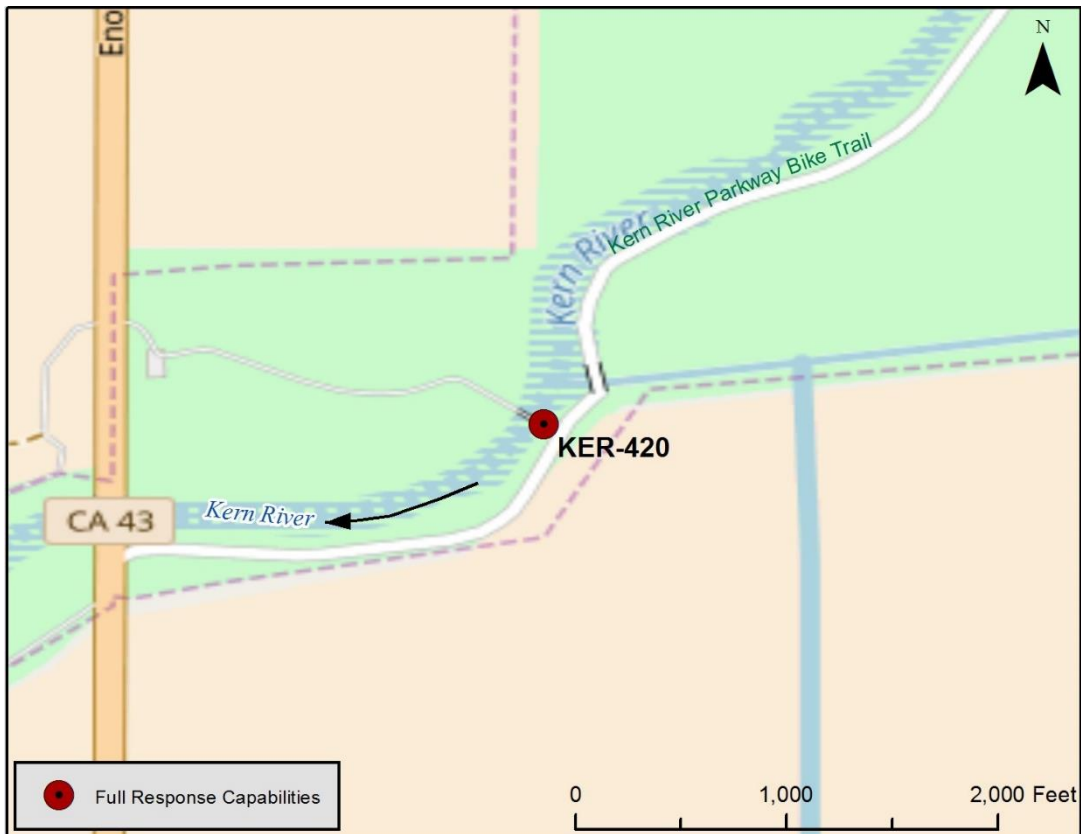


Latitude: 35.30479**Longitude:** -119.24684**Highway Postmile:** N/A**Railroad Milepost:** N/A**Nearest Address and Thomas Guide #:**13500 Raceway Blvd Interstate 5 and
Enos Lane, Bakersfield, CA 93311**Cell Service:** Yes, Verizon**Driving Directions**

From the East: From Bakersfield, take Stockdale Highway west to Highway 43. Turn left on Highway 43 (Enos Lane) for approximately 3.3 miles. Turn left into the Kern River Parkway Bike Path parking lot. Enter the parking lot and follow the bike path east to Diversion Weir gate. Cross over gate and access river left.

From Interstate 5: Exit CA-43 and turn north. Continue approximately 1 mile to the Kern River Parkway Bike Path parking lot on the right side of the highway. Enter the parking lot and follow the bike path east to Diversion Weir gate. Cross over gate and access river left.

Overview Street Map**Hazards, Restrictions and Advice for Responders**

- Swift water during winter and spring flows
- Private property with locked gate, must contact Kern Water Bank (661) 440-4668
- Watch for bicycles and foot traffic, speed limit is 5 mph on bike path, heavy public use
- Biological hazards (e.g., wildlife including rattlesnakes)
- Canal intake gates
- San Joaquin Valley Railroad rail crossing approximately 2.8 miles upstream from site

Resources-At-Risk

Ecological: Western Pond Turtle, Blunt-nosed Leopard Lizard, California Glossy Snake, Bakersfield Legless Lizard, San Joaquin Coachwhip, San Joaquin kit fox, American badger, Tipton kangaroo rat, Buena Vista Lake ornate shrew, San Joaquin antelope squirrel, Tulare grasshopper mouse, Tricolored Blackbird, Loggerhead Shrike, LeConte's Thrasher, Burrowing Owl, Swainson's Hawk, Horn's milk-vetch, Kern mallow, recurved larkspur, San Joaquin woollythreads, Bakersfield cactus. Riparian habitat supports sensitive plant and animal communities including migratory birds and raptors.

Economic: Water intakes for Kern Water Bank Canal, Diversion Weir across river, water outlet from Kern River Canal.

Tribal: Contact the Native American Heritage Commission at (916) 373-3710.

Cultural and Historic: Contact the Southern San Joaquin Valley Information Center Information Center at (661) 654-2289.

Site Description and Field Notes

River Width: 86 meters (282 feet)	Site Location/Segment: KER-KN-K-030 This site is located just east of the Kern River Parkway Bike Path parking lot. Access is through the parking lot and onto the bike path. River left and river right can be accessed on this bike path. Multiple water inlets are present. Space is limited and driving the bike path would be limited to one-direction travel. Dirt access roads are present for vehicle parking and staging. Water flow at this location can vary seasonally from high to no flow. Vehicular Access: Passenger vehicles, small trucks, small trailers, small vacuum truck Recreational Use: Human contact, bike path runs adjacent to the river (river left and river right) Boat Launches: Direct river access, small skiff on river left or river right ESI Shoreline Type: 1B Exposed, solid man-made structures; 9B Vegetated low banks
Gradient: Low	
Site Contact/s: Kern Water Bank: Nick Torres (661) 440-4668 City of Bakersfield Water Resources (661) 326-3716 Buena Vista WSD: Andrew Bell (661) 204-1379	

Site Images



Upstream



Downstream



Straight Across

RR = River Right RL = River Left

Photo Date: 07/07/2017

Site Objectives: Deflect oil and protect water intakes from oiling. Deploy boom and allow for oil collection on river left.

Implementation: Boom A: Deploy 350 ft. of containment boom upstream of the Kern Water Bank Canal gate at an angle to prevent entrainment, utilizing anchoring stakes. Oil collection will be on river left along river's edge. Boom B: Deploy 250 ft. of containment boom in front of the Kern River Weir to protect water intake. Boom C: Deploy 100 ft. of containment boom across Kern River Terminus to protect gate.

Staging Area Location and Capabilities/Amenities/Waste Management: Limited staging on river left. A small vacuum truck and small trucks could use the space, but it is limited. Larger staging location is at the Kern River Parkway Bike Path parking lot. No restrooms or electricity onsite.

Response Strategy Map (overview)

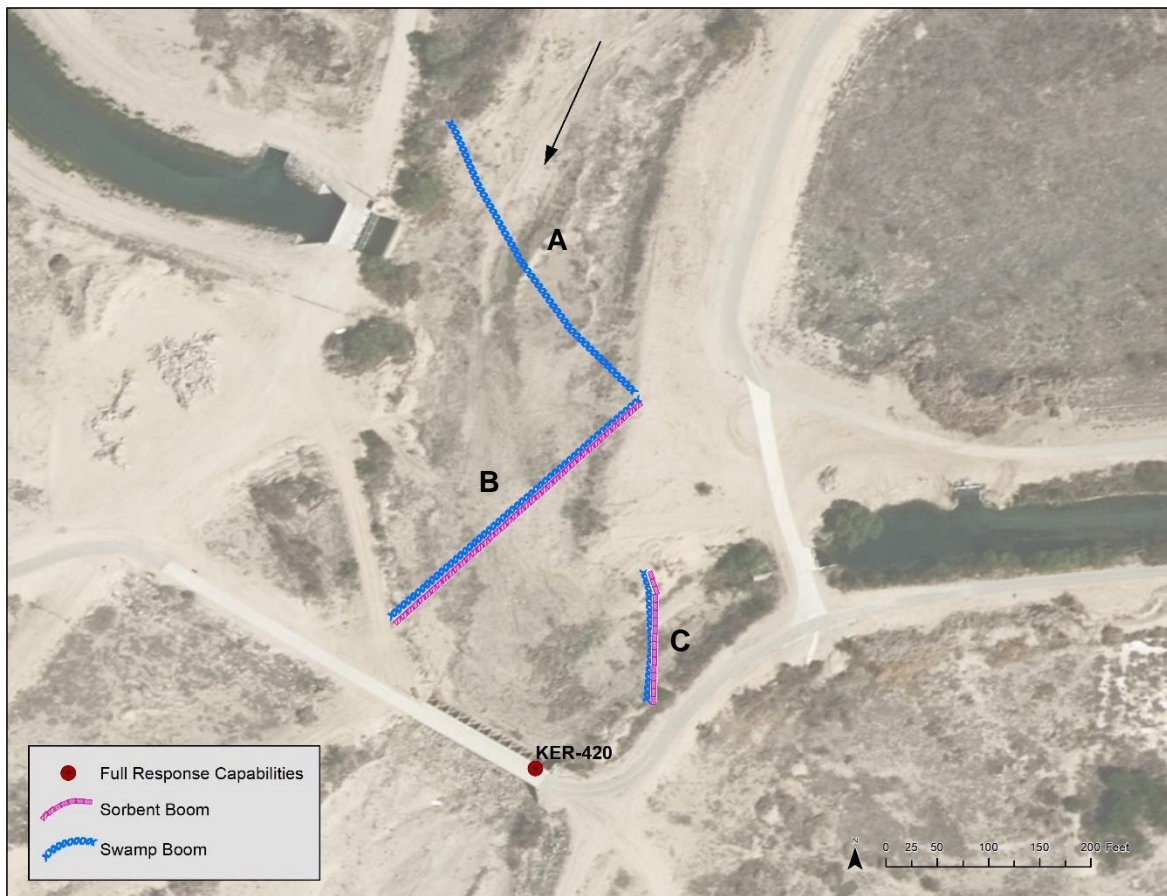


Table of Response Resources

Type	Sub-Type	Size	Unit	QTY - Unit	Special Equipment or Comments
Boom	Swamp	12	inch	700 ft.	Booming strategy only effective during medium to low flow. Boom A = 350-feet, Boom B = 250-feet, Boom C = 100-feet
Boom	Sorbent	5 or 8	inch	350 ft.	5 inches for light oiling, 8 inches for heavier oiling. Boom B = 250-feet, Boom C = 100-feet
Stakes	Anchoring			18	6 stakes per boom, 3 on either end. Any boom with a "J" in its shape would require an additional stake. Recommend angled iron beams.
Anchors	Danforth	40	lb	2	Midstream anchoring for Boom A and Boom B.
Skimmer	Drum				Number will vary depending on response.
Boat	Small Skiff			1	Only necessary if river currents and water levels are optimal for launching a skiff to deploy boom.
Personnel				8	4 boat crew and 4 shoreside personnel.