

Latitude: 35.34583
Longitude: -119.14590

Driving Directions

Highway Post Mile: N/A

Railroad Milepost: N/A

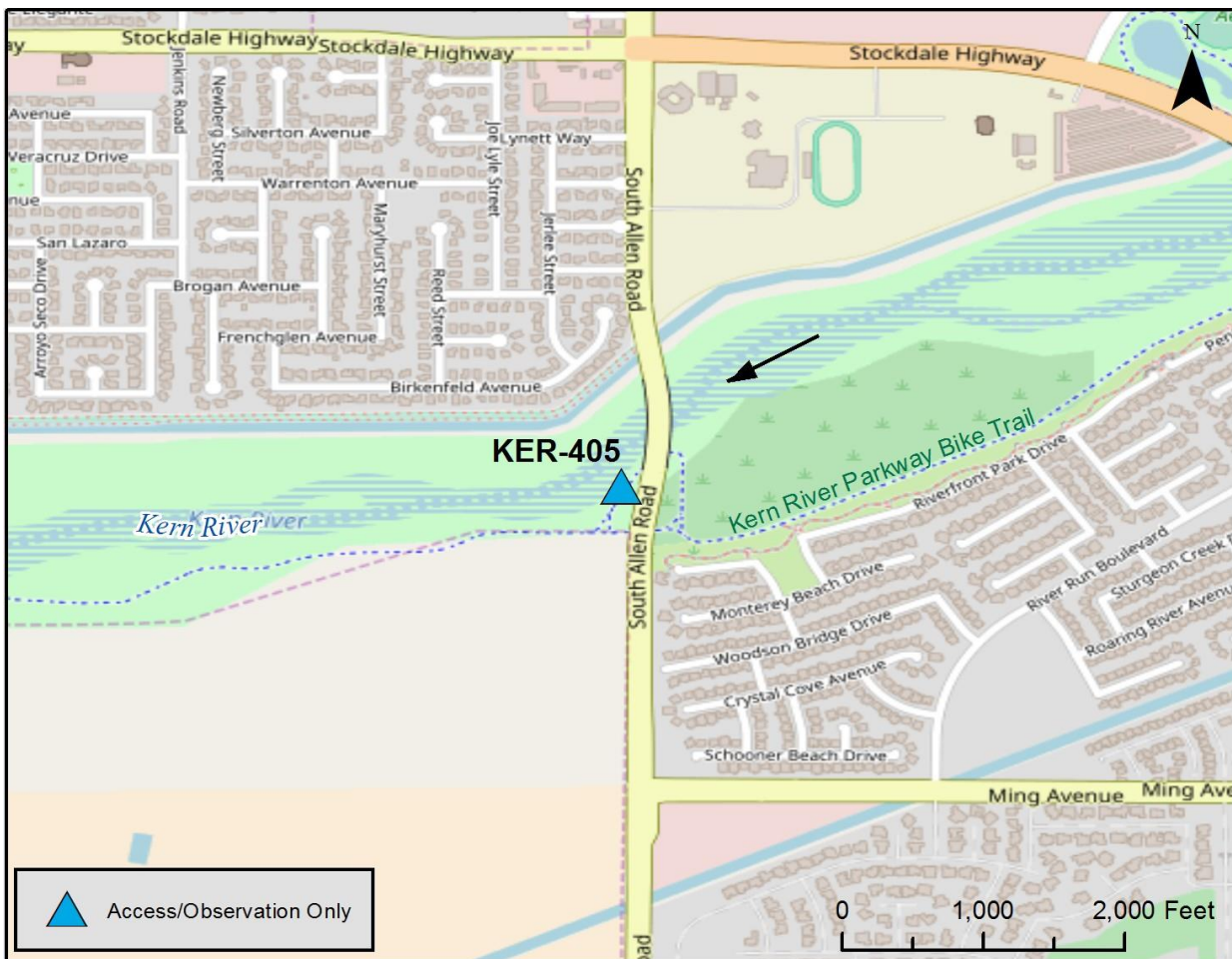
Nearest Address and Thomas Guide #: N/A

Cell Service: Yes, Verizon

From the North: Take Highway 99 South and take exit 26 toward CA-178 E/CA-58 W/Rosedale Hwy toward 24th St/ Buttonwillow. Turn right onto Rosedale Highway, then left on Mohawk Street. Bear right onto the Westside Parkway West ramp, exit Allen Road, and turn left. Continue on S Allen Road, and the access to the Kern River Parkway Bike Path will be on the right side as you cross the Kern River.

From the South: Take Highway 99 North and exit California Ave toward University of Phoenix. Turn right onto California Ave, then left onto Oak St. Turn left on Truxtun Ave, and take the ramp on the right toward Westside Parkway West. Exit at Allen Road and turn left. Continue on S Allen Road, and the access to the Kern River Parkway Bike Path will be on the right side as you cross the Kern River.

Overview Street Map



Hazards, Restrictions and Advice for Responders

- Heavy vehicle traffic on Allen Road
- Swift water during winter and spring flows
- Trip and fall hazards, slippery when wet
- Potential for homeless encampments
- High public use area due to bike path and user-created trails
- Biological hazards (e.g., wildlife including rattlesnakes)

Site Description and Field Notes

Site Location/Segment: KER-KN-K-005

This location is ideal for observation and survey access to the shoreline and is the last access point to the Kern River before the beginning of the Kern Water Bank. There is limited vehicle access downriver of this location, however the Kern River Parkway Bike Path parallels the river's edge continuously until it ends at Highway 43 (Enos Lane).

Site Contact/s: City of Bakersfield Water Resources (661) 326-3716; Kern Water Bank, Nick Torres (661) 440-4668

Site Images



Upstream



Downstream



Straight Across

RR = River Right RL = River Left

Photo Date: 07/11/2017