



Latitude: 35.35309
Longitude: -119.12943

Driving Directions

Highway Postmile: N/A

Railroad Milepost: N/A

Nearest Address and Thomas Guide #:

100 Jewetta Avenue
 Bakersfield, CA 93314

Cell Service: Yes, Verizon

From the North: Highway 99 South to Stockdale Hwy exit toward Brundage Ln/Cal State Univ. Turn right and continue on Stockdale Highway for approximately 5.7 miles. Turn right onto Jewetta Ave. and then right into Wincanton Drive to enter Aera Park. Turn left into large parking lot and drive to the end of the lot. Turn right to access equestrian parking lot until you reach a gate. Access to river right is through gate. Need to contact City of Bakersfield Water Resources (661) 326-3716.

From the South: Highway 99 North to Stockdale Hwy., exit toward Brudage Ln/Cal State Univ. Turn left onto Wible Road then left onto Stockdale Highway for approximately 5.7 miles. Turn right onto Jewetta Ave. and then right into Wincanton Drive to enter Aera Park. Turn left into large parking lot and drive to the end of the lot. Turn right to access equestrian parking lot until you reach a gate. Access to river right is through gate. Need to contact City of Bakersfield Water Resources (661) 326-3716.

Overview Street Map



Hazards, Restrictions and Advice for Responders

- Swift water during winter and spring flows
- Bike and jogging path
- Heavy vehicle and pedestrian traffic in park and along river's edge, speed limit 5 mph in park
- Stockdale Highway overpass just east of site
- BNSF rail crossing approximately 4.3 miles upstream from site
- Steep sandy banks
- Stinging nettle potentially growing on bank
- Rattlesnakes

Resources-At-Risk

Ecological: Western Pond Turtle, California Glossy Snake, Bakersfield Legless Lizard, Western Spadefoot, San Joaquin kit fox, American badger, Tulare grasshopper mouse, Swainson's Hawk, White-tailed Kite, Tricolored Blackbird, Burrowing Owl, San Joaquin woollythreads, Kern mallow, Horn's milk-vetch, Bakersfield cactus. Riparian habitat supports sensitive plant and animal communities including migratory birds and raptors.

Economic: Multiple water intakes north of river's edge, sporting events and picnic day use at park

Tribal: Contact the Native American Heritage Commission at (916) 373-3710.

Cultural and Historic: Contact the Southern San Joaquin Valley Information Center Information Center at (661) 654-2289.



Site Description and Field Notes

River Width: 105 meters
(345 feet)

Gradient: Low

Site Contact/s:

City of Bakersfield
Recreation & Parks
(661) 326-3866

City of Bakersfield Water
Resources (661) 326-3716

Site Location/Segment: KER-KN-J-025

This site is located just south of the Aera Park sports park. Entrance is through the park's equestrian parking lot and along a canal dirt access road. This location is not ideal for oil collection due to limited space and braiding of the river with vegetated sand bars. Access to river left is through the Park at River Walk at 11298 Stockdale Highway. Water flow at this location can vary seasonally from high to no flow.

Vehicular Access: Passenger vehicles, small trucks, small trailers, small vacuum truck

Recreational Use: Human contact, bike path runs adjacent to the river (river left), Sporting events and picnic day use at park, horseback riding

Boat Launches: Direct river access, small skiff at either river left or river right

ESI Shoreline Type: 1B Exposed, solid man-made structures; 4 Sandy bars and gently sloping banks; 8B Sheltered, solid man-made structures; 8C Sheltered riprap; 9B Vegetated low banks

Site Images



Upstream



Downstream



Straight Across

RR = River Right RL = River Left

Photo Date: 09/07/2017



Site Objectives: Not ideal for oil collection. Deflect oil and protect water intakes from oiling. Deploy boom and allow for oil collection on river right, if feasible.

Implementation: Boom A: Deploy 700 ft. of containment boom upstream at an angle to prevent entrainment, utilizing anchoring stakes. Oil collection will be on river right along river's edge. Boom B: Deploy 350 ft. of containment boom across entrance to inlet to protect water intakes. Boom C: Deploy 100 ft. of containment boom across northern outflow from Kern River to protect habitat.

Staging Area Location and Capabilities/Amenities/Waste Management: Limited staging on river right. A small vacuum truck and small trucks could use the space, but it is limited. Larger staging location is at the equestrian parking lot between Aera Park and the river. Electricity and restrooms are available at Aera Park. Access on river right is through the Park at River Walk.

Response Strategy Map (overview)

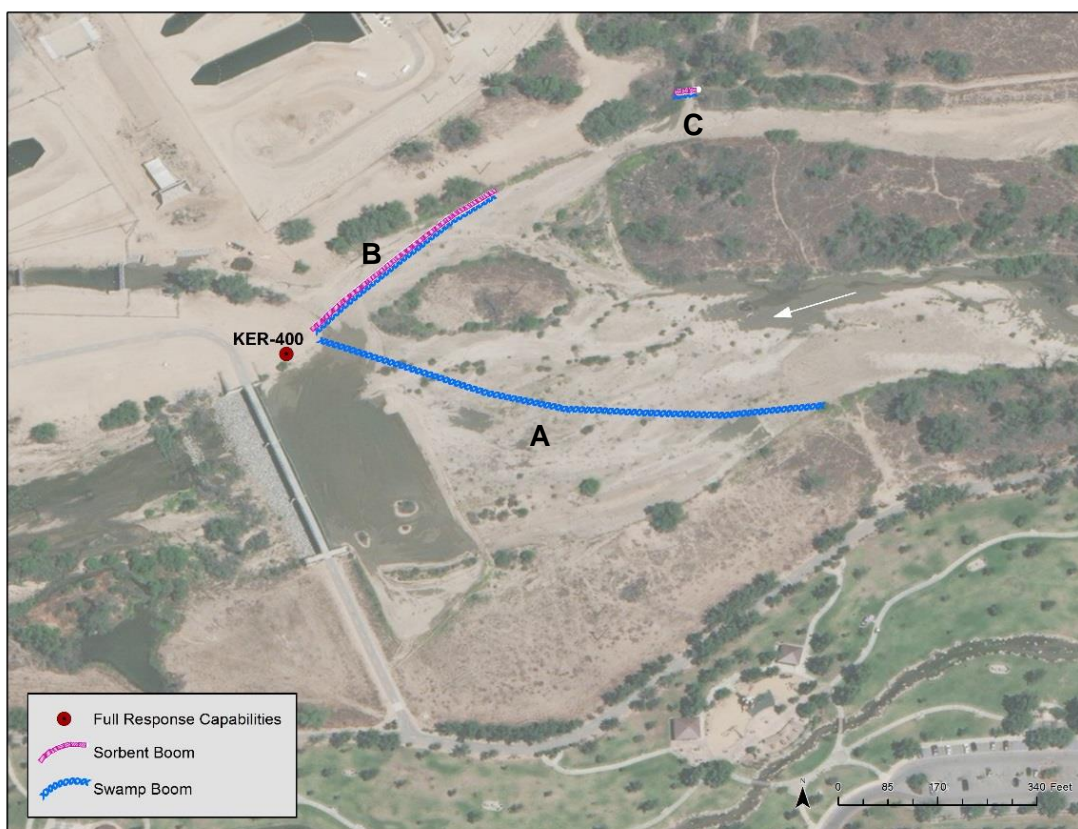


Table of Response Resources

Type	Sub-Type	Size	Unit	QTY - Unit	Special Equipment or Comments
Boom	Swamp	12	Inch	1150 ft.	Booming strategy only effective during medium to low flow. Boom A = 700-feet, Boom B = 350-feet, Boom C = 100-feet.
Boom	Sorbent	5 or 8	Inch	450 ft.	5 inches for light oiling, 8 inches for heavier oiling. Boom B = 350-feet, Boom C = 100-feet.
Stakes	Anchoring			18	6 stakes per boom, 3 on either end. Any boom with a "J" in its shape would require an additional stake. Recommend angled iron beams.
Anchors	Danforth	40	lb	2	Midstream anchoring for Boom A.
Skimmer	Drum				Number will vary depending on response.
Boat	Small Skiff			1	Only necessary if river currents and water levels are optimal for launching a skiff to deploy boom.
Personnel				8	4 boat crew and 4 shoreside personnel.