

Latitude: 35.36333
Longitude: -119.09084

Driving Directions

Highway Postmile: N/A

Railroad Milepost: N/A

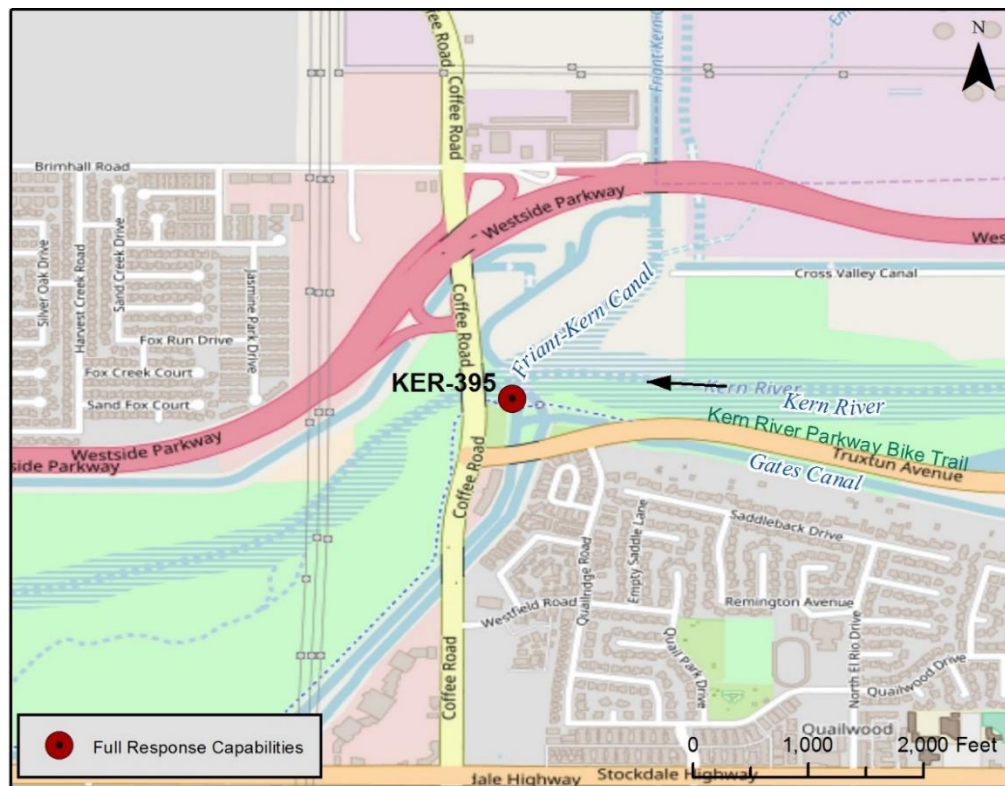
Nearest Address and Thomas Guide #:
 600 Coffee Road
 Bakersfield, CA 93309

Cell Service: Yes, Verizon

From the North: Highway 99 South to CA-178E/CA 58-W/Rosedale Highway toward 24th Street/Buttons Willow (Exit 26). Turn right onto Rosedale Highway CA 58-W. In approximately 2.6 miles, turn left onto Coffee Road. In approximately 2.4 miles turn left onto Truxtun Ave. Look for a chain link gate on the north side of Truxtun Ave., approximately 1/10 of a mile east of Coffee Road. If gate is locked, contact City of Bakersfield Water Resources (661) 326-3716.

From the South: Highway 99 North, to Rosedale Highway toward 24th Street (CA-58W)/Buttons Willow. Turn left toward Buttons Willow (Exit 26A), then left on Rosedale Highway. In approximately 2.6 miles, turn left onto Coffee Road. In approximately 2.4 miles turn left onto Truxtun Ave. Look for a chain link gate on the north side of Truxtun Ave., approximately 1/10 of a mile east of Coffee Road. If gate is locked, contact City of Bakersfield Water Resources (661) 326-3716.

Overview Street Map



Hazards, Restrictions and Advice for Responders

- Swift water during winter and spring flows
- Bike and jogging path
- Locked gate with dirt access road to river's edge
- Rattlesnakes
- Coffee Road overpass just west of site
- Multiple canal gates at this location
- BNSF rail crossing approximately 2 miles upstream from site
- Heavy traffic on Truxtun Avenue
- Multiple pipelines crossing immediately upstream and downstream from site

Resources-At-Risk

Ecological: Western Pond Turtle, Bakersfield Legless Lizard, San Joaquin kit fox, Bakersfield cactus. Riparian habitat supports sensitive plant and animal communities including migratory birds and raptors.

Economic: Friant-Kern Canal entrance and Kern River Weir.

Tribal: Contact the Native American Heritage Commission at (916) 373-3710.

Cultural and Historic: Contact the Southern San Joaquin Valley Information Center Information Center at (661) 654-2289.



Site Description and Field Notes

River Width: 182 meters
(597 feet)

Gradient: Low

Site Contact/s:

City of Bakersfield Water
Resources (661) 326-3716

Site Location/Segment: KER-KN-J-015

This site is located just east of Coffee Road where multiple canals channel water from Kern River. Site access is through a locked gate. The City of Bakersfield Water Resources would need to be contacted (661) 326-3716 to obtain access. There is limited space for equipment and staging. Access to river right is limited but could be reached using a small skiff. Water flow at this location can vary seasonally from high to no flow.

Vehicular Access: Passenger vehicles, small trucks, small trailers, small vacuum truck

Recreational Use: Bike path runs adjacent to the river (river left)

Boat Launches: Direct river access, small skiff from river's edge (river left)

ESI Shoreline Type: 1B Exposed, solid man-made structures; 4 Sandy bars and gently sloping banks; 9B Vegetated low banks

Site Images



Upstream



Downstream



Straight Across

RR = River Right RL = River Left

Photo Date: 07/11/2017

Site Objectives: Prevent oil from entering Friant-Kern Canal and Kern River Weir, deploy boom for oil collection on river left.

Implementation: Boom A and Boom B: Deploy two 700 ft. of cascading containment booms upstream from Friant-Kern Canal and Kern River Weir intakes at an angle to prevent entrainment, using anchoring stakes. Oil collection will be on river left. Boom C: Deploy 200 ft. of containment boom across entrance to Friant-Kern and Kern River Weir as secondary containment.

Staging Area Location and Capabilities/Amenities/Waste Management: Staging on river left. Truck with small trailer and small vacuum truck could access river's edge but staging of equipment and vehicles would need to be 1.8 miles east at the Kern River Parkway Park on Truxtun Ave. Room for decontamination but no electricity or bathrooms onsite.

Response Strategy Map (overview)

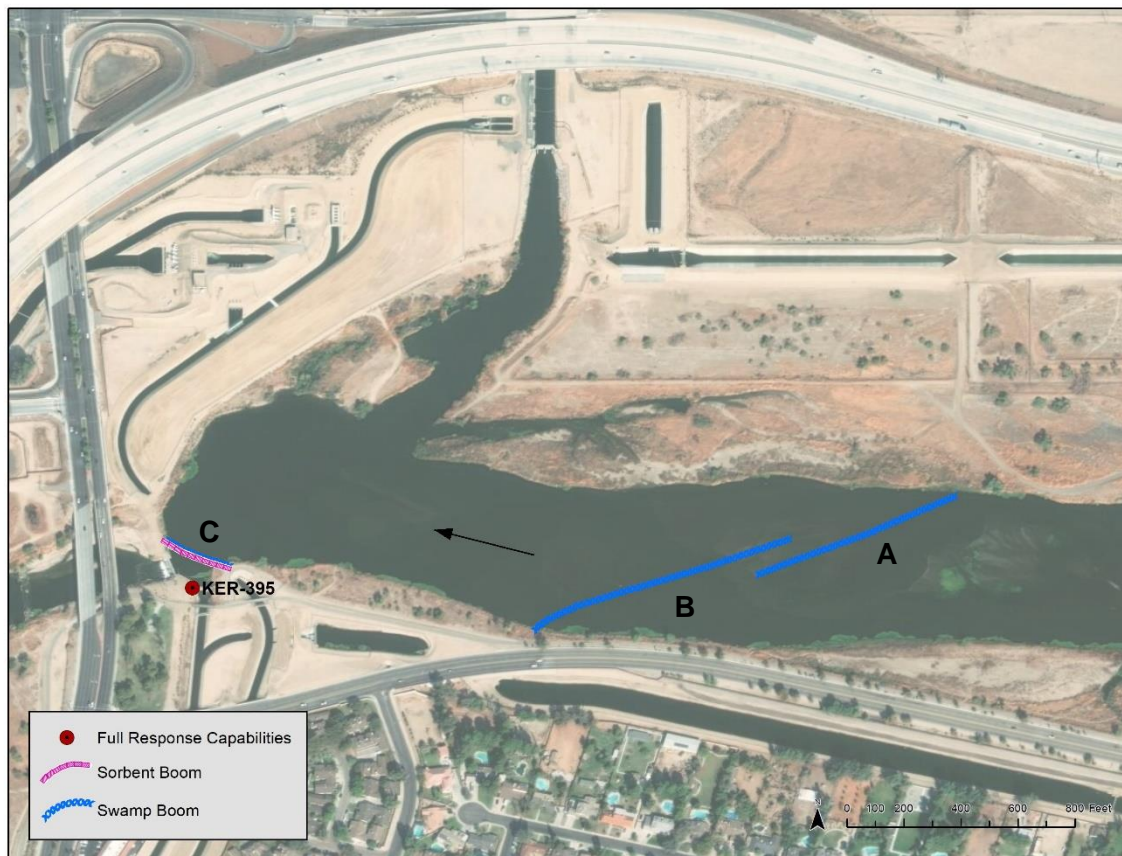


Table of Response Resources

Type	Sub-Type	Size	Unit	QTY - Unit	Special Equipment or Comments
Boom	Swamp	12	Inch	1600 ft.	Booming strategy only effective during medium to low flow. Boom A = 700-feet, Boom B = 700-feet. Boom C = 200-feet.
Boom	Sorbent	5 or 8	Inch	200 ft.	5 inches for light oiling, 8 inches for heavier oiling. Boom C = 200-feet.
Stakes	Anchoring			12	6 stakes per boom, 3 on either end. Any boom with a "J" in its shape would require an additional stake. Recommend angled iron beams.
Anchors	Danforth	40	lb	2	Midstream anchoring for Boom A and Boom B.
Skimmer	Drum				Number will vary depending on response.
Boat	Small Skiff			1	Only necessary if river currents and water levels are optimal for launching a skiff to deploy boom.
Personnel				8	4 boat crew and 4 shoreside personnel.