

**Latitude:** 35.39987**Longitude:** -119.02690**Driving Directions****Highway Postmile:** N/A**Railroad Milepost:** N/A**Nearest Address and Thomas Guide #:**401 Willow Drive  
Bakersfield, CA 93308**Cell Service:** Yes, Verizon

**From the North:** Highway 99 South to Merle Haggard/7<sup>th</sup> Standard exit. Turn left and head east on Merle Haggard Drive. Turn right at Airport Drive and head south to Roberts Lane. Turn left on Roberts Lane. Head east on Roberts Lane, turn right on Oildale Drive. Head south on Oildale Drive, turn left at Willow Drive to access Riverview Park. Alternatively, continue south on Oildale Drive to the maintenance road along the north bank of the Calloway canal (river right). Access river left by crossing the weirs and driving along the bike path. City of Bakersfield Water Resources would need to be contacted to unlock gate (661) 326-3716.

**From the South:** Highway 99 North to Airport Drive exit. Continue straight on Airport Drive, turn right on to Roberts Lane. Head east on Roberts Lane, turn right on Oildale Drive. Head south on Oildale Drive, turn left at Willow Drive to access Riverview Park. Alternatively, continue south on Oildale Drive to the maintenance road along the north bank of the Calloway canal (river right). Access river left by crossing the weirs and driving along the bike path. City of Bakersfield Water Resources would need to be contacted to unlock gate (661) 326-3716.

**Overview Street Map****Hazards, Restrictions and Advice for Responders**

- Swift water during winter and spring flows
- Locked gates
- Weirs with multiple canal gates
- Bicycles and pedestrians on bike path
- Rattlesnakes
- Steep sandy banks
- Homeless encampments in the area
- Equestrian riding with stables in the area
- UP rail crossing immediately downstream from site

**Resources-At-Risk**

**Ecological:** Western Pond Turtle, Bakersfield Legless Lizard, San Joaquin kit fox, Bakersfield cactus. Riparian habitat supports sensitive plant and animal communities including migratory birds and raptors.

**Economic:** Water intakes for Calloway Canal and Weir for Kern River, sporting events at Riverview Park.

**Tribal:** Contact the Native American Heritage Commission at (916) 373-3710.

**Cultural and Historic:** Contact the Southern San Joaquin Valley Information Center Information Center at (661) 654-2289.



## Site Description and Field Notes

**River Width:**  
230 meters (755 feet)

**Gradient:** Low

**Site Contact/s:**

City of Bakersfield Water  
Resources  
(661) 326-3716

**Site Location/Segment:** KER-KN-J-005

This site is located just south of the Riverview Park. Access to the site is through the parking lot to the river's edge or through a gate on the maintenance road off Oildale Drive. Homeless encampments exist in the park and river areas. Horse stables are present and equestrian trails are along the river right. Access river left from the bike trail on southbound Chester Ave and follow west to site. Water flow at this location can vary seasonally from high to no flow.

**Vehicular Access:** Passenger vehicles, small trucks, vacuum trucks, trailers

**Recreational Use:** Bike and pedestrian trail, equestrian trail, baseball field at park

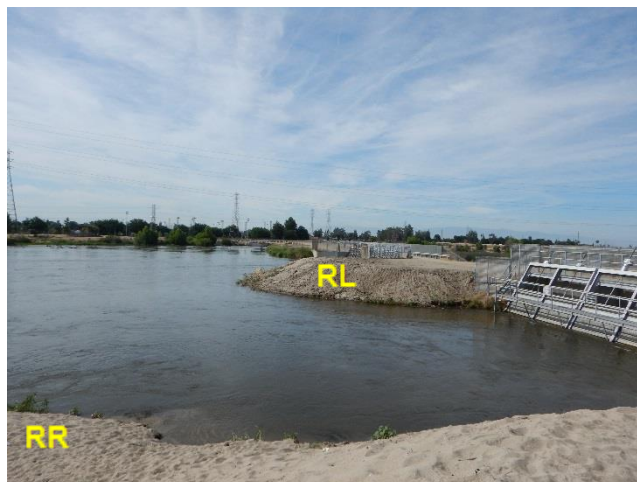
**Boat Launches:** Direct river access, small skiff at either river left or river right

**ESI Shoreline Type:** 1B Exposed, solid man-made structures; 3B Exposed, eroding banks in unconsolidated sediments; 4 Sandy bars and gently sloping banks; 9B Vegetated low banks

## Site Images



Upstream



Downstream



Straight Across

RR = River Right RL = River Left

Photo Date: 06/08/2017

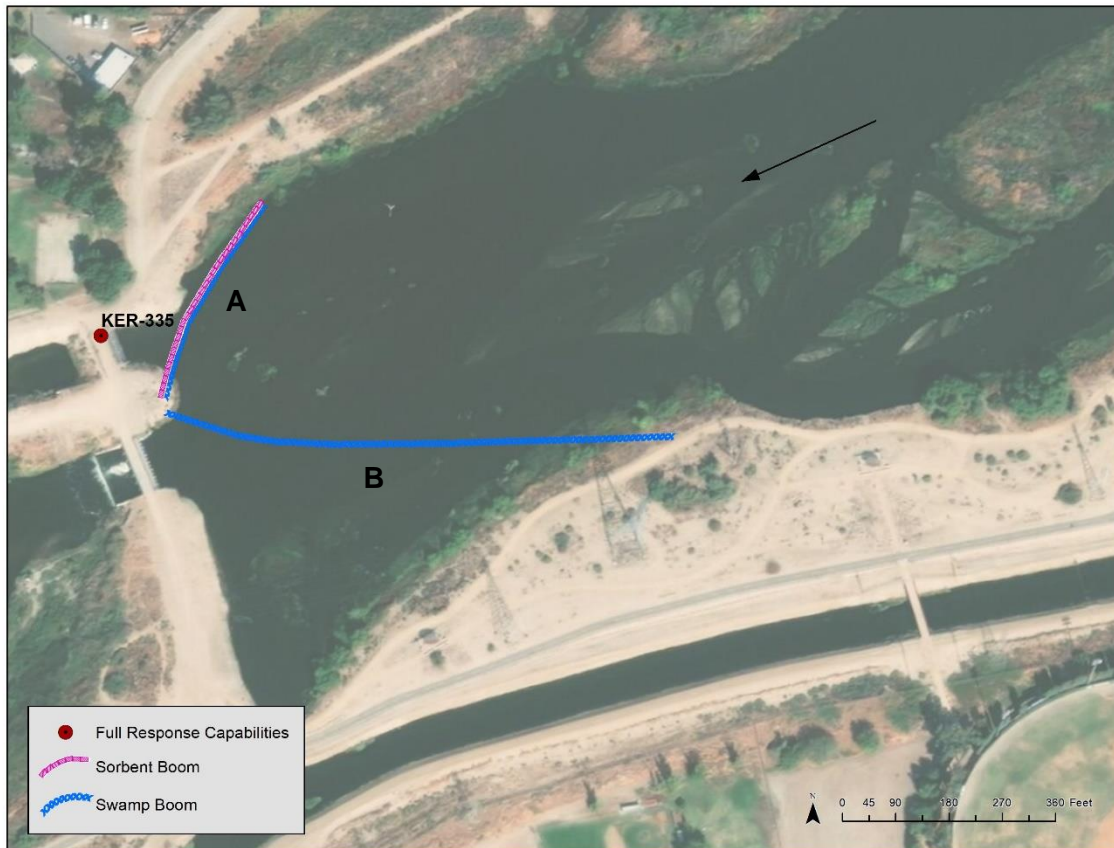


**Site Objectives:** Boom to prevent oil from entering Calloway Weir and Kern River Weir and allow for collection of oil.

**Implementation:** Boom A: Deploy 400 ft. of containment boom upstream from Calloway Weir at an angle to prevent entrainment, using anchoring stakes. Oil collection will be between Calloway Weir and Kern River Weir. Boom B: Deploy 700 ft. of containment boom to protect Kern River Weir and Carrier Canal Weir at an angle to prevent entrainment, using anchoring stakes.

**Staging Area Location and Capabilities/Amenities/Waste Management:** Limited staging on river right. A small vacuum truck and small trucks could use the space, but it is limited. Larger staging location is at the Riverview Park parking lot. Electricity and restrooms are available at the park. Room for decontamination.

### Response Strategy Map (overview)



**Table of Response Resources**

Type	Sub-Type	Size	Unit	QTY - Unit	Special Equipment or Comments
Boom	Swamp	12	Inch	1100 ft.	Booming strategy only effective during medium to low flow. Boom A = 400-feet, Boom B = 700-feet.
Boom	Sorbent	5 or 8	Inch	400 ft.	5 inches for light oiling, 8 inches for heavier oiling. Boom A = 400-feet
Stakes	Anchoring			12	6 stakes per boom, 3 on either end. Any boom with a "J" in its shape would require an additional stake. Recommend angled iron beams.
Anchors	Danforth	40	lb	3	Midstream anchoring.
Skimmer	Drum				Number will vary depending on response.
Boat	Small Skiff			1	Only necessary if river currents and water levels are optimal for launching a skiff to deploy boom.
Personnel				8	4 boat crew and 4 shoreside personnel.

**This Page Intentionally Left Blank**