



Latitude: 35.41596
Longitude: -119.01250

Driving Directions

Highway Postmile: N/A

Railroad Milepost: N/A

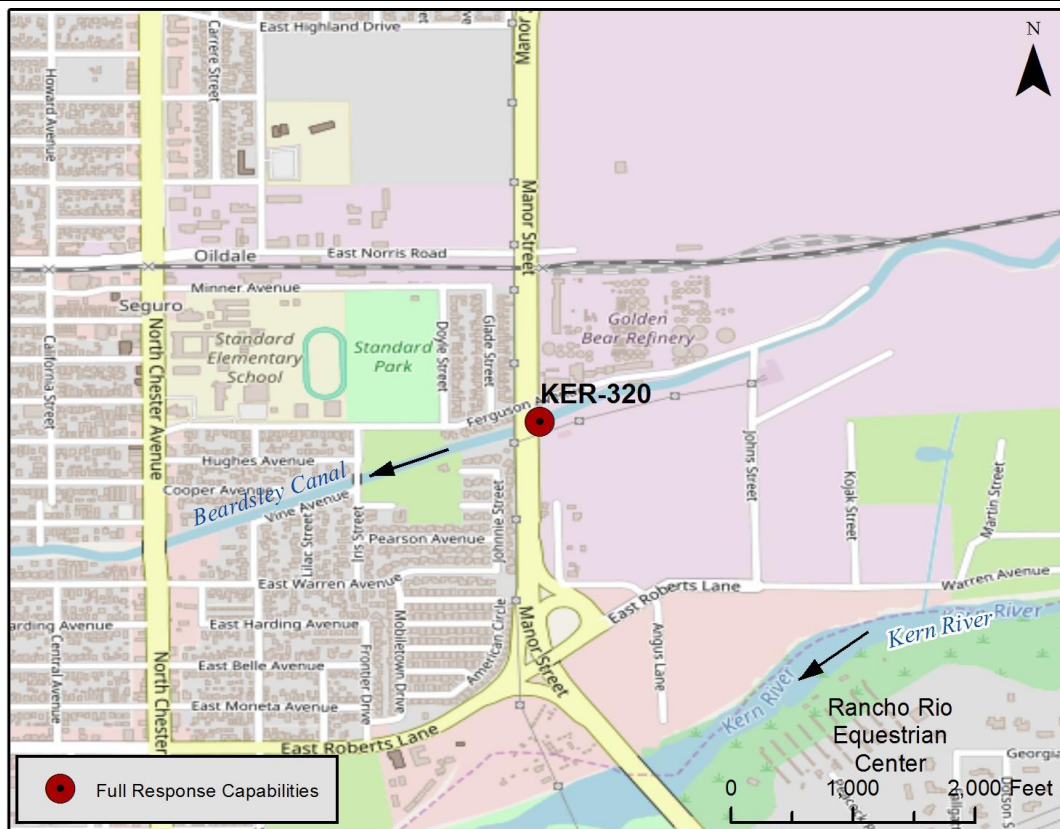
Nearest Address and Thomas Guide #
 1134 Manor Street
 Bakersfield, CA 93308

Cell Service: Yes, Verizon

From the North: Highway 99 South to Merle Haggard/7th Standard exit. Turn left and head east on Merle Haggard Drive. Turn right at Airport Drive and then left onto China Grade Loop. Stay on China Grade Loop for approximately 1.5 miles to Manor Street, turn right on Manor Street. Site is roughly 0.75 miles south of China Grade Loop, just south of the intersection of Manor and Ferguson Ave. (canal right). Contact Tricor Refinery for access to parking area.

From the South: Highway 99 North to Merle Haggard/7th Standard exit. Turn right and head east on Merle Haggard Drive. Turn right at Airport Drive and then left onto China Grade Loop. Stay on China Grade Loop for approximately 1.5 miles to Manor Street, turn right on Manor Street. Site is roughly 0.75 miles south of China Grade Loop, just south of the intersection of Manor and Ferguson Ave. (canal right). Contact Tricor Refinery for access to parking area.

Overview Street Map



Hazards, Restrictions and Advice for Responders

- Locked gates
- Proximity to residential area
- Active oil refinery (Tricor) adjacent to site
- SJVR Rail crossing Manor Street just north of site
- Pedestrian and vehicle traffic on Manor Street
- Concrete lined channel, slippery when wet

Resources-At-Risk

Ecological: Western Pond Turtle, San Joaquin kit fox, Bakersfield cactus

Economic: Beardsley Canal for agricultural water use

Tribal: Contact the Native American Heritage Commission at (916) 373-3710.

Cultural and Historic: Contact the Southern San Joaquin Valley Information Center at (661) 654-2289.



Site Description and Field Notes

River Width:

10 meters (30 feet)

Gradient: Low

Site Contact/s:

Chevron Security
(661) 392-2425
City of Bakersfield Water
Resources
(661) 326-3716
Tricor Refinery
(661) 393-7110

Site Location/Segment: KER-KN-I-020

This canal response site, adjacent to the Kern River, is located just east of Manor Street and south of Tricor Refinery. Access to the site is through a locked gate just south of the refinery employee parking lot. City of Bakersfield Water Resources would need to be contacted, as well as the refinery, prior to access. Watch traffic while turning into refinery or the dirt access road, use vehicle hazard lights.

Vehicular Access: Passenger vehicles, small trucks, vacuum trucks, trailers

Recreational Use: N/A

Boat Launches: N/A

ESI Shoreline Type: 1B Exposed, solid man-made structures

Site Images



Upstream



Downstream



Straight Across

CR = Canal Right CL = Canal Left

Photo Date: 06/08/2017



Site Objectives: Boom to prevent oil from continuing downstream of canal and allow for collection of oil.

Implementation: Deploy 200 ft. of containment boom upstream from oil collection point at an angle to prevent entrainment, using anchoring stakes. Oil collection will be on canal right.

Staging Area Location and Capabilities/Amenities/Waste Management: Limited room for staging boom trucks, trailer, vacuum trucks and temporary storage tanks. Room for decontamination. Additional staging available at Tricor Refining (Golden Bear) employee parking facility adjacent to site. No electricity and no restrooms onsite.

Response Strategy Map (overview)

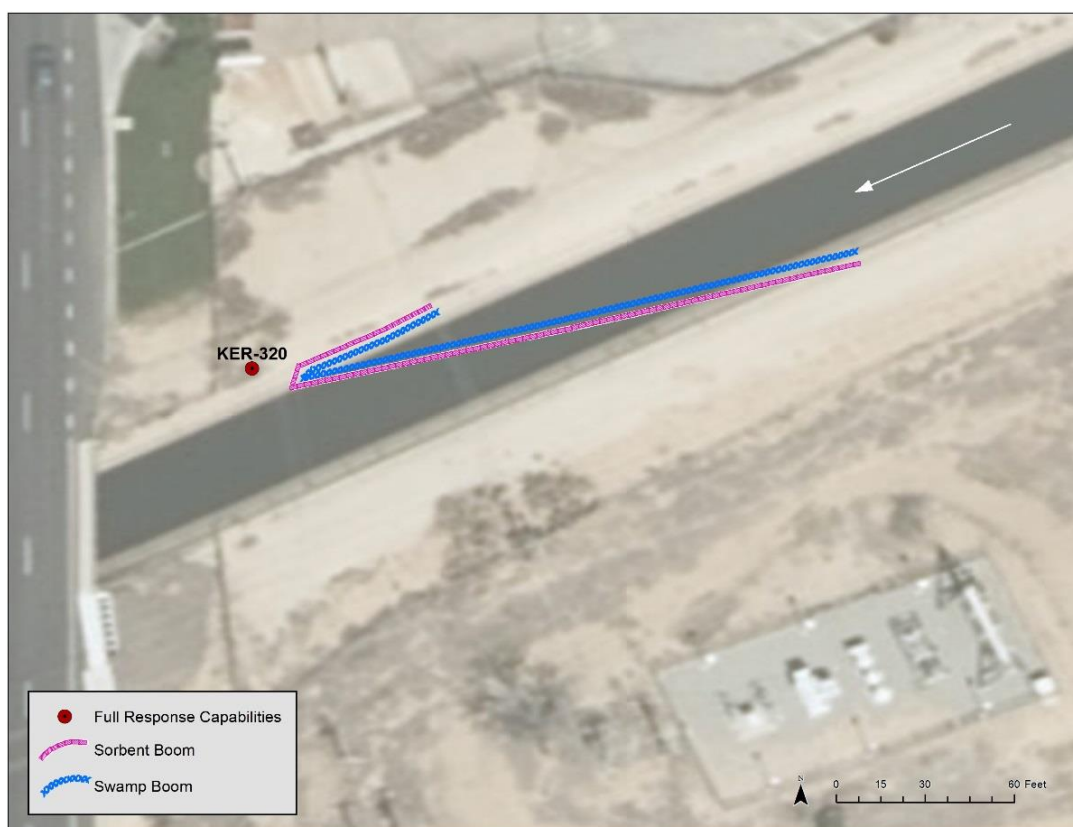


Table of Response Resources

Type	Sub-Type	Size	Unit	QTY - Unit	Special Equipment or Comments
Boom	Swamp	12	Inch	200 ft.	Booming strategy only effective during medium to low flow
Boom	Sorbent	5 or 8	Inch	200 ft.	5 inches for light oiling, 8 inches for heavier oiling
Stakes	Anchoring			6	6 stakes per boom, 3 on either end. Any boom with a "J" in its shape would require an additional stake. Recommend angled iron beams.
Anchors	Danforth	40	lb	1	Midstream anchoring.
Skimmer	Drum				Number will vary depending on response.
Boat	Small Skiff			1	Only necessary if river currents and water levels are optimal for launching a skiff to deploy boom.
Personnel				8	4 boat crew and 4 shoreside personnel.