

Latitude: 35.41120

Longitude: -118.99183

## Driving Directions

Highway Postmile: N/A

Railroad Milepost: N/A

Nearest Address and Thomas Guide #:

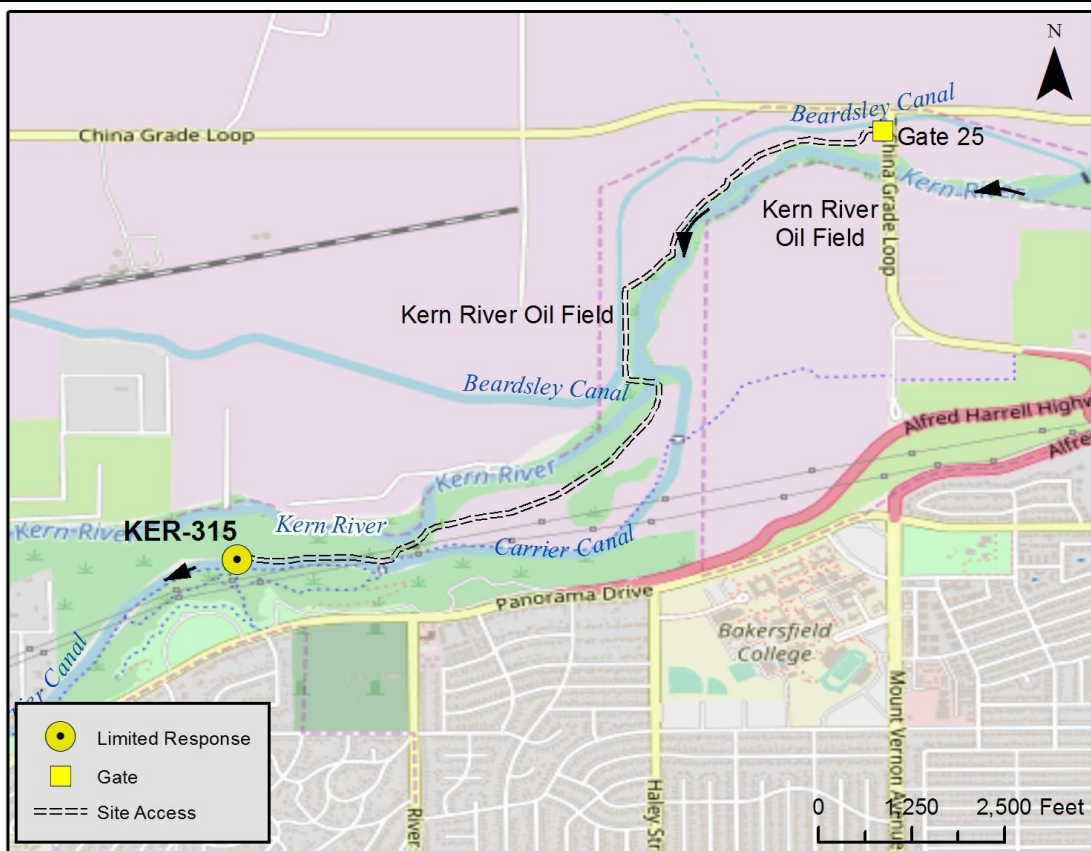
1607 China Grade Loop  
Bakersfield, CA 93308

Cell Service: Yes, Verizon

**From the North:** Highway 99 South to Merle Haggard/7<sup>th</sup> Standard exit. Turn left and head east on Merle Haggard Drive. Turn right at Airport Drive and then left onto China Grade Loop. Stay on China Grade Loop for approximately 4 miles to Gate 25. Turn right to enter and drive south-west along access roads between the Beardsley canal and the Kern River to reach the Rocky Point Weir. Drive over the Rocky Point Weir and turn right. Follow access road along Carrier Canal to site (river right).

**From the South:** Highway 99 North to Merle Haggard/7<sup>th</sup> Standard exit. Turn right and head east on Merle Haggard Drive. Turn right at Airport Drive and then left onto China Grade Loop. Stay on China Grade Loop for approximately 4 miles to Gate 25. Turn right to enter and drive south-west along access roads between the Beardsley canal and the Kern River to reach the Rocky Point Weir. Drive over the Rocky Point Weir and turn right. Follow access road along Carrier Canal to site (river right).

## Overview Street Map



## Hazards, Restrictions and Advice for Responders

- Swift water during winter and spring flows
- Active oil field operations, watch for equipment operators and vehicles
- Locked gates
- Stinging nettle potentially growing on bank
- Weir with multiple canal gates
- Equestrian and walking trails, bike path on part of access road to site

## Resources-At-Risk

**Ecological:** Western Pond Turtle, San Joaquin kit fox, Bakersfield cactus. Riparian habitat supports sensitive plant and animal communities including migratory birds and raptors.

**Economic:** Water intake to Kern River

**Tribal:** Contact the Native American Heritage Commission at (916) 373-3710.

**Cultural and Historic:** Contact the Southern San Joaquin Valley Information Center at (661) 654-2289.

## Site Description and Field Notes

**River Width:** 30 meters  
(90 feet)

**Gradient:** Medium

**Site Contact/s:**

Chevron Security  
(661) 392-2425  
City of Bakersfield Water  
Resources  
(661) 326-3716  
Panorama Vista Preserve  
(661) 872-3569

**Site Location/Segment:** KER-KN-I-015

This canal response site, adjacent to the Kern River, is located within the Panorama Vista Preserve, which is adjacent to the Chevron North American Exploration and Production Company's active oil field within the Kern River Oil Field. Multiple dirt access roads are present and often wind around active pumping units. Access to canal left is by taking China Grade Loop south over the river. Turn right to enter Gate 10 in 0.4 miles. Continue west for 0.3 miles and turn left onto dirt access road. Follow road to river's edge (river left). Continue south along access road to follow canal left to site (canal left).

**Vehicular Access:** Passenger vehicles, small trucks, vacuum trucks, trailers. Site considered "Limited Response," due to narrow roads and access constraints.

**Recreational Use:** Bike trail, equestrian and walking trails

**Boat Launches:** Direct canal access, small skiff only from bank at canal right

**ESI Shoreline Type:** 1B Exposed, solid man-made structures; 8F Vegetated, steeply-sloping bluffs; 9B Vegetated low banks

## Site Images



Upstream



Downstream



Straight Across

CR = Canal Right CL = Canal Left

Photo Date: 06/07/2017

**Site Objectives:** Boom to prevent oil from entering Carrier Canal outflow and allow for collection of oil.

**Implementation:** Boom A: Deploy 250 ft. of containment boom upstream from Carrier Canal outflow at an angle to prevent entrainment, using anchoring stakes. Oil collection will be on canal right. Boom B: Deploy 200 ft. of containment boom across the outflow to prevent from oiling.

**Staging Area Location and Capabilities/Amenities/Waste Management:** Limited room for staging boom trucks, trailer, vacuum trucks and temporary storage tanks. Room for decontamination. Additional staging available along dirt access roads between bike path and river left. No electricity and no restrooms onsite.

### Response Strategy Map (overview)

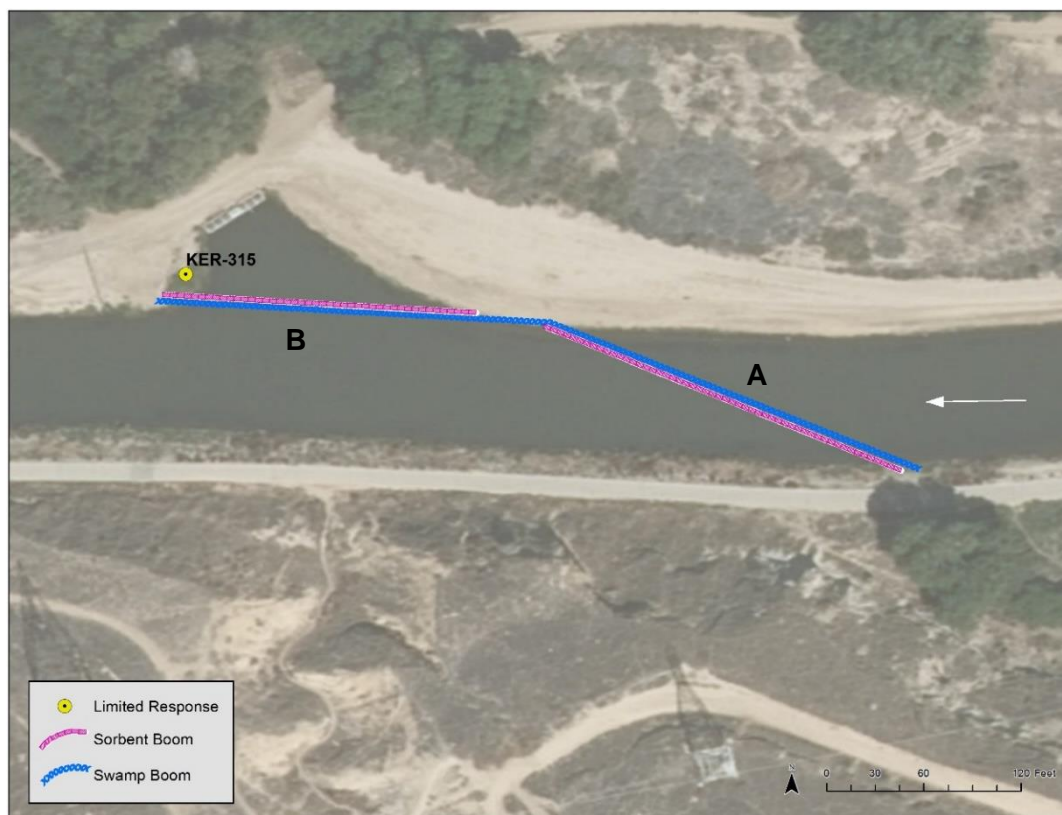


Table of Response Resources

Type	Sub-Type	Size	Unit	QTY - Unit	Special Equipment or Comments
Boom	Swamp	12	Inch	450 ft.	Booming strategy only effective during medium to low flow. Boom A = 250-feet, Boom B = 200-feet
Boom	Sorbent	5 or 8	Inch	450 ft.	5 inches for light oiling, 8 inches for heavier oiling. Boom A = 250-feet, Boom B = 200-feet
Stakes	Anchoring			12	6 stakes per boom, 3 on either end. Any boom with a "J" in its shape would require an additional stake. Recommend angled iron beams.
Anchors	Danforth	40	lb	2	Midstream anchoring for Boom A and Boom B.
Skimmer	Drum				Number will vary depending on response.
Boat	Small Skiff			1	Only necessary if river currents and water levels are optimal for launching a skiff to deploy boom.
Personnel				8	4 boat crew and 4 shoreside personnel.