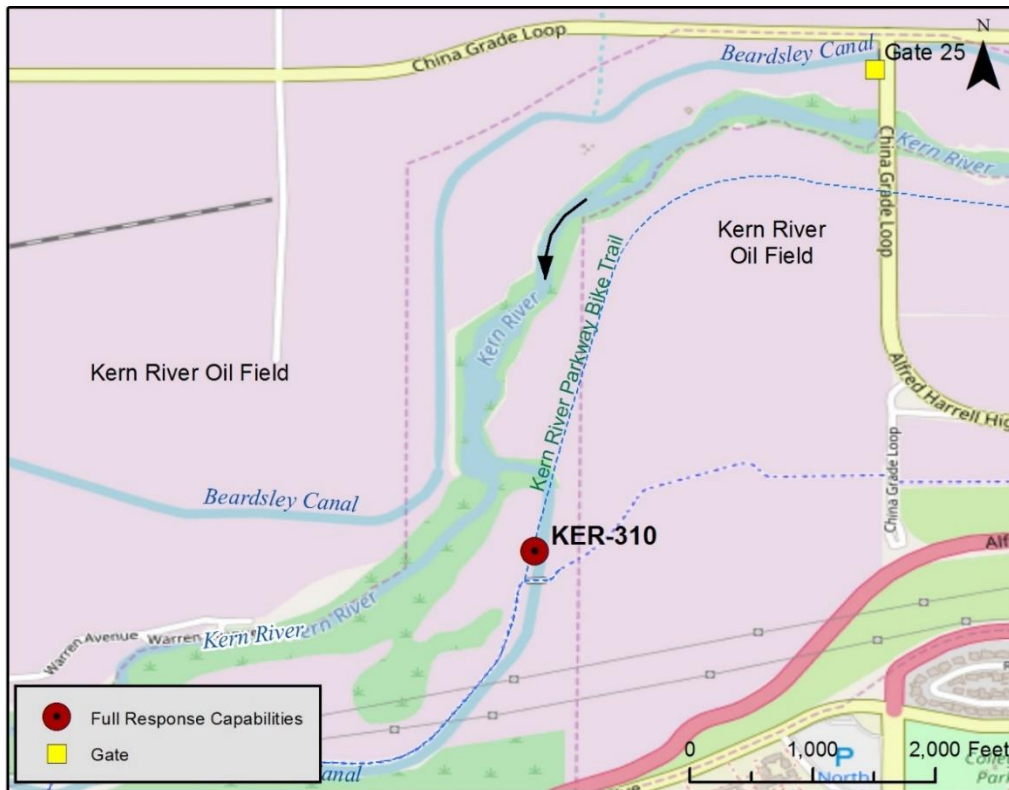




Latitude: 35.41627 Longitude: -118.97562	Driving Directions
Highway Postmile: N/A	<p>From the North: Highway 99 South to Merle Haggard/7th Standard exit. Turn left and head east on Merle Haggard Drive. Turn right at Airport Drive and then left onto China Grade Loop. Stay on China Grade Loop for approximately 4 miles. Turn right to stay on China Grade Loop and then turn right into Gate 25. Drive south-west along access roads between the Beardsley canal and the Kern River and turn left to drive over Rocky Point Weir. Turn right and follow road along canal to site (canal right).</p> <p>From the South: Highway 99 North to Airport Drive exit. Turn right at Roberts Lane. Stay on Roberts Lane for approximately 1.5 miles to Manor Street; turn left to head north on Manor Street. Continue along Manor Street to China Grade Loop and turn right. Drive approximately 2.5 miles on China Grade Loop. Turn right to stay on China Grade Loop and then turn right into Gate 25. Drive south-west along access roads between the Beardsley canal and the Kern River and turn left to drive over Rocky Point Weir. Turn right and follow road along canal to site (canal right).</p>
Railroad Milepost: N/A	
Nearest Address and Thomas Guide #: 1607 China Grade Loop Bakersfield, CA 93308	
Cell Service: Yes, Verizon	

Overview Street Map



Hazards, Restrictions and Advice for Responders

- Swift water during winter and spring flows
- Active oil field operations, watch for equipment operators and vehicles, flame resistant clothing recommended
- Locked gates
- Stinging nettle potentially growing on bank
- Rattlesnakes
- Weir with multiple canal gates
- Canal Outflow back into Kern River 1.1 miles downstream
- Equestrian and walking trails, bike path crosses canal immediately downstream of site

Resources-At-Risk

Ecological: Western Pond Turtle, San Joaquin kit fox, Bakersfield cactus. Panorama Vista Preserve. Riparian habitat supports sensitive plant and animal communities including migratory birds and raptors.

Economic: Water Intake for Panorama Vista Preserve

Tribal: Contact the Native American Heritage Commission at (916) 373-3710.

Cultural and Historic: Contact the Southern San Joaquin Valley Information Center at (661) 654-2289.



Site Description and Field Notes

River Width: 30 meters (98 feet)	Site Location/Segment: KER-KN-I-015 This canal response site, adjacent to the Kern River, is located within the Panorama Vista Preserve, which is adjacent to the Chevron North American Exploration and Production Company's active oil field within the Kern River Oil Field. Multiple dirt access roads are present and often wind around active pumping units. Access to canal left is by taking China Grade Loop south over the river. Turn right to enter Gate 10 in 0.4 miles. Continue west for 0.3 miles and turn left onto dirt access road. Follow road to river's edge (river left). Continue southwest along access road that parallels canal for approximately 1.3 miles to site (canal left). Vehicular Access: Passenger vehicles, small trucks, vacuum trucks, trailers Recreational Use: Bike trail, equestrian and walking trails Boat Launches: Direct canal access, small skiff on canal left or canal right ESI Shoreline Type: 1B Exposed, solid man-made structures; 3B Exposed, eroding banks in unconsolidated sediments; 8F Vegetated, steeply sloping bluffs; 9B Vegetated low banks
Gradient: Medium	
Site Contact/s: Chevron Security (661) 392-2425 City of Bakersfield Water Resources (661) 326-3716 Panorama Vista Preserve (661) 872-3569	

Site Images



Upstream



Downstream



Intake Gate

CR = Canal Right, CL = Canal Left

Photo Date: 02/16/2018



Site Objectives: Boom to prevent oil from entering Carrier Canal Weir and Panorama Vista Preserve Intake and allow for collection of oil.

Implementation: Deploy 200 ft. of containment boom upstream from Carrier Canal Weir and Panorama Vista Preserve intake at an angle to prevent entrainment, using anchoring stakes. Oil collection will be on canal right.

Staging Area Location and Capabilities/Amenities/Waste Management: Limited room for staging boom trucks, trailer, vacuum trucks and temporary storage tanks. Room for decontamination. Additional staging available along dirt access roads between bike path and river left. No electricity and no restrooms onsite.

Response Strategy Map (overview)



Table of Response Resources

Type	Sub-Type	Size	Unit	QTY - Unit	Special Equipment or Comments
Boom	Swamp	12	Inch	200 ft.	Booming strategy only effective during medium to low flow
Boom	Sorbent	5 or 8	Inch	200 ft.	5 inches for light oiling, 8 inches for heavier oiling
Stakes	Anchoring			6	6 stakes per boom, 3 on either end. Any boom with a "J" in its shape would require an additional stake. Recommend angled iron beams.
Anchors	Danforth	40	lb	1	Midstream anchoring.
Skimmer	Drum				Number will vary depending on response.
Boat	Small Skiff			1	Only necessary if river currents and water levels are optimal for launching a skiff to deploy boom.
Personnel				8	4 boat crew and 4 shoreside personnel.