



Latitude: 35.41781
Longitude: -118.97631

Driving Directions

Highway Postmile: N/A

Railroad Milepost: N/A

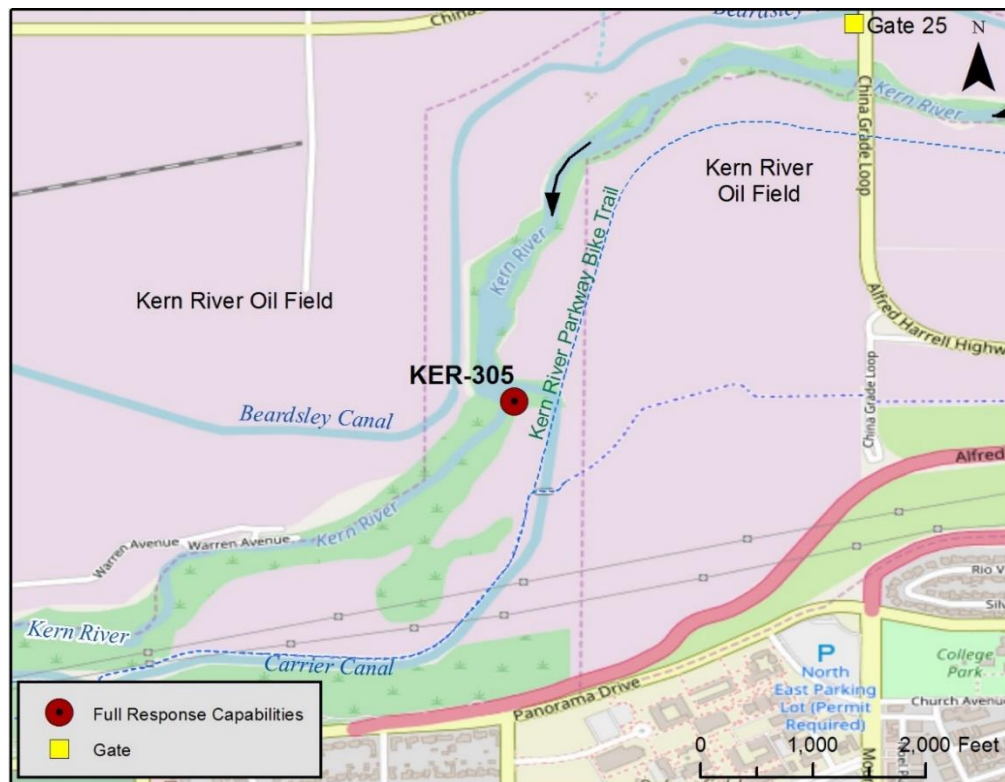
Nearest Address and Thomas Guide #:
 1607 China Grade Loop
 Bakersfield, CA 93308

Cell Service: Yes, Verizon

From the North: Highway 99 South to Merle Haggard/7th Standard exit. Turn left and head east on Merle Haggard Drive. Turn right at Airport Drive and then left onto China Grade Loop. Stay on China Grade Loop for approximately 4 miles. Turn right to stay on China Grade Loop. Turn right into Gate 25. Drive south-west along access road between the Beardsley canal and the Kern River to reach Beardsley canal gate. Turn left and drive over Rocky Point Weir bridge to access site (river left).

From the South: Highway 99 North to Merle Haggard/7th Standard exit. Turn right and head east on Merle Haggard Drive. Turn right at Airport Drive and then left onto China Grade Loop. Stay on China Grade Loop for approximately 4 miles. Turn right to stay on China Grade Loop. Turn right into Gate 25. Drive south-west along access road between the Beardsley canal and the Kern River to reach Beardsley canal gate. Turn left and drive over Rocky Point Weir bridge to access site (river left).

Overview Street Map



Hazards, Restrictions and Advice for Responders

- Swift water during winter and spring flows
- Active oil field operations, watch for equipment operators and vehicles, flame resistant clothing recommended
- Locked gates
- Stinging nettle potentially growing on bank
- Rattlesnakes
- Weir with multiple canal gates
- Private residences 1.5 miles downstream on river left
- Equestrian and walking trails, bike path southeast of site

Resources-At-Risk

Ecological: Western Pond Turtle, San Joaquin kit fox, Bakersfield cactus, Panorama Vista Preserve. Riparian habitat supports sensitive plant and animal communities including migratory birds and raptors.

Economic: Carrier Canal water intake

Tribal: Contact the Native American Heritage Commission at (916) 373-3710.

Cultural and Historic: Contact the Southern San Joaquin Valley Information Center Information Center at (661) 654-2289.

Site Description and Field Notes

River Width:
110 meters (360 feet)

Gradient: Medium

Site Contact/s:

Chevron Security
(661) 392-2425

City of Bakersfield Water
Resources
(661) 326-3716

Panorama Vista Preserve
(661) 872-3569

Site Location/Segment: KER-KN-I-015

This site is located within Chevron North American Exploration and Production Company's active oil field within the Kern River Oil Field. Multiple dirt access roads are present and often wind around active pumping units. The most feasible location for boom deployment and oil collection is on river left, north of Carrier Canal entrance. To access this location, take China Grade Loop south over the river. Turn right to enter Gate 10 in 0.4 miles. Continue west for 0.3 miles and turn left onto dirt access road. Follow road to river's edge (river left).

Vehicular Access: Passenger vehicles, small trucks, vacuum trucks, trailers

Recreational Use: Equestrian and walking trails, bike path southeast of site

Boat Launches: Direct river access, small skiff on river left or river right

ESI Shoreline Type: 1B Exposed, solid man-made structures; 3B Exposed, eroding banks in unconsolidated sediments; 8F Vegetated, steeply sloping bluffs; 9B Vegetated low banks

Site Images



Upstream



Downstream



Straight Across

RR = River Right RL = River Left

Photo Date: 02/16/2018



Site Objectives: Boom to prevent oil from entering Carrier Canal and Rocky Point Weir and allow for collection of oil.

Implementation: Boom A: Deploy 600 ft. of containment boom upstream from Rocky Point Weir at an angle to prevent entrainment, utilizing trees as existing anchor points or using anchoring stakes. Oil collection will be on river left. Boom B: Deploy 400 ft. of containment boom as secondary containment to protect Rocky Point Weir. Boom C: Deploy 200 ft. of containment boom across entrance to Carrier Canal to prevent oil from entering the canal.

Staging Area Location and Capabilities/Amenities/Waste Management: Direct river access for small skiff on river left or right. Limited room for staging boom trucks, trailer, vacuum trucks and temporary storage tanks on river left. Room for decontamination. Larger staging location available along lease roads. No electricity and no restrooms onsite.

Response Strategy Map (overview)

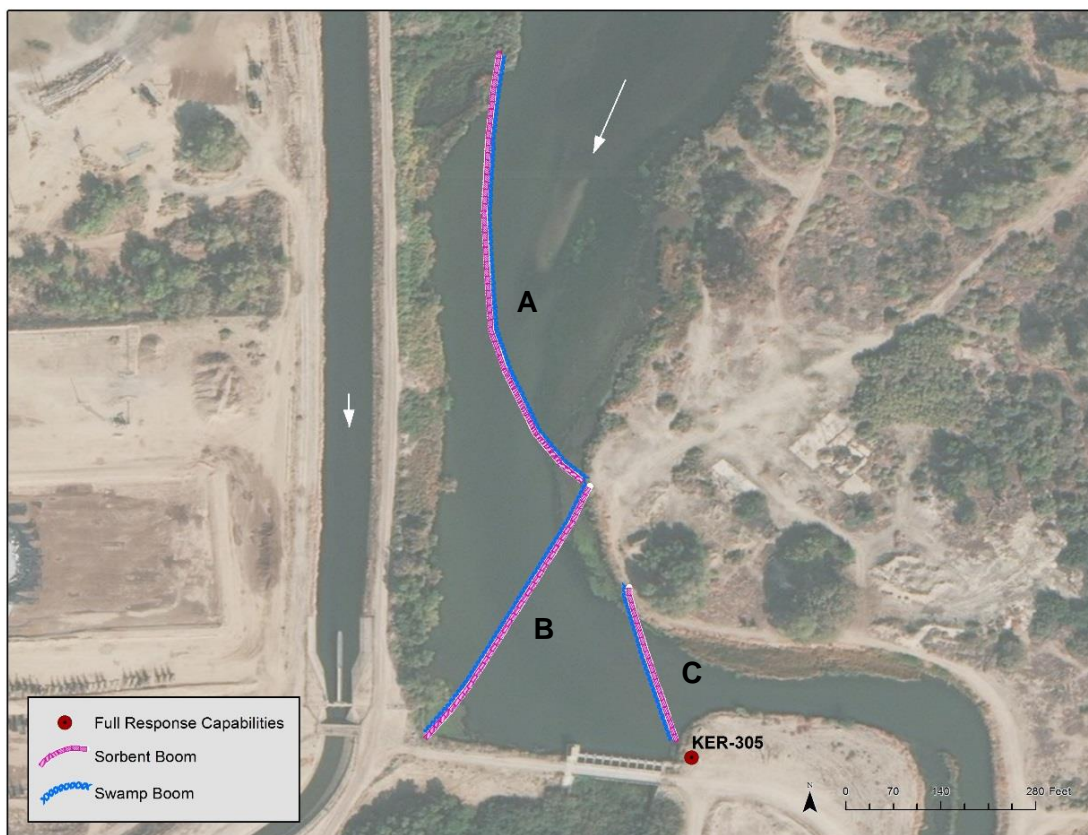


Table of Response Resources

Type	Sub-Type	Size	Unit	QTY - Unit	Special Equipment or Comments
Boom	Swamp	12	Inch	1200 ft.	Booming strategy only effective during medium to low flow. Boom A = 600-feet, Boom B = 400-feet, Boom C = 200-feet.
Boom	Sorbent	5 or 8	Inch	1200 ft.	5 inches for light oiling, 8 inches for heavier oiling. Boom A = 600-feet, Boom B = 400-feet, Boom C = 200-feet.
Stakes	Anchoring			18	3 stakes for each end of boom. Any boom with a "J" in its shape would require an additional stake. Recommend angled iron beams.
Anchors	Danforth	40	lb	4	Midstream anchoring for Boom A, B and C
Skimmer	Drum				Number will vary depending on response.
Boat	Small Skiff			1	Only necessary if river currents and water levels are optimal for launching a skiff to deploy boom.
Personnel				8	4 boat crew and 4 shoreside personnel.