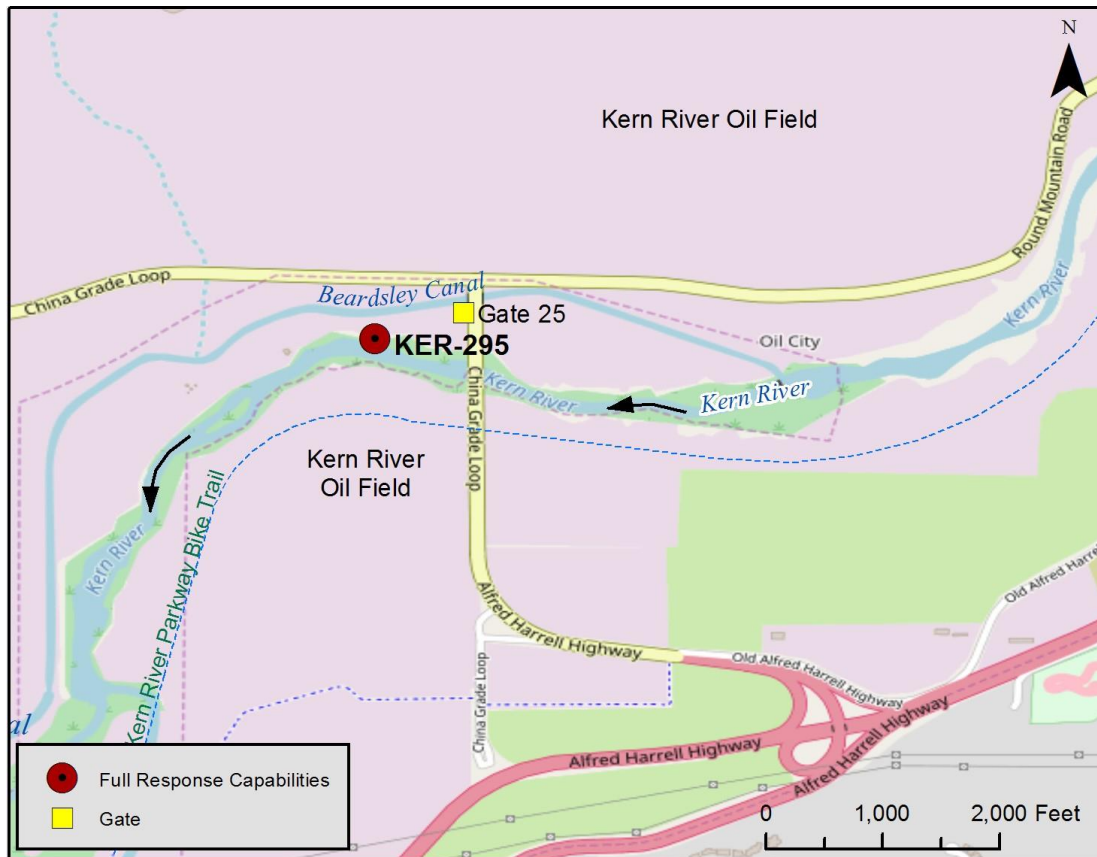




<b>Latitude:</b> 35.42640 <b>Longitude:</b> -118.97011	<b>Driving Directions</b>
<b>Highway Postmile:</b> N/A	<p><b>From the North:</b> Highway 99 South to Merle Haggard/7<sup>th</sup> Standard exit. Turn left and head east on Merle Haggard Drive. Turn right at Airport Drive and then left onto China Grade Loop. Stay on China Grade Loop for approximately 4 miles. Turn right to stay on China Grade Loop then turn right into Gate 25. Drive south towards river's edge (river right).</p> <p><b>From the South:</b> Highway 99 North to Merle Haggard/7<sup>th</sup> Standard exit. Turn right and head east on Merle Haggard Drive. Turn right at Airport Drive and then left onto China Grade Loop. Stay on China Grade Loop for approximately 4 miles. Turn right to stay on China Grade Loop then turn right into Gate 25. Drive south towards river's edge (river right).</p>
<b>Railroad Milepost:</b> N/A	
<b>Nearest Address and Thomas Guide #:</b> 1607 China Grade Loop Bakersfield, CA 93308	
<b>Cell Service:</b> Yes, Verizon	

### Overview Street Map



### Hazards, Restrictions and Advice for Responders

- Swift water during winter and spring flows
- Active oil field operations, watch for equipment operators and vehicles, flame resistant clothing recommended
- Locked gates
- Stinging nettle potentially growing on bank
- Rattlesnakes
- Weir with multiple canal gates
- Multiple pipe crossings 0.3 miles upstream

### Resources-At-Risk

**Ecological:** Western Pond Turtle, San Joaquin kit fox, Bakersfield cactus, Panorama Vista Preserve. Riparian habitat supports sensitive plant and animal communities including migratory birds and raptors.

**Economic:** Rocky Point Weir water intake and Carrier Canal water intake 0.8 miles downstream

**Tribal:** Contact the Native American Heritage Commission at (916) 373-3710.

**Cultural and Historic:** Contact the Southern San Joaquin Valley Information Center Information Center at (661) 654-2289.



## Site Description and Field Notes

**River Width:** 85 meters  
(279 feet)

**Gradient:** Medium

**Site Contact/s:**

Chevron Security  
(661) 392-2425

City of Bakersfield Water  
Resources  
(661) 326-3716

**Site Location/Segment:** KER-KN-I-010

This site is located within Chevron North American Exploration and Production Company's active oil field within the Kern River Oil Field. Multiple dirt access roads are present and often wind around active pumping units. Access river left by taking China Grade Loop south over the river and enter Gate 10. Continue west until you reach access road on the right to reach river's edge (river left). Chevron security would need to be contacted to enter property.

**Vehicular Access:** Passenger vehicles, small trucks, vacuum trucks, trailers

**Recreational Use:** N/A

**Boat Launches:** Direct river access, small skiff on river left or river right

**ESI Shoreline Type:** 3B Exposed, eroding banks in unconsolidated sediments; 6B Riprap; 8F Vegetated, steeply-sloping bluffs; 9B Vegetated low banks

## Site Images



Upstream



Downstream



Straight Across

RR = River Right RL = River Left

Photo Date: 06/07/2017



**Site Objectives:** Boom to prevent oil from entering Rocky Point Weir and Carrier Canal and allow for collection of oil.

**Implementation:** Deploy 600 ft. of containment boom at an angle to prevent entrainment, utilizing trees as existing anchor points or using anchoring stakes. Oil collection will be on river right upstream from the deployment boom.

**Staging Area Location and Capabilities/Amenities/Waste Management:** Direct river access for small skiff on river left or right. Limited room for staging boom trucks, trailer, vacuum trucks and temporary storage tanks. Room for decontamination. Larger staging locations along west side of China Grade Loop.

### Response Strategy Map (overview)

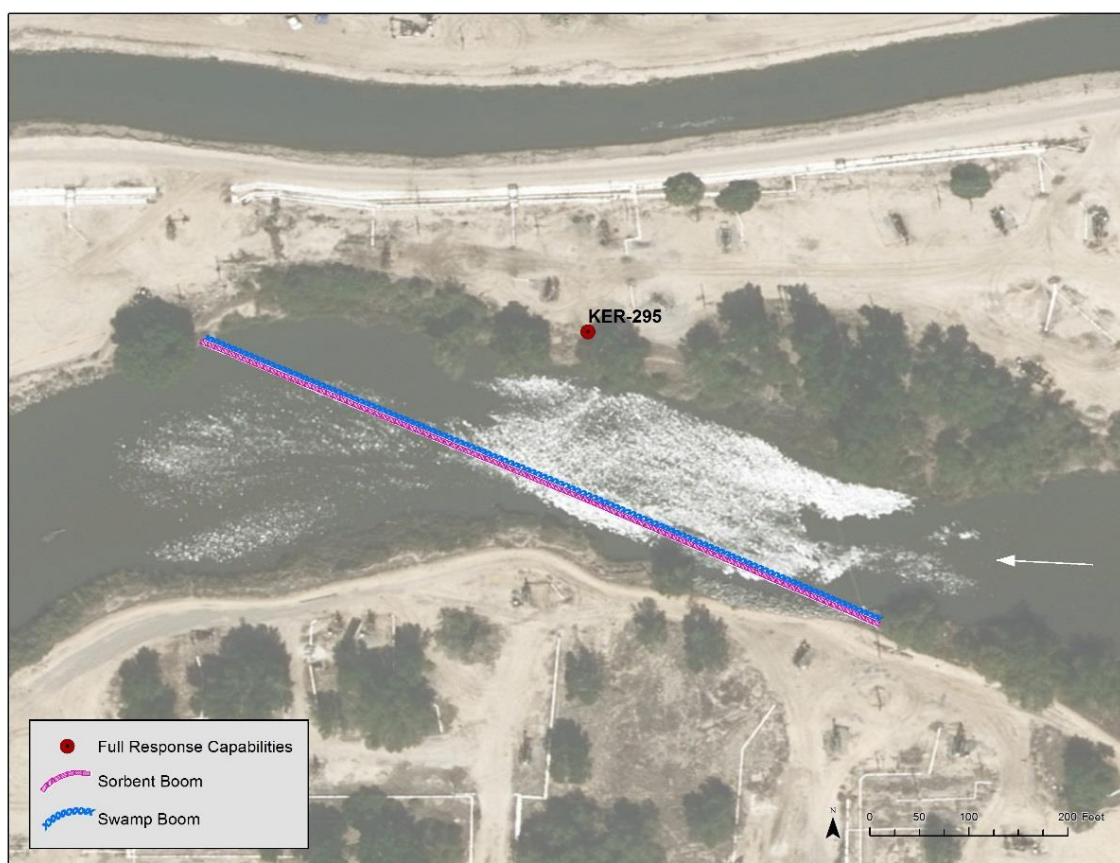


Table of Response Resources

Type	Sub-Type	Size	Unit	QTY - Unit	Special Equipment or Comments
Boom	Swamp	12	Inch	600 ft.	Booming strategy only effective during medium to low flow
Boom	Sorbent	5 or 8	Inch	600 ft.	5 inches for light oiling, 8 inches for heavier oiling
Stakes	Anchoring			6	6 stakes per boom, 3 on either end. Any boom with a "J" in its shape would require an additional stake. Recommend angled iron beams.
Anchors	Danforth	40	lb	2	Midstream anchoring.
Skimmer	Drum				Number will vary depending on response.
Boat	Small Skiff			1	Only necessary if river currents and water levels are optimal for launching a skiff to deploy boom.
Personnel				8	4 boat crew and 4 shoreside personnel.