

**Latitude:** 35.42556  
**Longitude:** -118.96042

### Driving Directions

**Highway Postmile:** N/A

**From the North:** Highway 99 South to Merle Haggard/7<sup>th</sup> Standard exit. Turn left and head east on Merle Haggard Drive. Turn right at Airport Drive and then left onto China Grade Loop. Stay on China Grade Loop for approximately 4.4 miles to Gate 27. Turn right to enter dirt road and drive south towards river's edge (river right).

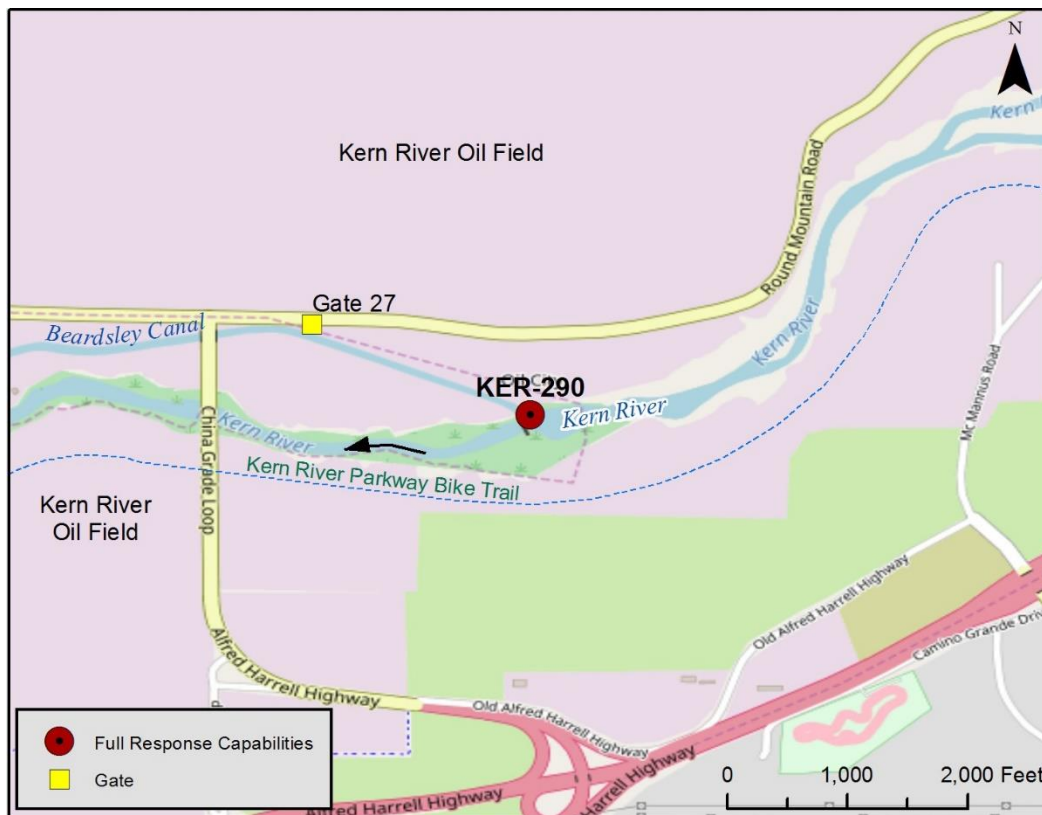
**Railroad Milepost:** N/A

**Nearest Address and Thomas Guide #:**  
1607 China Grade Loop  
Bakersfield, CA 93308

**From the South:** Highway 99 North to Merle Haggard/7<sup>th</sup> Standard exit. Turn right and head east on Merle Haggard Drive. Turn right at Airport Drive and then left onto China Grade Loop. Stay on China Grade Loop for approximately 4.4 miles to Gate 27. Turn right to enter dirt road and drive south towards river's edge (river right).

**Cell Service:** Yes, Verizon

### Overview Street Map



### Hazards, Restrictions and Advice for Responders

- Swift water during winter and spring flows
- Active oil field operations, watch for equipment operators and vehicles, flame resistant clothing recommended
- Locked gates
- Stinging nettle potentially growing on bank
- Rattlesnakes
- Weir with multiple canal gates

### Resources-At-Risk

**Ecological:** Western Pond Turtle, San Joaquin kit fox, Bakersfield cactus. Riparian habitat supports sensitive plant and animal communities including migratory birds and raptors.

**Economic:** Water intake at Beardsley Canal

**Tribal:** Contact the Native American Heritage Commission at (916) 373-3710.

**Cultural and Historic:** Contact the Southern San Joaquin Valley Information Center at (661) 654-2289.



## Site Description and Field Notes

**River Width:** 130 meters  
(426 feet)

**Gradient:** Low

**Site Contact/s:**

Chevron Security  
(661) 392-2425

City of Bakersfield Water  
Resources  
(661) 326-3716

**Site Location/Segment:** KER-KN-I-010

This site is located within Chevron North American Exploration and Production Company's active oil field within the Kern River Oil Field. Multiple dirt access roads are present and often wind around active pumping units. Access to river left is by taking China Grade Loop south over the river and entering Gate 8 on the left side of the road. Follow the road east to river's edge (river left). Chevron security would need to be contacted to enter property.

**Vehicular Access:** Passenger vehicles, small trucks, vacuum trucks, trailers

**Recreational Use:** N/A

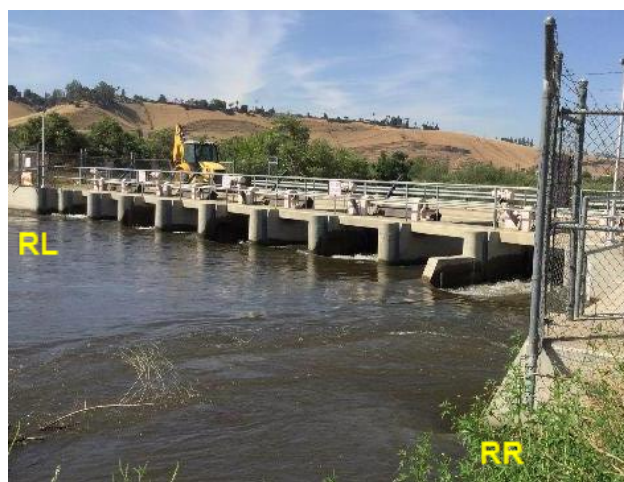
**Boat Launches:** Direct river access, small skiff on river left or river right

**ESI Shoreline Type:** 1B Exposed, solid man-made structures; 3B Exposed, eroding banks in unconsolidated sediments; 6B Riprap; 8F Vegetated, steeply-sloping bluffs; 9B Vegetated low banks

## Site Images



Upstream



Downstream



Straight Across

RR = River Right RL = River Left

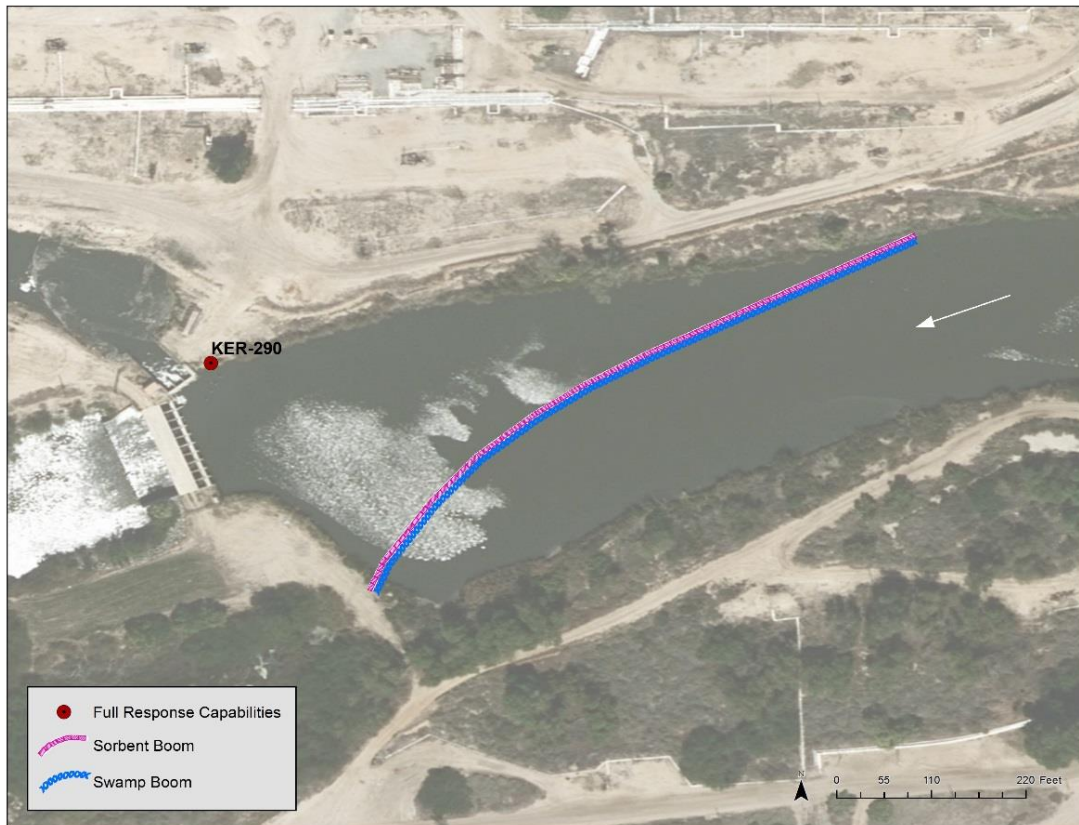
Photo Date: 06/07/2017

**Site Objectives:** Boom to prevent oil from entering Beardsley Canal and Weir and allow for collection of oil.

**Implementation:** Deploy 600 ft. of containment boom upstream from the Beardsley Weir at an angle to prevent entrainment, utilizing trees as existing anchor points or using anchoring stakes. Oil collection will be on river left.

**Staging Area Location and Capabilities/Amenities/Waste Management:** Direct river access for small skiff on river left or right. Limited room for staging boom trucks, trailer, vacuum trucks and temporary storage tanks. Room for decontamination. Larger staging location available along lease road just south of Round Mountain Road. No electricity and no restrooms onsite.

### Response Strategy Map (overview)



**Table of Response Resources**

Type	Sub-Type	Size	Unit	QTY - Unit	Special Equipment or Comments
Boom	Swamp	12	Inch	600 ft.	Booming strategy only effective during medium to low flow
Boom	Sorbent	5 or 8	Inch	600 ft.	5 inches for light oiling, 8 inches for heavier oiling
Stakes	Anchoring			6	6 stakes per boom, 3 on either end. Any boom with a "J" in its shape would require an additional stake. Recommend angled iron beams.
Anchors	Danforth	40	lb	2	Midstream anchoring.
Skimmer	Drum				Number will vary depending on response.
Boat	Small Skiff			1	Only necessary if river currents and water levels are optimal for launching a skiff to deploy boom.
Personnel				8	4 boat crew and 4 shoreside personnel.