

Latitude: 35.44658
Longitude: -118.92263

Driving Directions

Highway Post Mile: N/A

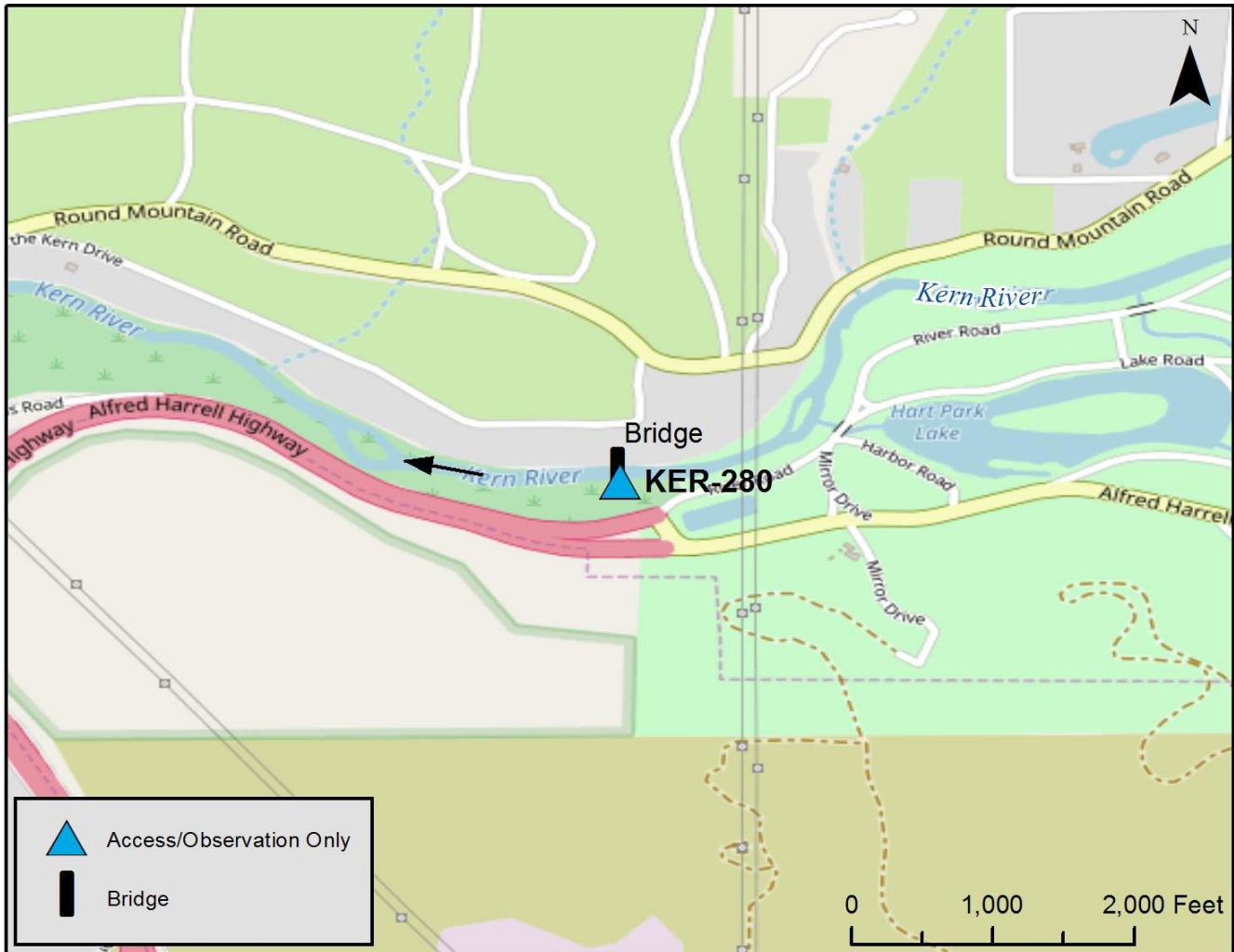
Railroad Milepost: N/A

Nearest Address and Thomas Guide #: N/A

Cell Service: Yes, Verizon

From the East: From Lake Isabella, take Highway 178 west toward Bakersfield. Turn right onto Alfred Harrell Highway, and follow until arriving at Hart Park. Proceed to the west entrance of Hart Park, and trail to the bridge will be on the north side of the park entrance.

From the West: From Bakersfield, take Alfred Harrell Highway to Hart Park. The trail head to the bridge will be on the north side of the park entrance, just inside the entrance gate.

Overview Street Map**Hazards, Restrictions and Advice for Responders**

- Swift water during winter and spring flows
- Steep cliffs
- Trip and fall hazards, slippery when wet
- Heavy public use
- Rattlesnakes

Site Description and Field Notes

Site Location/Segment: KER-KN-H-020

Should only be used as an observation site. Limited access to shoreline on upstream side of bridge, river left. Private residences border river on river right.

Site Contact/s: Kern County Parks and Recreation Larry Swan (General Services Manager) phone: (661) 868-7010 cell: (661) 343-5793; Kenneth Swift (Area Park Supervisor) phone: (661) 868-1612 cell: (661) 205-4851; Kern County Sherriff for after-hours notifications: (661) 861-3110; City of Bakersfield Water Resources (661) 326-3716.

Site Images



Upstream



Downstream



Entrance

RR = River Right RL = River Left

Photo Date: 02/16/2018