

Latitude: 35.43723

Longitude: -118.89365

Driving Directions

Highway Postmile: N/A

Railroad Milepost: N/A

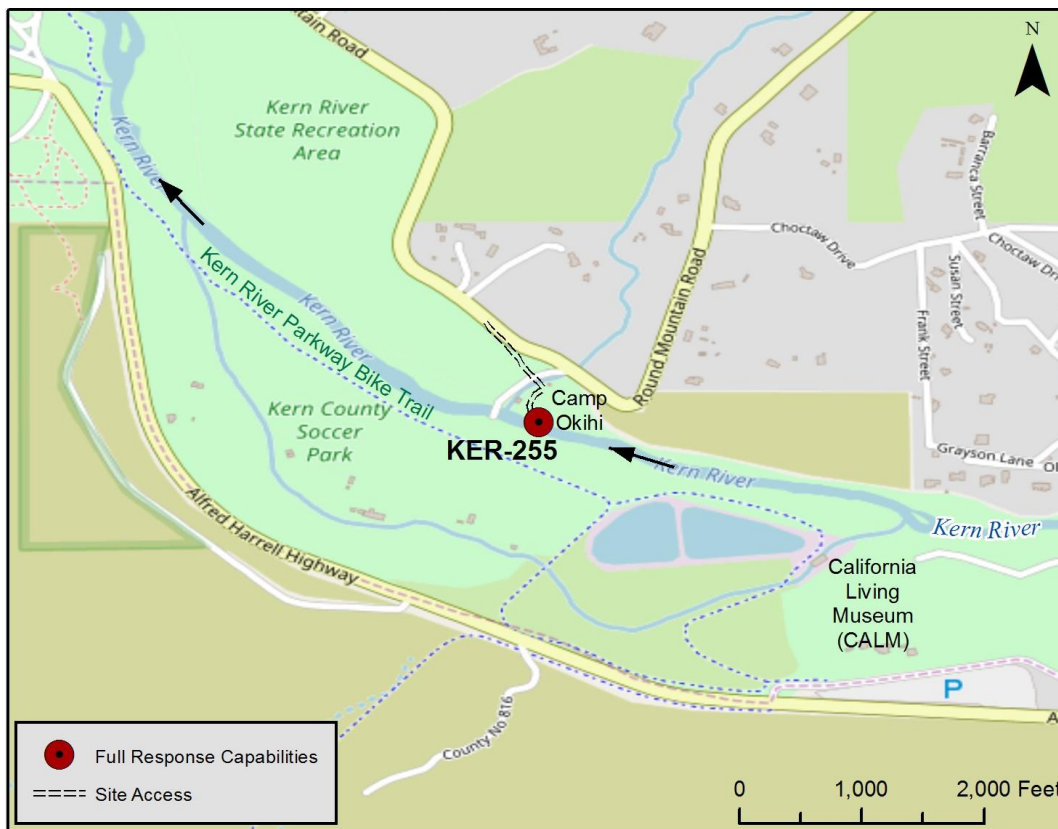
Nearest Address and Thomas Guide #:

13801 Round Mountain Road
Bakersfield, CA 93308

Cell Service: Yes, Verizon

From the North: Highway 99 South to Merle Haggard/7th Standard exit. Turn left and head east on Merle Haggard Drive. Turn right at Airport Drive and then left onto China Grade Loop. Stay on China Grade Loop to become Round Mountain Road. Turn right off the road at 13801 Round Mountain Road and follow the dirt road to the river's edge (river right).

From the South: Highway 99 North to Merle Haggard/7th Standard exit. Turn right and head east on Merle Haggard Drive. Turn right at Airport Drive and then left onto China Grade Loop. Stay on China Grade Loop to become Round Mountain Road. Turn right off the road at 13801 Round Mountain Road and follow the dirt road to the river's edge (river right).

Overview Street Map**Hazards, Restrictions and Advice for Responders**

- Swift water during winter and spring flows
- Public use with overnight campsites
- Watch for vehicle and foot traffic, especially during spring and summer months
- Steep banks
- Water intake for soccer fields 0.2 miles downstream on river left
- Potential for stinging nettle to be present along bank
- Rattlesnakes

Resources-At-Risk

Ecological: Western Pond Turtle, San Joaquin kit fox, Bakersfield cactus. Riparian habitat supports sensitive plant and animal communities including migratory birds and raptors.

Economic: Campgrounds, water intake for irrigation

Tribal: Contact the Native American Heritage Commission at (916) 373-3710.

Cultural and Historic: Contact the Southern San Joaquin Valley Information Center at (661) 654-2289.



Site Description and Field Notes

River Width:

31 meters (101 feet)

Gradient: Low

Site Contact/s:

City of Bakersfield Water Resources (661) 326-3716

Larry Swan, Kern County Parks and Recreation (661) 868 – 7010

After hours contact Sheriff dispatch at (661) 861 - 3110

Site Location/Segment: KER-KN-H-005

This site is located at the Camp Okihi campgrounds, which are managed by Kern County Parks and Recreation. Access to river left is possible on the bike path at the CALM Zoo parking lot and following behind the soccer fields. Banks are slightly steep on both sides with limited access on river left. Follow walking trail off the bike path to access river left.

Vehicular Access: Passenger vehicles, small trucks, vacuum trucks, trailers**Recreational Use:** Human contact, recreational fishing, camping, tubing**Boat Launches:** Direct river access, small skiff only from bank at river right**ESI Shoreline Type:** 1A Exposed rocky bank/shore; 8F Vegetated, steeply-sloping bluffs; 9B Vegetated low banks

Site Images



Upstream



Downstream



Straight Across

RR = River Right RL = River Left

Photo Date: 11/30/2017



Site Objectives: Boom to prevent further movement of oil and allow for collection of oil.

Implementation: Deploy 400 ft. of containment boom upstream at an angle to prevent entrainment, utilizing trees as existing anchor points or using anchoring stakes. Oil collection will be on river right.

Staging Area Location and Capabilities/Amenities/Waste Management: Staging for boom trucks, trailer, vacuum trucks and temporary storage tanks – would need the county's permission. Room for decontamination. Electricity and portable restrooms onsite.

Response Strategy Map (overview)

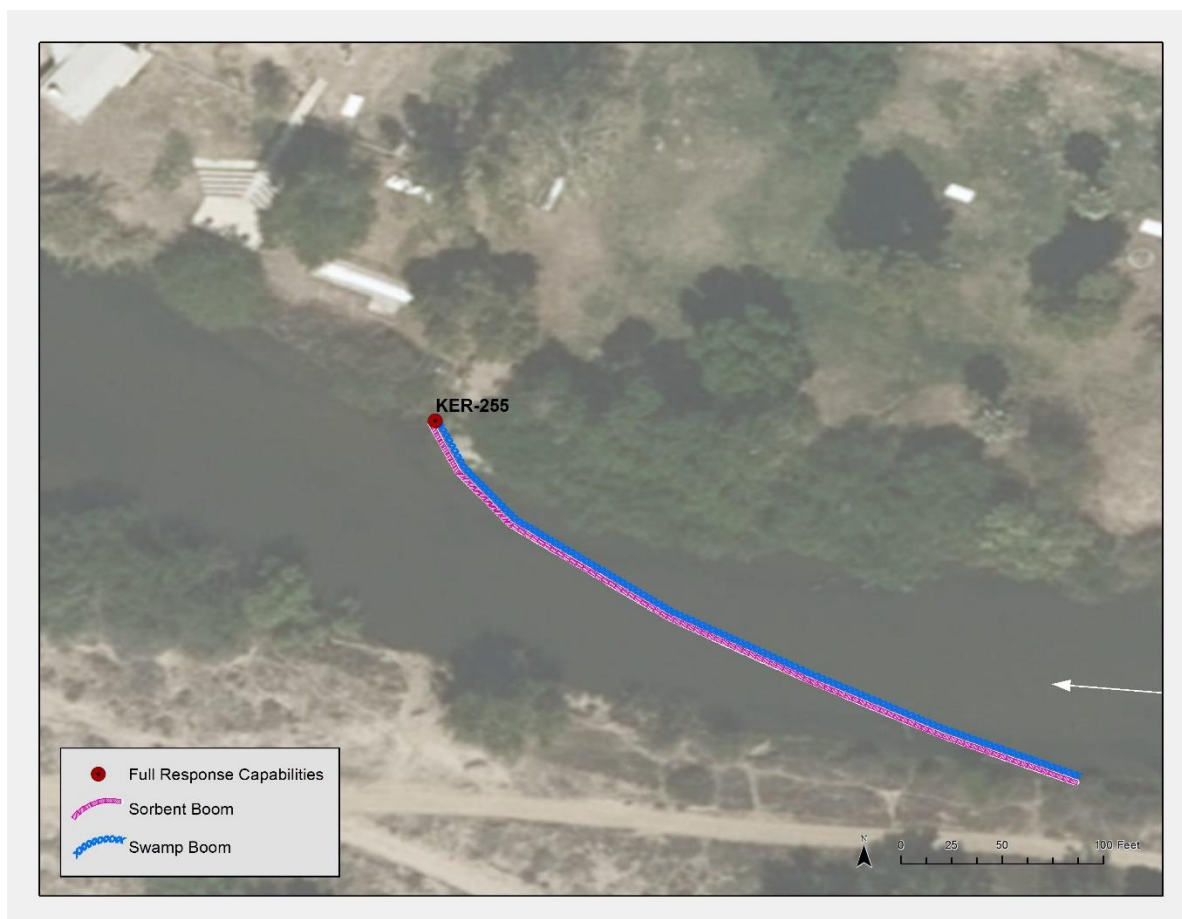


Table of Response Resources

| Type | Sub-Type | Size | Unit | QTY - Unit | Special Equipment or Comments |
|-----------|-------------|--------|------|------------|--|
| Boom | Swamp | 12 | Inch | 400 ft. | Booming strategy only effective during medium to low flow |
| Boom | Sorbent | 5 or 8 | Inch | 400 ft. | 5 inches for light oiling, 8 inches for heavier oiling |
| Stakes | Anchoring | | | 6 | 6 stakes per boom, 3 on either end. Any boom with a "J" in its shape would require an additional stake. Recommend angled iron beams. |
| Anchors | Danforth | 40 | lb | 2 | Midstream anchoring. |
| Skimmer | Drum | | | | Number will vary depending on response. |
| Boat | Small Skiff | | | 1 | Only necessary if river currents and water levels are optimal for launching a skiff to deploy boom. |
| Personnel | | | | 8 | 4 boat crew and 4 shoreside personnel. |