

Latitude: 35.44345

Longitude: -118.85157

## Driving Directions

Highway Postmile: KER R10.963

Railroad Milepost: N/A

Nearest Address and Thomas Guide #:

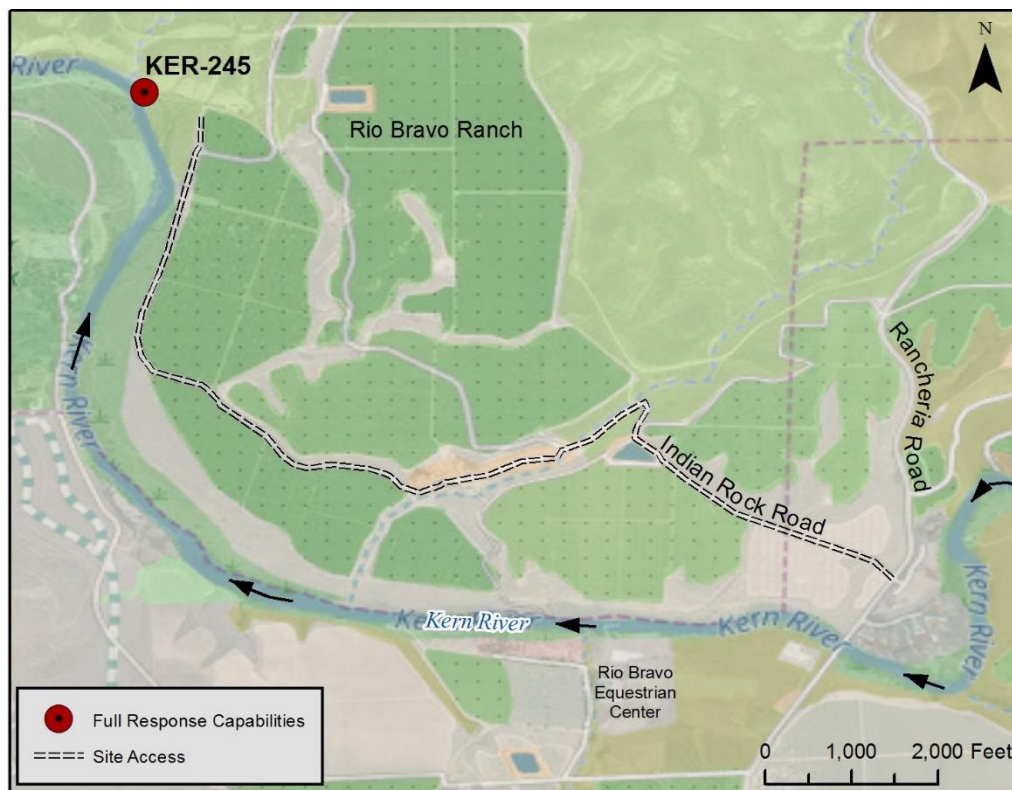
15701 CA Highway 178  
Bakersfield, CA 93306

Cell Service: Yes, Verizon

**From the North:** Highway 99 South to Highway 178 East, turn left onto Rancheria Road for approximately 8/10s of a mile. Turn left onto Indian Rock Road (dirt) and follow road. Turn right at the agricultural pond and then a sharp left. Continue through equipment yard until you reach the western extent of the orchards. Follow along the western edge of the orchards in a northern direction until you reach a cattle gate on the left side of the road. Access through gate to river's edge (river right).

**From the South:** Highway 99 North to Highway 178 East, turn left onto Rancheria Road for approximately 8/10s of a mile. Turn left onto Indian Rock Road (dirt) and follow road. Turn right at the agricultural pond and then a sharp left. Continue through equipment yard until you reach the western extent of the orchards. Follow along the western edge of the orchards in a northern direction until you reach a cattle gate on the left side of the road. Access through gate to river's edge (river right).

## Overview Street Map



## Hazards, Restrictions and Advice for Responders

- Swift water during winter and spring flows
- Private property, must access Rio Bravo property through locked gate
- Be aware of ranch employees and traffic on the property
- Cattle present
- During spring and summer months, rafting company removes rafts/rafters from this location
- Stinging nettle potentially growing on banks
- Rattlesnakes

## Resources-At-Risk

**Ecological:** Western Pond Turtle, San Joaquin kit fox, Bakersfield cactus. Riparian habitat supports sensitive plant and animal communities including migratory birds and raptors.

**Economic:** River's End River Rafting (661) 326-7003

**Tribal:** Contact the Native American Heritage Commission at (916) 373-3710.

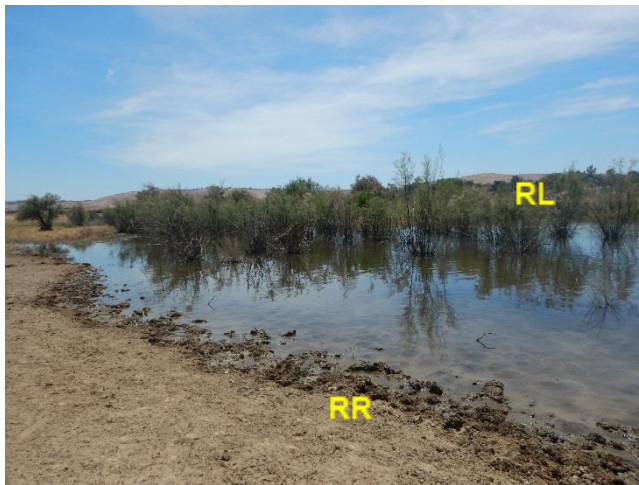
**Cultural and Historic:** Contact the Southern San Joaquin Valley Information Center Information Center at (661) 654-2289.



### Site Description and Field Notes

<b>River Width:</b>	<b>Site Location/Segment: KER-KN-H-005</b>  This location is where the River's End Rafting company unloads rafts and rafters during spring and summer months. Access to the river right is along several dirt agricultural roads within the Rio Bravo Ranch, Nickel Family, LLC property. If gate is locked, site contact would need to unlock. Access to river left not ideal with thick vegetation. Could access river left using a small skiff.  <b>Vehicular Access:</b> Passenger vehicles, small trucks, vacuum trucks, trailers  <b>Recreational Use:</b> Rafting, tubing  <b>Boat Launches:</b> Direct river access, shallow boat launch for small skiff (river right)  <b>ESI Shoreline Type:</b> 1A Exposed rocky bank/shore; 8F Vegetated, steeply-sloping bluffs; 9B Vegetated low banks
70 meters (229 feet)	
<b>Gradient:</b> Low	
<b>Site Contact/s:</b>  Jeff Siemens, Rio Bravo Ranch, Nickel Family, LLC Mobile: (661) 364-3010  City of Bakersfield Water Resources (661) 326-3716	

### Site Images



Upstream



Downstream



Straight Across

RR = River Right RL = River Left

Photo Date: 05/03/2017



**Site Objectives:** Boom to prevent further movement of oil and allow for collection of oil.

**Implementation:** Deploy 400 ft. of containment boom upstream at an angle to prevent entrainment, utilizing trees as existing anchor points or using anchoring stakes. Oil collection will be on river right.

**Staging Area Location and Capabilities/Amenities/Waste Management:** Limited staging on river right. Boom trucks, trailer, vacuum trucks and temporary storage tanks could use the space, but it is limited. Access on river left by foot trail near Lake Ming overflow parking. Could access river right with a small skiff. Decontamination possible at site. No electricity or bathrooms available.

### Response Strategy Map (overview)

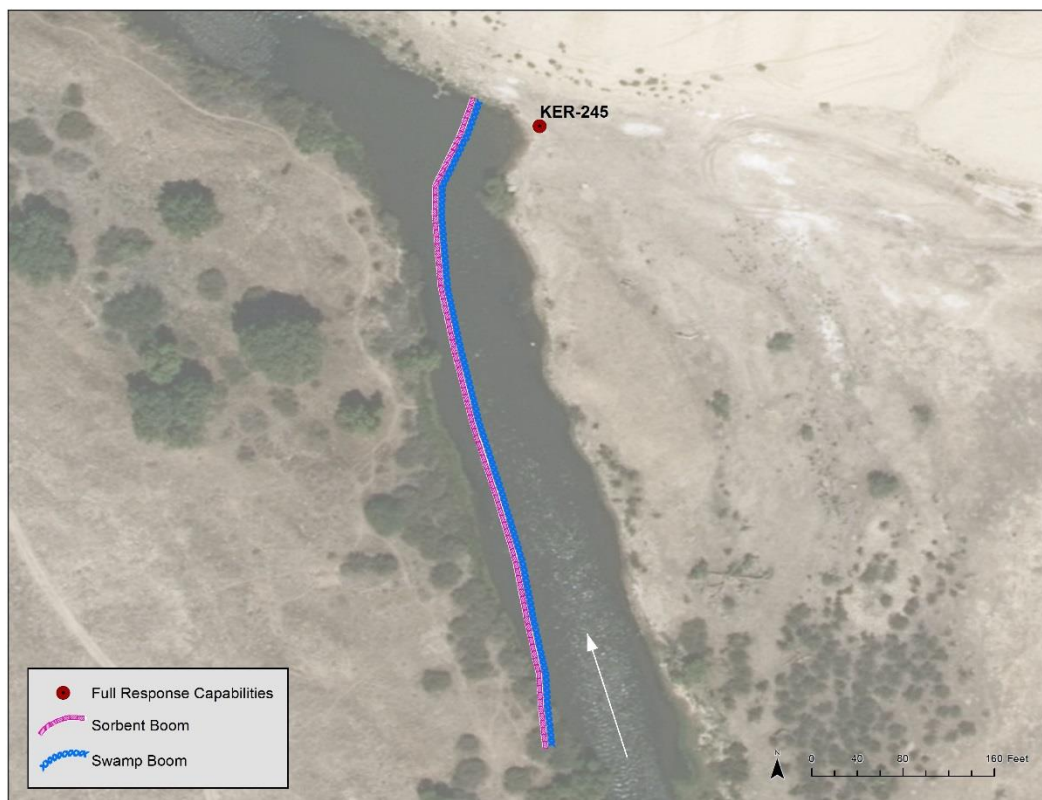


Table of Response Resources

Type	Sub-Type	Size	Unit	QTY - Unit	Special Equipment or Comments
Boom	Swamp	12	Inch	400 ft.	Booming strategy only effective during medium to low flow
Boom	Sorbent	5 or 8	Inch	400 ft.	5 inches for light oiling, 8 inches for heavier oiling
Stakes	Anchoring			6	6 stakes per boom, 3 on either end. Any boom with a "J" in its shape would require an additional stake. Recommend angled iron beams.
Anchors	Danforth	40	lb	2	Midstream anchoring.
Skimmer	Drum				Number will vary depending on response.
Boat	Small Skiff			1	Only necessary if river currents and water levels are optimal for launching a skiff to deploy boom.
Personnel				8	4 boat crew and 4 shoreside personnel.