

Latitude: 34.272167 Longitude: -117.466247	Driving Directions
Highway Post Mile: N/A	<p>From North I-15 exit Cleghorn Rd., turn left (west) under the freeway. Travel 1.75 miles turn right onto Swarthout Canyon Road. Cross two sets of RR tracks. Travel straight on dirt road .35 miles destination is on the right. Lost Lake parking lot.</p> <p>From South I-15 exit Cleghorn Rd., turn right. Travel 1.75 miles turn right onto Swarthout Canyon Road. Cross two sets of RR tracks. Travel straight on dirt road .35 miles destination is on the right. Lost Lake parking lot.</p>
Railroad Milepost: N/A	
Nearest Address and Thomas Guide #: 4734 E-6	
Cell Service: Yes	

Overview Street Map



Hazards, Restrictions and Advice for Responders

- Locked gate for parking area
- Moderate sloped access
- Strategy will depend on prevention into the lake or control strategies on the lake
- Rattlesnakes

Resources-At-Risk (Site and Downstream)

Ecological: Least Bell's Vireo, Bell's Sage Sparrow, Coastal Whiptail, white-bracted spineflower, short-joint beavertail

Economic: N/A

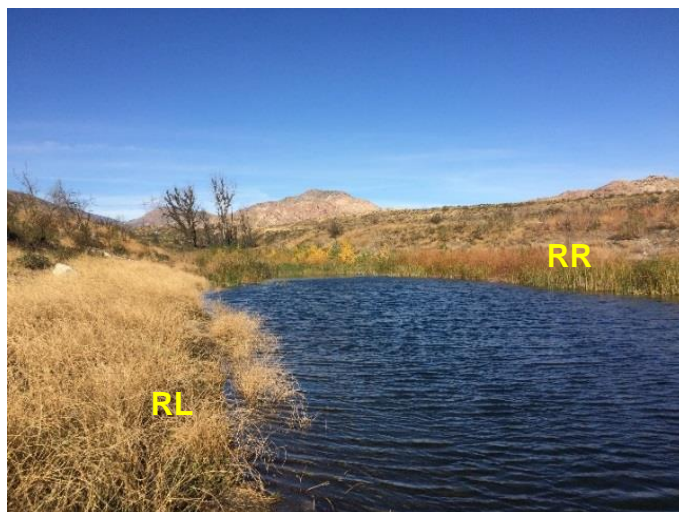
Tribal: Contact the Native American Heritage Commission at (916) 373-3710.

Cultural and Historic: Contact the Southwest Information Center at (657) 278-5395.

Site Description and Field Notes

River Width: 75 Meters (246 feet)	Site Location/Segment: CAJ-SR-B-003 There is a small dirt parking lot with primitive restroom facilities. There is a locked gate into the parking lot. Access to the lake is over a small hill.
Gradient: Low Slow	
Site Contact/s: USFS – (909) 382-2600	
	Vehicular Access: 4WD Pick-Up Recreational Use: N/A Boat Launches: N/A
	ESI Shoreline Type: 3A Fine to medium-grained sand; 9B Vegetated low banks; 10B Freshwater marshes

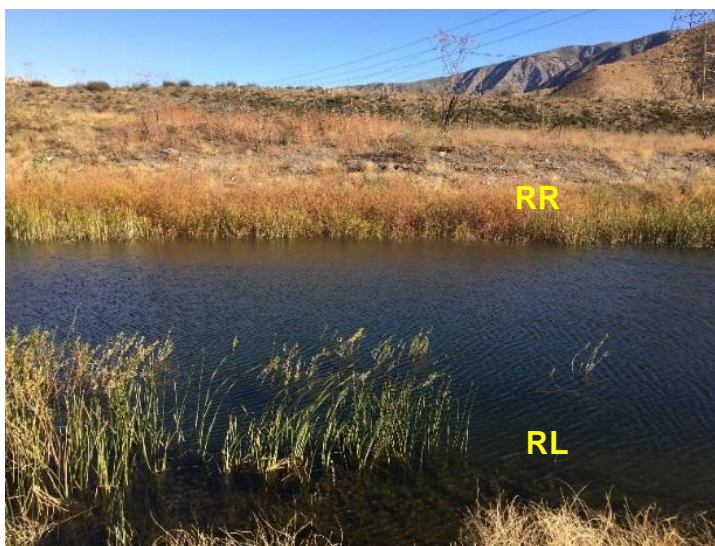
Site Images



Upstream



Downstream



Straight Across

RR = River Right RL = River Left

Photo Date: 12/28/2017

Site Objectives: Earthen berm/underflow dam to prevent flow of oil into the lake. Boom to prevent further movement of oil in the Lake.

Implementation: Minimize ingress and egress routes through vegetation to prevent erosion and disturbance of the surrounding ecosystem. Weather and water flows will determine specific site strategies. Width of lake is narrow enough to walk on either side to deploy boom.

Staging Area Location and Capabilities/Amenities/Waste Management: Use dirt parking lot.

Response Strategy Map (overview)

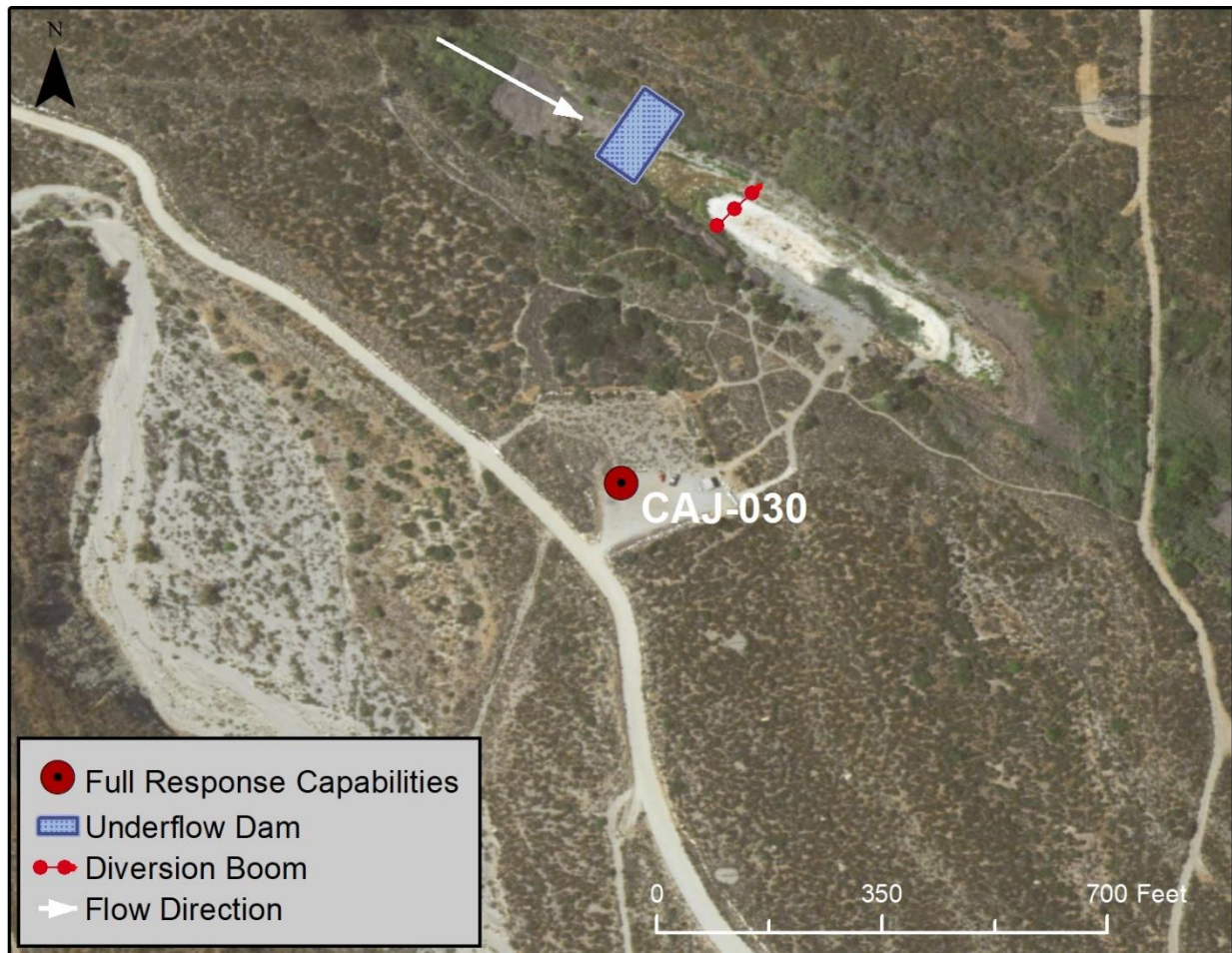


Table of Response Resources

Type	Sub-Type	Size	Unit	QTY - Unit	Special Equipment or Comments
Boom	Harbor	18-24	Inch	150 feet	
Backhoe					For earthen berm/underflow dam
Piping					For earthen berm/underflow dam