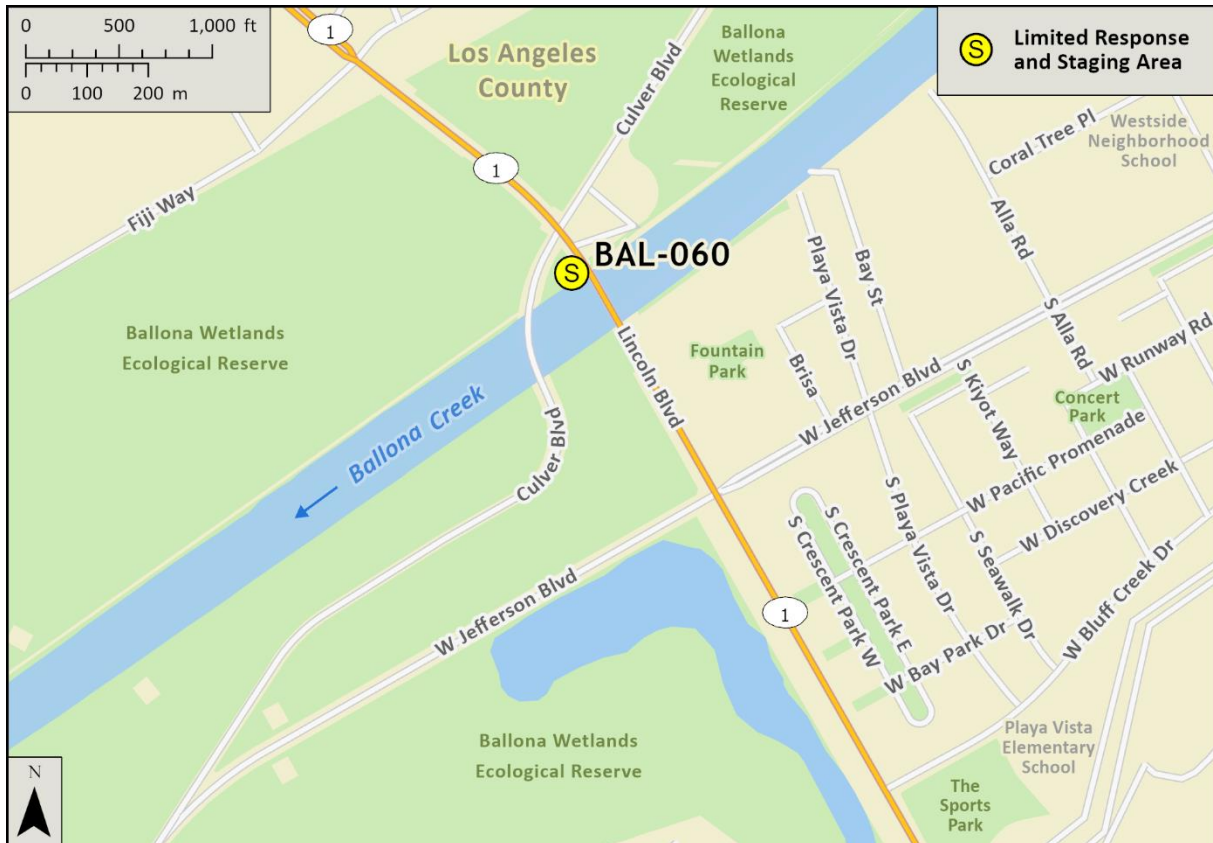


Driving Directions:	<p>From the South (Long Beach): I-405 North to CA-90 West turn left onto Lincoln and continue to Ballona Creek.</p> <p>From the North (Ventura): US-101 South to I-405 South to CA-90 West turn left onto Lincoln and continue to Ballona Creek.</p>		
Latitude: 33.97534 Longitude: -118.43280	Highway Postmile: N/A	Railroad Milepost: N/A	Cell Service: Yes

Nearest Address: 4750 Admiralty Way, Marina Del Rey, CA 90292

Overview Street Map



Hazards, Restrictions and Advice for Responders

- Dangerous swift water after rainfall
- Unhoused encampments
- Steep banks
- Vehicle/bike traffic

Resources-At-Risk

Ecological: California Least Tern, Belding's Savannah Sparrow, Burrowing Owl, Coastal California Gnatcatcher, Least Bell's Vireo, Light-footed Ridgway's Rail, Least Bittern, Pallid Bat, South Coast Marsh Vole, Western Mastiff Bat, Silvery Legless Lizard, El Segundo Blue Butterfly, Nuttall's Scrub Oak, Orcutt's Pincushion, Southern Tarplant

Economic: UCLA Marina Aquatic Center

Tribal: Contact the Native American Heritage Commission at (916) 373-3710.

Cultural and Historic: Contact the South Central Coastal Information Center at (657) 278-5395.

Site Description and Field Notes

Site Location/Segment: BAL-LA-C-010	Site Description and Field Notes: Limited staging on both sides of the creek. Boom trucks, trailer, vacuum trucks and temporary storage tanks could use the space but it is limited and narrow. Observations can be made from the Lincoln Blvd. bridge. Personnel access to the channel bottom from the bike path by walking down the sloped bank.			
Gradient: Low	River Width: 80 meters (264 feet)	Vehicular Access: Passenger vehicles, small trucks, and small trailers	Recreational Use: N/A	Boat Launches: N/A
Site Contact/s:	LA County Public Works (800) 675-4357 27/7 (562) 861-0316 (626) 458-4357 After Hours		Richard Brody, CDFW Region 5 Ballona Wetlands Ecological Reserve (310) 455-3243	
ESI Shoreline Type:	1B Exposed, solid man-made structure			

Site Images

Upstream



Downstream



Straight Across



Entrance



RR = River Right RL = River Left

Photo Date: 3/27/2017

Site Objectives: Boom to prevent further movement of oil and allow for collection of oil.

Implementation: Deploy boom on upstream side of road crossing to consist of 600 ft. of containment boom with a minimum of a 45-degree angle. Use a leader rope on the boom and walk leader rope across the bridge. Pull the leader rope across the creek with boom attached.

Staging Area Location and Capabilities/Amenities/Waste Management: Limited on both sides of the creek. Boom trucks, trailer, vacuum trucks and Baker tanks could use the space but it is limited and narrow.

Response Strategy Map (overview)

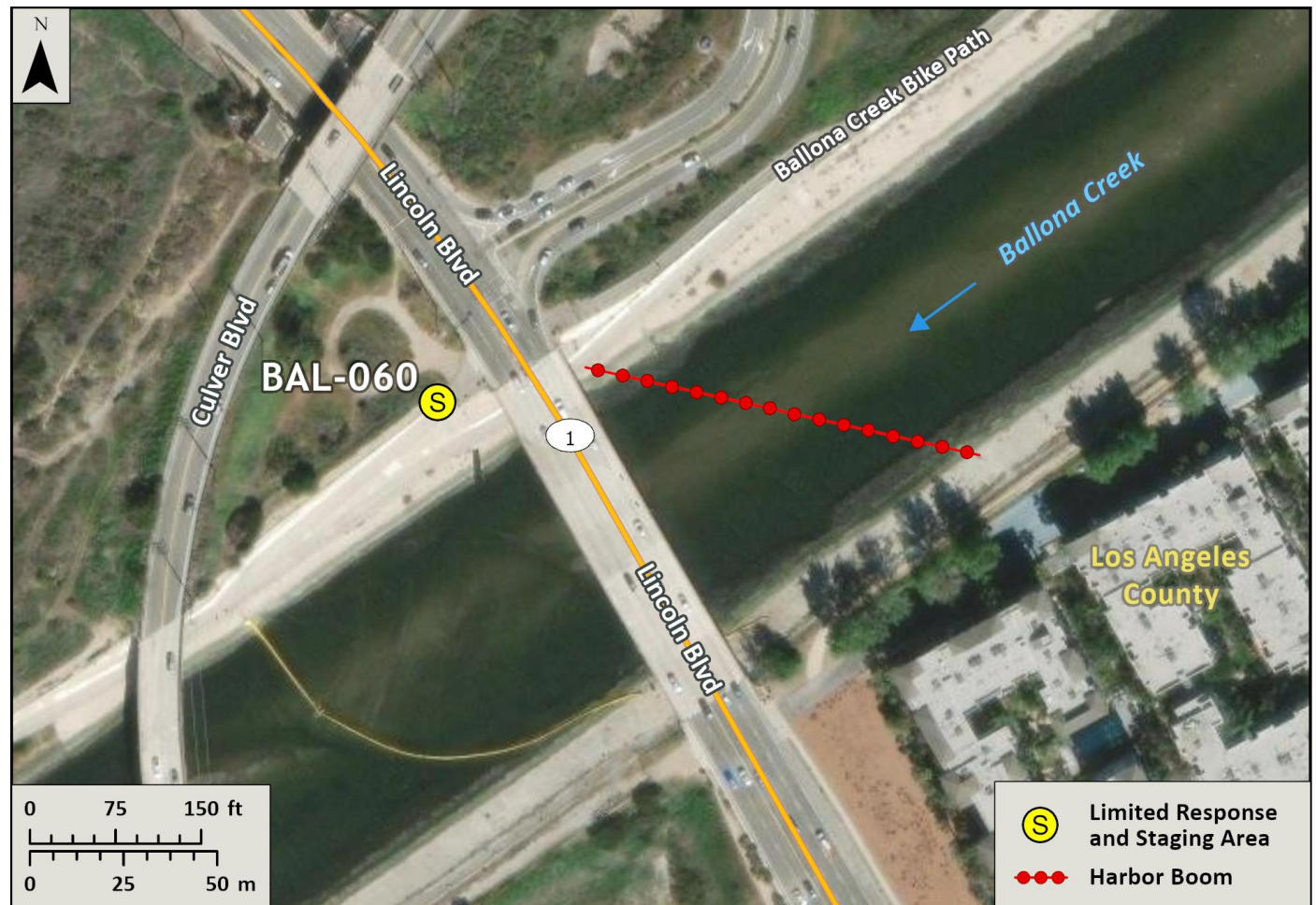


Table of Response Resources

Type	Sub-Type	Size	Unit	Quantity	Special Equipment or Comments
Boom	Harbor	18 or 24 in. skirt	Feet	600	
Rope			Feet	600	
Personnel			Crew	4	