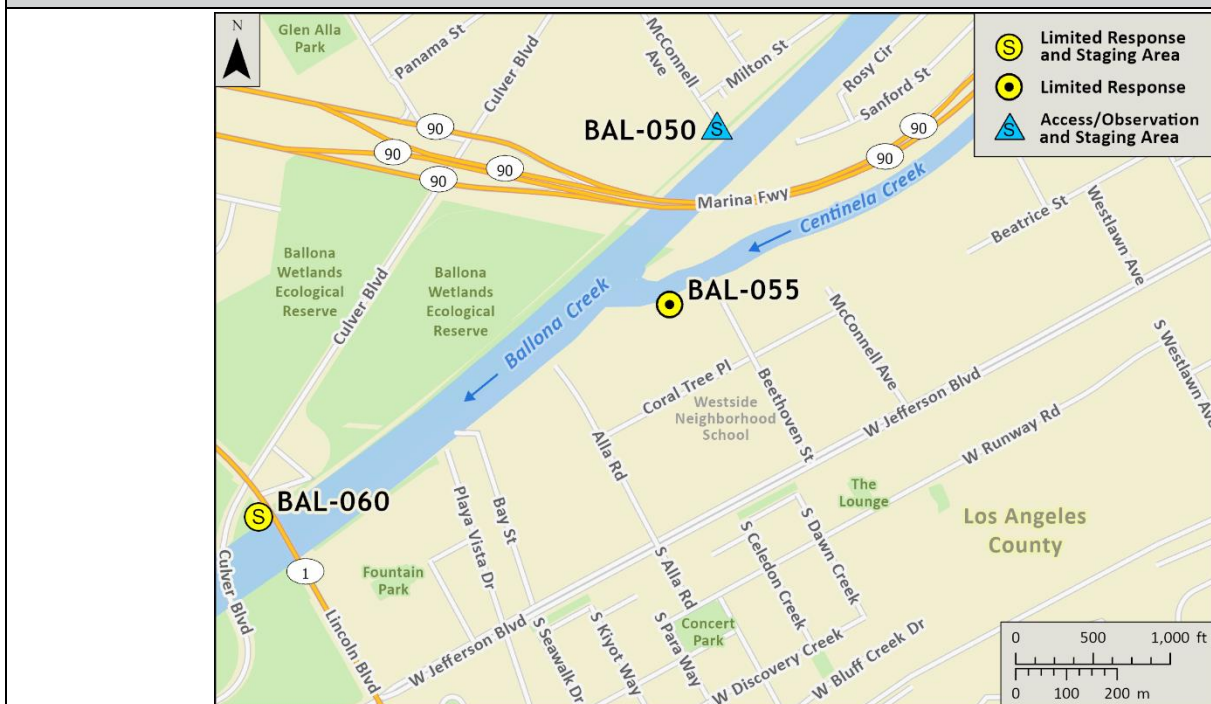


Driving Directions:	<p>From the South (Long Beach): I-405 North to Jefferson Blvd., head south on Jefferson Blvd. and turn right onto Beethoven St. to Centinela Creek.</p> <p>From the North (Ventura): US-101 South to I-405 South to Jefferson Blvd., head south on Jefferson Blvd. and turn right onto Beethoven St. to Centinela Creek.</p> <p>For physical access enter from Hammock St alleyway: Head back north on Jefferson Blvd., turn left and go north on South Centinela Ave., turn left onto Hammock St., the alleyway is the first right.</p>		
Latitude: 33.97901 Longitude: -118.42397	Highway Postmile: N/A	Railroad Milepost: N/A	Cell Service: Yes

Nearest Address: 5301 Beethoven St., Los Angeles, CA 90066

Overview Street Map



Hazards, Restrictions and Advice for Responders

- Dangerous swift water after rainfall
- Unhoused population utilizes the area
- Steep banks
- Gates controlled by Los Angeles County Public Works, need key

Resources-At-Risk

Ecological: California Least Tern, Belding's Savannah Sparrow, Burrowing Owl, Coastal California Gnatcatcher, Least Bell's Vireo, Light-footed Ridgway's Rail, Least Bittern, Pallid Bat, South Coast Marsh Vole, Western Mastiff Bat, Silvery Legless Lizard, El Segundo Blue Butterfly, Nuttall's Scrub Oak, Orcutt's Pincushion, Southern Tarplant

Economic: UCLA Marina Aquatic Center

Tribal: Contact the Native American Heritage Commission at (916) 373-3710.

Cultural and Historic: Contact the South Central Coastal Information Center at (657) 278-5395.

Site Description and Field Notes

Site Location/Segment: BAL-LA-C-005	Site Description and Field Notes: Gated staging area in alleyway. Large enough for temporary storage tanks and heavy equipment. Access to Centinela Creek can be made from Hammack St. alleyway. Observations can be made from the County access road. Personnel access to the channel bottom from the County access road by walking down the sloped bank.			
Gradient: Low	River Width: 20 meters (66 feet)	Vehicular Access: Passenger vehicles, small trucks, small trailers and small equipment at Hammack St. alleyway ramp.	Recreational Use: N/A	Boat Launches: N/A
Site Contact/s:	LA County Public Works (800) 675-4357 27/7 (562) 861-0316 (626) 458-4357 After Hours		Richard Brody, CDFW Region 5 Ballona Wetlands Ecological Reserve (310) 455-3243	
ESI Shoreline Type:	1B Exposed, solid man-made structures; 7 Exposed tidal flats; 9B Vegetated low banks			

Site Images

Upstream



Downstream



Straight Across



Entrance



RR = River Right RL = River Left

Photo Date: 5/31/2017

Site Objectives: Sandbag dam and/or boom to prevent further movement of oil and allow for collection of oil.

Implementation: Construct sandbag underflow dam with a minimum of 3 ft. high. Sandbag dam best deployed in section with vertical walls. Deploy boom to consist of 150 ft. of containment boom with a minimum of a 45-degree angle. Use a leader rope. Throw leader rope across creek to staff on the other bank. Boom best deployed in section with sloped walls.

Staging Area Location and Capabilities/Amenities/Waste Management: Limited staging on bike path. Best staging is at Centinela Creek at Hammack St. alleyway. Large enough for temporary storage tanks and heavy equipment.

Response Strategy Map (overview)

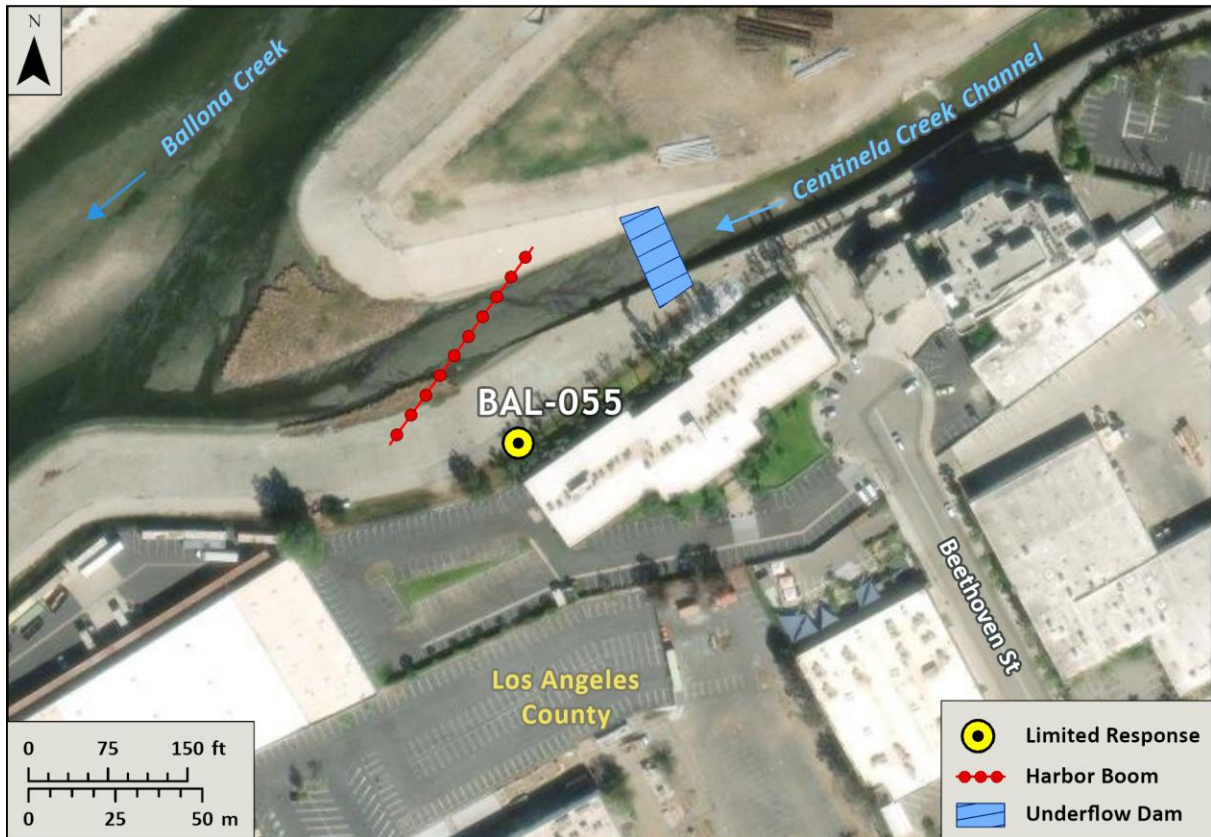


Table of Response Resources

Type	Sub-Type	Size	Unit	Quantity	Special Equipment or Comments
Sandbags					Sandbag dam minimum of 3 ft. high
Piping					For sandbag dam underflow
Boom	Swiftwater, Swamp, or Harbor	8, 12, or 18 in. skirt	Feet	150	
Rope			Feet	150	For leader on boom deployment
Stakes				2	For anchoring boom ends
Personnel			Crew	4	