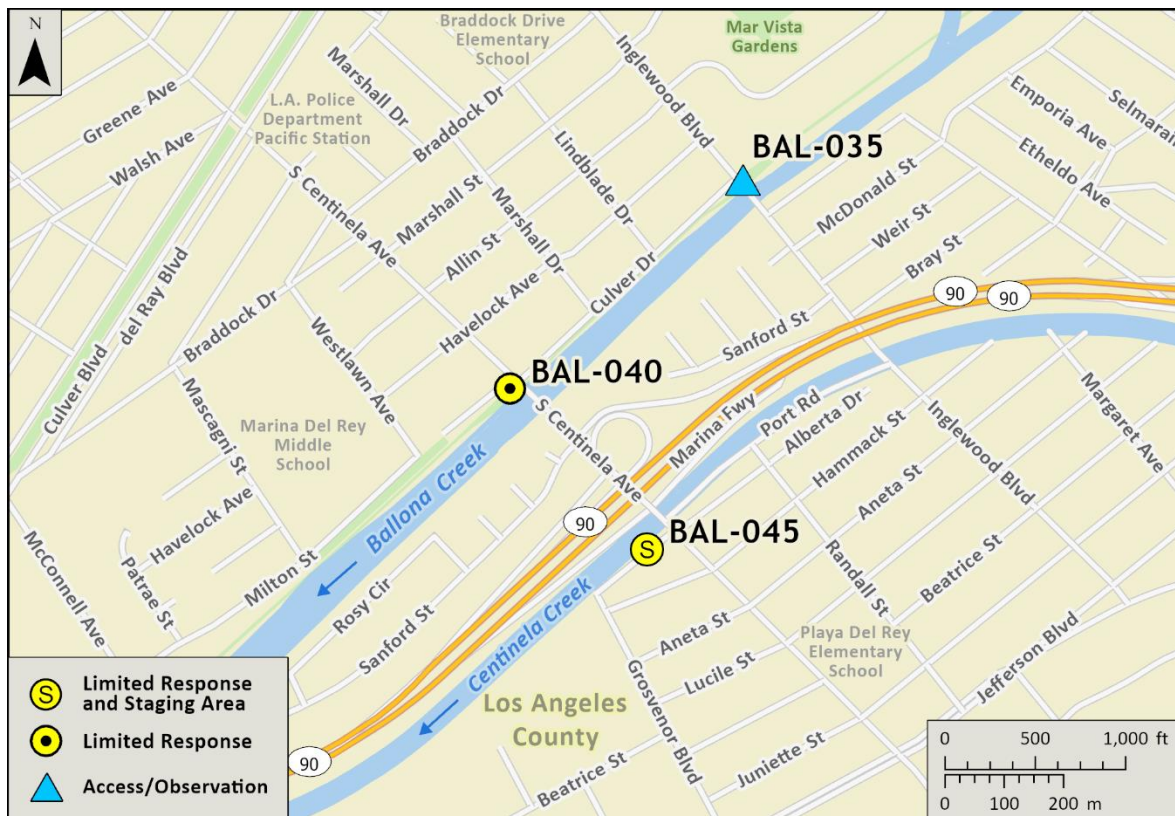


Driving Directions:	<p>From the South (Long Beach): I-405 North to CA-90 West toward Marina Del Rey. Take the exit for Centinela Ave., turn right to Ballona Creek.</p> <p>From the North (Ventura): US-101 South to I-405 South to CA-90 West toward Marina Del Rey. Take the exit for Centinela Ave., turn right to Ballona Creek.</p>		
Latitude: 33.98695 Longitude: -118.41614	Highway Postmile: N/A	Railroad Milepost: N/A	Cell Service: Yes

Nearest Address: 5000 S Centinela Ave., Los Angeles, CA 90066

Overview Street Map



Hazards, Restrictions and Advice for Responders

- Dangerous swift water after rainfall
- Unhoused encampments
- Steep banks
- Vehicle/bike traffic

Resources-At-Risk

Ecological: California Least Tern, Belding's Savannah Sparrow, Burrowing Owl, Coastal California Gnatcatcher, Least Bell's Vireo, Light-footed Ridgway's Rail, Least Bittern, Pallid Bat, South Coast Marsh Vole, Western Mastiff Bat, Silvery Legless Lizard, El Segundo Blue Butterfly, Nuttall's Scrub Oak, Orcutt's Pincushion, Southern Tarplant.

Economic: UCLA Marina Aquatic Center

Tribal: Contact the Native American Heritage Commission at (916) 373-3710.

Cultural and Historic: Contact the South Central Coastal Information Center at (657) 278-5395.

Site Description and Field Notes

Site Location/Segment: BAL-LA-C-005	Site Description and Field Notes: Limited staging on both sides of the creek. Boom trucks, trailer, vacuum trucks and temporary storage tanks could use the space but it is limited and narrow. There are many existing tie offs for boom. Observations can be made from Centinela Ave. bridge. Personnel access to the channel bottom from the bike path by walking down the sloped bank.			
Gradient: Low	River Width: 27 meters (89 feet)	Vehicular Access: Passenger vehicles, small trucks, and small trailers.	Recreational Use: N/A	Boat Launches: N/A
Site Contact/s:	LA County Public Works (800) 675-4357 27/7 (562) 861-0316 (626) 458-4357 After Hours			
ESI Shoreline Type:	1B Exposed, solid man-made structures; 8F Vegetated, steeply-sloping bluffs; 9B Vegetated low banks; 10B Freshwater marshes			

Site Images

Upstream



Downstream



Straight Across



Entrance



RR = River Right RL = River Left

Photo Date: 5/31/2017

Site Objectives: Sandbag dam and/or boom to prevent further movement of oil and allow for collection of oil.

Implementation: Construct sandbag underflow dam upstream of road crossing with a minimum of 3 ft. high. Deploy boom on downstream side of road crossing to consist of 200 ft. of containment boom with a minimum of a 45-degree angle utilizing existing anchor points. Use a leader rope on the boom and walk leader rope across the bridge. Pull the leader rope across the creek with boom attached.

Staging Area Location and Capabilities/Amenities/Waste Management: Limited on both sides of the creek. Boom trucks, trailer, vacuum trucks and temporary storage tanks could use the space but it is limited and narrow.

Response Strategy Map (overview)

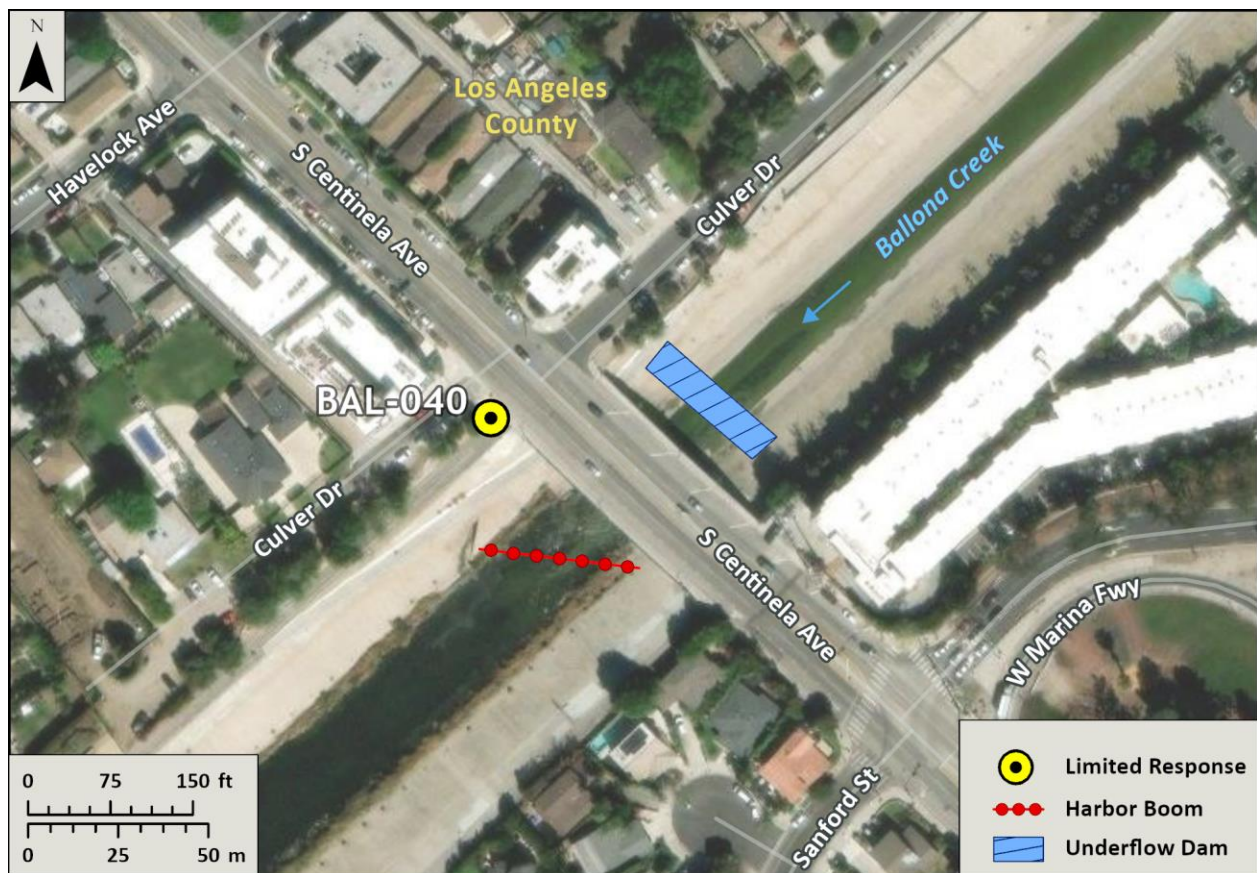


Table of Response Resources

Type	Sub-Type	Size	Unit	Quantity	Special Equipment or Comments
Sandbags					Sandbag dam minimum of 3 ft. high
Piping					For sandbag dam underflow
Boom	Swiftwater, Swamp, or Harbor	8, 12, or 18 in. skirt	Feet	200	
Rope			Feet	200	For leader on boom deployment
Personnel			Crew	4	