

**Driving Directions:**

**From the South (Long Beach):** I-405 North to La Cienega Blvd., left on Rodeo Rd., right on Jefferson Blvd., left on National Blvd.

**From the North (Ventura):** US-101 South to I-405 South to I-10 East. Exit National Blvd., travel east to Jefferson Blvd. at Exposition Rail Line on bike path.

**Latitude:** 34.02693  
**Longitude:** -118.37701

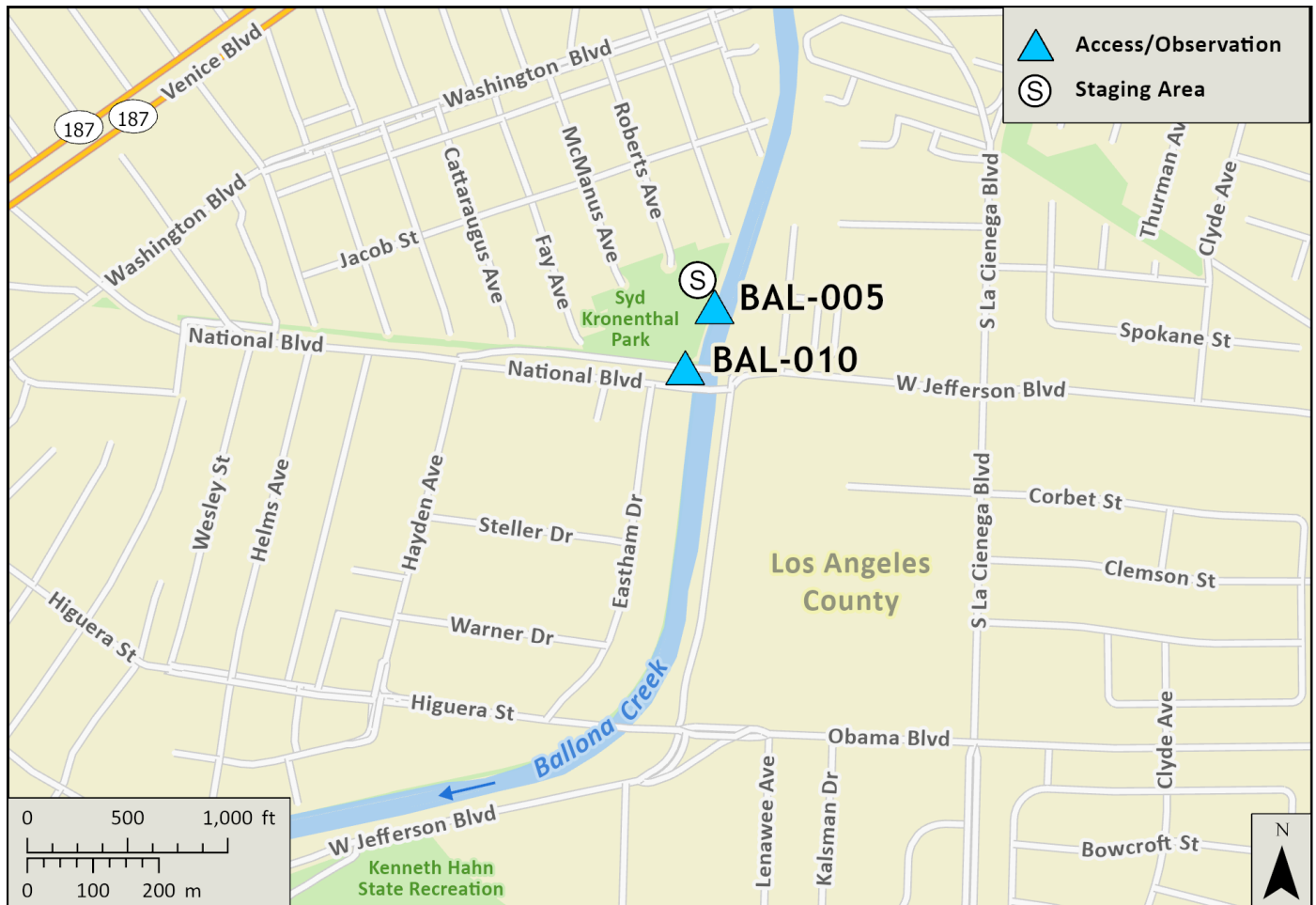
**Highway Postmile:**  
 N/A

**Railroad Milepost:** N/A

**Cell Service:** Yes

**Nearest Address:** 5741 W Jefferson Blvd., Los Angeles, CA 90016

### Overview Street Map



### Hazards, Restrictions and Advice for Responders

- Dangerous swift water after rainfall
- Unhoused encampments/biological hazards
- Locked gates
- Vehicle traffic

## Site Description and Field Notes

## Site Location/Segment:

BAL-LA-A-010, Sandbag Site Strategy

**Site Description and Field Notes:** Access location from Jefferson Blvd. and National Blvd. Observations can be made from bike path running over Ballona Creek parallel to National Blvd. Access to Ballona Creek can be made along Syd Kronenthal Park. Limited staging on bike path. Large staging area at nearby Syd Kronenthal Park. Personnel access to the channel bottom from the bike path. Use a 20 ft. extension ladder because of vertical sides.

## Site Contact/s:

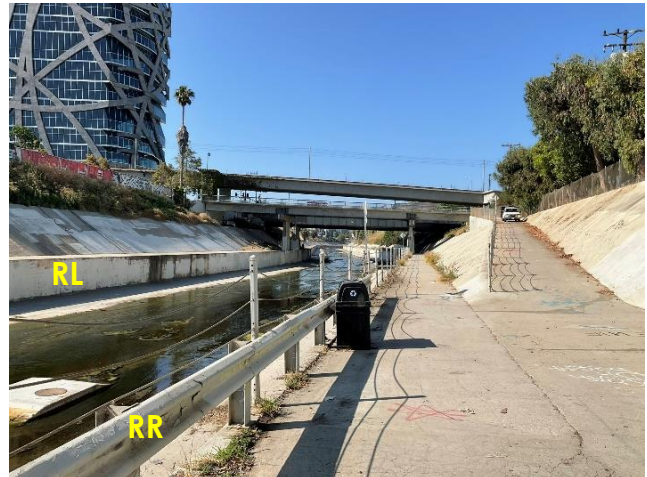
LA County Public Works  
(800) 675-4357 27/7  
(562) 861-0316  
(626) 458-4357 After Hours

## Site Images

Upstream



Downstream



Entrance



RR = River Right RL = River Left

Photo Date: 7/18/2023