

County: San Diego **ACP Division/Segment:** SD - F - S006**NOAA Chart:** 18773**Map Book:** 1308 A3**Decimal Degrees:** 32.68225 -117.24917**Site Description:**

This site is within the following Marine Protected Area: Cabrillo State Marine Reserve, and is governed by special protections established by the CDFW Marine Region. A small area of rock at the base of the bluff below the San Diego Waste Water Treatment Facility is where harbor seals have selected to haul out. This site consists of 6 miles of mostly inaccessible and remote shoreline.

Resources at Risk:*ESI and Habitat:* 2A Exposed wave-cut platforms in bedrock, mud, or clay

1A Exposed Rocky Shore

List of Resources at Risk:

Resource Name	Status	Presence	Sensitivity
Mammals harbor seal	FP	Year-round	

FT-Federally Threatened, FE-Federally Endangered, FP-Federally Protected, SE-State Endangered, ST-State Threatened, SP -State Protected, SR-State Rare, SSC-Species of Special Concern, BGEPA-Bald and Golden Eagle Protection Act, SSSP-State Special Status Species

List of Key Contacts:

Type	Name/Title	Organization	Phone
C	/Coordinator	Native American Heritage Commission	(916) 373-3710
C	/Coordinator	South Coastal Information Center	(619) 594-5682
E	/Coordinator	US Navy Base Point Loma	(619) 553-7069
O	Melissa Neuman/	National Marine Fisheries Service, Black Abalone	(562) 980-4115
O	/24hr	San Diego Waste Water Treatment Facility	(619) 221-8770
T	Becky Ota/Habitat Conservation Manager	California Department of Fish and Wildlife, MPAs	(650) 631-6789
T	/Chief Ranger	US National Park Service, Cabrillo Ntnl. Monument	(619) 261-2422
T	/Resources Program Manager	US National Park Service, Cabrillo Ntnl. Monument	(619) 204-8719
T	/Superintendent	US National Park Service, Cabrillo Ntnl. Monument	(760) 362-2204

C – Cultural, Historic, Archaeological; E – Entry/Owner/Access; O – Other; S – Safety; T – Trustee; X – Exclusion or Security

Additional Site Summary Comments:

A shoreline response plan for the Cabrillo National Monument was approved by the Area Committee in December of 2009 and updated in December 2022. The plan provides many helpful guidelines for responders who might be called to clean up oil in the park, including pre-approved cleanup methods that can be used there. The plan is available on the OSPR website <https://wildlife.ca.gov/OSPR/Contingency>.

Concerns and Advice to Responders:

This is an extremely rugged coastline with reliably big surf and swift oceanic current. A healthy kelp forest with a thick surface canopy can be found offshore from the tip of Point Loma to just south of the world famous Ocean Beach Pier.

Hazard and Restrictions:

Extremely rocky coastline which is continuously affected by strong wave action.

Site Strategies:**Site Validation Level: III****Strategy: 6-310.1 Objective:**

Strategy: Deploy a towed boom array to intercept floating petroleum. (The equipment list describes a single towed array). Multiple arrays may be required to address large spills.

Table of Response Resources

Equipment	Sub-Type	Size	Unit	QTY	Unit	Last Page Update
Boom	Harbor Boom			500	feet	<i>Strategy Updated:</i> <i>Last Test: 6/19/2013</i>
Vessel	Boom Boat			2		
Staff	Staff to Deploy			6		

Logistics:

Directions: None practical. This site is within the following Marine Protected Area: Cabrillo State Marine Reserve, and is governed by special protections established by the CDFW Marine Region.

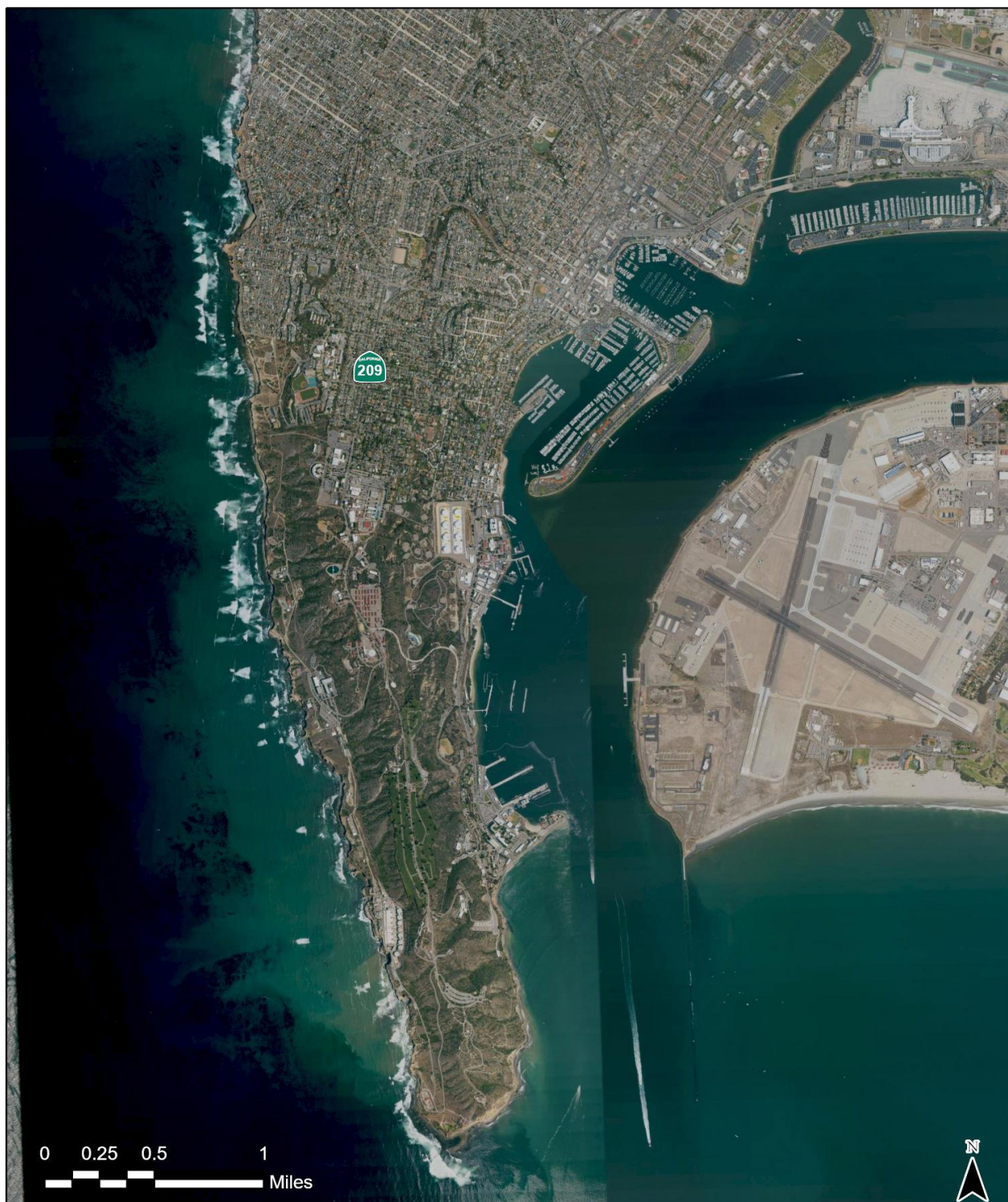
Land Access: The Point Loma Peninsula has many possible street access locations. The Cabrillo National Monument is located at street address: 1800 Cabrillo Memorial Drive, San Diego, CA 92106.

On-Water Limitations: Boat access only. Vessels should remain offshore to avoid submerged rocks. Ocean worthy vessels can sail here from Mission or San Diego Bays in an hour.

Facilities, Staging Areas, Command Posts, Available Equipment: Yes.

Communications Problems: None.

Additional Operational Comments:



CDFW - OSPR & USCG Site: 6-310 Name: Point Loma

A. Caputo (OSPR) & D. Lyons (OSPR) Date: 2/28/2023

**No shoreline strategies;
consider offshore strategies**