

5-260 -A Site Summary- Alamitos Bay/Los Cerritos Wetlands**5-260 -A**County: **Los Angeles Co.**Thomas Guide Location: **826 D4**Latitude N Longitude W
Decimal Degrees: **33.74499 -118.11574**USGS Quad: **Seal Beach**NOAA Chart: **18749**ACP Division: **LA-H**

Last Page Update : 2/15/2011

SITE DESCRIPTION:

Developed coastal embayment. Many marinas/boat slips but still contains a large area of sand and mud shoreline, particularly inside seawall and deep in back bay.

SEASONAL and SPECIAL RESOURCE CONCERN

Rank A - All year.

RESOURCES OF PRIMARY CONCERN

Coastal lagoon and wetlands complex.

California Brown Pelican, shorebirds, seabirds, and waterfowl.

Juvenile California Halibut and other finfish species. Green Sea Turtle.

Intertidal mudflat.

CULTURAL, HISTORIC, and ARCHEOLOGICAL SENSITIVITIES

Contact the California Dept. of Parks and Recreation - Office of Historical Preservation at (916) 445-7000 and the South Central Coastal Information Center at (657) 278-5395 for specific information on historic or cultural resources in this area.

KEY CONTACTS: Trustee (T); Entry/Owner/Access (E); Cultural (C); or Other Assistance (O)

| Type | Name / Title | Organization | Phone |
|------|------------------------------|--|----------------|
| O | | AES Power - Long Beach | (562) 493-7803 |
| O | | LA Dept. of Water & Power (24 hr) | (562) 431-2578 |
| O | | Long Beach Fire Dept. (24 hr) | (562) 570-9400 |
| O | | Long Beach Lifeguards (8am - 6pm) | (562) 570-1360 |
| T | | Calif. Dept. of Fish and Wildlife (24 hr) | (916) 358-1312 |
| T | | Calif. Dept. of Fish and Wildlife (Los Alamitos) | (562) 342-7100 |
| T | OSPR Environmental Scientist | Calif. Dept. of Fish and Wildlife OSPR | (562) 342-7215 |
| T | OSPR Environmental Scientist | Calif. Dept. of Fish and Wildlife OSPR | (562) 598-2849 |
| T | OSPR Environmental Scientist | Calif. Dept. of Fish and Wildlife OSPR | (562) 598-6203 |
| T | OSPR Technical Specialist | Calif. Dept. of Fish and Wildlife OSPR | (562) 598-4052 |
| T | | U.S. Fish and Wildlife Service (24 hr) | (760) 607-9768 |
| T | | U.S. Fish and Wildlife Service (8am - 4:30pm) | (760) 431-9440 |

ADDITIONAL SITE SUMMARY COMMENTS:

5-260 -A Site Strategy - Alamitos Bay/Los Cerritos Wetlands**5-260 -A**County: **Los Angeles Co.**
USGS Quad: **Seal Beach**Thomas Guide Location: **826 D4**
NOAA Chart: **18749**Latitude N Longitude W
Decimal Degrees: **33.74499 -118.11574**
ACP Division: **LA-H****CONCERNS and ADVICE to RESPONDERS:**

Last Page Update : 9/18/2012

To protect endangered and sensitive species and wetland habitat.

HAZARDS and RESTRICTIONS:

Shallow water and strong currents.

SITE STRATEGIESStrategy 5-260.1 Objective: Exclusion of oil entry to Alamitos Bay.

Boom to prevent oil entry to bay. Harbor boom (800') stored at Alamitos Bay Yacht Club. Anchor points on both sides of channel.

Strategy 5-260.2 Objective: Exclusion of oil entry to Steamshovel Slough (Los Cerritos Wetland).

Boom to prevent oil entry into Steamshovel Slough. Divert oil on an incoming tide to the collection area to the north of the Steamshovel Slough entrance. Use this strategy if oil breaches boom strategy 5-260.1. This strategy can also be used for spills originating in Alamitos Bay.

Strategy 5-260.3 Objective: Exclusion of oil entry to Steamshovel Slough (Los Cerritos Wetland).

Boom to prevent oil entry into Steamshovel Slough. Use this strategy if oil breaches boom strategy 5-260.1. This strategy can also be used for spills originating in Alamitos Bay or upstream of the Los Cerritos Wetland. Anchor points on both sides of channel on banks.

Table of Response Resources

| strategy number | harbor boom | swamp boom | Other boom type | sorb boom | Anchoring no type and gear | Boom boat | Skiffs punts | Skimmers No Type | Special Equipment or comment No and kinds | staff deploy | Staff tend |
|-----------------|-------------|------------|-----------------|-----------|----------------------------|-----------|--------------|------------------|---|--------------|------------|
| 5-260.1 | 800 | 0 | 0 | 0 | 0 | 1 | 0 | 0 | | 2 | |
| 5-260.2 | 500 | 0 | 0 | 0 | 1 Danforth 40 lb | 1 | 0 | 0 | Shore anchoring for both ends of boom. | 2 | |
| 5-260.3 | 400 | 0 | 0 | 0 | 1 Danforth 40 lb | 1 | 0 | 0 | Shore anchoring for both ends of boom. | 2 | |

LOGISTICS**DIRECTIONS: to site (by land and/or by water, to nearest launch ramp and are access permits required.)**

Boat launch available at Alamitos Bay. From PCH in Long Beach, go west on Second St. Boat launch is at 6201 E. Second St.

LAND ACCESS: Parking lot at 72nd Pl. and Ocean Blvd.**WATER LOGISTICS:** Strong currents. Heavy small boat traffic.

Limitations: depth, obstruction

Launching, Loading, Docking All services available.

and Services Available:

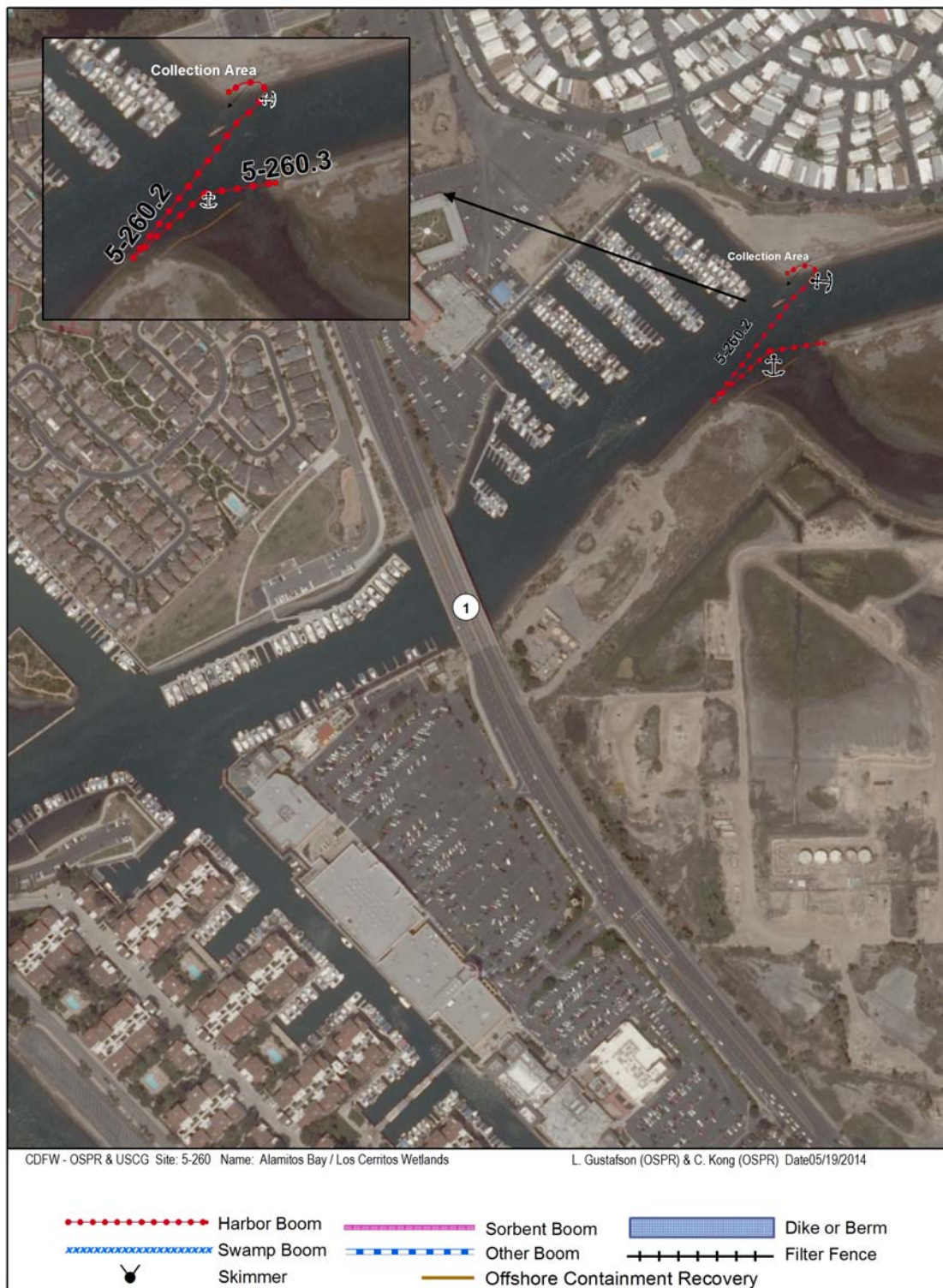
FACILITIES, STAGING AREAS, POSSIBLE FIELD POSTS AND EQUIPMENT AVAILABLE:

Pre-staged booms available adjacent to the Alamitos Bay Yacht Club at Ocean Blvd. and 72nd Place. There is parking and staging at public parking lot.

COMMUNICATIONS PROBLEMS: None.**ADDITIONAL OPERATIONAL COMMENTS:**

800 feet of 20" boom is pre-staged in storage containers located at the Alamitos Bay Yacht Club to be used to close off the channel. The boom can be deployed by Long Beach Lifeguards. There are several locations along Marina Dr. and Ocean Blvd. that have access to the beach.





Imagery: NAIP 2010 (Summer) 4-Band