

**5-210-A Site Summary - Cabrillo Beach Wetlands****5-210-A****County:** Los Angeles **ACP Division/Segment:** LA - G - S01**NOAA Chart :** 18749**Map Book :** Thomas Guide 854 **Decimal Degrees** 33.71438 -118.28427  
C1**Site Description:**

Small (3.2 acre) mitigation site wetland adjacent to Cabrillo Beach. Sheltered habitat within Los Angeles Harbor. Mudflat-marsh ecosystem with resting and feeding waterfowl, seabirds, and shorebirds.

**Resources at Risk:***ESI and Habitat:* 10A Salt - and brackish-water marshes

9A Sheltered tidal flats

8C Sheltered riprap

**List of Resources at Risk:**

	Resource Name	Status	Presence
Birds	California least tern	FE, SE	Apr - Sep
Birds	waterfowl		Sep - May
Birds	California brown pelican		Jun - Oct
Birds	seabirds		Year-round
Birds	shorebirds		Year-round

FT-Federally Threatened, FE-Federally Endangered, FP-Federally Protected, SE-State Endangered, ST-State Threatened, SP -State Protected, SR-State Rare, SSC-Species of Special Concern, BGEPA-Bald and Golden Eagle Protection Act, SSSP-State Special Status Species

**List of Key Contacts:**

Type	Name/Title	Organization	Phone
O	/	Cabrillo Marine Aquarium	(310) 548-7562
O	/	Los Angeles City Fire Dept. (24 hr)	(800) 688-8000
O	/	Los Angeles County Fire	(323) 881-2455
O	/	Los Angeles Port Police (24 hr)	(310) 732-3500
T	Nancy Frost/CA least tern Survey	CA Dept of Fish and Wildlife	(858) 467-4208
T	/Southern Comms. Center (SURCOM) 24-hr	CA State Parks	(951) 443-2944
T	/	Calif. Dept. of Fish and Wildlife (24 hr)	(916) 358-1312
T	/	Calif. Dept. of Fish and Wildlife (Los Alamitos)	(562) 342-7100
T	OSPR /Environmental Scientist	Calif. Dept. of Fish and Wildlife OSPR	(562) 598-6203
T	OSPR /Environmental Scientist	Calif. Dept. of Fish and Wildlife OSPR	(562) 598-2849
T	OSPR /Technical Specialist	Calif. Dept. of Fish and Wildlife OSPR	(562) 598-4052
T	Main Office/	South Central Coastal Information Center	(657) 278-5395
T	On Call/Spill Coordinator	US Fish Wildlife Service Carlsbad 24 hour	(760) 607-9768

C – Cultural, Historic, Archaeological; E – Entry/Owner/Access; O – Other; S – Safety; T – Trustee; X – Exclusion or Security

**Additional Site Summary Comments:**

This is a popular recreation area which is adjacent to a Boy Scout camp, several marinas, and public beach.

**Concerns and Advice to Responders:**

To protect endangered and sensitive species and wetland habitat. Responders should watch for and avoid nesting birds and minimize disturbances to vegetation. Avoid the spread of oil into the wetland through response activities.

**Hazard and Restrictions:**

Fast tidal currents can impact the channel into the wetland. Use caution when placing the boom.

**Site Strategies:**

**Strategy: 5-210.1 Objective:** Exclusion of oil entry to wetland.

*Strategy:* Boom to prevent oil entry to inlet.

Table of Response Resources

Equipment	Sub-Type	Size	Unit	QTY	Unit	Last Page Update
Boom	Harbor Boom	18 or 24 inch		100	feet	<i>Strategy Updated:</i> 11/19/2015 <i>Last Test:</i> 10/6/2015
Staff	Staff to Deploy			2		

**Strategy: 5-210.2 Objective:** Exclusion of oil entry to wetland.

*Strategy:* Boom (1500') may be placed to move oil to a collection point. South end of boom is placed at the end of the rock jetty to the north of the launch ramp. North end of boom is placed at the riprap where the breakwater at Cabrillo Marina starts. The north end can be used as a collection point. Anchors will be needed when the wind is not from the S or SW or the currents are too strong to keep the boom configuration. Consider using up to 5 anchors in windy conditions.

Table of Response Resources

Equipment	Sub-Type	Size	Unit	QTY	Unit	Last Page Update
Boom	Harbor Boom	18 or 24 inch		1500	feet	<i>Strategy Updated:</i> 11/19/2015 <i>Last Test:</i> 10/6/2015
Anchor	Danforth	40 lb		5		
Staff	Staff to Deploy			4		
Vessel	Boom boat			1		

**Logistics:**

*Directions:* Wetland and boat launch are adjacent to each other. From Pacific Ave. in San Pedro, go east on Stephen M. White Drive until you enter Cabrillo Beach. Go to the north end of the parking lot.

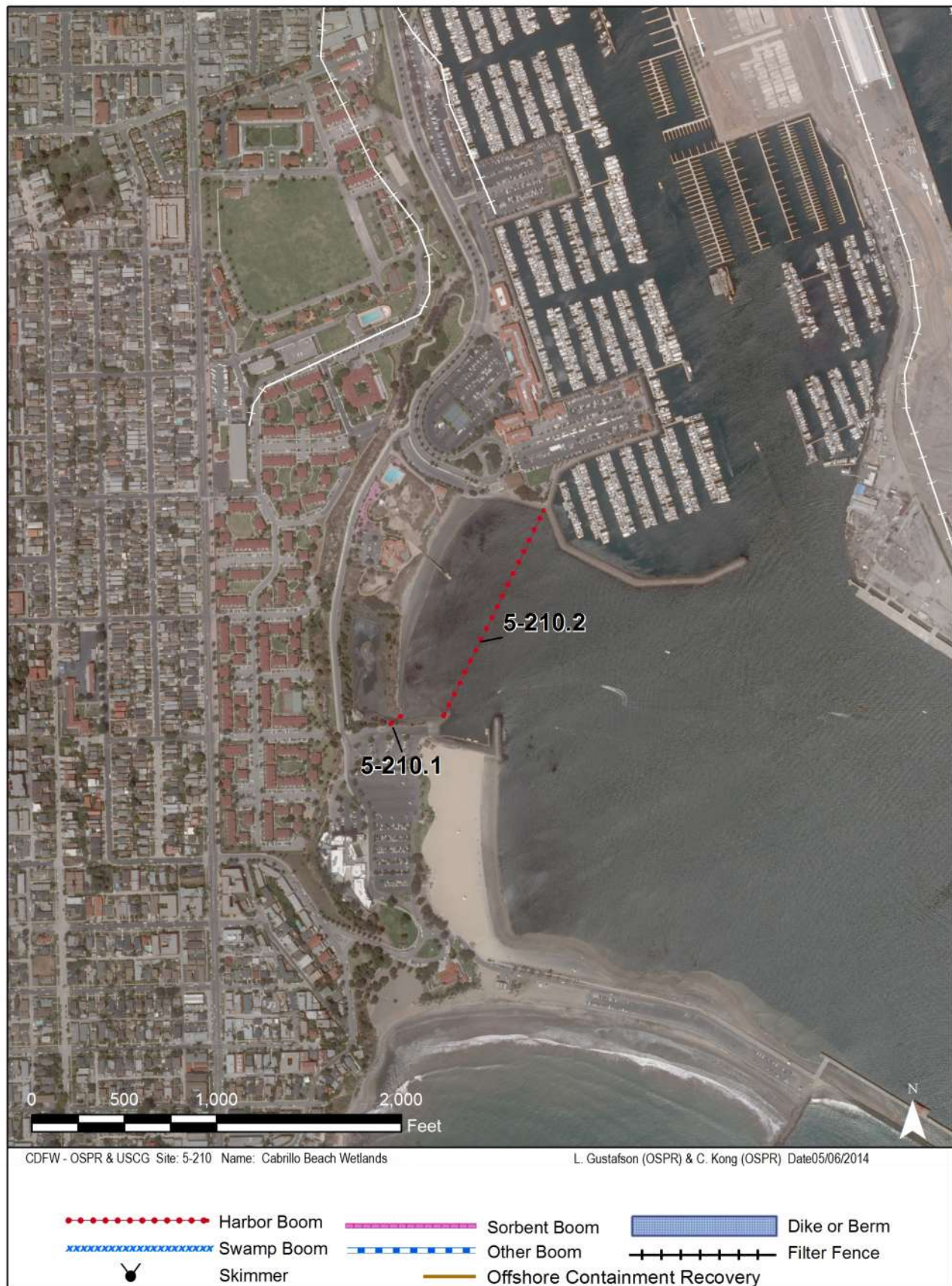
*Land Access:* Access to site by land is granted by the Cabrillo Marine Aquarium.

*On-Water Limitations:* Shallow water. Heavy small boat traffic. All services available.

*Facilities, Staging Areas, Command Posts, Available Equipment:* A large parking lot is available for staging equipment.

*Communications Problems:* None.

*Additional Operational Comments:* There are several locations available along Stephen White Dr., Shishoean Rd., and Oliver Victor Circle that have access to the beach.



Imagery: NAIP 2010 (Summer) 4-Band