

5-150-A Site Summary - Ballona Lagoon Wetlands, Del Rey Lagoon**5-150-A****County:** Los Angeles **ACP Division/Segment:** LA - E - S01**NOAA Chart :** 18744**Map Book :** 702 A2**Decimal Degrees** 33.96289 -118.45185**Site Description:**

Coastal lagoon and wetlands complex.

Resources at Risk:*ESI and Habitat:* 10A Salt - and brackish-water marshes**List of Resources at Risk:**

	Resource Name	Status	Presence
Birds	California brown pelican		Apr - Nov
Birds	California least tern	FE, SE	Apr - Sep
Birds	Belding's savannah sparrow	SE	Year-round
Birds	shorebirds		Year-round
Birds	waterfowl		Sep - May

FT-Federally Threatened, FE-Federally Endangered, FP-Federally Protected, SE-State Endangered, ST-State Threatened, SP -State Protected, SR-State Rare, SSC-Species of Special Concern, BGEPA-Bald and Golden Eagle Protection Act, SSSP-State Special Status Species

List of Key Contacts:

Type	Name/Title	Organization	Phone
E	/Dept. of Public Works	City of Los Angeles	(626) 798-6611
E	/Dept. of Public Works	County of Los Angeles	(310) 291-5626
E	/Dept. of Public Works	County of Los Angeles (24 hr)	(800) 675-4357
E	/Dept. of Public Works	County of Los Angeles (8am - 5pm)	(310) 417-3902
T	Nancy Frost/CA least tern Survey	CA Dept of Fish and Wildlife	(858) 467-4208
T	/Southern Comms. Center (SURCOM) 24-hr	CA State Parks	(951) 443-2944
T	Richard Brody/Reserve Manager	Calif. Dept. of Fish and Wildlife	(310) 455-3243
T	/	Calif. Dept. of Fish and Wildlife (24 hr)	(916) 358-1312
T	/	Calif. Dept. of Fish and Wildlife (Los Alamitos)	(562) 342-7100
T	OSPR /Environmental Scientist	Calif. Dept. of Fish and Wildlife OSPR	(562) 342-7215
T	OSPR /Environmental Scientist	Calif. Dept. of Fish and Wildlife OSPR	(562) 598-6203
T	OSPR /Environmental Scientist	Calif. Dept. of Fish and Wildlife OSPR	(562) 598-2849
T	OSPR /Technical Specialist	Calif. Dept. of Fish and Wildlife OSPR	(562) 598-4052
T	Main Office/	South Central Coastal Information Center	(657) 278-5395
T	On Call/Spill Coordinator	US Fish Wildlife Service Carlsbad 24 hour	(760) 607-9768

C – Cultural, Historic, Archaeological; E – Entry/Owner/Access; O – Other; S – Safety; T – Trustee; X – Exclusion or Security

Additional Site Summary Comments:

Concerns and Advice to Responders:

To protect endangered and sensitive species and wetland habitat. Responders should watch for and avoid nesting birds and minimize disturbances to vegetation. Avoid the spread of oil into the wetland through response activities.

Hazard and Restrictions:**Site Strategies:**

Strategy: 5-150.1 Objective: Exclusion of oil entry to wetland.

Strategy: Close tidal gates. There are two tidal gates; one is to the Ballona Wetlands (5-150.1b, upstream) and the other is to the Del Rey Lagoon (5-150.1a, downstream near residences). The Ballona Wetland gates are closed mechanically; call Los Angeles County at (562) 861-0316 or (626) 458-4357 after hours dispatch. The Del Rey Lagoon gates can be operated remotely; call the City Of Los Angeles, Dept. of Recreation and Parks at (213) 216-8202.

Table of Response Resources

Equipment	Sub-Type	Size	Unit	QTY	Unit	Last Page Update
Staff	Staff to Deploy			1		Strategy Updated: 5/14/2018 Last Test:

Strategy: 5-150.2 Objective: Exclusion of oil entry to wetland.

Strategy: Block culvert. Use sandbags or an inflatable plug to block culvert. This would be best accomplished by accessing the culvert on the wetland side.

Table of Response Resources

Equipment	Sub-Type	Size	Unit	QTY	Unit	Last Page Update
Sandbags						
Inflatable Plug				1		
Staff	Staff to Deploy			2		

Logistics:

Directions: From Lincoln Blvd. (Highway 1) in Marina Del Rey, go west on Culver Blvd. and north on Pacific Ave. until you reach the terminus. There will be a parking lot.

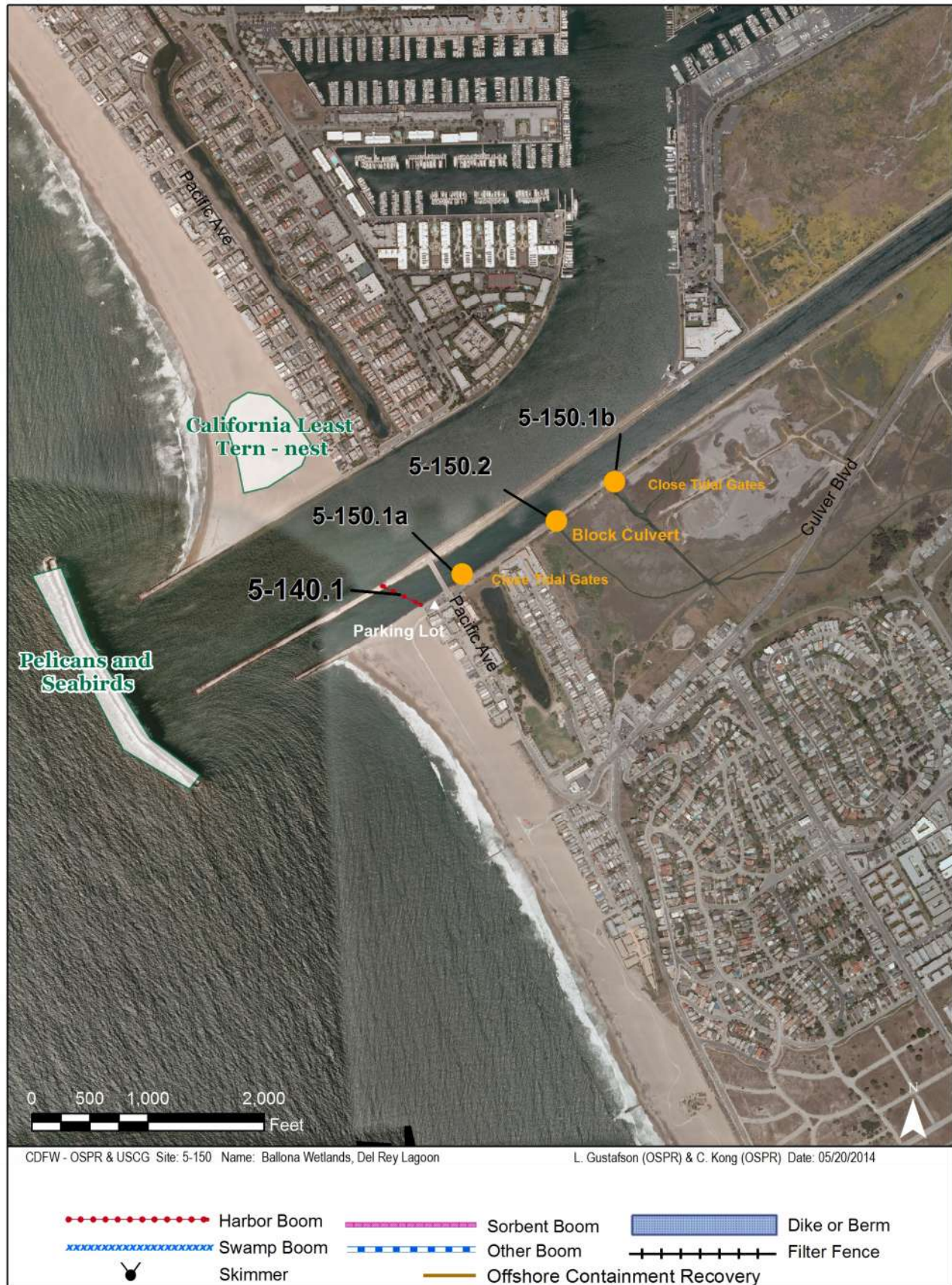
Land Access: From parking lot, walk east to tidal gates.

On-Water Limitations:

Facilities, Staging Areas, Command Posts, Available Equipment:

Communications Problems:

Additional Operational Comments: Several locations along Old Harbor channel and Esplanade Ave. that have access to these areas. First responders may need bolt cutters for locks to tidal gates.



Imagery: NAIP 2010 (Summer) 4-Band