

4-065-A Site Summary - Rocks Offshore Little Pico Creek**4-065-A****County:** San Luis Obispo **ACP Division/Segment:** SL - B - S05**NOAA Chart:** 18700**Map Book:** 324 G-6**Decimal Degrees:** 35.63197 -121.16763**Site Description:**

Rocks offshore Little Pico Creek. Site is a Coastal National Monument under Bureau of Land Management. Also within Monterey Bay National Marine Sanctuary and Sea Otter Game refuge. Harbor seals, California sea lions, and southern sea otters present year-round. Black abalone may be present in rocky intertidal habitat. Designated critical habitat for leatherback sea turtles. Offshore rock used as a bird roosting site.

Resources at Risk:*ESI and Habitat:* 1A Exposed Rocky Shore**List of Resources at Risk:**

	Resource Name	Status	Presence	Sensitivity
Invertebrates	black abalone	FE	Year-round	
Mammals	harbor seal	FP	Year-round	
Mammals	Southern sea otter	FT, SP	Year-round	
Reptiles	leatherback sea turtle	FE	Aug - Nov	

FT-Federally Threatened, FE-Federally Endangered, FP-Federally Protected, SE-State Endangered, ST-State Threatened, SP -State Protected, SR-State Rare, SSC-Species of Special Concern, BGEPA-Bald and Golden Eagle Protection Act, SSSP-State Special Status Species

List of Key Contacts:

Type	Name/Title	Organization	Phone
C	/	Central Coast Information Center	(805) 682-4711
C	/Coordinator	Native American Heritage Commission	(916) 373-3710
E	John Hodge/Associate Field Manager	Bureau of Land Management, Coastal Natl. Monum	(661) 301-1659
T	Leisyka Parrott/CCNM Manager	Bureau of Land Management	(707) 513-3891
T	SURCOM (24-hr)/	California State Parks (Dispatch)	(951) 443-2969
T	/Emergency Responder, 24-hr	Monterey Bay National Marine Sanctuary	(831) 236-6797
T	Justin Viezbicke/Marine Mammal Stranding	NOAA National Marine Fisheries Service	(562) 506-4315
T	Melissa Neuman/Marine Biologist	NOAA National Marine Fisheries Service	(562) 481-4594
T	Tina Fahy/Sea Turtle Recovery Coordinator	NOAA National Marine Fisheries Service	(562) 980-4023
T	/Spill Response Coordinator	US Fish and Wildlife Service, Federal T&E Species	(805) 644-1766

C – Cultural, Historic, Archaeological; E – Entry/Owner/Access; O – Other; S – Safety; T – Trustee; X – Exclusion or Security

Additional Site Summary Comments:

Harbor seals pup March - June; southern sea otters pup year-round; leatherback sea turtles most commonly observed August - November. Brown pelicans roost summer - fall and breed June - November, with peak numbers September - October. Brandt's cormorants roost fall - winter and breed spring - summer, with peak numbers June - October.

Concerns and Advice to Responders:

Black abalone (endangered) may be present on nearby rocky intertidal habitat (designated critical habitat). To protect seabirds, limit spill response activities within 1,000 feet of nesting seabirds when possible. Try to remain at least 100 yards away from marine mammals and sea turtles and if approached closely by a marine mammal or turtle while motoring, reduce speed and shift to neutral; do not engage props until the animals are observed at the surface, clear of the vessel. Southern sea otters (threatened) pup year-round.

Hazard and Restrictions:

BLM, Coastal National Monument.

Site Strategies:**Site Validation Level: II**

Strategy: 4-065.1 Objective: No Onsite Options: Consider Offshore Containment/Recovery/ART

Strategy: Offshore containment and recovery (OCR) is the preferred option although heavy surf may hinder these operations. No specific response equipment listed due to the many variables associated with each spill regarding OCR. Early consideration should be given to the use of applied response technologies.

Table of Response Resources

Last Page Update**Logistics:**

Directions: From the north: Take Hwy 101 S to Hwy 46 W to Hwy 1 N (or take Hwy 5 S to Hwy 41 W to Hwy 46 W to Hwy 1 N). Follow Hwy 1 N approx. 1.5 miles north of San Simeon. From the south: From Hwy 101 in San Luis Obispo take the Morro Bay, Hwy 1 exit and continue as above.

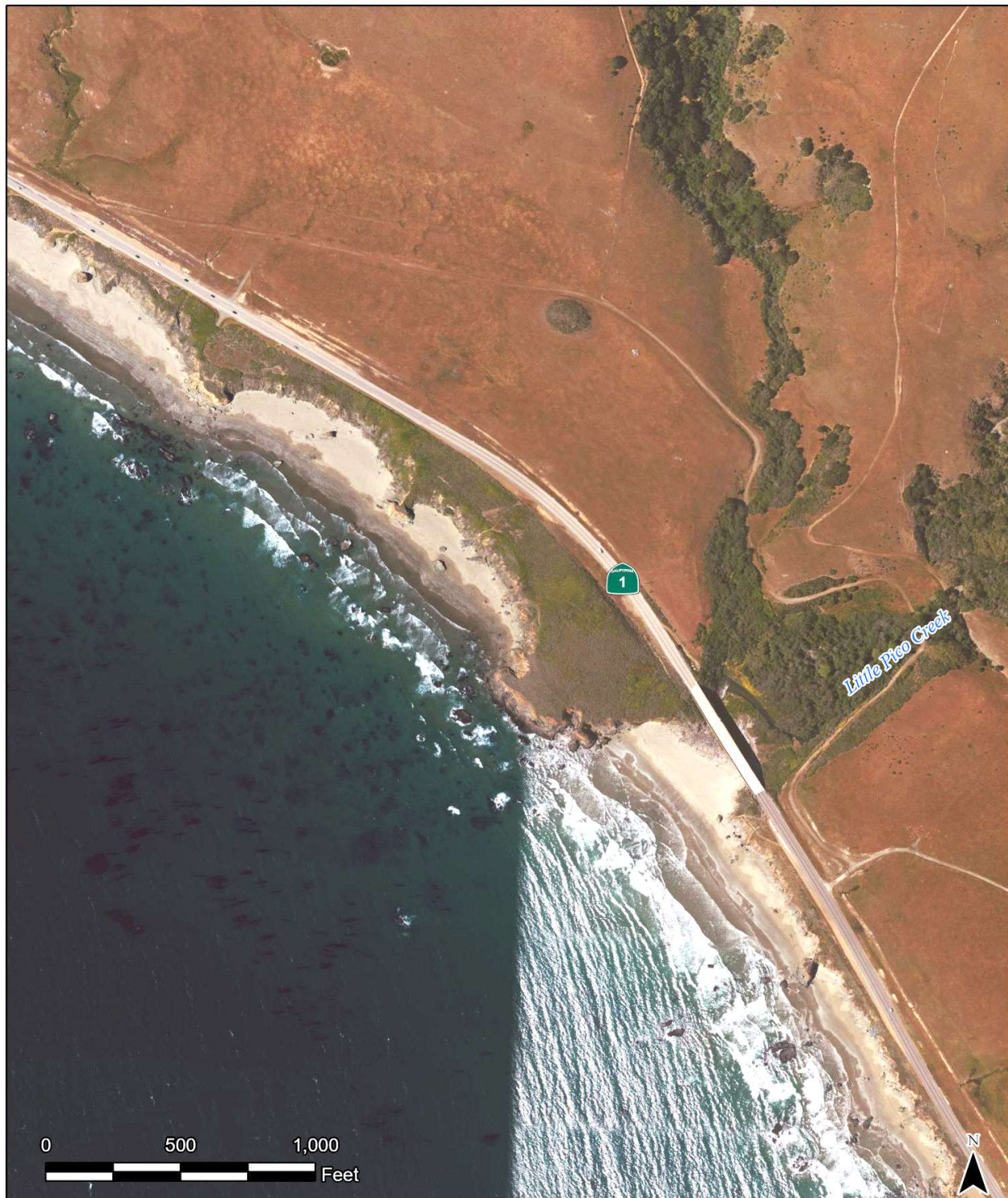
Land Access: No land access offshore rock, Vista turnout 2/10 mi south for parking.

On-Water Limitations: Limitations: Depth, obstruction. Launching, Loading, Docking and Services Available: Morro Bay boat launch approx. 30 miles south.

Facilities, Staging Areas, Command Posts, Available Equipment: Staging: Vista turnout 2/10 mile south of Little Pico Creek bridge for parking, WR State Beach Command Post: Motels in San Simeon approx. 1.5 miles south. State Park's office at Hearst Castle. Airports: SLO County Airport, approx. 1 hour south. Paso Robles Airport is 45 min. inland. Private landing strip for small planes is north of Hearst Castle Visitors center, approx. 2 miles north.

Communications Problems: None.

Additional Operational Comments:



CDFW - OSPR & USCG Site: 4-065 Name: Rocks Offshore Little Pico Creek

A. Caputo (OSPR) & J. Gold (OSPR) Date: 10/6/2023

**No shoreline strategies;
consider offshore strategies**