

**4-630-A Site Summary - Eagle Canyon Creek****4-630-A****County :** Santa Barbara **ACP Division/Segment :** SB - M - S02**NOAA Chart :** 18721**Map Book :** 993 B x 2**Decimal Degrees :** 34.4353 -119.9293**Site Description:**

This is a small, intermittent creek which empties out onto a small fine-grained sand beach backed by a cobble-boulder storm berm. Tidal wash over occurs into a seasonal lagoon at the beach. The mouth is open to the ocean only during winter rains. The Sunny Sea Farms Neushul Mariculture grows macroalgae by the Ellwood pier near Eagle Creek.

**Resources at Risk:***ESI and Habitat:* 10A Salt - and brackish-water marshes

9B Vegetated low banks

6A Gravel Beach

5 Mixed sand and gravel beaches

3A Fine- to medium-grained sand beaches

2A Exposed wave-cut platforms in bedrock, mud, or clay

1A Exposed Rocky Shore

**List of Resources at Risk:**

	<b>Resource Name</b>	<b>Status</b>	<b>Presence</b>
Amphibians	California red-legged frog	FT	Year-round
Fish	tidewater goby	FE	Year-round
Mammals	Southern sea otter	FT, SP	Year-round

FT-Federally Threatened, FE-Federally Endangered, FP-Federally Protected, SE-State Endangered, ST-State Threatened, SP -State Protected, SR-State Rare, SSC-Species of Special Concern, BGEPA-Bald and Golden Eagle Protection Act, SSSP-State Special Status Species

**List of Key Contacts:**

<b>Type</b>	<b>Name/Title</b>	<b>Organization</b>	<b>Phone</b>
C	/	Central Coast Archeological Information Center	(805) 893-2474
C	/	Native American Heritage Commission	(916) 373-3710
T	/	US Fish and Wildlife Service, Federal T&E Species	(805) 644-1766

C – Cultural, Historic, Archaeological; E – Entry/Owner/Access; O – Other; S – Safety; T – Trustee; X – Exclusion or Security

**Additional Site Summary Comments:**

**Concerns and Advice to Responders:**

The lagoon is habitat for sensitive species. Both habitat and species can be injured by oil and response/cleanup activities unless responders minimize disturbance in stream, lagoon, and associated vegetation; avoid trampling oil into sediments; and follow protective conditions from IC and resource biologists.

**Hazard and Restrictions:**

Unhealthy levels of coliform bacteria have been found intermittently in streams and on beaches in this area. Use appropriate PPE, safety procedures, and include reference to potential health problems in any site safety plan.

**Site Strategies:****Strategy: 4-630.1 Objective:** Build Sandbag Dam

*Strategy:* Build a sandbag exclusion/containment dam using onsite materials or imported materials as directed by CDFW biologist. Use clean low silt content sand. If using onsite materials obtain only from un-vegetated areas and have a cultural specialist onsite to monitor. Install underflow pipes and/or a spillway to regulate water flows as conditions dictate. Closely regulate water levels to reduce collateral oiling. If there is recoverable oil on-water, deploy sorbents and contact the IC immediately regarding the use of skimmers.

Table of Response Resources

Equipment	Sub-Type	Size	Unit	QTY	Unit	Last Page Update
Boom	Sorbent Boom			40	feet	
Staff				5		
Sandbags				50		

**Strategy: 4-630.2 Objective:** Erect Filter Fence

*Strategy:* Construct a filter fence across the front of the channel where the inlet is narrowest, water flows are low or dry, the ground can receive and hold metal stakes, and the spill is heavy oil. Monitor barrier and replace pom-poms as necessary to maintain effectiveness.

Table of Response Resources

Equipment	Sub-Type	Size	Unit	QTY	Unit	Last Page Update
Fence	Construction Fencing	4 x 100 feet		1	Rolls	
Misc.	Oil Snare (pom-pom)			40		
stakes	T-posts	6 feet		16		
Misc.	Stake Driver			1		
Staff				5		

**Strategy: 4-630.3 Objective:** Shoreline Pre-Clean: Resource Specialist Supervision Required

*Strategy:* Consult with resource trustees regarding wildlife issues before undertaking this activity. Hand crews to move and store kelp, driftwood, vegetative debris, trash, and other materials above high-tide line. Dispose of trash. Replace unoiled debris in its former location once the threat of oiling is past. If heavy equipment is required for this operation, request trustee consultation and IC for authorization.

Table of Response Resources

Equipment	Sub-Type	Size	Unit	QTY	Unit	Last Page Update
Vehicle	ATV			1		
Misc.	Trash Bags					
Staff				5		

**Logistics:**

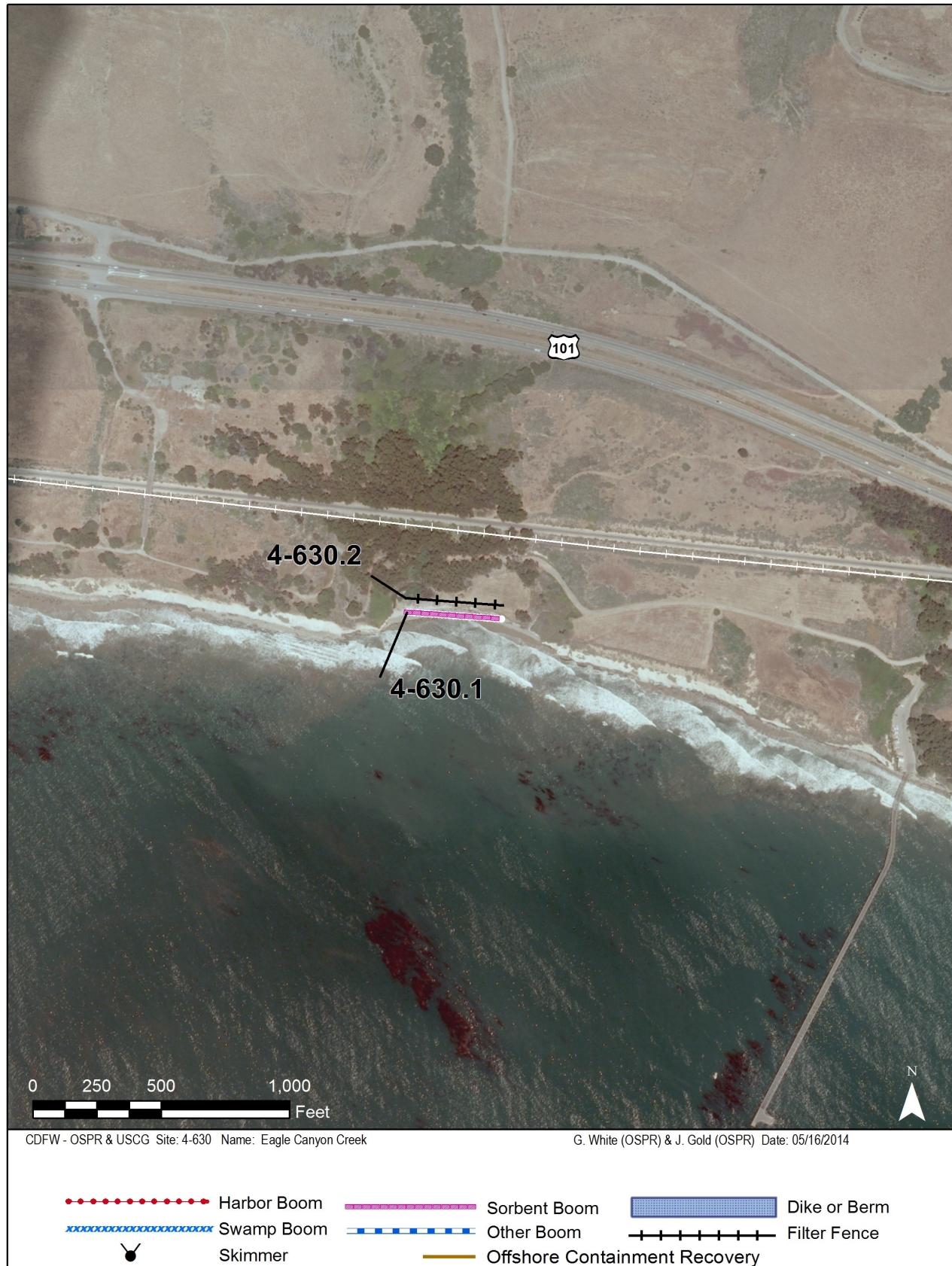
*Directions:* From US 101 (west of Santa Barbara) exit at Winchester Canyon. Drive west along Calle Real and go south over the freeway at Cathedral Oaks Rd. Turn West onto Hollister Ave towards the Ritz-Carlton Bacara. Go past the Bacara to the gate and obtain access. Once past the gate drive for 0.5 mile to the creek.

*Land Access:*

*On-Water Limitations:* Santa Barbara Harbor is the nearest full service civilian harbor for full service berthing, launching and fueling.

*Facilities, Staging Areas, Command Posts, Available Equipment:*

*Communications Problems:* none



Imagery: NAIP 2010 (Summer) 4-Band