

**4-620-A Site Summary - Las Llagas (El Capitan Ranch Beach)****4-620-A****County :** Santa Barbara **ACP Division/Segment :** SB - L - S01**NOAA Chart :** 18721**Map Book :** 982 C x 5**Decimal Degrees :** 34.4581 -120.0021**Site Description:**

This inlet is located within a small private gated beach community. The mouth of Las Llagas Creek is characterized by a small seasonal lagoon, with an area of approximately 0.1 to 0.2 acre. The lagoon is bounded on the west by a graded earthen access road and to the east by a steep brush covered hillside with no access. The stream empties onto a sand covered pocket beach which may erode to cobbles in the winter months. The northern end of the lagoon has willow riparian habitat. This lagoon is fed by an intermittent creek flowing through a large culvert which passes under the US 101. The culvert under US 101, through which Las Llagas Creek flows, provides a barrier to steelhead migration.

**Resources at Risk:***ESI and Habitat:* 10A Salt - and brackish-water marshes

9B Vegetated low banks

6B Riprap

5 Mixed sand and gravel beaches

3A Fine- to medium-grained sand beaches

2A Exposed wave-cut platforms in bedrock, mud, or clay

1A Exposed Rocky Shore

**List of Resources at Risk:**

	Resource Name	Status	Presence
Amphibians	California red-legged frog	FT	Year-round
Fish	tidewater goby	FE	Year-round
Mammals	Southern sea otter	FT, SP	Year-round
Reptiles	southwestern pond turtle	SSC	Year-round

FT-Federally Threatened, FE-Federally Endangered, FP-Federally Protected, SE-State Endangered, ST-State Threatened, SP -State Protected, SR-State Rare, SSC-Species of Special Concern, BGEPA-Bald and Golden Eagle Protection Act, SSSP-State Special Status Species

**List of Key Contacts:**

Type	Name/Title	Organization	Phone
C	/	Central Coast Archeological Information Center	(805) 893-2474
C	/	Native American Heritage Commission	(916) 373-3710
T	/	US Fish and Wildlife Service, Federal T&E Species	(805) 644-1766

C – Cultural, Historic, Archaeological; E – Entry/Owner/Access; O – Other; S – Safety; T – Trustee; X – Exclusion or Security

**Additional Site Summary Comments:**

**Concerns and Advice to Responders:**

The lagoon is habitat for sensitive species. Both habitat and species can be injured by oil and response/cleanup activities unless responders minimize disturbance in stream, lagoon, and associated vegetation; avoid trampling oil into sediments; and follow protective conditions from IC and resource biologists.

**Hazard and Restrictions:**

A. Unhealthy levels of coliform bacteria have been found intermittently in streams and on beaches in this area. Use appropriate PPE, safety procedures, and include reference to potential health problems in any site safety plan.

B. Safety Considerations- Roads, trails, beach cliffs and hillsides may be unstable in wet weather. Beware of flashfloods in canyons during rainy weather, ticks, poison oak, and rattlesnakes. Beware of trains at unregulated Railroad Crossings. Care must be taken when working on beaches backed by high cliffs. Safe entries to, and exits from beaches in this area are related to tides and beach sand levels. Sand surface may be soft. YOU MAY GET STRANDED ON THE BEACH - Plan accordingly.

**Site Strategies:****Strategy: 4-620.1 Objective:** Exclude Oil

**Strategy:** Deploy exclusion booms across the inlet to minimize the likelihood of oiling the estuary. Place the booms in a configuration that forms an adjustable oil collection pocket that can accommodate changes in flow direction. Back exclusion booms with sorbent booms to minimize leakage. Line the shorelines and any side channels within the inlet to prevent collateral oiling. If there is recoverable oil on-water, deploy sorbents and contact the IC immediately regarding the use of skimmers. Monitor, adjust, and replace booms as needed to maintain effectiveness.

Table of Response Resources

Equipment	Sub-Type	Size	Unit	QTY	Unit	Last Page Update
Boom	Swamp Boom			200	feet	
Boom	Sorbent Boom			200	feet	
Vehicle	ATV			1		
Staff				5		
anchors				3		

**Strategy: 4-620.2 Objective:** Build Sandbag Dam

**Strategy:** Build a sandbag exclusion/containment dam using onsite materials or imported materials as directed by CDFW biologist. Use clean low silt content sand. If using onsite materials obtain only from un-vegetated areas and have a cultural specialist onsite to monitor. Install underflow pipes and/or a spillway to regulate water flows as conditions dictate. Closely regulate water levels to reduce collateral oiling. If there is recoverable oil on-water, deploy sorbents and contact the IC immediately regarding the use of skimmers.

Table of Response Resources

Equipment	Sub-Type	Size	Unit	QTY	Unit	Last Page Update
Boom	Sorbent Boom			200	feet	
stakes				20		
Staff				5		
Vehicle	ATV			1		
Sandbags				100		

**Strategy: 4-620.3 Objective:** Erect Filter Fence

*Strategy:* Construct a filter fence across the front of the channel where the inlet is narrowest, water flows are low or dry, the ground can receive and hold metal stakes, and the spill is heavy oil. Monitor barrier and replace pom-poms as necessary to maintain effectiveness.

Table of Response Resources

Equipment	Sub-Type	Size	Unit	QTY	Unit	Last Page Update
Fence	Construction Fencing	4 x 100 feet		2	Rolls	
Misc.	Oil Snare (pom-pom)			40		
stakes	T-posts	6 feet		16		
Misc.	T-posts			1		
Vehicle	ATV			1		
Staff				5		

**Strategy: 4-620.4 Objective:** Shoreline Pre-Clean: Resource Specialist Supervision Required

*Strategy:* Consult with resource trustees regarding wildlife issues before undertaking this activity. Hand crews to move and store kelp, driftwood, vegetative debris, trash, and other materials above high-tide line. Dispose of trash. Replace unoled debris in its former location once the threat of oiling is past.

Table of Response Resources

Equipment	Sub-Type	Size	Unit	QTY	Unit	Last Page Update
Vehicle	ATV			1		
Misc.	Trash Bags					
Staff				5		

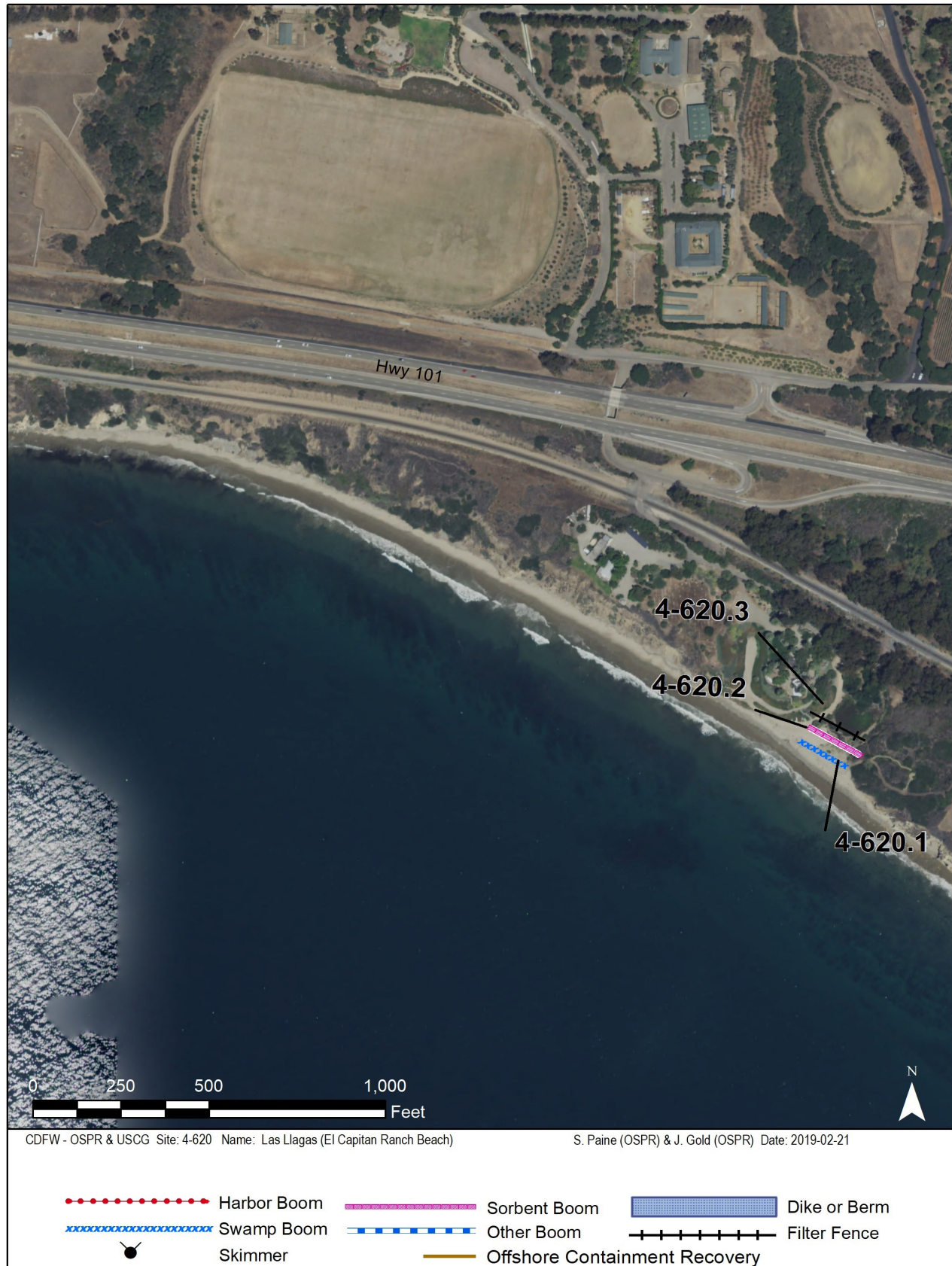
**Logistics:****Directions:**

*Land Access:* This inlet is located within a small private gated beach community.

*On-Water Limitations:* Santa Barbara Harbor is the nearest full service civilian harbor for full service berthing, launching and fueling.

*Facilities, Staging Areas, Command Posts, Available Equipment:*

*Communications Problems:* none



Imagery: NAIP 2016